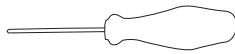


## REQUIRED TOOLS



10 mm (7/16") Wrench  
or  
Socket Wrench



Phillips Screwdriver

## STANDARD PLATE INSTALL METHOD

### STEP 1

Remove your old machine heads, screws, and bushings.

### STEP 2

Use the included InvisoMatch mounting plates that correspond to your old machine head screw pattern. Colored premium plates are available for purchase from Graph Tech.

### STEP 3

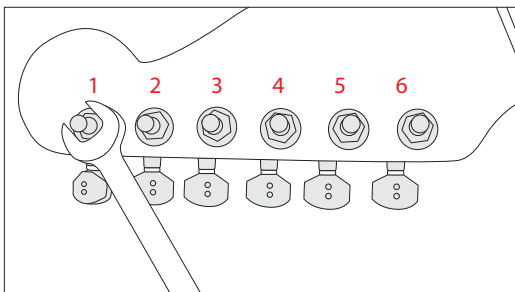
Screw down matching InvisoMatch plates using pre-existing screw hole(s).

### STEP 4

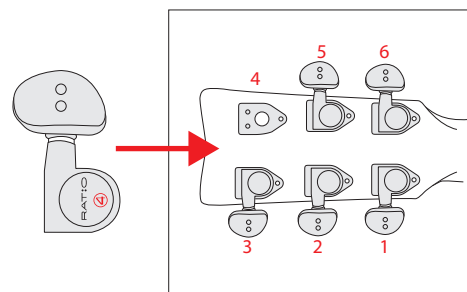
Install Ratio machine heads in the correct order using the supplied washer and bushing. Tighten all bushings using 10mm (7/16") wrench. Tighten bushings so they are snug, do not overtighten.

### IMPORTANT

- Ratio machine heads need to be installed to the matching string position. Each machine head is numbered 1 to 6. 1=High E, 2=B, 3=G, 4=D, 5=A, 6=Low E



SIX IN LINE RIGHT HANDED



3 + 3 RIGHT HANDED

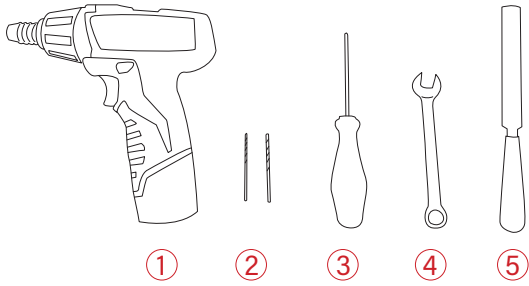


STANDARD AND LOCKING MACHINE HEAD  
INSTALLATION WEBPAGE



STANDARD AND LOCKING MACHINE HEAD  
INSTALLATION VIDEO

## REQUIRED TOOLS

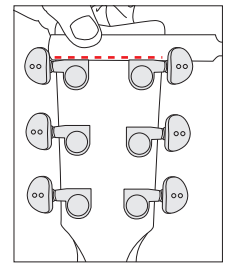
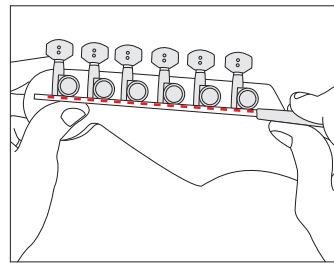


## ALTERNATE INSTALL METHOD

- ① Drill
- ② Drill bits: 1/16" (1.6mm / #52) and 7/64" (2.5mm / #40)
- ③ Phillips Screwdriver (required only for screw mount machine heads)
- ④ 10mm (7/16") Wrench or Socket Wrench
- ⑤ Straight edge

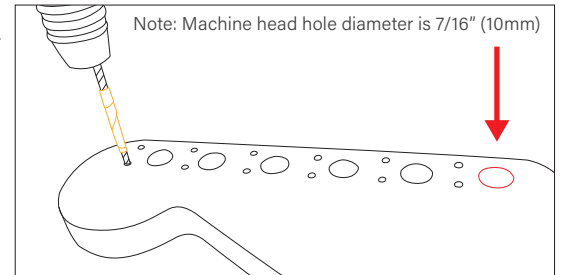
### STEP 1

- Use one of the InvisoMatch mounting plates provided as a template to mark the position of the two pin holes you will need to drill (use a straight edge if necessary)
- Use a fine tip marker or center punch to mark the 2 pin hole locations.



### STEP 2

- Using a 1/16" (1.6mm / #52) drill bit, drill pilot holes to a depth of 1/8" (3mm).
- Using a 7/64" (2.5mm / #40) drill bit, drill alignment holes to same depth.
- Test machine head to ensure fit.
- Repeat for all machine heads.



### STEP 3

- Install Ratio machine heads in the correct order (refer to red numbers in images) using the supplied washer and bushing.
- Tighten all bushings using 10mm (7/16") wrench.
- Tighten bushings so they are snug, do not overtighten.



STANDARD AND LOCKING MACHINE HEAD  
INSTALLATION WEBPAGE



STANDARD AND LOCKING MACHINE HEAD  
INSTALLATION VIDEO

