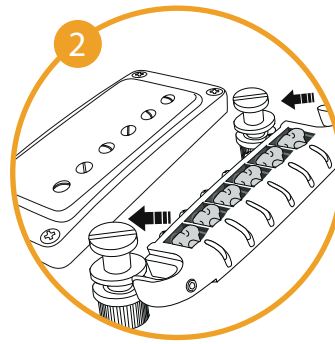


RESOMAX WRAPAROUND INSTALLATION INSTRUCTIONS



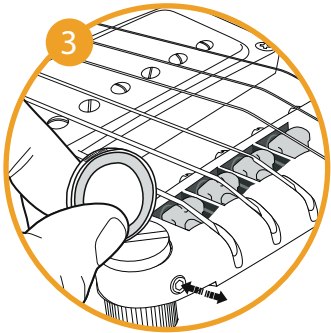
STEP 1

Determine correct string height by measuring the gap between the top of the 12th fret and the bottom of the low E string. It should be around 0.125" (3mm), or about a stack of a 12 cards if you don't have a ruler. For the high E string, the gap should be around 0.080" (2mm) or about a stack of 8 business cards.



STEP 2

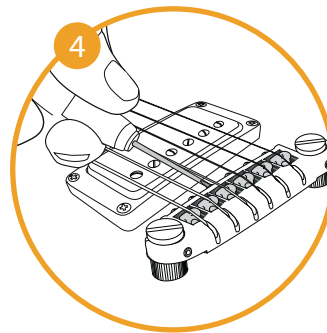
Remove the strings and remove the old bridge by sliding it off the posts. The ResoMax bridge comes with steel posts that enable the magnetic AutoLock feature. You may keep using your old posts if they are also steel.



STEP 3

Adjust the two set screws at the back of the bridge so that the range of travel of the saddles is beyond the scale length measured from the nut (scale length is 2x the distance from the nut to the 12th fret).

Install strings and tune your guitar to concert pitch. Adjust the string height by turning the bridge posts with a coin. Raise or lower the treble and bass sides of the bridge until correct string height (measured in Step 1) is achieved. Tune the guitar to concert pitch after the adjustment and check the string height at the 12th fret.



STEP 4

Set the intonation. In order for the chords to play in tune all over the fretboard, each string must be correctly intonated. The note fretted at the 12th fret should match the 12th fret harmonic. Compare the pitch of the fretted note and the harmonic (lightly touch the string right above the 12th fret and pluck). Adjust each saddle by tuning its intonation screw with a screwdriver. Shortening the string will increase the pitch of the fretted note relative to the harmonic; making the string longer will decrease the pitch. Each time you make a saddle adjustment, retune the string before comparing pitches again.