

Things to check for error codes P01 and P06

Step 1: Secure All Connections

1.Wrap All Connections with Water-Resistant Tape

- Use water-resistant tape to wrap each connection tightly.
- Apply **9 to 10 complete wraps** around each connection to ensure a proper seal.

Step 2: Fill the System with Water Before Powering On

⚠ **Important:** Always fill the system with water before turning on the chiller to prevent air from entering.

1.Connect the Water Pipes to the Chiller

- Ensure the pipes are securely attached to the inlet and outlet ports on the chiller.

2.Add Water to the Inlet Pipe

- Slowly pour water into the **inlet pipe**.
- Make sure the **outlet pipe is upright** to allow air to escape.

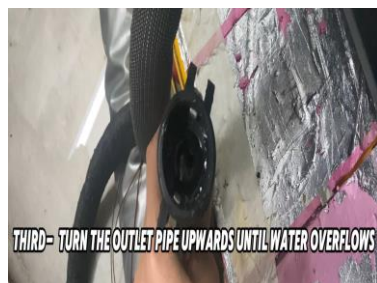
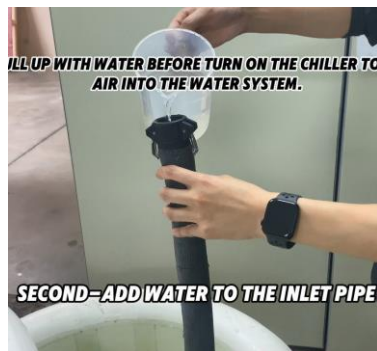
3.Watch for Water Flow

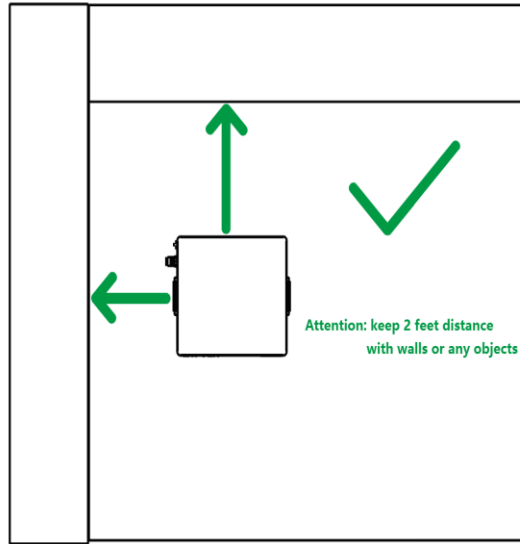
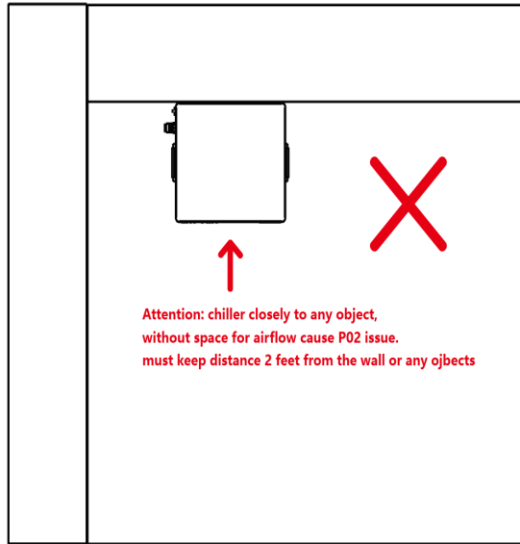
- Continue filling until:

- ✓ Both filter cups are filled with water
- ✓ Water overflows from the outlet pipe

4.Reconnect the Pipes to the Ice Bath Tub

- Carefully connect the two water pipes to the **inlet and outlet ports** of the ice bathtub.
- ✓ Double-check that each pipe is connected to the **correct port** (inlet to inlet, outlet to outlet).





Step 3: Ensure Proper Ventilation for the Chiller

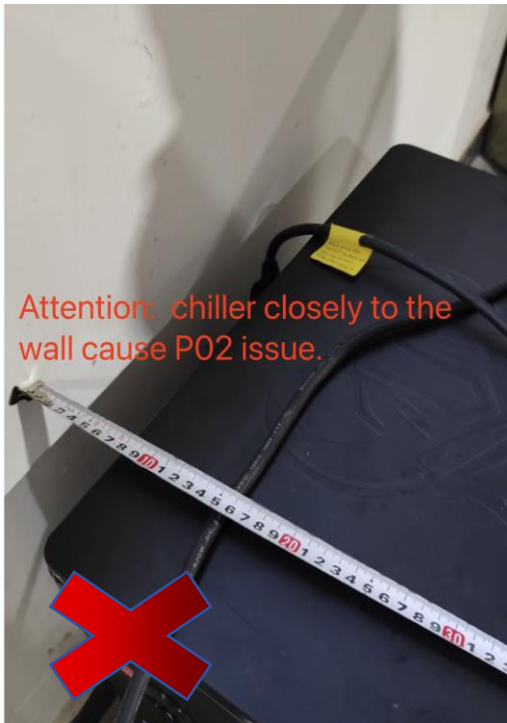
1. Check Chiller Placement

- Make sure the **chiller is not placed against a wall** or near any objects that could block airflow.

2. Maintain Clearance

- The chiller should be located in an **open space** with **at least 2 feet (60 cm)** of clearance on all sides.
- This allows for **proper air circulation** and helps prevent overheating.

✅ Good ventilation = Better performance and longer lifespan for your chiller.



Step 4: Do Not Open the Chiller Cover

⚠ Important Safety Reminder:

Never open the cover of the chiller. Tampering with internal components can lead to damage or void the warranty.

1.Ensure the Chiller is Fully Assembled

- Before use, check that the chiller is **completely assembled** and **factory-sealed**.
- Only operate the unit in its **original, unmodified condition**.

✅ Keeping the cover closed ensures safe operation and protects the internal system.



Final Step: Power On the Chiller

⚠ **Important:** Ensure all previous steps are completed **before powering on** the chiller.

1. Unplug the Chiller

- If the chiller is already plugged in, **unplug it first** to reset the system.

2. Plug In the Chiller

- Connect the chiller to a **stable power source**.

3. Press the Start Button

- Once plugged in, **press the "Start" button** to power on the chiller.

✅ The chiller should now begin operating normally. Monitor for any error codes or unusual noises during startup.

