



# ORACLE LIGHTING

JEEP LASER FOG LIGHTS

ORACLE PART #5930

## INSTALLATION GUIDE

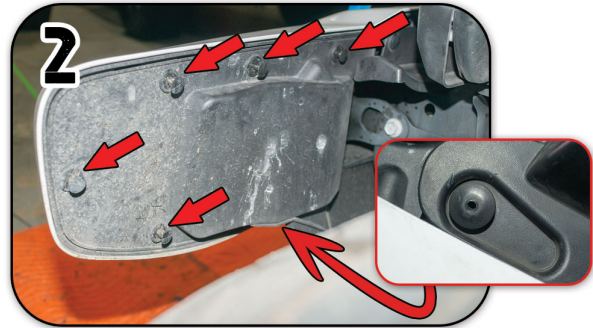
**TOOLS NEEDED:**  
PANEL TOOL  
7MM SOCKET  
8MM SOCKET  
SOCKET WRENCH



SCAN TO VIEW INSTALL VIDEO



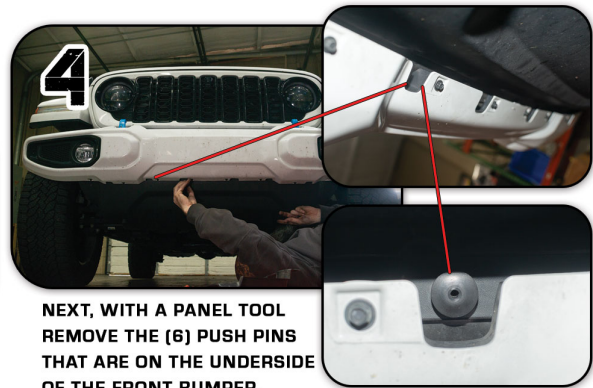
**1**  
BEGIN BY REMOVING THE 6 PUSH PINS  
USING A PANEL TOOL.



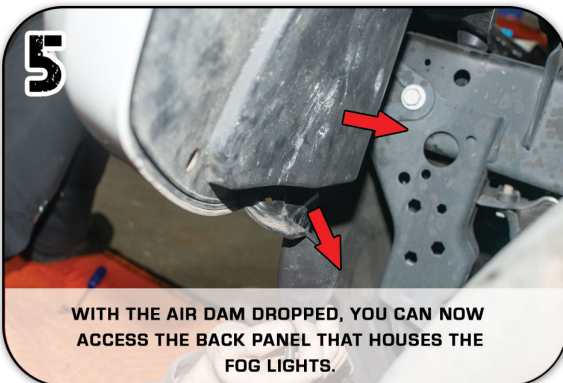
**2**  
MARKED ARE THE LOCATIONS OF THE PUSH PINS.  
THERE IS ONE MORE LOCATED ON THE BOTTOM OF THIS PANEL.



**3**  
TO GAIN ACCESS TO THE FOG LIGHTS, YOU MUST  
DROP DOWN THE AIR DAM. BEGIN BY REMOVING THE  
(2) 8MM BOLTS LOCATED HERE.



**4**  
NEXT, WITH A PANEL TOOL  
REMOVE THE (6) PUSH PINS  
THAT ARE ON THE UNDERSIDE  
OF THE FRONT BUMPER.



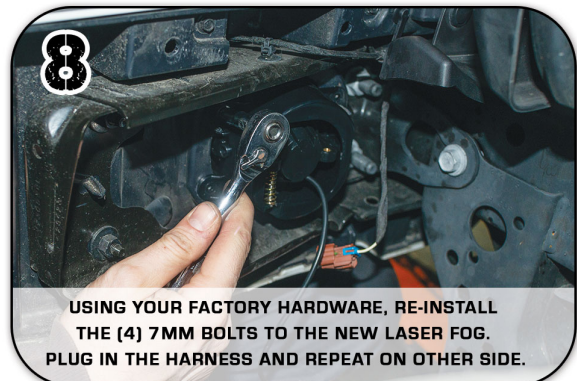
**5**  
WITH THE AIR DAM DROPPED, YOU CAN NOW  
ACCESS THE BACK PANEL THAT HOUSES THE  
FOG LIGHTS.



**6**  
REMOVE THE PANEL TO GAIN ACCESS TO THE  
BACK OF THE FOG LIGHTS.



**7**  
REMOVE THE (4) 7MM BOLTS AND UNPLUG  
THE HARNESS TO REMOVE THE OEM FOG LIGHT.



**8**  
USING YOUR FACTORY HARDWARE, RE-INSTALL  
THE (4) 7MM BOLTS TO THE NEW LASER FOG.  
PLUG IN THE HARNESS AND REPEAT ON OTHER SIDE.



[www.oraclelights.com](http://www.oraclelights.com)

© 2025 ORACLE LIGHTING

4401 Division St.  
Metairie, LA 70002

FOR ADDITIONAL TECHNICAL SUPPORT PLEASE CALL US 1(800)407-5776