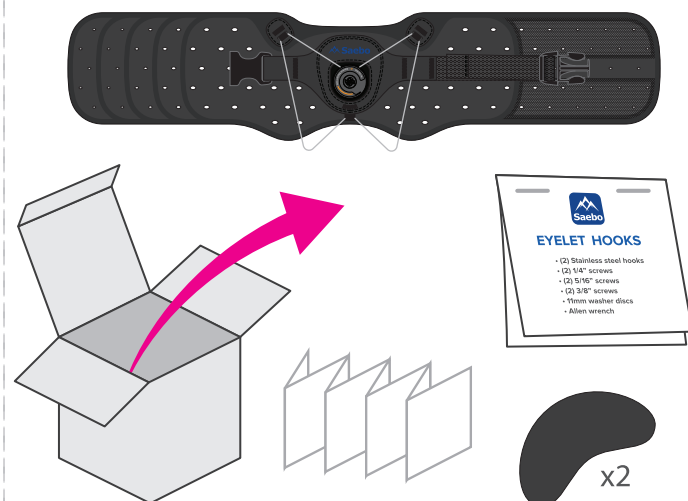


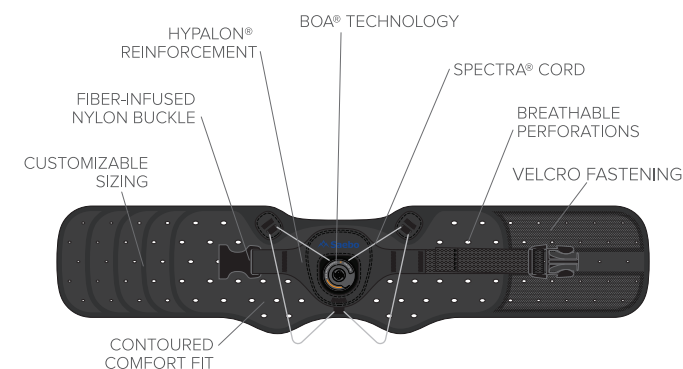


WHAT'S IN THE BOX



1

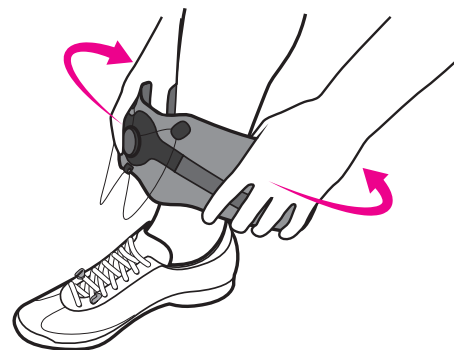
PARTS OF THE BRACE



2

ORIENT THE BRACE

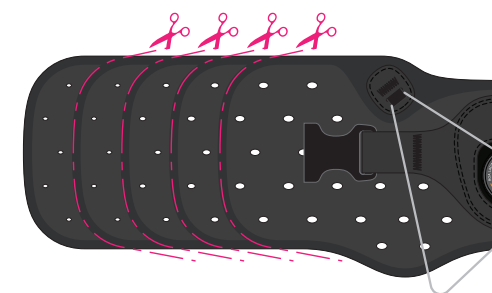
- Place the Boa® center to your foot or shoe.
- Wrap brace around ankle to test for fit.



3

TRIM THE BRACE

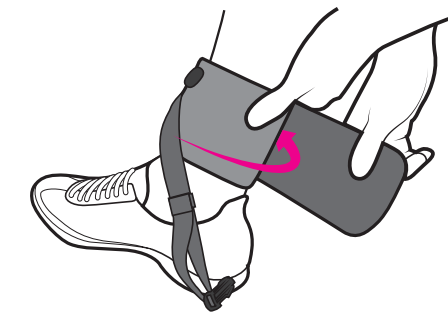
- Trim brace **if** needed. (note: make sure not to cut sewn areas)



4

SECURE VELCRO

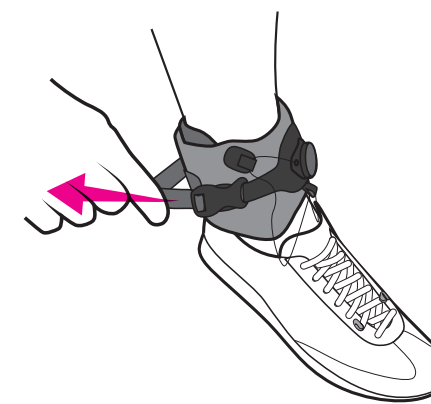
- Place the Boa® center to your foot or shoe again.
- Wrap brace **tightly** around ankle.
- Place the left side first against your leg, then follow with right to secure velcro.



5

CONNECT THE BUCKLE

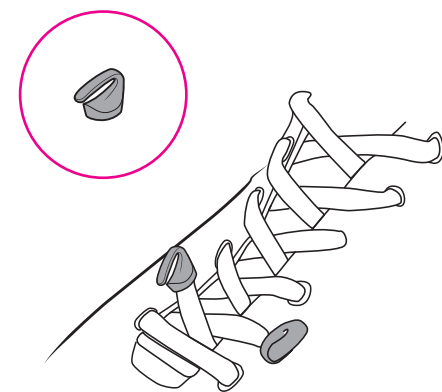
- With velcro secure, connect buckle in place.
- Adjust strap length as necessary.



6

ATTACH EYELET HOOKS

- See the included Eyelet Hook package for instructions on proper installation and use.



7

RELEASE BOA®

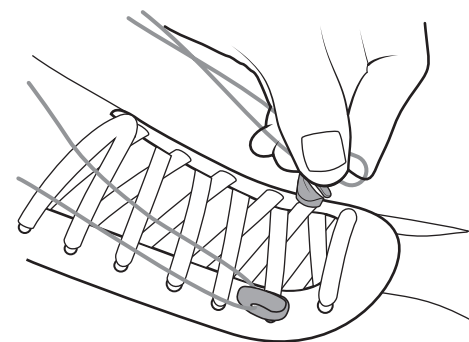
- Pull the face of the Boa® away from you.



8

ATTACH CORD

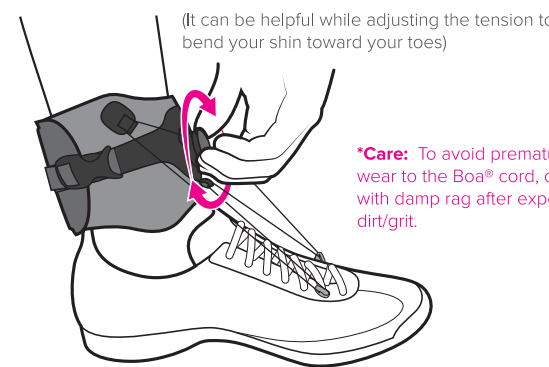
- With the Boa® outward, hold onto the spectra cord and pull toward Eyelets Hooks.
- Slip the cord into the Eyelet Hook openings.



9

WIND THE BOA®

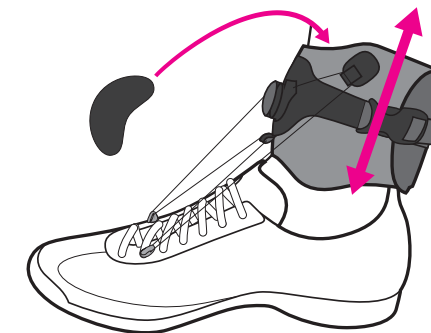
- Push the Boa® inward until it clicks.
- Wind the Boa® clockwise until the cord is **tight** and you have the lift and angle desired.



10

ADJUST AS NEEDED

- If you feel pressure anywhere, make adjustments in the fit and height position of the brace around your ankle.
- If needed, use included pads to increase comfort.



11

SEE THE VIDEOS

Visit our website to see instructional videos including how to punch new eyelets into practically any type of footwear.

www.saebo.com/saebostep

Consult your doctor concerning your condition and the use of this brace.

12

ORDER ADDITIONAL PARTS

Saebo, Inc.
Six LakePointe Plaza
2709 Water Ridge Parkway
Suite 100
Charlotte, NC 28217
888-284-5433
sales@saebo.com
www.saebo.com

Hypalon® is a registered trademark of E.I. du Pont de Nemours and Company.
Boa® is a registered trademark of Boa Technology Inc.
Spectra® is a registered trademark of Honeywell International Inc.

