

GLADIATORE REMINGTON 870 INSTALLATION

Updated October 2023

Gladiatore Fore End

Installation guide for Remington
870 – 12ga and TAC-14 – 12ga.

Page 2

Gladiatore Stock / Grip

Installation guide for Remington 870
– 12ga and TAC-14 – 12ga.

Page 3

CONFIRM COMPLIANCE WITH LOCAL AND FEDERAL REGULATIONS PRIOR TO INSTALLING.
CONFIRM YOUR SHOTGUN IS UNLOADED PRIOR TO INSTALLATION.



GLADIATORE FORE END

CONFIRM COMPLIANCE WITH LOCAL AND FEDERAL REGULATIONS PRIOR TO INSTALLING.
CONFIRM YOUR SHOTGUN IS UNLOADED PRIOR TO INSTALLATION. GOOD? CHECK AGAIN.

REMOVE THE FORE END:

Step 1.

Check if there is an adapter connecting the barrel with the magazine tube. If there is, use a screwdriver to unscrew it and slide it off.

Step 2.

Slide the fore end back to halfway position, exposing the magazine tube and barrel.

Step 3.

Unscrew and remove the magazine tube cap. Maintain awareness of internal springs when removing the magazine tube cap.

Step 4.

Slide the barrel off the front of the shotgun.

Step 5.

Push out the action bars by pressing the action bar lock (found inside the trigger guard). The action bars and fore-end will slide off the front.

Step 6.

Using the included WOOX fore end removal tool, unscrew the fore-end nut which holds the fore-end onto the action bars.

Step 7.

Once the nut is removed, slide the old fore end off the action bars.

INSTALL THE NEW FORE END:

Step 1.

Slide your new WOOX fore end onto the magazine tube.

Step 2.

Screw the nut back into place, securing the fore end. Ensure its tight but not overtightened.

Step 3.

Reattach the barrel and tighten the magazine tube cap.

Step 4.

Reinstall the adapter connecting barrel with the magazine tube (if present)

GLADIATORE STOCK / GRIP

CONFIRM COMPLIANCE WITH LOCAL AND FEDERAL REGULATIONS PRIOR TO INSTALLING. CONFIRM YOUR SHOTGUN IS UNLOADED PRIOR TO INSTALLATION. GOOD? CHECK AGAIN.

REMOVE THE STOCK / GRIP:

Step 1.

Lay the shotgun on a stable surface, action side up.

Step 2.

Using a Phillips screwdriver, remove the recoil pad screws and then the recoil pad itself.

Step 3.

Deep inside the stock, you'll find a stock bolt. Using an appropriate-sized flat head screwdriver, unscrew and remove the stock bolt.

Step 4.

Once the bolt is removed, the stock should slide off the rear of the receiver. Keep the stock bolt and washers; you may need them for the new stock.

INSTALL THE NEW STOCK / GRIP:

Step 1.

Remove the adapter from your WOOX stock and affix on the rear of the 870 chassis.

Step 2.

Remove the rear pin on the trigger assembly.

Step 3.

Gently lower the rear of the trigger assembly.

Step 4.

Slide the WOOX stock over the adapter.

Step 5.

Reinstall the pin of the trigger assembly.

Step 6.

Install the WOOX long bolt to affix the stock to the chassis.

NEED HELP?

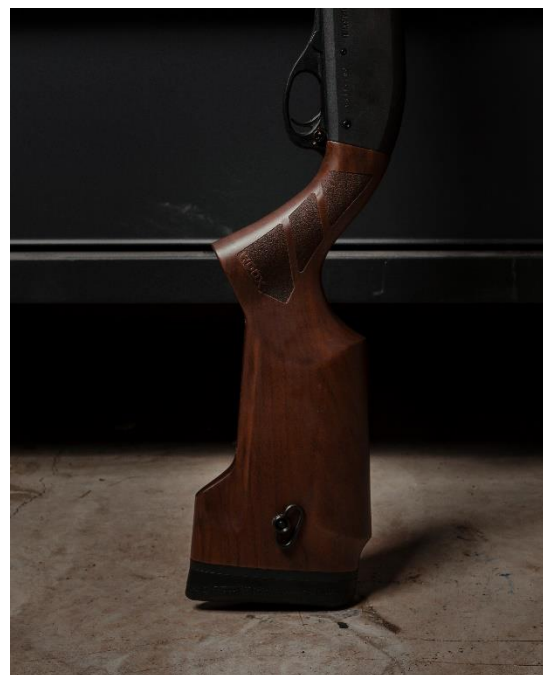
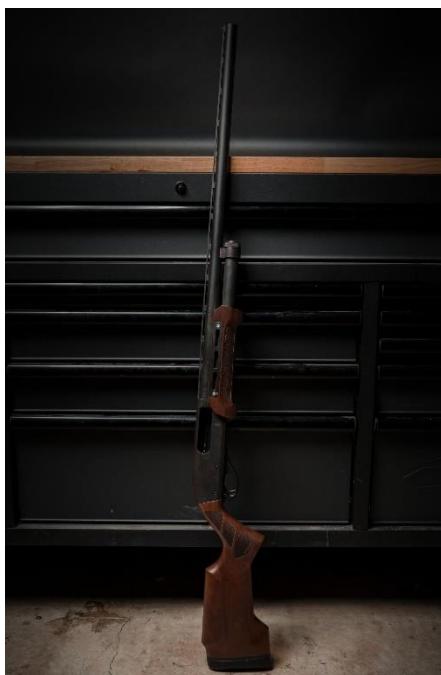
We've got you. Visit the links to get the answers you need.

SEND A MESSAGE.

<https://wooxstore.com/pages/contact-us>

100 YEARS OF SUPPORT

<https://wooxstore.com/pages/woox-limited-warranty>



THANK YOU.

Your business supports teams in Italy and Hickory, North Carolina, all dedicated to delivering premium outdoor gear your heirs will fight over. Every indescribably stunning creation is backed by 100 Years of Support.

Visit wooxstore.com to see our full line of stocks, knives and axes

