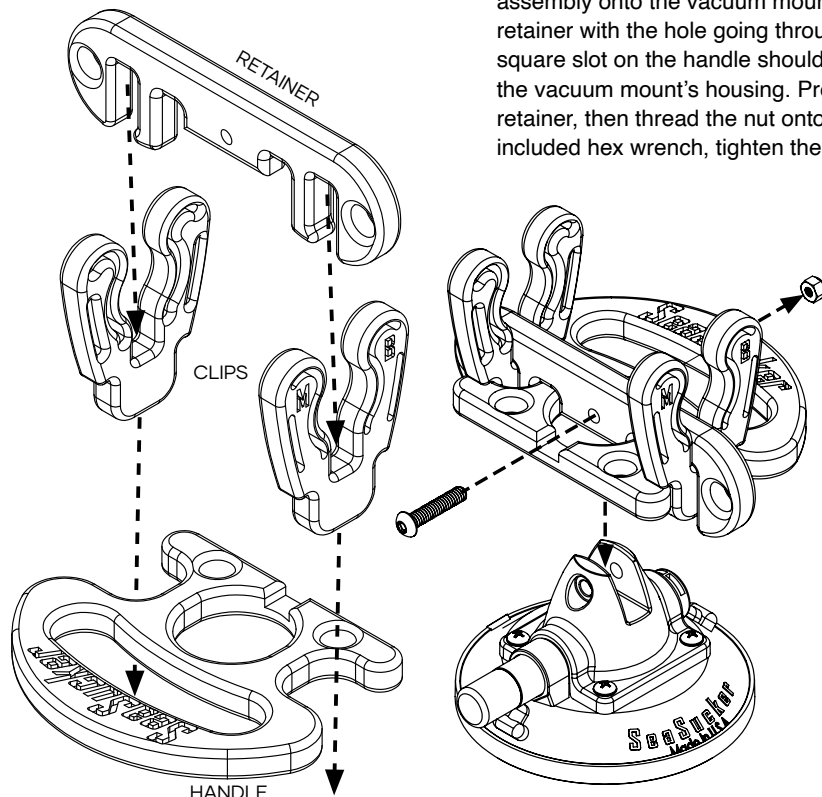
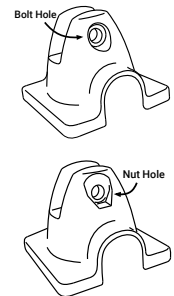


Paddle Clip and Grip



Assembling your Paddle Clip and Grip

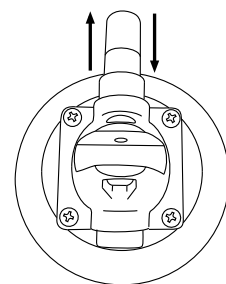
You must assemble your Paddle Clip and Grip before use. First, choose the paddle clips that are sized for your paddle. The clips are marked according to their size: SM is for 25-26.5 mm paddle shafts, and RG is for 28-29 mm paddle shafts. Press the clips into the corresponding slots on the retainer. Press them firmly in until they snap into place. Next, press the retainer onto the top of the handle. The engraved "SeaSucker" and the square slot on the handle must be facing the top. Now slide the clip, retainer, and grip assembly onto the vacuum mount, taking care to line up the hole in the retainer with the hole going through the vacuum mount's housing. The square slot on the handle should be on the same side as the bolt hole on the vacuum mount's housing. Press the bolt through the bolt hole and retainer, then thread the nut onto the bolt as it exits the nut hole. Using the included hex wrench, tighten the bolt by turning in clockwise until secure.



Attaching Your Paddle Clip and Grip

Your Paddle Clip and Grip attaches to a smooth, clean, unobstructed surface. It will not attach to a deck pad or highly textured surface. The vacuum mount will not attach over a seam or other surface incongruity. Do not attach over decals or on a wrapped surface.

Clean the surface you're going to mount the Paddle Clip and Grip to. Dust and dirt will affect the vacuum mount's ability to create and hold vacuum. Remove the protective cover from the SeaSucker and inspect the rubber vacuum pad for damage or dirt. Do not use a vacuum mount with any visible damage to the vacuum pad. If the vacuum pad is dirty, clean it with a mild soap and water solution and a soft cloth or sponge. It may help to moisten the bottom edge of each vacuum pad with water - do not use cleaners, lubricants or other liquids.

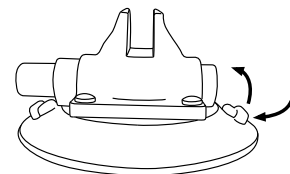


Press the vacuum mount against the mounting surface to make a full seal; you may need to press firmly down on the Paddle Clip and Grip to ensure that the vacuum pads are fully connecting with the mounting surface when pumping.

Pump the vacuum mount repeatedly until the plunger doesn't spring back and the indicator band is hidden inside the pump cylinder. If the plunger won't stay seated in the pump cylinder or continues to extend out immediately after pumping, you may need to clean the mounting surface or the vacuum pad or pump, perform basic maintenance on the vacuum pad or pump, or move to a more suitable mounting position. Do not use your Paddle Clip and Grip without correcting the problem!

Removing Your Paddle Clip and Grip: Lift and Cover

With your fingertip, use one of the tabs on the SeaSucker's vacuum pad to lift the edge of the pad up from the mounting surface and break the vacuum seal. Always put the protective cover back on when the Paddle Clip and Grip is not attached to protect the vacuum pad's rubber. Make sure the pad is fully seated in the protective cover before storing it. The edge of the vacuum pad could be damaged or deformed if the vacuum pad isn't fully seated in the protective cover.



Check for the Indicator Band During Use

SeaSucker vacuum mounts are not intended to be permanent fixtures - they will lose vacuum over time. When your vacuum mount loses vacuum, it will warn you by extending the pump's plunger, exposing an orange band. You are required to monitor your vacuum mounts during use. Periodically check to see if the indicator band is visible on the vacuum mount. If you see the orange band, simply pump the SeaSucker as described above.

If the indicator band appears less than four hours after being pumped to full strength, either cleaning, maintenance or repositioning may be required. Refer to the Troubleshooting Guide at the end of these instructions. If your Paddle Clip and Grip is mounted on a scratched surface, move it to a more suitable position. If the mounting surface or vacuum mount is dirty, clean it. If these steps don't stop the vacuum mount from losing vacuum prematurely, discontinue use until the problem is resolved. If needed, replacement parts can be purchased in the Replacement Parts section of our on-line store.

Care and Maintenance

To get the most out of your Paddle Clip and Grip, inspect it regularly and store it with the vacuum mount's protective cover on. Check that all screws are securely tightened, including the screws attaching the vacuum pad to the SeaSucker housing and the screws attaching the SeaSucker to the handle deck.

Clean the vacuum pad before each use with a sponge or soft cloth, mild dish soap and water. Do not use harsh solvents or abrasive cleaning pads. Inspect the sealing edge for stiffness, cracks, roughness, or cuts. A damaged vacuum pad should be replaced.

The vacuum pump should be cleaned regularly. Pull the plunger straight out of the pump cylinder. Clean the inside of the cylinder with dish soap and a soft cloth or paper towel. Dry the inside of the cylinder – water left in the cylinder may interfere with the check-valve function of the pump.

The plunger should be wiped clean and the black rubber seal at the tip of the plunger should be re-lubed with a thin layer of silicone-based gel lubricant, such as the Lube Tube. After cleaning, push the plunger back into the cylinder and pump it several times to seat it properly and distribute the lubricant.

Warranty

SeaSucker offers a lifetime, non-transferable warranty to the original purchaser covering defects in materials and workmanship. Defective products can be returned to SeaSucker for replacement or repair (at SeaSucker's option). Warranty claims must be accompanied by a sales receipt or other proof of purchase document. The cost of transportation to and from SeaSucker for the repair or replacement of any defective part or accessory is not covered by this warranty and is to be paid by the owner.

This warranty does not apply to damage or failure resulting from routine wear and tear expected in the normal use of this product, or to lack of maintenance, user error, alteration or modification of the product, accidents, misuse, abuse, or neglect.

This warranty is given in lieu of all other written or oral warranties, express or implied, including without limitation implied warranties of merchantability and fitness for a particular purpose, and are limited to the duration and specifications of this warranty.

Purchaser's exclusive remedy under this warranty is the repair or replacement of a defective product or, at SeaSucker's option, the issuance of a refund or credit for the purchase price of the product. SeaSucker's liability for any damages relating to any allegedly defective product, whether arising from the use or the inability to use the product and whether claimed under tort, contract or any other legal theory, shall be limited to the actual price paid for such product and shall in no event include loss of use, loss of time, incidental, consequential, special, or indirect damages of any kind, even if SeaSucker is aware of the possibility of such damages, to the full extent as such may be disclaimed by law.

IMPORTANT WARNINGS

- The Paddle Clip and Grip should not be used to transport a paddle on the outside of a moving vehicle.
- Do not use if the indicator band is exposed on any of your SeaSucker's pumps.
- Do not use if all of the vacuum mounts cannot maintain a full vacuum seal for at least 4 hours.
- Clean the mounting surface before attaching.
- Clean SeaSucker vacuum mounts before attaching.
- Clean and lube your SeaSuckers' pumps regularly.
- Inspect screws, nuts, and bolts regularly and retighten if necessary.
- Make sure the vacuum pads are fully seated in the protective covers when not in use.

TROUBLESHOOTING GUIDE	Problem	What Might Be Wrong	How To Fix It
	Slow Leakage	Dry mounting surface or vacuum pad	Moisten the mounting surface or the vacuum pad
		Nicks or cuts on vacuum pad	Replace the vacuum pad
		Dirt in pump	Clean and re-lube the plunger and pump cylinder
		Dry pump	Re-lube the plunger seal
		Dirt on vacuum pad	Clean the vacuum pad
		Dirty or uneven mounting surface	Clean the mounting surface or move to a more suitable spot
	Severe Leakage	Nicks or cuts on vacuum pad	Replace the vacuum pad
		Damaged pump	Replace the vacuum pump
		Dirty or uneven mounting surface	Clean the mounting surface or move to a more suitable spot
	Jammed or Sluggish Pump	Dry pump	Re-lube the plunger seal
		Obstructed valve stem	Remove the obstruction; clean and re-lube the pump
		Dirt in pump	Clean and re-lube the plunger and pump cylinder