

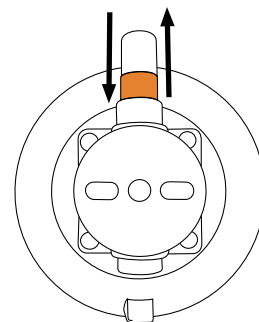
Pro Series Dive Rack

MD5591
8/22

Attaching Your Dive Rack: Clean and Pump!

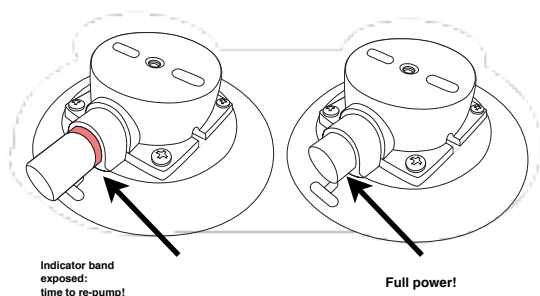
Clean the surface you're going to mount the dive rack to. Dirt or debris will affect your vacuum mounts' ability to create and hold vacuum. Remove the protective covers and inspect the rubber vacuum pads for damage or dirt. Do not use your dive rack if there is any visible damage to the vacuum pad. If the vacuum pad is dirty, clean it with a mild soap and water solution and a soft cloth or sponge.

Press the vacuum pad firmly against the mounting surface to make a full seal. Pump repeatedly until the plunger does not spring back and the indicator band is hidden inside the pump cylinder. If the plunger won't stay seated in the pump cylinder or continues to extend out immediately after pumping, you may need to clean the mounting surface or the vacuum pad or pump, perform basic maintenance on the vacuum pad or pump, or move the dive rack to a more suitable mounting position. Do not use your dive rack without correcting the problem!



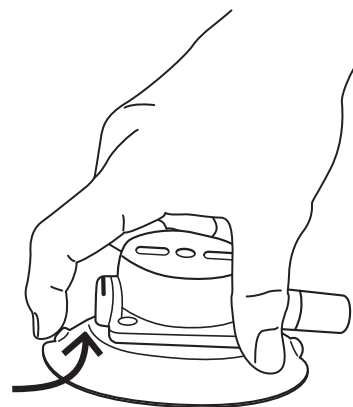
Check for the Indicator Band During Use

SeaSucker vacuum mounts are not intended to be permanent fixtures on your boat - they *will* lose vacuum over time. When your vacuum mount loses vacuum, it will warn you by extending the pump's plunger, exposing an orange band. You are required to monitor your vacuum mount during use. If you see the orange band, simply pump as described above. If the indicator band appears less than six hours after being pumped to full strength, either cleaning, maintenance or repositioning may be required.



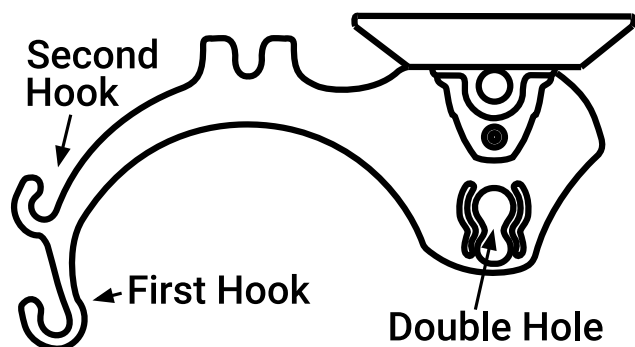
To Remove Your Dive Rack: Lift and Cover!

With your fingertip, use one of the tabs on the SeaSucker's vacuum pad to lift the edge of each pad up from the mounting surface and break the vacuum seal. Remember to attach the protective cover to the bottom of the vacuum pad to protect it when not mounted on your boat.



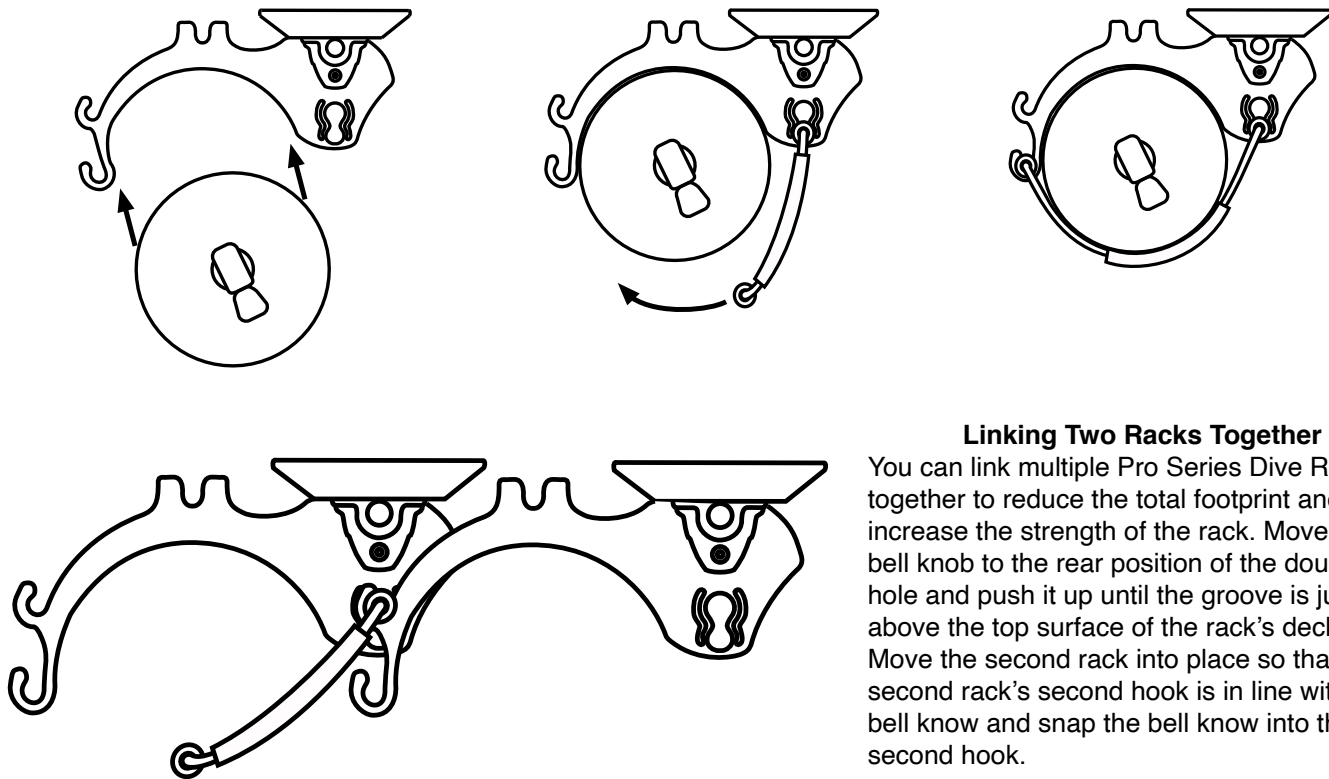
Mounting a Tank in the Dive Rack

Mount your dive rack to a suitable location on your boat. The dive rack should meet your tank somewhere between 1/4 and 1/3 down from the top of the tank. Maneuver the tank onto the arm of the dive rack. Snap the bell knob of the restraining cord into the front position of the double hole and stretch the restraining cord around the dive tank. Snap the straight knob into the first hook.



Straight Knob

Bell Knob



Linking Two Racks Together

You can link multiple Pro Series Dive Racks together to reduce the total footprint and increase the strength of the rack. Move the bell knob to the rear position of the double hole and push it up until the groove is just above the top surface of the rack's deck. Move the second rack into place so that the second rack's second hook is in line with the bell knob and snap the bell knob into the second hook.

Care and Maintenance

To get the most out of your SeaSucker product, inspect it regularly, keep it clean, and store it with the vacuum cups' protective covers on. Check that all screws are securely tightened.

TRUBLESHOOTING GUIDE

Problem	What Might Be Wrong	How To Fix It
Slow Leakage	Dry mounting surface or vacuum pad	Moisten the mounting surface or the vacuum pad
	Nicks or cuts on vacuum pad	Replace the vacuum pad
	Dirt in pump	Clean and re-lube the plunger and pump cylinder
	Dry pump	Re-lube the plunger seal
	Dirt on vacuum pad	Clean the vacuum pad
	Dirty or uneven mounting surface	Clean the mounting surface or move to a more suitable spot
Severe Leakage	Nicks or cuts on vacuum pad	Replace the vacuum pad
	Damaged pump	Replace the vacuum pump
	Dirty or uneven mounting surface	Clean the mounting surface or move to a more suitable spot
Jammed or Sluggish Pump	Dry pump	Re-lube the plunger seal
	Obstructed valve stem	Remove the obstruction; clean and re-lube the pump
	Dirt in pump	Clean and re-lube the plunger and pump cylinder



Designed and manufactured by:
SeaSucker, LLC
 Bradenton, Florida
www.SeaSucker.com

