



Submit a request

Sign in

ProTee Customer Support Center > The Golf Club Simulator 2019

Search

TGC2019 for FlightScope Setup Guide (Mevo+ & X3)

Recently viewed articles

[The Golf Club 2019 Computer Requirements](#)

Related articles


[TGC 2019 Installation Issues FAQ](#)

[TGC2019 Setup Guide](#)

[The Golf Club 2019 Computer Requirements](#)

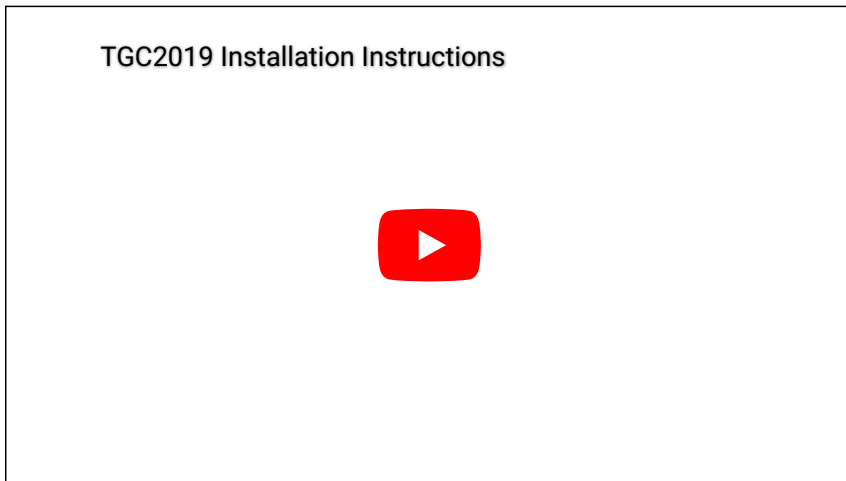
[TGC2019 Sim User Guide](#)

[Changing the TGC licensed hardware platform](#)

 **ProTee Support**
March 09, 2022 17:53

Follow

TGC 2019 setup video.

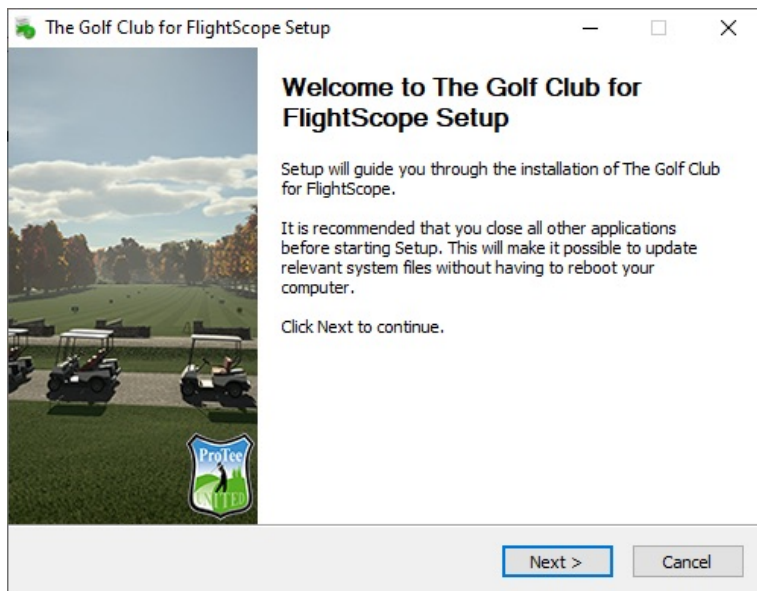


NOTE: If part of the download is corrupted an error message will appear during install. The error can be solved by deleting the corrupted file and restarting the installer.

Detailed instructions: <https://csc.protee-united.com/hc/en-us/articles/360021361933-TGC-2019-Installation-Issues-FAQ>

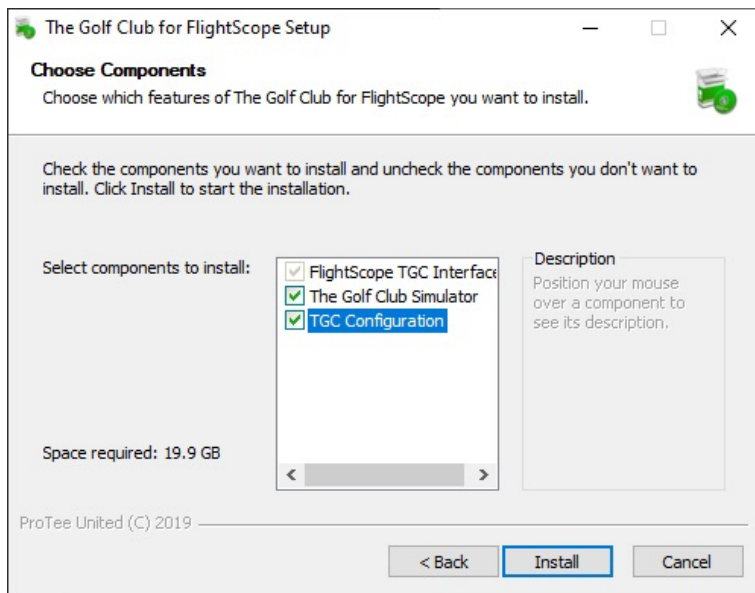
STEP 1:

NOTE: The TGCFSSETUP.EXE is saved in the Windows DOWNLOADS folder.



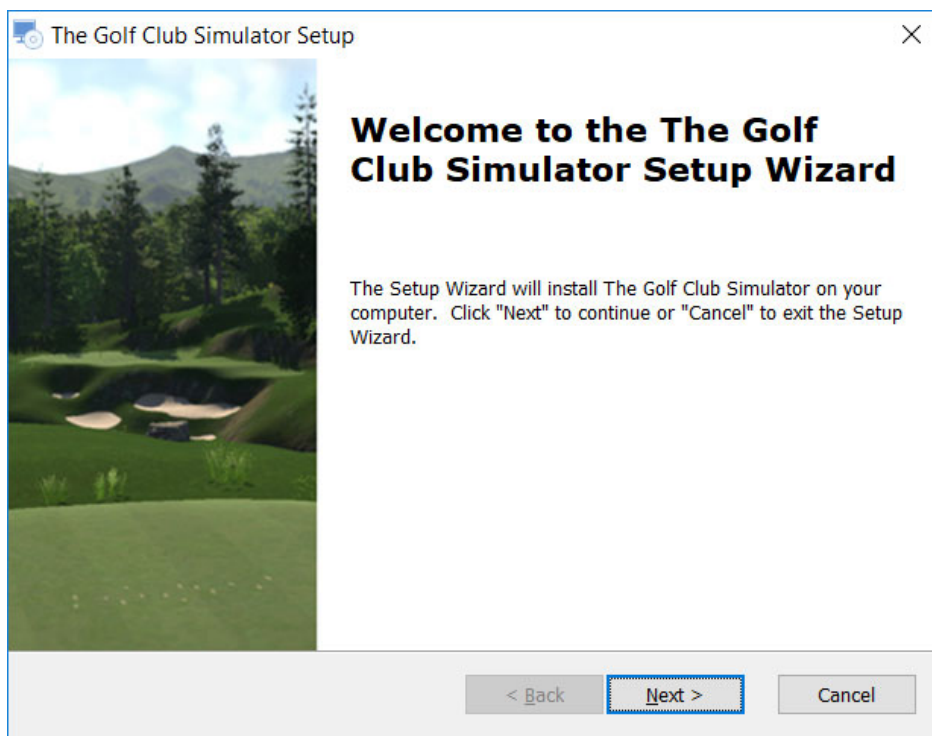
STEP 2:

NOTE: Select ALL options. The FlightScope TGC Interface is always installed and can not be deselected.



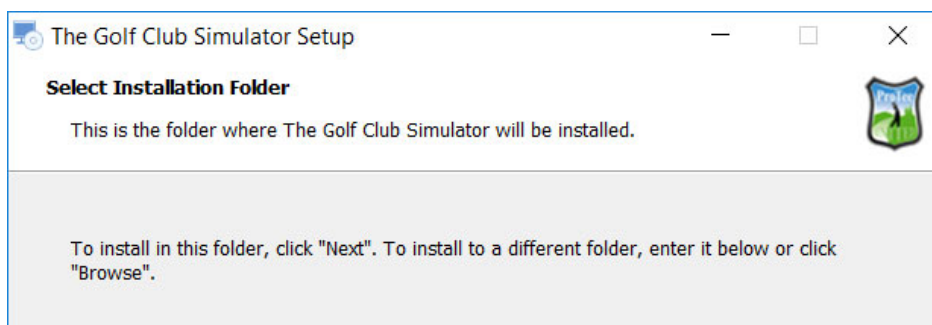
STEP 3:

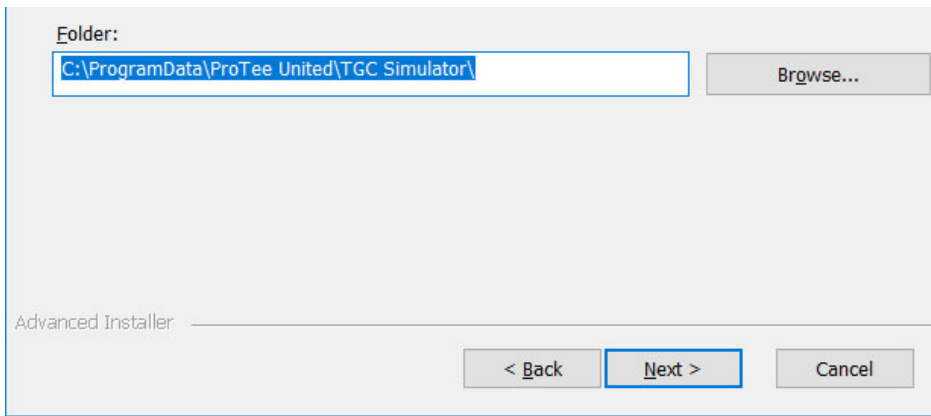
NOTE: Step through the installation procedure.



STEP 4:

NOTE: To prevent any issues do NOT change the default installation path.

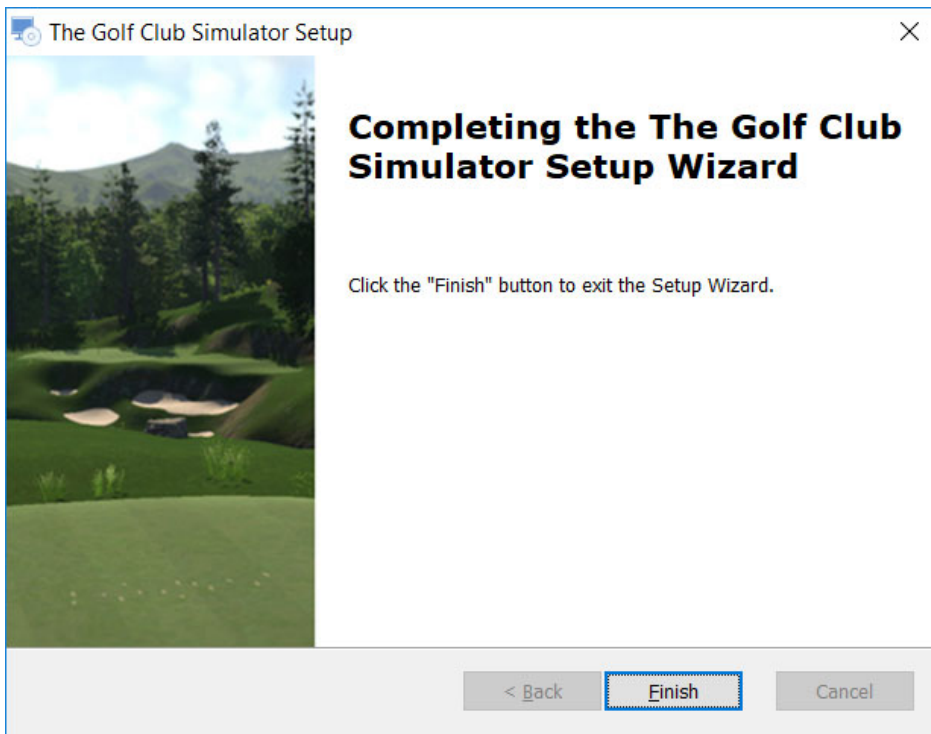




STEP 5:

NOTE: Finish the installation. You will find 3 new icons on your Desktop:

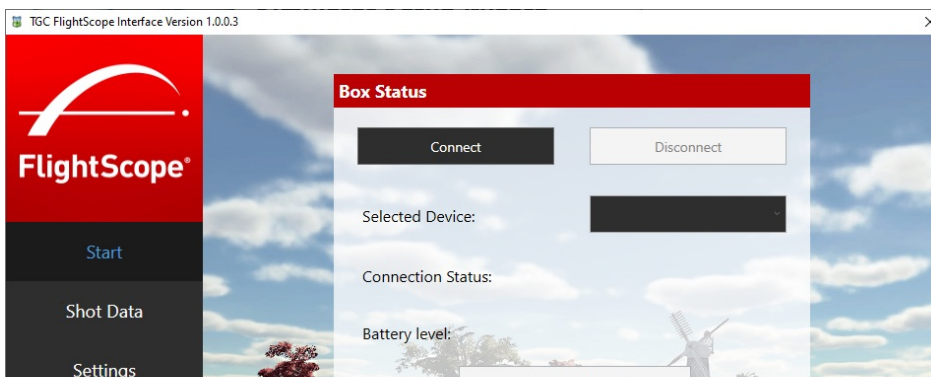
- FlightScope TGC Interface
- FlightScope TGC Settings
- TGC Simulator Console

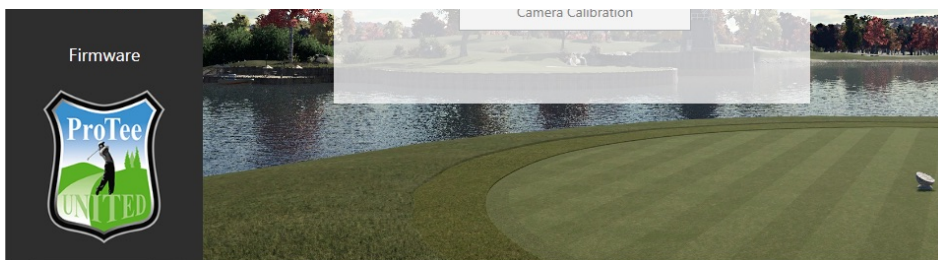


Start the TGC for FlightScope Interface !

Turn on your FlightScope device and connect to it using the WIFI accesspoint the device sets up.

The name of the accesspoint will start with FS (for ex. FS M2-000001).

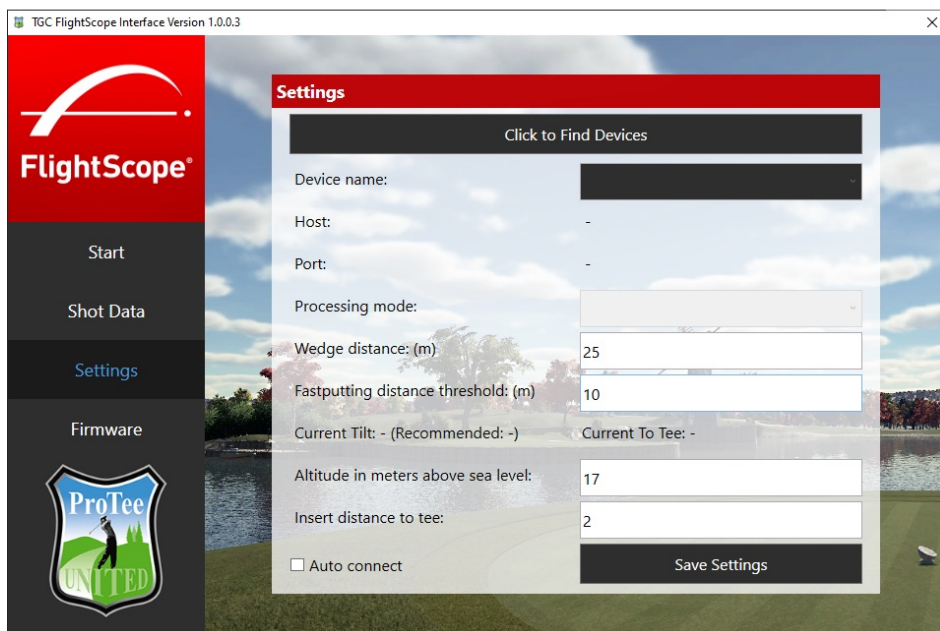




STEP 6:

Go to Settings and select ' find devices' , this will search for your FlightScope device.

When it is found, it will be displayed in the dropdown "Device name".



STEP 7:

Go back to Start and select " Connect " .

The interface will try to connect with your FlightScope device, once it succeeds it will open the TGC Simulator Console.

This is the main interface for the TGC games.

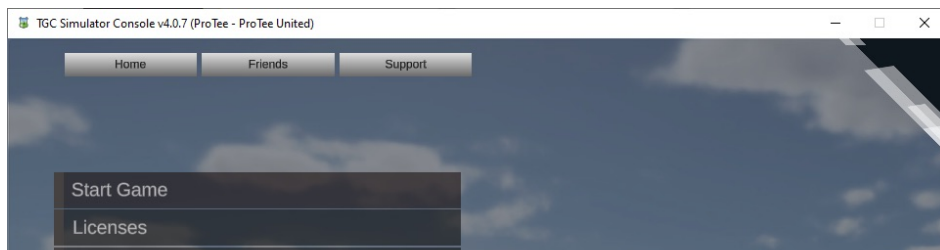
STEP 8:

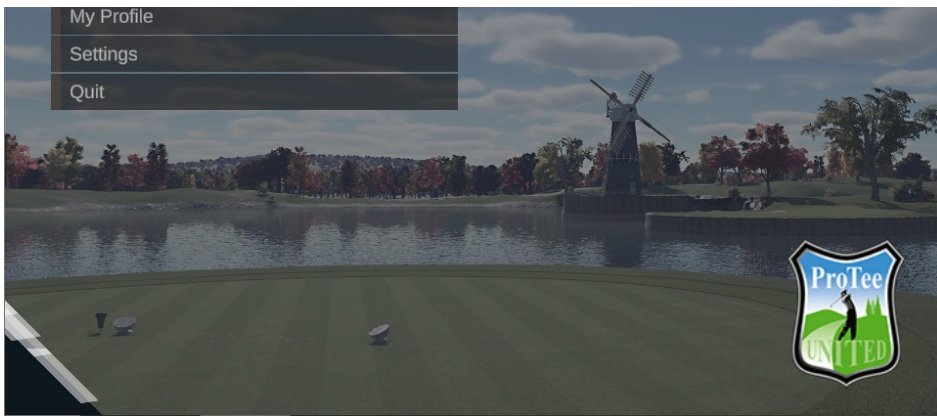
NOTE: The MACHINE ID found under LICENSES and the ACTIVATION CODE you received from FlightScope are required in order to receive your TGC License Key.

Make sure to copy and paste the machine ID into the registration form, as a typo in the machine ID will lead in to a license key that won't activate.

To copy, press and hold Ctrl (the control key) on the keyboard and then press the C on the keyboard. To paste, press and hold down Ctrl and then press V.

Register your copy of TGC online: <https://tgcsim.com/register>

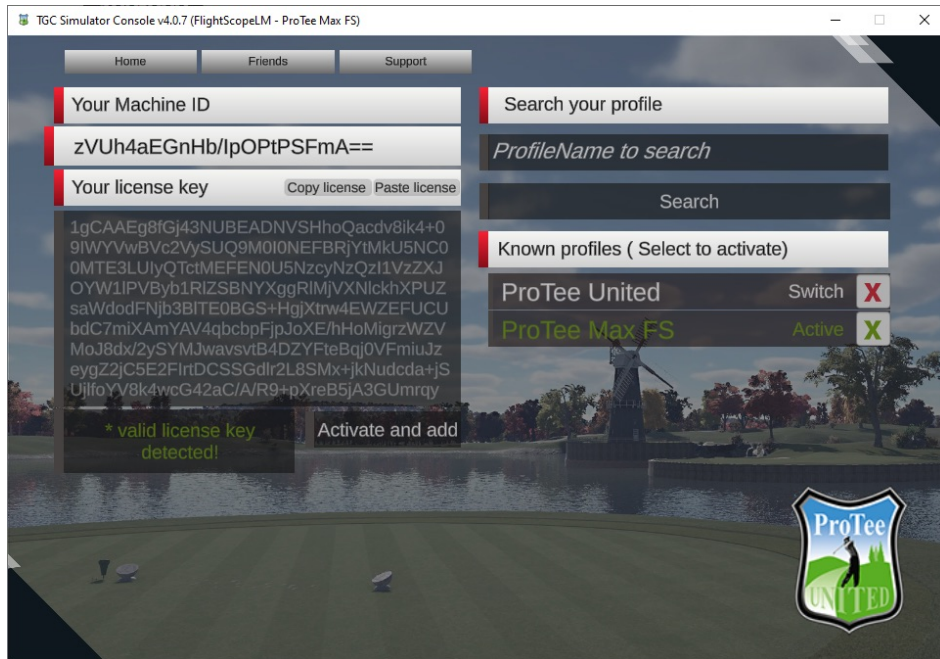




STEP 9:

NOTE: Paste the License Key you received into the LICENSE KEY field. Use your keyboard to copy and paste your license key.

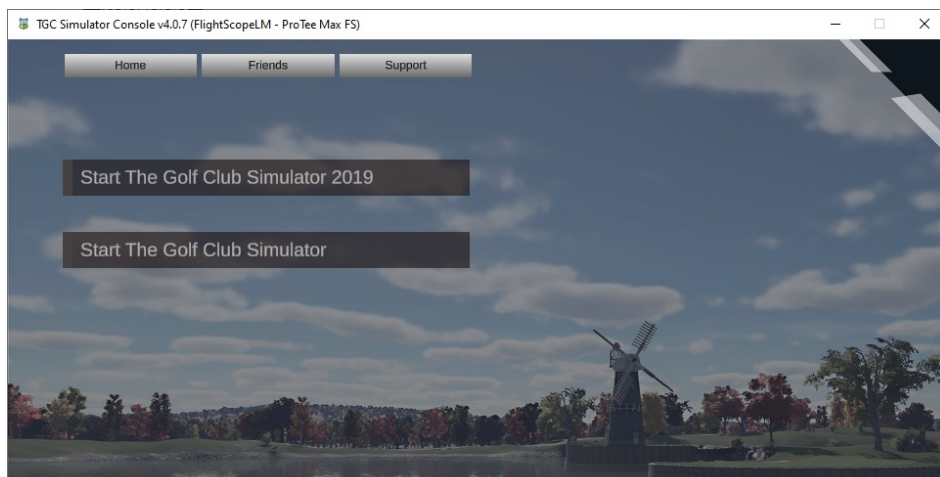
To copy, press and hold Ctrl (the control key) on the keyboard and then press the C on the keyboard. To paste, press and hold down Ctrl and then press V.



Step 10:

Once the license has been successfully activated simply click on Home and select Start Game.

TGC and/or TGC 2019 will show as an option depending on your purchase.





Was this article helpful? 0 out of 1 found this helpful



Have more questions? [Submit a request](#)

0 Comments

Article is closed for comments.