

Mevo+ User Manual



Performance data you can trust



| @flightscopegolf

“FlightScope technology is developed to offer you performance data you can trust in your pursuit of excellence.”

A handwritten signature in black ink, appearing to read "H. Johnson". The signature is fluid and cursive, with a large loop at the end of the last name.

Henri Johnson - Founder & CEO

FCC Statement: This equipment has been tested and found to comply with the limits for a Class B digital device, pursuant to Part 15 of the FCC Rules. These limits are designed to provide reasonable protection against harmful interference in a residential installation. This equipment generates, uses and can radiate radio frequency energy and, if not installed and used in accordance with the instructions, may cause harmful interference to radio communications. However, there is no guarantee that interference will not occur in a particular installation. If this equipment does cause harmful interference to radio or television reception, which can be determined by turning the equipment off and on, the user is encouraged to try to correct the interference by one or more of the following measures:

- Reorient or relocate the receiving antenna.
- Increase the separation between the equipment and receiver.
- Connect the equipment into an outlet on a circuit different from that to which the receiver is connected.
- Consult the dealer or an experienced radio/TV technician for help.

Changes or modifications not expressly approved by FlightScope (PTY) could void the user's authority to operate the equipment.

ISED Statement: This device contains licence-exempt transmitters(s)/receiver(s) that comply with Innovation, Science and Economic Development Canada's licence-exempt RSS(s).

Operation is subject to the following two conditions:

- (1) This device may not cause interference.
- (2) This device must accept any interference, including interference that may cause undesired operation of the device.

Declaration IC: Cet appareil contient des émetteurs/récepteurs exemptés de licence conformes à la norme Innovation, Sciences, et Développement économique Canada.

L'exploitation est autorisée aux deux conditions suivantes:

- (1) L'appareil ne doit pas produire de brouillage.
- (2) L'utilisateur de l'appareil doit accepter tout brouillage radioélectrique subi, même si le brouillage est susceptible d'en compromettre le fonctionnement.

Contents

Performance tracking	1	Setup	13
In the box	2	Setback	13
Mevo+	3	Aiming	14
Battery isolation tab	4	Clearance	15
Charging	5	Tips	16
Battery indicators	6	Indoor ball spin	18
System indicators	7	Tee the ball	19
Get the app	8	Switch off	20
Connect to Mevo+	9	Electronic noise	21
Easy method	9	Care	24
Manually (alternate method)	11	Avoid	25
Kickstand	12	FAQ's and support	26
		Technical specifications	28

Performance tracking

Visit MyFlightScope.com to analyze and track your performance over time.



Join the MyFlightScope.com community and connect with fellow golfers like yourself. Keep track of your stats over time, spot trends or tendencies and see how you have improved.



Practice with any FlightScope app and get instant feedback on your ball flight and swing, or challenge your friends and compete for a spot on our leaderboards.



All of your data is automatically uploaded to MyFlightScope.com where you can share your success with your coach and friends.

In the box

- 1 Mevo+
- 2 Case
- 3 Simulator angle*
- 4 Quickstart guide
- 5 Power adapter
- 6 USB charging cable
- 7 Wi-Fi adaptor** (fitted)
- 8 Reflective stickers***
- 9 Battery (fitted)
- 10 Cleaning cloth



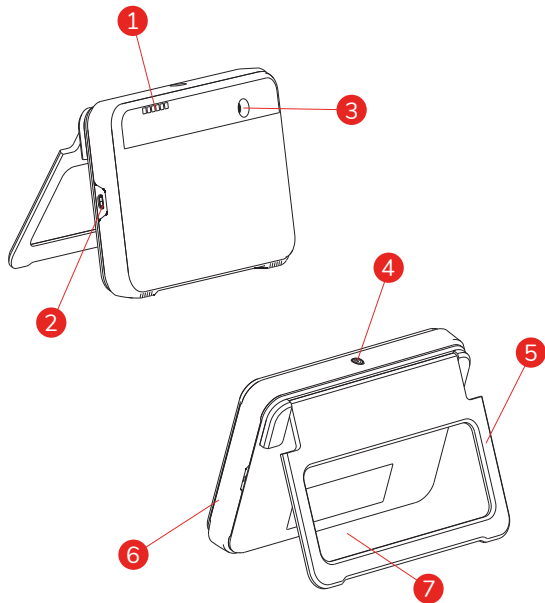
* Only for simulator setup.

** Wi-Fi adaptor for connectivity.

*** Only needed for indoor use.

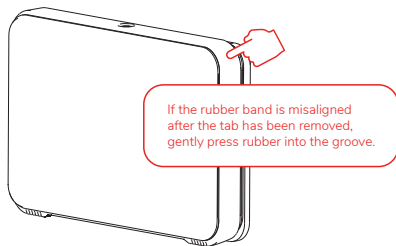
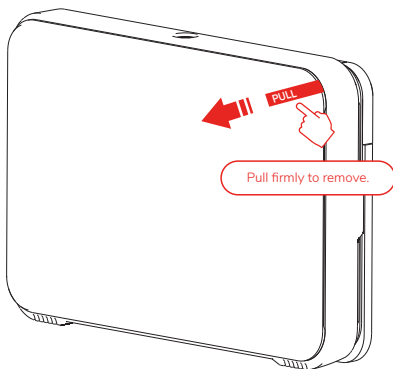
Mevo+

- 1 Indicators
- 2 USB charging port
- 3 Alignment camera
- 4 On/Off button
- 5 Kickstand
- 6 Battery and USB port (under rubber band)
- 7 Tripod mount (bottom of the unit)



Battery isolation tab

Before using, the battery isolation tab must be removed completely.



Charging

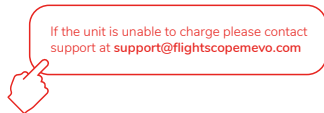
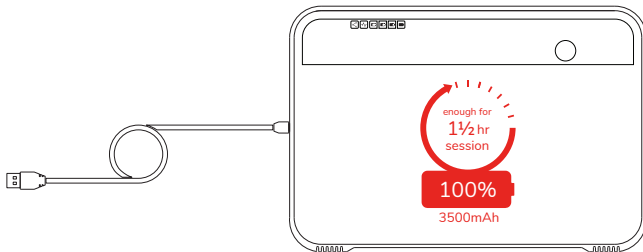
3-4hrs for a full charge using the supplied adapter.



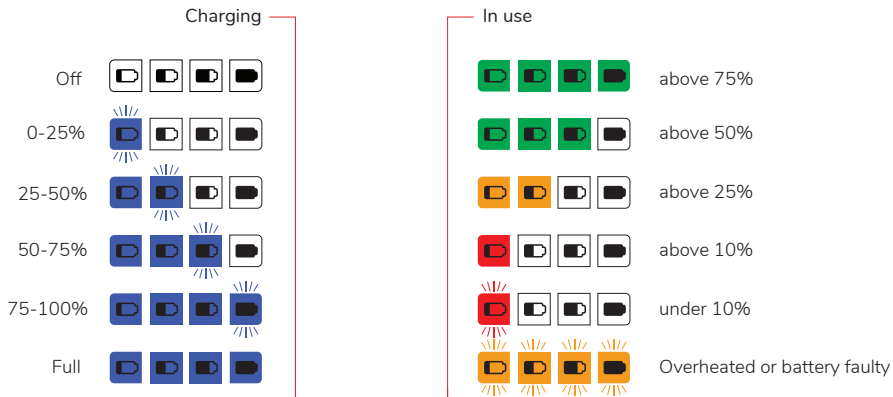
OR



Connect to PC laptop, up to 12hrs for a full charge.



Battery indicators



System indicators

Connection Status

Off



Ready



Connected



Radar Status



System off



Power on, switching on



Processor start up 30-60 seconds



Standby mode



Armed, ready to measure



Processor shut down 15-30 seconds



Battery empty

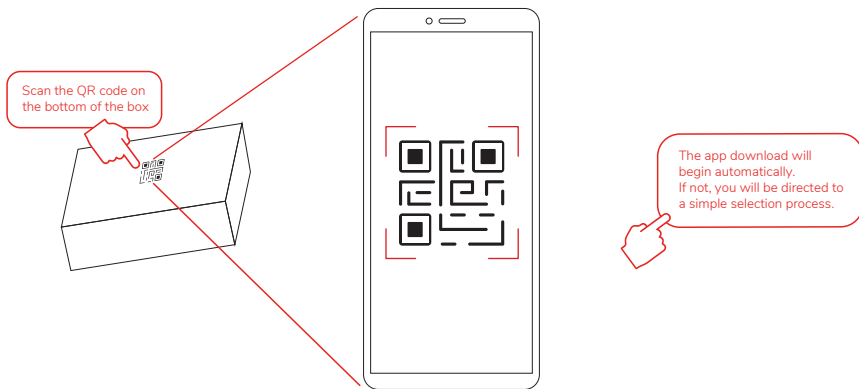


Error



Get the app

Download and install the **FS Golf** app.



Connect to Mevo+ (easy method)

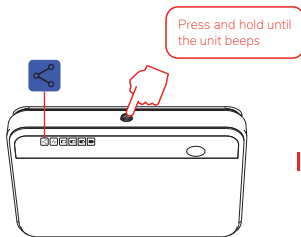
1



Wi-Fi on



2



Switch on



3

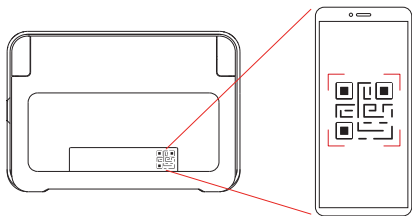


Launch FS Golf app



The username and password you setup will be the same for **myflightscope.com**

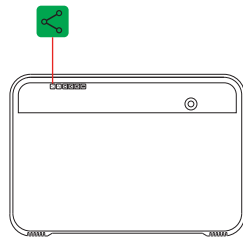
4



In app, scan QR code
on back of unit



5



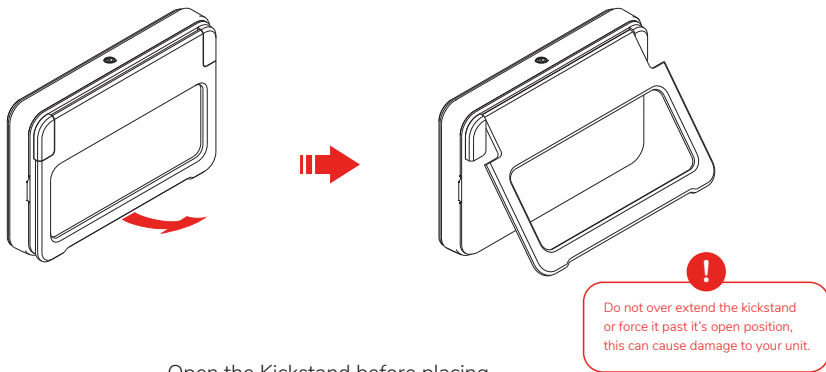
Connected

Connect manually (alternate method)

If you are unable to connect using the QR code, then you can connect manually in your device settings. Follow these easy steps:

- 1 Make sure your phone's Wi-Fi is turned on.
- 2 Press the on/off button on the unit, the system and battery lights will come on. The connection light will be solid blue while the unit is ready for connection.
- 3 Select Wi-Fi settings on your phone and select the unit with your serial number. The Wi-Fi password is your serial number, for example: M2-123456.
- 4 The connection light on the the unit will turn to solid green when connection has been established.
- 5 Launch the app on your phone and proceed.

Kickstand

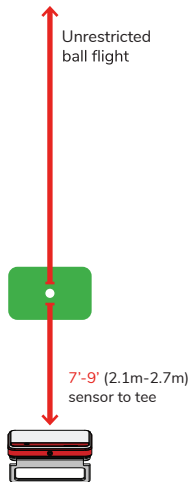


Open the Kickstand before placing.

Kickstand will stop at open position. With kickstand open, the radar will be at the correct tilt angle on a flat surface.

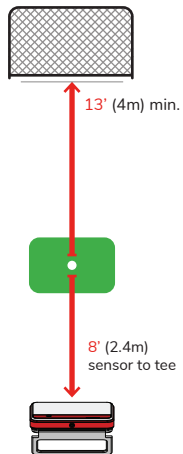
Setup - Setback

OUTDOOR



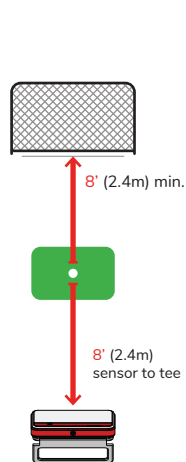
INDOOR

Metallic dots required



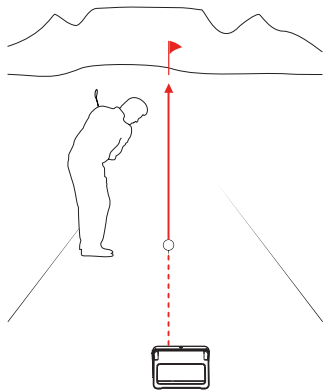
SHORT INDOOR

Metallic dots required

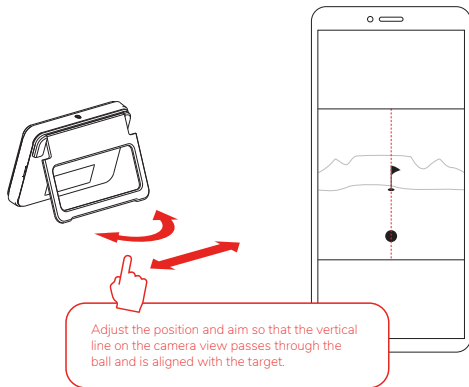


Aiming

- 1 Place the Mevo+ behind the ball position so that the camera aims along the chosen target line.

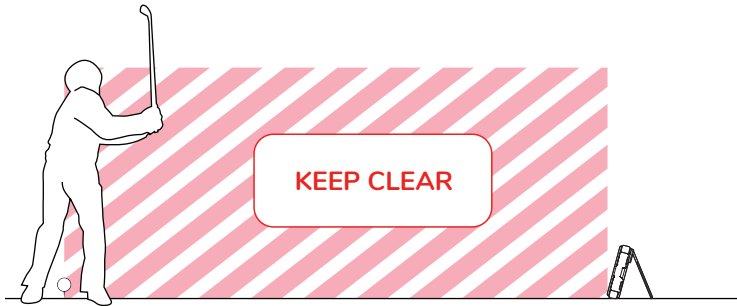


- 2 In the App, follow the instructions using the camera view to align.



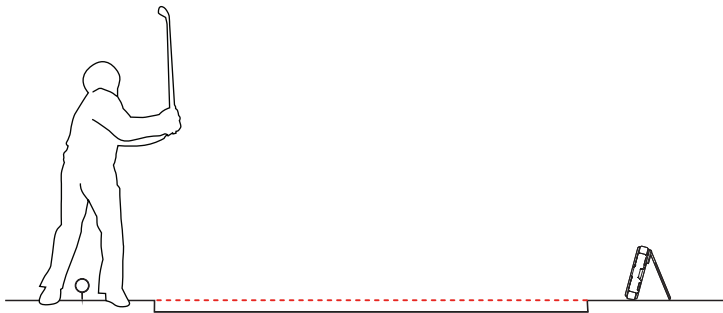
Clearance

Keep area between Mevo+ and the ball position clear of any objects and people.

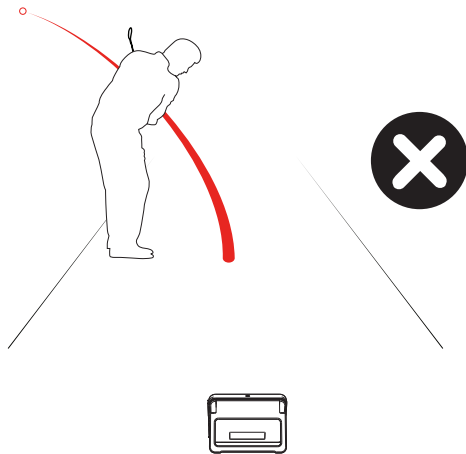


Tips

Keep the unit on the same level as the surface you are hitting from.

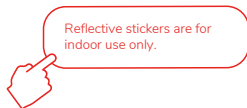


Extremely low and wide shots, and shots where the player is between the Mevo+ and the ball, might not register.



Indoor ball spin

For the best spin accuracy indoors, place a reflective sticker on the ball.

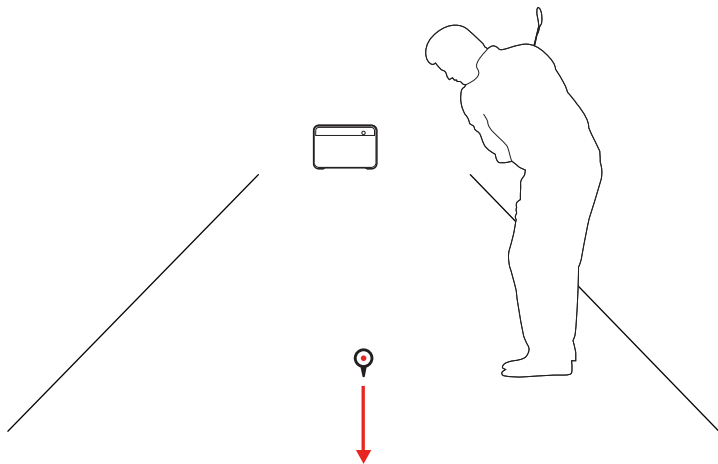


Reflective stickers are for indoor use only.

To order additional stickers: go to [flightscope/product-category/accessories](https://flightscope.com/product-category/accessories)

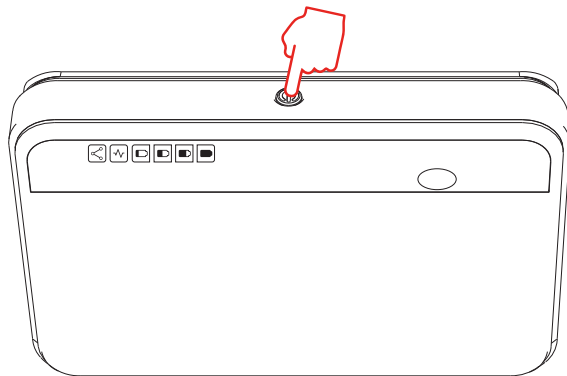
Tee the ball

Place the ball so that the sticker faces forward, directly away from the Mevo+.



**Sticker facing
towards target**

Switch off



Press and hold to turn off, unit will beep to confirm.
When all indicators are off, the unit is off.

Electronic noise

Mevo+ is designed to operate in most environments. However certain appliances and equipment can create noise that can interfere with resulting shots.

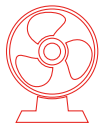
Some common noisy objects are:



aircon



fluorescent
lights



fans



tv's, laptops &
desktop computers
in front of the Mevo+

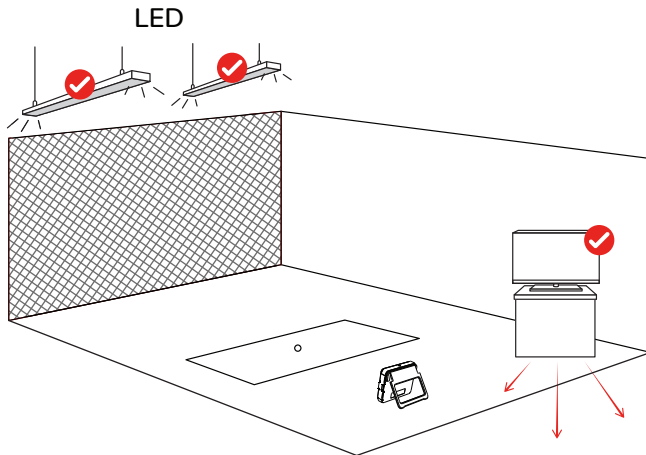


fridges

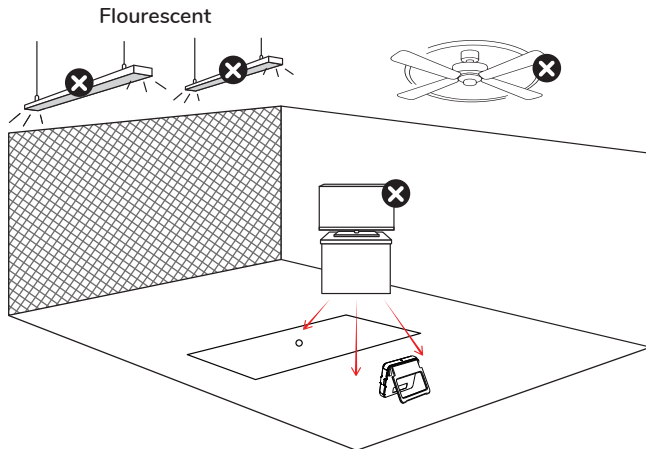


signal
towers

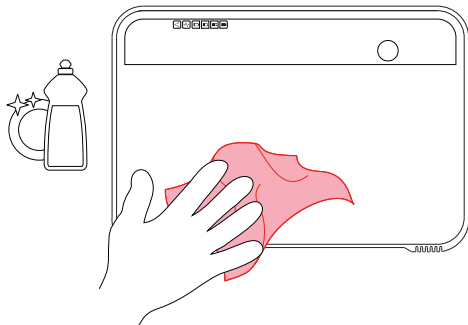
Keep area clear of possible noise interference. Make sure to move noisy electronic devices behind the unit.



Noisy electronic devices in front of the unit may cause poor tracking performance.



Care



Clean with a damp cloth and light household detergent



Store in the case

Avoid



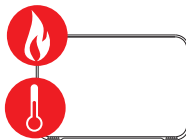
Moisture, including rain



Physical impact



Water immersion



Flames and direct heat



Excessive weight loading



Solvent Chemicals

FAQ's and support



Below are the top 5 frequently asked questions.
For more FAQ's please refer to flightscopemevo.com/faq

- 1. Can Mevo+ be used indoors and outdoors?**
Yes. Please check page 13 for indoor space requirements.
- 2. Does a reflective sticker need to be used?**
Yes, for indoor use only. See page 18.
- 3. How is the video recorded?**
The video is taken with your iPhone camera in the FS Golf application.
The radar is synchronized with your iPhone to automatically record and clip video of your swing with data overlay.
- 4. Can the built in camera be used for video?**
The built in camera is used for target alignment only.
- 5. How long is the battery life?**
The battery life is up to 2 hours on a full charge, and up to 1.5 hours in simulator play.

We recommend you browse the **FAQ's** on the **website** or check out the **mevo chat forum** before submitting a support question to the MEVO team.

If you need assistance please email our support team at

support@flightscopemevo.com

Technical specifications

transceiver

*operating frequency	24.08 - 24.16 GHz (nominal)
output power (EIRP)	24dBm +/- 3dBm USA 17dBm +/-3dBm EU

* Other frequencies ranges may apply in certain countries

electrical, physical, and general

operating temperature	0°C to 40°C / 32°F to 100°F
dimensions	6.8" x 1.2" x 4.6" / 174 x 31 x 118mm (W x D x H)
mass	1lb / 465g
power supply	5V DC +/- 5%; >2 A
battery	Rechargeable Li-ion Battery, 3.6V, 3500mAh 12.6Wh
camera	5MP
data interfaces	USB 2.0



FlightScope[®]

Performance data you can trust

flightscopemevo.com

myflightscope.com