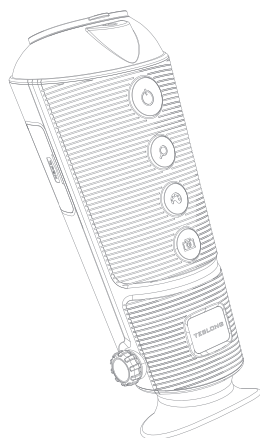


TESLONG

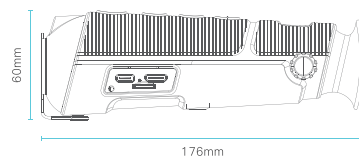
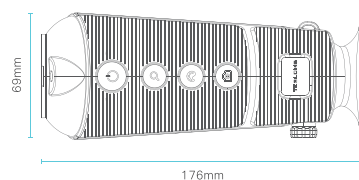
TTS260 Infrared Thermal Monocular

USER MANUAL



## Overview

The Teslong TTS260 is a pocket-sized thermal vision monocular for exploring the outdoors at night and in lowlight conditions. TTS260 reveals your surroundings and helps you see people, objects and animals up to 1061yards (970meters) away. Simple to use , The Teslong TTS260 records still images, and is the perfect companion , whether in the back country or your own backyard.



- 1 -

## Product Specifications

Parameter	Specification
Sensor Type	260x200 Infrared Sensor
Frequency Band	8-14um
Image Frequency	50Hz
Focal Length	11mm
Field of View (H x V)	15° x 12°
Boot Time	<2 seconds
Zoom	1x, 2x, 4x
Image Capture	Yes
Hot Spot Tracing	Yes
Video Output	Mini HDMI Port
Data Transfer	USB type-C Port
Storage Card	16GB Micro-SD
Built-In Display	720x540 LCOS display
Color Palette	Iron, Red hot, White hot, Black hot, Green hot
Battery Type	Built-in Li-Ion
Battery Life (operating)	>10 hours @25°C(77°F)
Operating temperature range	-20°C to +50°C (-4°F to +122°F)
Storage Temperature Range	-40°C to +60°C (-40°F to +140°F)
Net Weight	327g
Gross Weight	473g
Product Dimension	176mm x 69mm x 60mm
Package dimension	201mm x 116mm x 84mm
Package Contents	Thermal Monocular, Lanyard, USB Cable,Storage Bag

- 2 -



## Customer Service

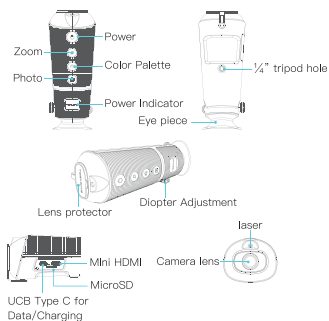
We offer a 12-month warranty for our products. If you have any questions during this period, please contact us for free after-sales supports.

877-899-8809(Toll-free)  
(Mon-Fri 9am to 5pm PST)

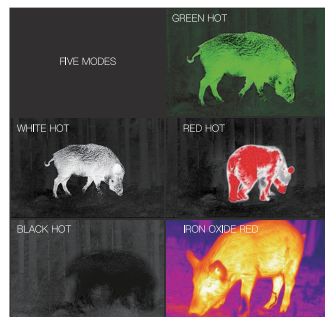
support@teslong.com

FC CE RoHS  
© TESLONG TTS260 B0525 V3.0  
3.06.06.000505

## User Interface



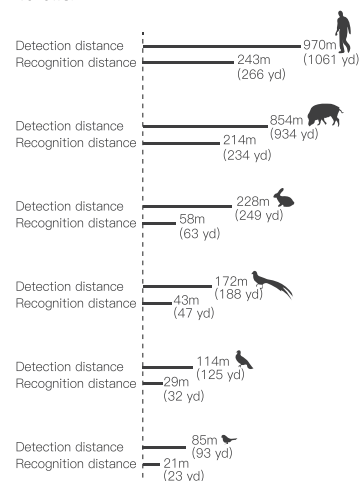
## Display Modes(Color Palette)



- 3 -

## Detection Distance

The detection and recognition distances areas follows:



- 4 -

## Precautions for use

- Do not look directly at high-energy light sources such as sunlight and laser. Otherwise it will cause irreversible physical damage to the equipment and is not within the scope of warranty.
- Avoid eye exposure to direct or scattered laser light.
- Product charging environment: 0 °C ~ 40 °C

## Package Contents

The package contains the following accessories:

- Infrared Thermal Monocular
- Lanyard
- USB Cable
- User Manual
- Storage Bag

- 5 -

## Maintenance:

To clean this device, use a damp cloth or mild, water-based cleaner. Fully charge the battery before you leave this device idle for a long time to prevent battery damage.

## Information on disposal:

Electronic equipment does not belong to domestic waste but must be disposed in accordance with the applicable statutory provisions.

This device is NOT for medical use or human examination.

- 6 -