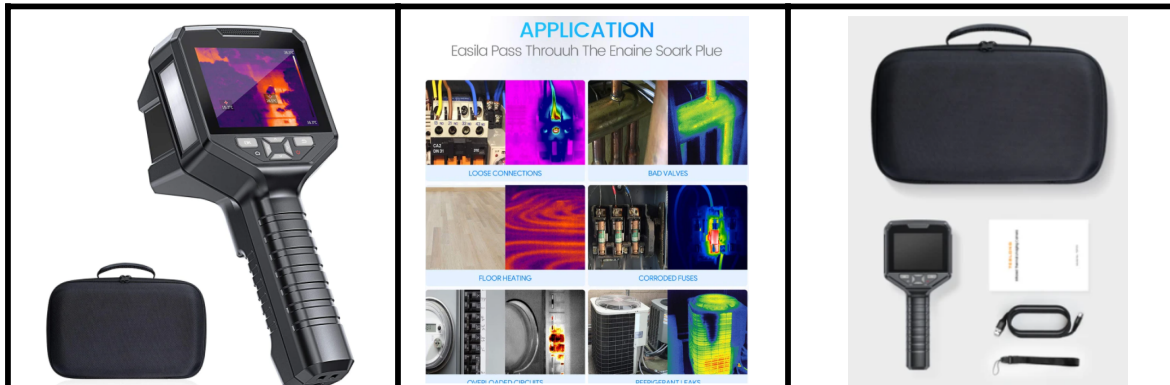


TDP100 User Guide



Physical Buttons (Functionality)

Button	Primary Function	Secondary Function
OK	(on Homescreen) Access Menus & Settings	Select highlighted option.
Up / Down	Toggle through "Image Mode" options	Navigate through Menus & Settings
Left / Right	Toggle through "Color Palette" options	Navigate through Menus & Settings
Return	(on Homescreen) Access Menus & Settings	n/a
Trigger	(press) Return 1 step to the prior instance	(hold) Power [off/on] device

User Interface

Homescreen Item	Description	Position (on Screen)
Emissivity	Measures the ratio of the energy radiated from a material's surface to that radiated from the device.	Top-Left
Time (24hr Format)	Displays the current time.	Top-Center
Battery Indicator	Displays the current status of the battery capacity.	Top-Right

Menu Settings & Assorted Options		
Option	Description & Associated Information	
Thermal ACG	Select between 3 modes thermal imaging contrast (High Contrast, Normal, Smooth).	
	• High Contrast:	Shows more temperature data & thermal variations, but with more visual grain.
	• Normal:	Shows temperature data & thermal variations, with only moderate visual grain.
	• Smooth:	Shows less temperature data & thermal variations, but with no visual grain.
Color Palette	Select between various thermal imaging color sets (Tyrian, White Hot, Black Hot, Rainbow, Glory, Iron).	
	• Tyrian:	WHITE (Hot), RED, BLUE (Cold) color scheme
	• White Hot:	WHITE (Hot), GRAY, BLACK (Cold) color scheme
	• Black Hot:	BLACK (Hot), GRAY, WHITE (Cold) color scheme
	• Rainbow:	WHITE (Hot), RED, YELLOW, GREEN, BLUE (Cold) color scheme
	• Glory:	BLACK (Hot), RED, YELLOW, GRAY, WHITE (Cold) color scheme
	• Iron:	WHITE (Hot), ORANGE, PURPLE, BLACK (Cold) color scheme
Settings	Various adjustable settings & functions.	
	• Language:	Select your desired language
	• Emissivity:	Edit the "Matte", "Semi-Matte", "Semi-Glossy", "Glossy" & "Edit (Custom)" values.
	• Temp. Alarm:	Toggle & edit "Upper Threshold" & "Lower Threshold" temperatures (off / on).
	• WiFi:	Toggle WiFi connectivity [off/on] ; Option to "Refresh Password" ; View SSID & current Password
	*** "Refresh Password" option generates a new, random password to connect to the device, via WiFi.	
	• LED (Flashlight):	Toggle LED flashlight [off/on].
	• Temp. Unit:	Toggle between Fahrenheit (°F) & Celsius (°C) units of measurement.
	• Storage:	Remaining memory capacity.
	• Date:	Adjust date & time settings.
	• Auto Power-OFF:	Duration of time to elapse before device shuts itself off (5min, 10min, 30min, 60min).
	• Temp. Bar:	Toggle the Temperature Bar [off/on].
	• Brightness:	Adjust the amount of the screen's brightness.
	• Factory Reset:	Wipe all data to restore default settings from the factory.
	• About:	View the Model, Serial No., Firmware Version, Software Version, WiFi MAC Address.
Album (Gallery)	Review previously captured photos & videos.	

Menu Settings & Assorted Options (<i>continued</i>)		
Option	Description & Associated Information	
Measurement	Toggle (off / on) measurement features (No measurements, Center spot, Hot spot, Cold spot, Zone, Edit Zone).	
	• No Measurements:	Remove all measurements from appearing on the screen.
	• Center Spot:	Obtains temperature measurements from a reticle in the center.
	• Hot Spot:	Identifies the hottest spot within the zone with an additional reticle.
	• Cold Spot:	Identifies the coldest spot in the view with an additional reticle.
	• Zone:	Establishes the boundary of where temperature measurements are sampled.
	• Edit Zone:	Edit the size of the boundary that establishes the zone.
Image Mode	Select between various modes thermal imaging (Outline Fusion, Overlay Fusion, Picture-in-Picture, etc.).	
	• Outline Fusion:	Thermal view with emphasized outlines within the view.
	• Overlay Fusion:	Displays normal visuals, overlayed atop the thermal view.
	• Picture-in-Picture:	Normal visuals with thermal view only within the "Zone".
	• Thermal:	Thermal visuals across the entire view.
	• Visible:	Normal visuals across the entire view.
	• Fusion Adjustment:	?
	• Offset Adjustment:	?