

osmo

OrthoVivid Water Flosser



User Manual

osmo

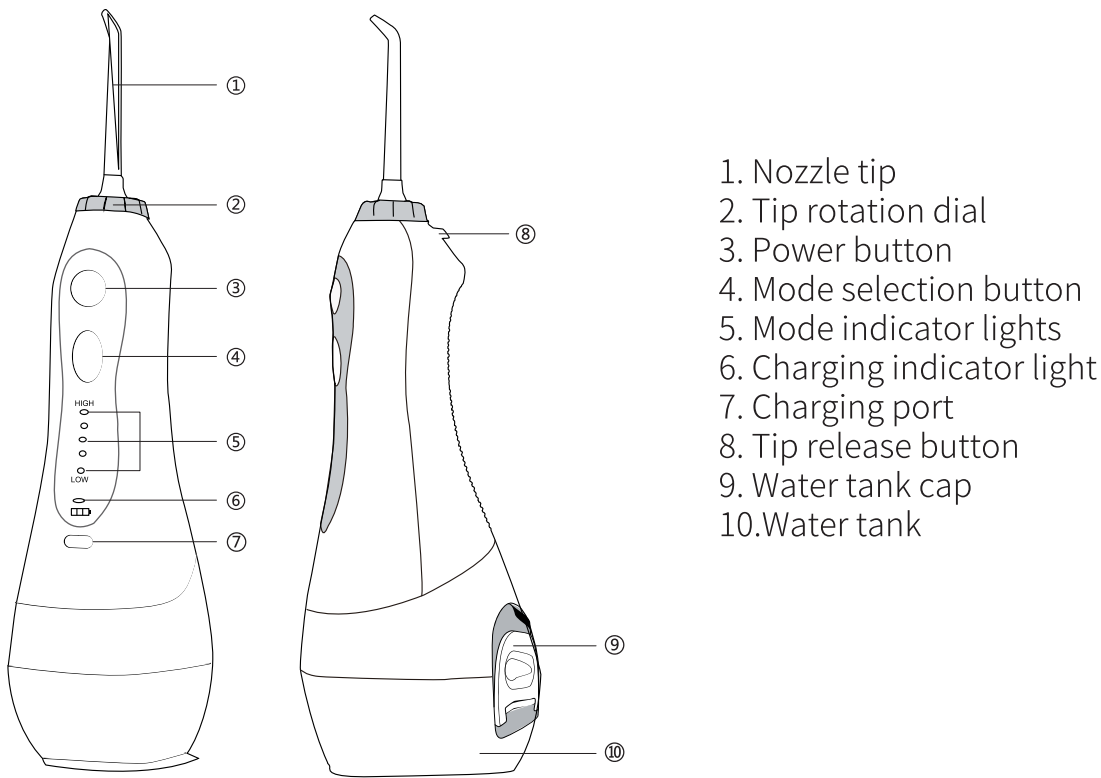


To read the user manual in a
different language,
go to osmousermanual.com

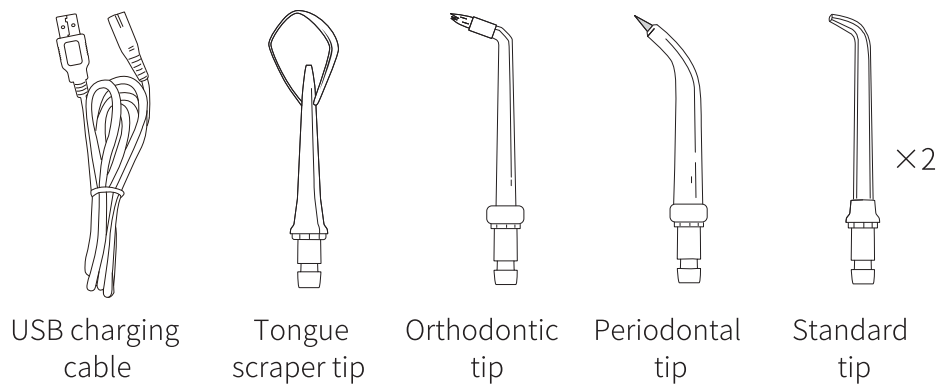


Model	HF-6	Input	5V 1A
Material	ABS, PC	Water Pressure Range	40-110 psi
Charging Time	3-5 Hours	Waterproof	IPX7
Capacity	300 ML	Water Pressure	Pulsate Water

Fittings



Accessories





IMPORTANT SAFEGUARDS

When using electrical products, especially when children are present, basic safety precautions should always be followed, including the following

READ ALL INSTRUCTIONS BEFORE USING.

DANGER:

To reduce the risk of electrocution:

Do not handle charger with wet hands.

Do not place charger in or drop charger into water or other liquid.

Check the charger cord for damage before the first use and during the life of the product.

Use this product only as indicated in these instructions or as recommended by your dental professional.

Only use tips and accessories that are recommended by OrthoVivid,.

Do not drop or insert any foreign object into any opening on the product.

Keep charging unit and cord away from heated surfaces.

Do not use this product outdoors or operate where aerosol (spray) products are being used or where oxygen is being administered.

Do not use iodine, saline (salt solution), or water insoluble concentrated essential oils in this product. Use of these can reduce performance and will shorten the life of the product. Use of these products may void warranty.

Fill reservoir with water or other dental professional recommended solution only.

Remove any oral jewelry prior to use of this product.

Do not use if you have an open wound on your tongue or in your mouth.

Maintenance

Make sure to throw out the water inside the tank. and run the appliance for 2 to 3 seconds to drain the water after usage. Otherwise bacteria could collect in the remaining water. Do not submerge the unit in water or any other liquid. Wipe the exterior when necessary with a soft cloth and mild non-abrasive cleanser. Reservoir may be washed with soapy water. Wash the dirt off from inside using a brush or similar, and wipe off with a cloth Dry the reservoir when not using for a long period.

Battery Care and Disposal

The unit contains a Lithium battery. At the end of the battery life, please recycle the unit at your nearest recycle center per local or state requirements. The battery is not replaceable.

Warranty

OrthoVivid will repair or replace(at our option) your unit free of charge for 12 months from the date of purchase if the appliance is defective in workmanship or materials. This guarantee does not cover: damage due to improper use, normal wear or use as defects that have a negligible effect on the value or operation of the appliance. The guarantee becomes void if repairs are undertaken by unauthorized persons and if original OrthoVivid parts are not used. To obtain service within the guarantee period, hand in or send the complete appliance with your purchase receipt to an authorized OrthoVivid distributor/customer service center in your country. Purchaser is responsible for all postage and freight charges and any other expenses incidental to claiming against this Warranty.

Note: Excessive heat will cause machine to stop when in use, Switch off machine, cool for 2 hours and re-start

WARNING:

To reduce the risk of burns, electrocution, fire, or injury to persons:

Do not plug this device into a voltage system that is different from the voltage system specified on the device or charger. improper voltage will damage product and VOID warranty.

If product is opened/disassembled for ANY reason, warranty is VOID.

Do not use this product if it has a damaged cord or plug, if it is not working properly, if it has been dropped or damaged, or dropped into water.

Do not direct water under the tongue, into the ear, nose or other delicate areas. This product is capable of producing pressures that may cause serious damage in these areas.

Do not direct water into the nose or ear. The potentially deadly amoeba, *Naegleria fowleri*, may be present in some tap water or unchlorinated well water and may be fatal if directed into these areas.

If your physician advised you to receive antibiotic premedication before dental procedures, you should consult your dentist before using this instrument or any other oral hygiene aid.

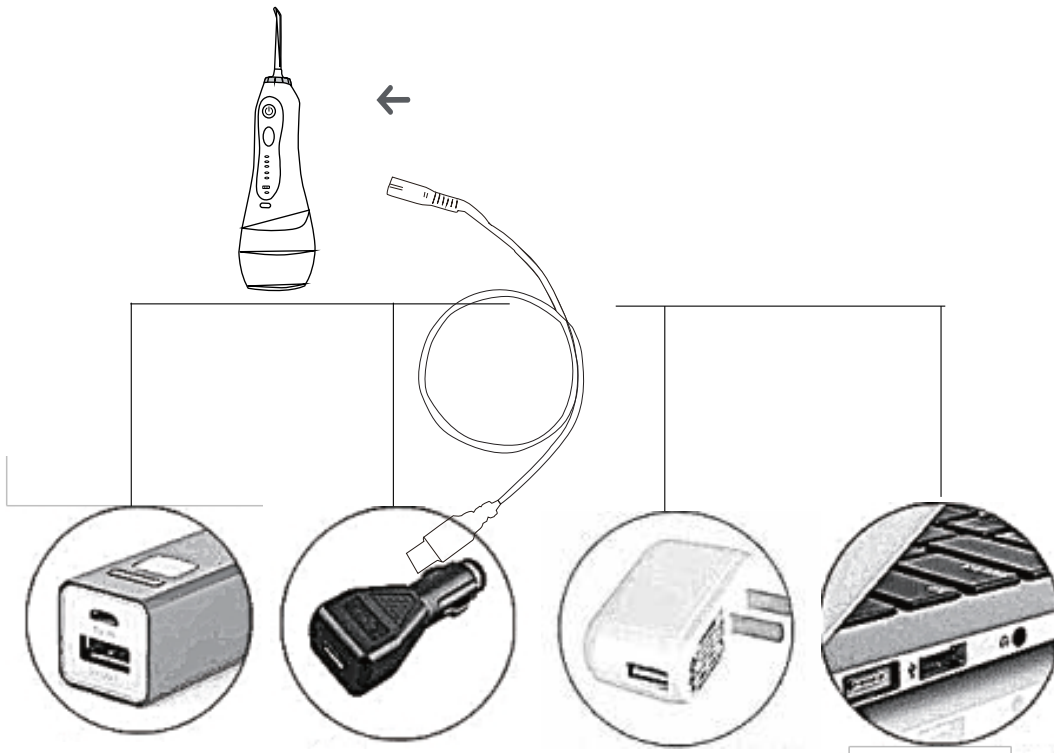
Close supervision is necessary when this product is used by, on or near children or invalids.

Children should be supervised to ensure that they do not play with the appliance.

SAVE THESE INSTRUCTIONS.



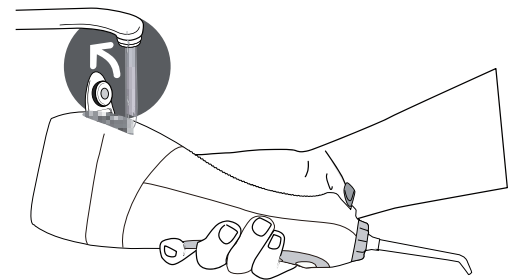
Charging Unit Prior to First Use



This product does not come with an AC/DC charger. The unit is charge through devices with 5V USB's power capabilities such as a mobile phone, laptop, USB power wall charger, etc. The charge indicator on the handle will flash when charging and will stay on continuously when the unit is fully charged. A complete recharge will take 3-5 hours.

Filling the Reservoir

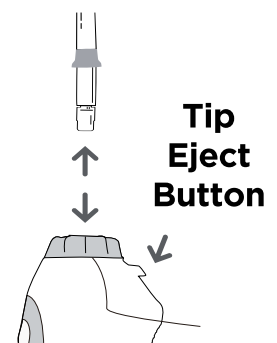
Lift flip top on reservoir and fill the reservoir with lukewarm water.



Inserting and Removing Tips

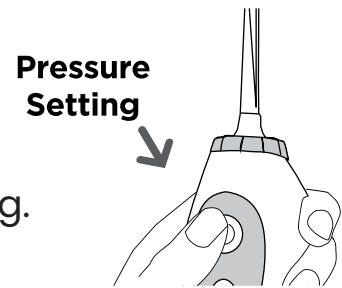
Insert tip into the center of the knob at the top of the Water Flosser handle. Press firmly until the tip clicks into place. To remove the tip from the handle, press the tip eject button and pull tip from the handle.

CAUTION: Do not press tip eject button while unit is running.



Adjusting the Pressure Setting

You can adjust the pressure setting on your Water Flosser by pressing the mode button on the handle. Start with the lowest setting and increase to your liking.

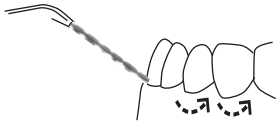


When Finished

Turn the unit off. Empty any liquid left in the reservoir.

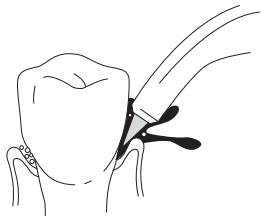
TIP USAGE

Jet Tip



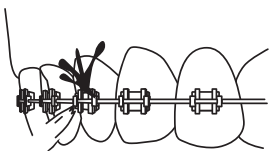
Been over the sink and guide the jet to your teeth and gums. Glide the handle switch up to start the water stream. Keep your mouth slightly open to allow the water to run into the sink. Direct the stream of water towards the gum line at 90 degrees, so that contact is made where the tooth and gums meet. Maneuver the flow of water from tooth to tooth remembering to pause briefly between each tooth.

Periodontal Tip



Place the periodontal tip in contact between teeth and the gumline. Lean the soft tip against a tooth at a 45-degree angle and gently place the tip 1/8" / under the gum line, into the pocket. Start the irrigator by setting it at the lowest pressure and clean by gently following gumline, inserting the periodontal tip in between teeth. Continue tracing along the gumline to massage the gums and safely deliver solution into the gingival pockets below the gumline.

Orthodontic Tip



Use the Orthodontic Tip to simultaneously brush and rinse hard-to-reach areas around braces, crowns, bridges and implants. Start on the last molar (back tooth). Place tip at 90 degree angle to the tooth at the gumline. Gently glide tip along gumline, pausing briefly to lightly brush area between teeth and all around orthodontic bracket. Before proceeding to the next tooth and outside of both the upper and lower teeth. Continue process until you have cleaned the inside



Tongue Cleaner Tip

Lean your head over the sink. Glide the pressure button to the lowest setting. Start the irrigator and place the tongue cleaner at the back of your tongue and move it forward to clean your tongue. Repeat to cover entire tongue. Set the pressure to the lowest setting and adjust to a hinger setting for more water pressure as it feels comfortable.

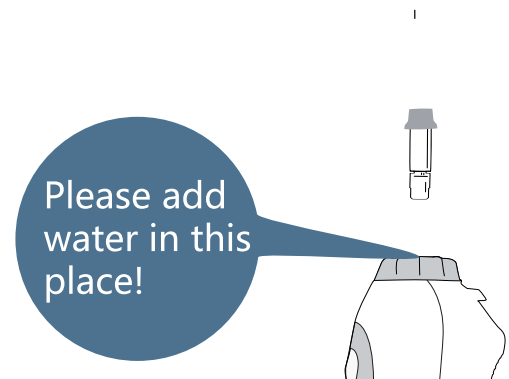
Troubleshooting

Problem	Cause	Corrective action
Reservoir leaks	Seal ring is abnormal	Remove the seal ring and reinstall
Low water pressure	Low battery	Recharge the device
	Nozzle head blocks	Replace with new nozzle heads
Lasts only few minutes with full charge	Dead battery	Contact retailers
	Charging cord	Try with new charging cable
	adapter broken	Try with new adapter
Motor makes sound but no water coming out	Nozzle head blocks	Replace with new tips
	Suction valve dislocation	Keep device on, fill water to the hole where nozzle head goes into
Motor doesn't make sound	Low Battery (Keep the device idle for more than 3 month))	Activate the battery by recharging it for 16 hours
Product stopped working suddenly	Overheating protection is activated (Continuous use 5 tanks of water with highest pressure)	Restart the device in 2 hour

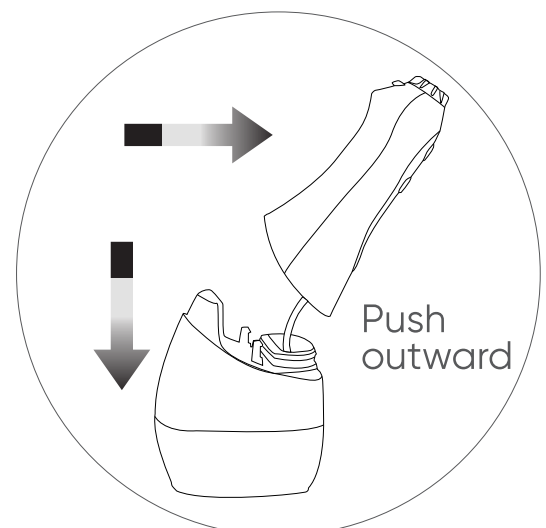
If your problem still hasn't been fixed by above troubleshooting, please kindly contact with the retailers for help.

- It may occur below situation when first time use this machine or left it unused for a long time: The nozzle head won't spray water immediately after turning on the machine. In this case, please follow below instructions to make it work: Add proper amount of water into the place where tips are inserted in.

Insert the tip in and press power button to turn on the device.



- The water tank is detachable by simply pulling it. It may need to take a bit force when first time to remove it. But after that, it will become much easier.



osmo



To read the user manual in a different language,
go to osmousermanual.com

Have any questions or need more assistance?

Send us an email at support@tryosmo.com
and we'll be happy to help you!