

# osmo

---

## KITTY FIND USER MANUAL



**Scan the QR code to download APP**



Tracking platform: [www.365gps.net](http://www.365gps.net)  
Android application: GPS365 / 365GPS  
iOS application: GPS365 / 365GPS  
Login ID: IMEI number (sticker inside)  
Default password: The last 6 digits of IMEI

1. Please comply with your local laws and regulations to use our GPS tracking devices and protect user's privacy, our GPS tracker are used for personal/pet/vehicle/belonging/assets security tracking only.
2. To protect your rights and interests, please don't leak your GPS IMEI # and password to anyone, and remember to modify the password after GPS tracker online.
3. The GPS tracker need to communicate with your local telecom operators via 4G network, there may be communication delay in the low 4G signal area.

### **Main Features:**

- Network: 4G LTE-FDD B1/B3/B5/B8 LTE-TDD
- B34/B38/B39/B40/B41 support TCP/IP protocol
- Positioning methods: GPS and BDS and WIFI and LBS
- Tracking system: APP and Web and SMS
- Track and historical trace playback
- Voice recording and pick up
- Support two ways SOS communication similar like phone talking
- Geo-fence
- GPS location time:
  - Cold Boot-38s(Open sky)
  - Warm Boot-2s(Open sky)
- The specific time is affected by the environment
- GPS location accuracy: within 10 meters outdoor
- WIFI location accuracy: within 100 meters
- LBS location accuracy: above 100 meters
- GPS tracker Working temperature: -20 45
- GPS tracker working humidity: 5% 95%

## 1. Preparation Before Use

- Please prepare a 4G nano SIM card , (Please check our device 4G bands with your SIM card provider ),For new SIM card, you can put it in your phone to active it and check the 4G LTE data function, it's better to set off the PIN code of the sim card.
- Please make sure the GSM SIM card for GPS tracker is able to make a regular phone call and show the phone # so that you can use the GPS tracker to make SOS emergency phone calling and realize the pick up function.
- Scan QR code in first page to download APP.

## 2. Power on the GPS and make GPS online

- Open the device SIM card cover and sim slot, put in sim card then press power key for 3 seconds till 3 LED on.
- Power On: long press power key for 3 seconds(3 LED will light up together and then blinking).
- Power off: Press the power key for 9 seconds (3 LED will light on together then off ).

LED Light	Function	Blinking Slow	Blinking Fast	LED Off/Not Blinking
Red	Battery Level	Battery up to 30%	Low battery	Power off/ Sleep Mode
Yellow	SIM Signal	GPS tracker online	GPS tracker offline	Invalid SIM/ Sleep Mode
Blue	GPS Signal	GPS online	Searching GPS	Power Off/Sleep Mode

- When the GPS tracker yellow LED blinking slow, it means the GPS tracker is online and ready to be tracked by mobile
- APP/PC web: There is a QR code sticker include 15 digits IMEI with each unit device, the available method to login the APP:

1. Input the device IMEI and password manually.
2. Scan the QR code and it will login the app automatically.

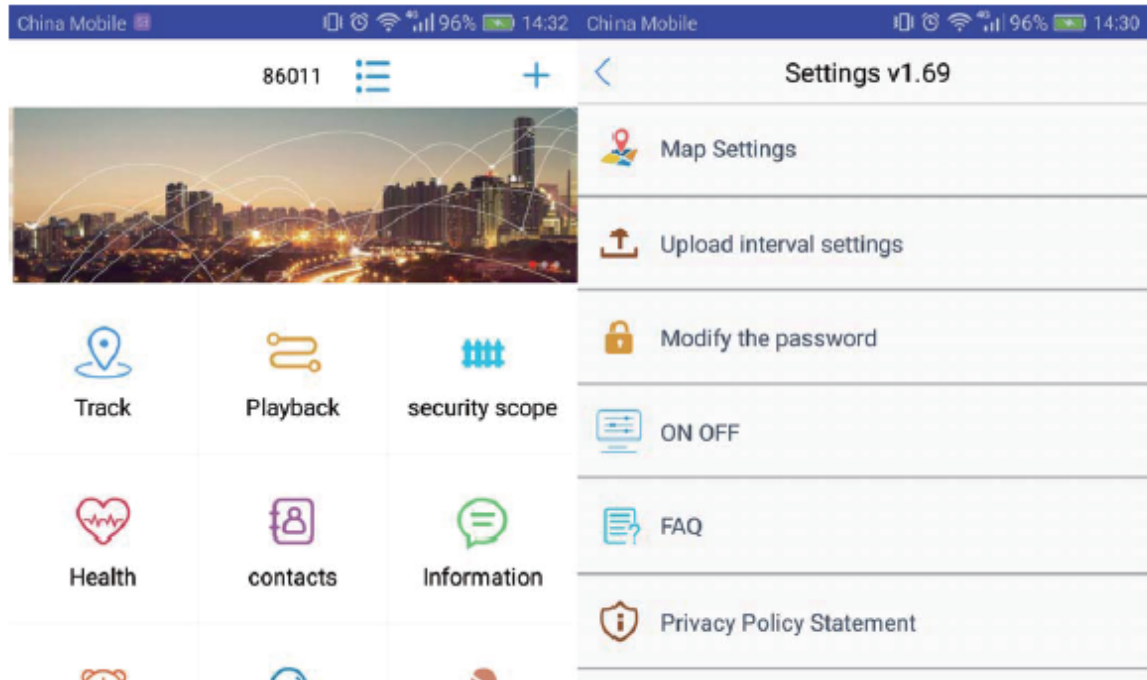


**Login ID:** IMEI number.

**Password:** The last 6 digits of device IMEI.

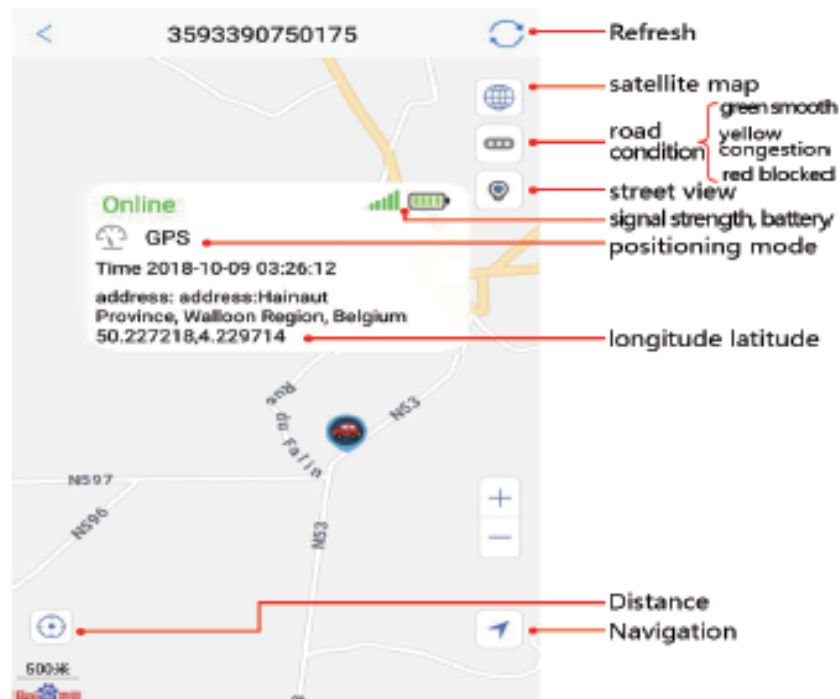
(If you forgot your device IMEI or password, please contact our after service/sales timely for assistance)

## 4. Main Functions

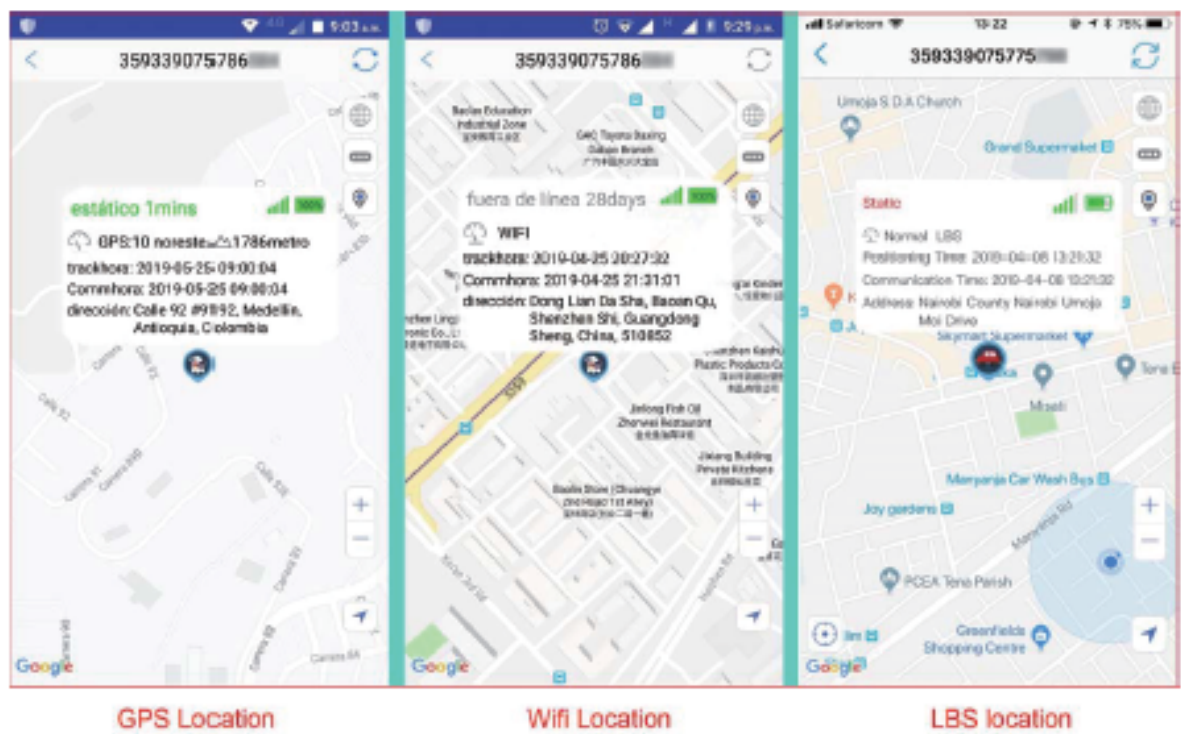


**Tips:** to make battery work longer time, we suggest you set longer location uploading interval in "Setting"--> "Upload interval settings" and enable the function in "Power saving".

## A. Track



Our device support 3 different positioning methods below:



The difference among the positioning methods are below:

- GPS positioning: when the GPS tracker stay outdoor/good GPS signal environment, the GPS tracker will show you accuracy GPS location on the map.
- WIFI positioning: when you put the GPS tracker in a place where the GPS signal is weak/not available, but the WIFI signal is available, for example: in your home/office/mall, the GPS will capture the WIFI router IP address and show the WIFI location on the map.
- LBS positioning: when both GPS and Wifi signal are not available for the GPS tracker, it will give you a general location according to the nearest 4G signal tower around it and show that location on the map.
- GPS tracker location accuracy:

**GPS:** normally below 10 meters outdoor.

**WIFI:** below 100 meters due to the wifi signal valid range normally can reach 100 meters maximum.

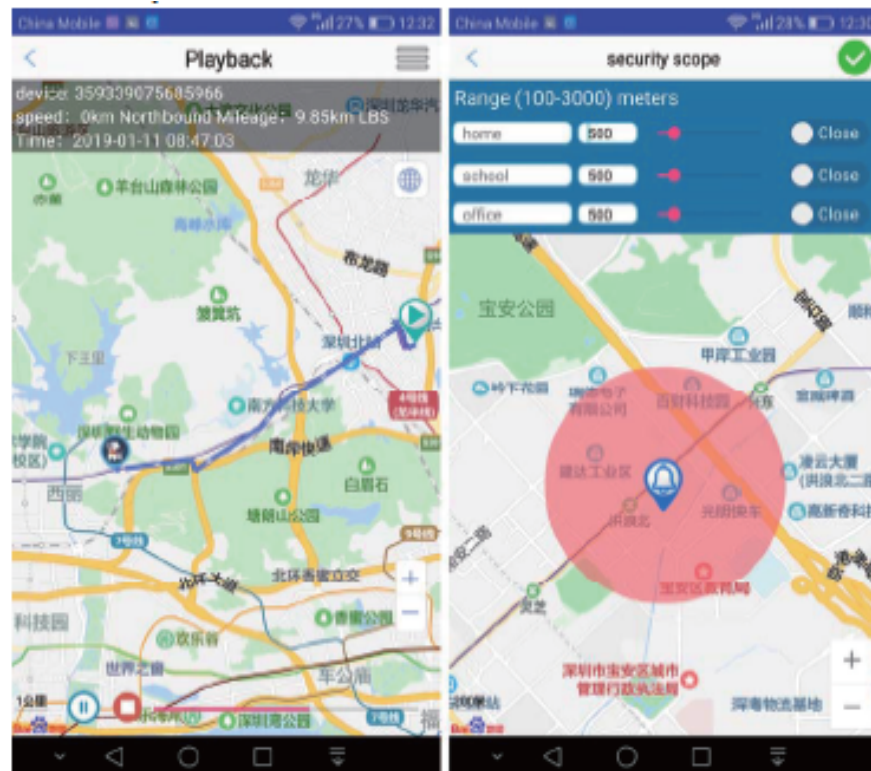
**LBS:** above 100 meters, normally, if the tracker stay in the city, the LBS location accuracy will be much more accurate than that stay in the countryside.

## **B. Playback and Geo-fence**

### **Playback:**

Please choose the start time and end time and other options in the APP to check the historical trace of your GPS tracker and show it on the map as below.



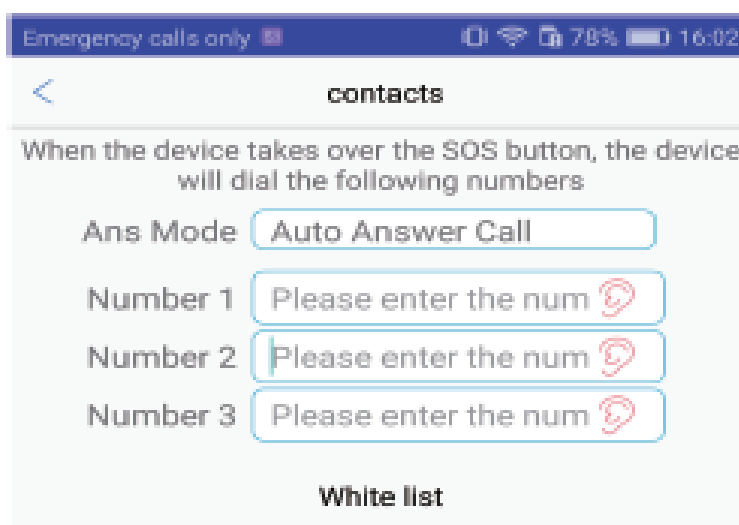


### Geo-fence:

You can set a security range on the map in your app, once your GPS tracker out of the preset safe range, you will get alarm.

### C. Contact & SOS

This function is for the security of your family members, especially for kids/ elderly to make SOS calling when they need help in emergency.

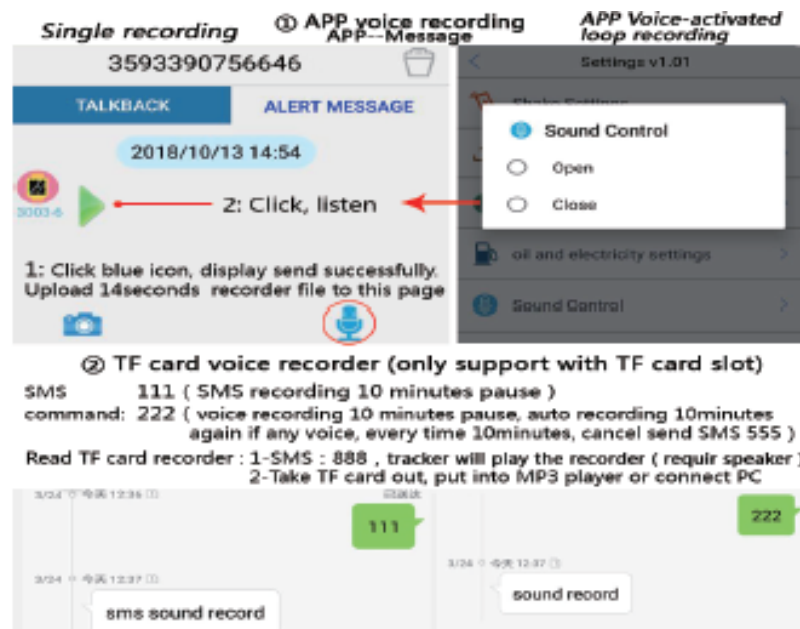


**SOS button:** Press it for 3 seconds the GPS tracker will dial the Number 1 firstly, if the Number 1 no answer, it will dial the Number 2 automatically, if the Number 2 no answer, it will dial the Number 3 automatically.

**Tips:** To enable the SOS calling function, please preset the Phone number Number 1, Number 2, Number 3 # in APP, choose the correct answer mode and please make sure the SIM card in the GPS tracker have enough airtime balance.

#### D. Information (Voice Recorder)

You can click the MIC icon in the App to send voice recording request to the GPS tracker to get voice clips around it, it will send back voice clips soon.



**Attention:** due to your 4G network communication with your local sim card operator, the voice clips may be have some delays after you sent the request.

## 5. Apps and Related Commands

APN Setup	Apn Setup apn#apn parameter #user name#password#
Modify IP/port	server#ip/domain#port#
Modify device id	deviceid#device id#
Restore to factory setting	1122#
Restore default password	pwrst#
Reboot	sysrst#
Set minutes interval	time#minutes number#
Set seconds interval	md#seconds number#
Require device information	INFO#