



MATERIAL HANDLING & HOISTING EQUIPMENT

LIFTING YOUR BUSINESS TO A HIGHER LEVEL

AUSTRALIAN LIFTING CENTRE PTY LTD

1300 100 120

www.austlift.com.au



Material Handling & Hoisting Equipment

| | |
|--|----|
| Load Cell | 50 |
| Chain Block (W4, W5 Series) | 51 |
| Low Headroom Chain Block (W6 Series) | 53 |
| Lever Block (L3, L4 Series) | 54 |
| Dynoblock 360°, Dock Scissor Lift | 55 |
| Sheave Wheel, Off Road Block, Sheave Block | 56 |
| Heavy Duty Snatch Block | 57 |
| Webbing Snatch Block | 57 |
| Permanent Magnetic Lifter | 58 |
| Wire Rope Winch & Instructions | 59 |
| Drum Lifter | 60 |
| Girder Clamp, Girder Trolley with Clamp | 61 |
| Plate Clamp (Universal, Horizontal) | 62 |
| Girder Trolley, Geared Trolley | 63 |
| Aussie Fetch | 64 |
| Container Ramp, Forklift Extension | 65 |
| Forklift Safe Cage | 66 |
| Foot Pad, Hand Trolley, Pallet Jack | 66 |
| W4 & W5 Chain Block Spare Parts | 67 |
| Wire Rope Winch/Hoist Spare Parts | 68 |
| Magnetic Lifter Spare Parts | 68 |
| Level Block Spare Parts | 69 |
| Snatch Block & Sheave Block Spare Parts | 71 |
| Plate Clamps Spare Parts | 72 |
| Girder Trolley with Clamp Spare Parts | 74 |





Material Handling & Hoisting Equipment

Austlift material handling and hoisting equipment are all tested in accordance and meet the relevant Australian Standard for each product.

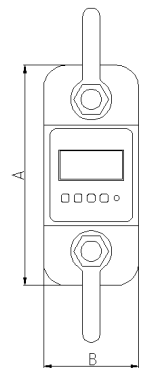
With years of extensive knowledge and years of experience in this sector Austlift products continue to develop and new ranges are becoming available as technology improves.



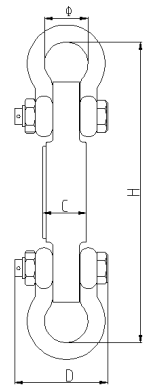
Load Cell

Austlift shackle link load cells are used for measuring the accurate weight of an object to be lifted or tensioned. Mainly used for the crane, rigging industry, test laboratories and also research and development facilities.

- Robust construction and large digital display with back light feature.
- Capacities available from 1t to 200t with accuracy of 0.1%.
- Have a reading of 200-300 times per second.
- Capable of measuring loads in pounds, tonnes and kilogram units.
- Battery operated with low battery and overload warning feature.
- All load cells come with two shackles and remote in heavy duty carry case.



| WLL (T) | PRODUCT CODE | UNIT Wt. (kg) | Wt. WITH SHACKLE (Kg) | Min. WEIGHT (kg) | TOTAL DISPLAY COUNTS (N) |
|---------|--------------|---------------|-----------------------|------------------|--------------------------|
| 1 | 160001 | 1.6 | 3.1 | 10 | 2000 |
| 2 | 160002 | 1.7 | 3.2 | 20 | 2000 |
| 3 | 160003 | 2.1 | 4.6 | 20 | 3000 |
| 5 | 160005 | 2.7 | 6.3 | 40 | 2500 |
| 10 | 160010 | 10.4 | 24.8 | 100 | 2000 |
| 20 | 160020 | 17.8 | 48.6 | 200 | 2000 |
| 30 | 160030 | 25 | 87 | 200 | 3000 |
| 50 | 160050 | 39 | 128 | 400 | 2500 |
| 100 | 160100 | 81 | 321 | 1000 | 2000 |
| 200 | 160200 | 210 | 776 | 2000 | 2000 |



Material Handling Products

| WLL (T) | PRODUCT CODE | DIVISION (kg) | DIMENSION | | | | | | MATERIAL |
|---------|--------------|---------------|-----------|-----|-----|-----|-----|------|-------------|
| | | | A | B | C | D | Ø | H | |
| 1 | 160001 | 0.5 | 245 | 112 | 37 | 190 | 43 | 335 | Aluminium |
| 2 | 160002 | 1 | 245 | 116 | 37 | 190 | 43 | 335 | Aluminium |
| 3 | 160003 | 1 | 260 | 123 | 37 | 195 | 51 | 365 | Aluminium |
| 5 | 160005 | 2 | 285 | 123 | 57 | 210 | 58 | 405 | Aluminium |
| 10 | 160010 | 5 | 320 | 120 | 57 | 230 | 92 | 535 | Alloy Steel |
| 20 | 160020 | 10 | 420 | 128 | 74 | 260 | 127 | 660 | Alloy Steel |
| 30 | 160030 | 10 | 420 | 138 | 82 | 280 | 146 | 740 | Alloy Steel |
| 50 | 160050 | 20 | 465 | 150 | 104 | 305 | 184 | 930 | Alloy Steel |
| 100 | 160100 | 50 | 570 | 190 | 132 | 366 | 229 | 1230 | Alloy Steel |
| 200 | 160200 | 100 | 725 | 265 | 183 | 440 | 280 | 1380 | Alloy Steel |

WARNING

The remote control is not recommended for use in explosive environments. Load cells should not be exposed in heavy moisture conditions for long periods. Aluminium load cell units are not suitable to be used in mine sites.



Chain Block (W4 Series)

Austlift industrial grade W4 series manually operated chain blocks are used for general hoisting operation such as mining, construction, industrial lifting and domestic applications. Other colors and height of lift available upon request. Black color available for 110500, 1T 10M chain block.

- Standard height of lift is 3M, 6M and 12M. Other height of lift available upon request.
- Manufactured for ease of operation, and light weight in design.
- Robust, durable and compact in construction.
- All blocks come with ball bearing swivel hook.
- Individually serial numbered with test certificate and instruction manual supplied.

Chain Block (W5 Series, with overload protection)

Austlift industrial grade W5 series manually operated chain blocks with overload protection are used for general hoisting operation such as mining, construction, industrial lifting and domestic applications. The overload protection is an added feature on these chain blocks protecting users and the unit itself. Other colors and height of lift available upon request.

- Standard height of lift is 3M and 6M. Other height of lift available upon request.
- Manufactured for ease of operation, and light weight in design.
- Robust, durable and compact in construction.
- All blocks come with ball bearing swivel hook.
- Individually serial numbered with test certificate and instruction manual supplied.
- Overload protection for added safety.

AS/NZS
1418.2

Certified

Instruction
Manual

WLL From
250kg~20t

**30% less hand pulling
power required**

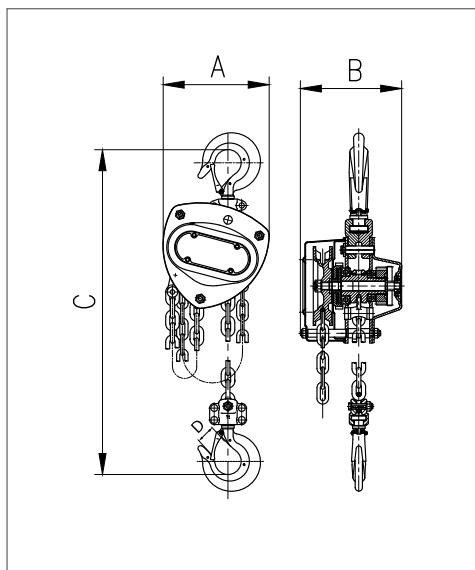


| WLL (T) | W4 CHAIN BLOCK | | | W5 CHAIN BLOCK | | TEST LOAD (T) | PULLING EFFORT (N) | DIMENSIONS (mm) | | | |
|------------|----------------|--------|--------|----------------|--------|------------------|-----------------------|-----------------|-----|---------|----|
| | 3M | 6M | 12M | 3M | 6M | | | A | B | C (Min) | D |
| 0.25 | 110002 | - | - | - | - | 0.375 | 187 | 120 | 115 | 280 | 21 |
| 0.5 | 110005 | 110505 | - | 112005 | - | 0.75 | 224 | 148 | 133 | 346 | 28 |
| 1 | 110010 | 110510 | 110710 | 112010 | 112110 | 1.5 | 281 | 173 | 150 | 376 | 32 |
| 1.5 | 110015 | 110515 | - | 112015 | 112115 | 2.25 | 290 | 196 | 173 | 442 | 38 |
| 2 | 110020 | 110520 | 110720 | 112020 | 112120 | 3 | 328 | 211 | 176 | 470 | 40 |
| 3 | 110025 | 110525 | - | 112025 | 112125 | 4.5 | 307 | 230 | 174 | 560 | 38 |
| 5 | 110030 | 110530 | 110730 | 112030 | 112130 | 7.5 | 332 | 279 | 201 | 688 | 50 |
| 10 | 110035 | 110535 | 110735 | - | - | 12.5 | 342 | 463 | 201 | 765 | 64 |
| 15 | - | 110540 | - | - | - | 18.75 | 400 | 730 | 189 | 1090 | 85 |
| 20 | 110045 | 110542 | - | - | - | 25 | 435 | 860 | 169 | 1170 | 85 |

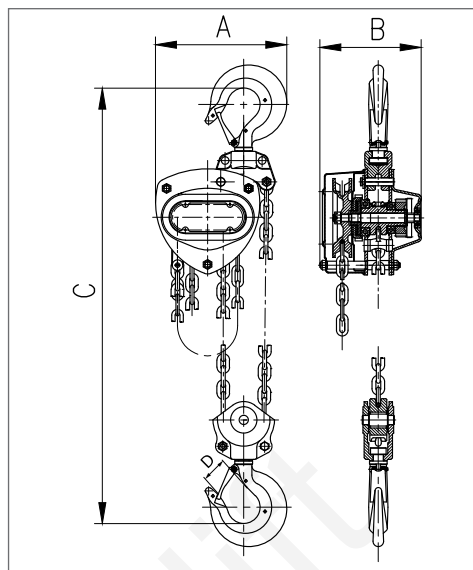
| WLL (T) | W4 CHAIN BLOCK | | | W5 CHAIN BLOCK | | UNIT Wt. (kg) | STD. LIFT (M) | LOAD CHAIN | | NO. OF CHAIN FALLS | EXTRA WEIGHT/M EXTRA LIFT (kg) |
|------------|----------------|--------|--------|----------------|--------|---------------------|---------------------|--------------|----------|--------------------------|--------------------------------------|
| | 3M | 6M | 12M | 3M | 6M | | | SIZE (mm) | CODE | | |
| 0.25 | 110002 | - | - | - | - | 7.5 | 2.5 | 4 | - | 1 | 1.5 |
| 0.5 | 110005 | 110505 | - | 112005 | - | 9.3 | 2.5 | 5 | 003705SP | 1 | 1.6 |
| 1 | 110010 | 110510 | 110710 | 112010 | 112110 | 12 | 2.5 | 6 | 003706SP | 1 | 1.8 |
| 1.5 | 110015 | 110515 | - | 112015 | 112115 | 17 | 2.5 | 7.1 | 003707SP | 1 | 2.1 |
| 2 | 110020 | 110520 | 110720 | 112020 | 112120 | 19.7 | 2.5 | 8 | 003708SP | 1 | 2.4 |
| 3 | 110025 | 110525 | - | 112025 | 112125 | 29 | 3 | 7.1 | 003707SP | 2 | 3.1 |
| 5 | 110030 | 110530 | 110730 | 112030 | 112130 | 42.5 | 3 | 9 | 003709SP | 2 | 4.6 |
| 10 | 110035 | 110535 | 110735 | - | - | 73.6 | 3 | 10 | 003710SP | 4 | 9.8 |
| 15 | - | 110540 | - | - | - | 155 | 3 | 10 | 003710SP | 6 | 14.1 |
| 20 | 110045 | 110542 | - | - | - | 186.2 | 3 | 10 | 003710SP | 8 | 19.6 |

Refer to Page 67 for chain block spare parts information.

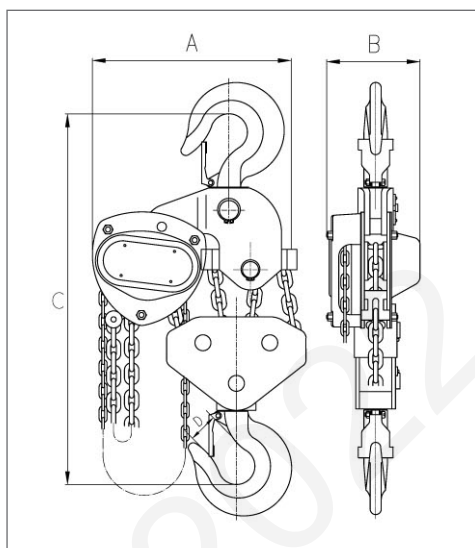
Chain Block (W4 & W5 Series)



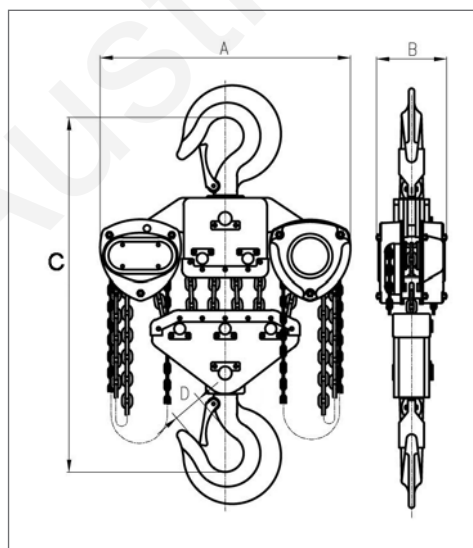
WLL: 0.25T, 0.5T, 1T, 1.5T, 2T



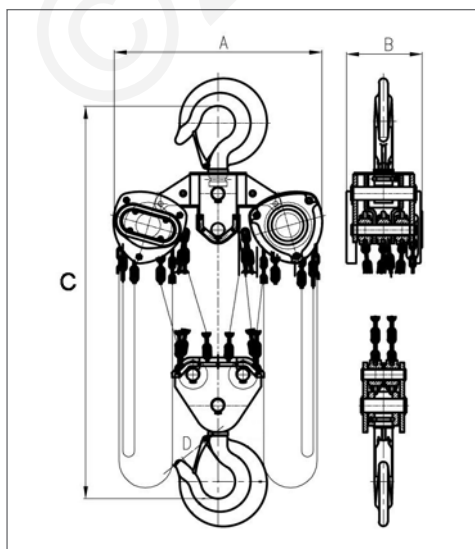
WLL: 3T, 5T



WLL: 10T



WLL: 15T



WLL: 20T

Suitable Hand Chain Sizes

| 003002SP HAND CHAIN SIZES | |
|---------------------------|--------|
| Inside Length | 23.6mm |
| Outside Length | 33.6mm |
| Inside Width | 7.5mm |
| Outside Width | 17.5mm |

Low Headroom Chain Block (w6 Series)

Built around the quality chain block hoist with headrooms as low as 4.5 inches, it is ideal for demanding industrial lifting applications where space is extra tight.

- Ultra low-profile lifting & maximum hook travel.
- Permanently attached hand geared trolley.
- Heavy-duty wheels & steel side plates.
- Maintenance-free sealed trolley bearings.
- Adjustable for tapered or flat flanged beams.



OPERATION

- Hand chain operated.
- Reduced operator fatigue through efficient drive train.

OPERATING CONDITIONS

- Recommended for -20°C to +60 °C.

HOOK

- Forged, heat-treated, opens gradually when overloaded.
- Self-closing heavy-duty hook latch.

BEARINGS

- Maintenance-free sealed bearings increase reliability and reduce pull force required to lift loads

HAND CHAIN

- High-quality steel.

LOAD CHAIN

- Heat-treated.
- Low-weight manganese alloy steel.
- High-impact steel chain guide.
- Standard Lift: 3M.

BRAKE

- Double pawl springs for extremely reliable operation and instant brake activation enclosed to protect from dust, rain and dirt.

GEARS

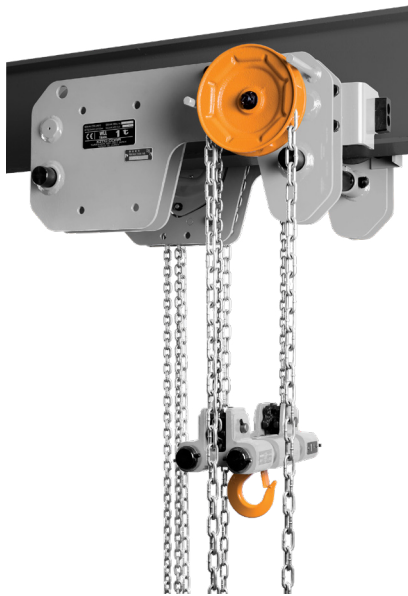
- Double reduction gearing requiring very low effort to operate.
- Induction heat-treated and case-hardened enclosed to protect from dust and water.

BODY

- Durable all-steel construction.
- Rugged gear case and hand wheel cover.
- Compact design for low headroom and lightweight portability.

OPTIONS

- Chain bag to keep chain clean and out of the way.
- Corrosion resistant chain for tough environments.
- Custom lift chain lengths to suit your requirements.



STANDARDS

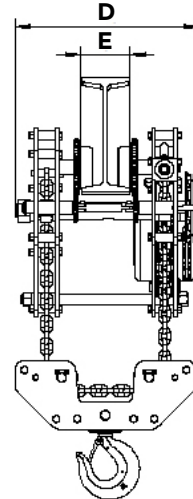
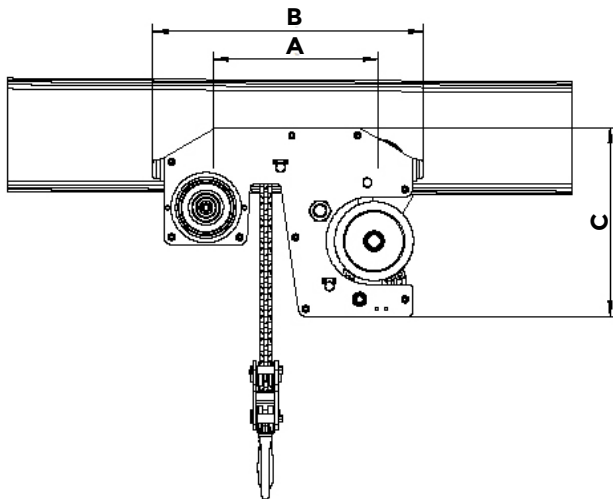
- Conforms to 1418.2 standards.
- At rated capacity, load-bearing parts are only stressed to 25% of their limit.

CAPACITY

- 1 to 10 metric tonnes.

LOW HEADROOM FEATURES

- Headroom as low as 4.5".
- Built-in trolley with cast wheels, sealed bearings and steel side plates for heavy-duty applications.



| LC (T) | CODE | SPECIFICATIONS | | | | | | | | DIMENSIONS (mm) | | | | |
|--------|--------|----------------|----------------------|---------------|--------------------|-----------------------|--------------------|--------------------------------|------------------|-----------------|-----|-----|-----|-----|
| | | Std. LIFT (M) | LOAD CHAIN SIZE (mm) | TEST LOAD (N) | PULLING EFFORT (N) | MINIMUM HEADROOM (mm) | I-BEAM WIDTH (mm)* | EXTRA WEIGHT/M EXTRA LIFT (kg) | BODY WEIGHT (kg) | A | B | C | D | E |
| 1 | 112316 | 3 | 6 x 18 | 1250 | 305 | 325 | 128 | 2.7 | 61 | 190 | 407 | 295 | 438 | 128 |
| 2 | 112326 | 3 | 6 x 18 | 2500 | 340 | 325 | 128 | 3.5 | 95 | 360 | 471 | 295 | 438 | 128 |
| 3 | 112336 | 3 | 8 x 24 | 3750 | 350 | 325 | 128 | 4.6 | 141 | 360 | 552 | 410 | 438 | 128 |
| 5 | 112358 | 3 | 10 x 30 | 6250 | 370 | 300 | 128 | 6.2 | 252 | 420 | 641 | 490 | 490 | 128 |
| 10 | 112399 | 3 | 10 x 30 | 12500 | 380 | 320 | 128 | 10.5 | 320 | 795 | 693 | 500 | 500 | 128 |

* I-beam width can be made to order

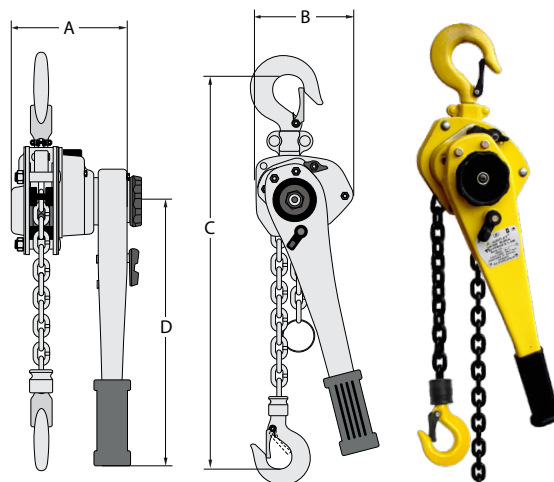
Lever Block (L-3 & L-4 Series)

Austlift L-3 & L-4 series lever blocks are used for general hoisting in the mining, construction, industrial and domestic situations. Commonly used for short lifts and pulling applications.

- Standard height of lift 1.5M and 3M except for 250kg which has 1M lift. Other lift height available upon request.
- Robust, durable, portable and compact in construction.
- All lever blocks come with ball bearing swivel hook.
- The L-4 series is specially designed with overload protection.
- Spare parts available refer to page 69.

* Please check operation manual for more details.

* Longer chain lengths are available upon request.



| CHAIN SIZE (mm) | CODE | LIFT LENGTH (M) | WLL (T) | TEST LOAD (T) | EFFECTS REQUIRED AT CAPACITY (N) | NT. (kg) | NO. OF CHAIN FALLS | DIMENSION (mm) | | | |
|-----------------|--------|-----------------|---------|---------------|----------------------------------|----------|--------------------|----------------|-----|--------------|--------|
| | | | | | | | | HEAD ROOM | | HOOK TO HOOK | HANDLE |
| | | | | | | | | A | B | | |
| 4 | 121002 | 1 | 0.25 | 0.38 | 217 | 1.85 | 1 | 92 | 75 | 205 | 153 |
| 5 | 121005 | 1.5 | 0.5 | 0.75 | 303 | 3.5 | 1 | 110 | 82 | 260 | 251 |
| | 121305 | 3 | | | | | | | | | |
| 6 | 121010 | 1.5 | 0.8 | 1.2 | 140 | 7.0 | 1 | 152 | 128 | 295 | 256 |
| | 121310 | 3 | | | | | | | | | |
| 6 | 121015 | 1.5 | 1 | 1.5 | 185 | 7.2 | 1 | 152 | 128 | 295 | 256 |
| | 121315 | 3 | | | | | | | | | |
| 7.1 | 121020 | 1.5 | 1.6 | 2.4 | 234 | 11 | 1 | 175 | 148 | 335 | 368 |
| | 121320 | 3 | | | | | | | | | |
| | 121620 | 6 | | | | | | | | | |
| 10 | 121025 | 1.5 | 3.2 | 4.8 | 363 | 20 | 1 | 195 | 181 | 450 | 368 |
| | 121325 | 3 | | | | | | | | | |
| | 121625 | 6 | | | | | | | | | |
| 10 | 121030 | 1.5 | 6.3 | 9.45 | 370 | 28 | 2 | 195 | 232 | 542 | 368 |
| | 121330 | 3 | | | | | | | | | |
| 10 | 121035 | 1.5 | 9 | 13.5 | 375 | 43 | 3 | 366 | 195 | 645 | 368 |
| | 121335 | 3 | | | | | | | | | |

L-4 SERIES (SPECIALLY DESIGNED WITH OVERLOAD PROTECTION)

| CHAIN SIZE (mm) | CODE | LIFT LENGTH (M) | WLL (T) | TEST LOAD (T) | EFFECTS REQUIRED AT CAPACITY (N) | NT. (kg) | NO. OF CHAIN FALLS | DIMENSION (mm) | | | |
|-----------------|--------|-----------------|---------|---------------|----------------------------------|----------|--------------------|----------------|-----|--------------|--------|
| | | | | | | | | HEAD ROOM | | HOOK TO HOOK | HANDLE |
| | | | | | | | | A | B | | |
| 6 | 121107 | 1.5 | 0.8 | 1.12 | 140 | 7.0 | 1 | 152 | 128 | 295 | 256 |
| | 121207 | 3 | | | | | | | | | |
| 6 | 121111 | 1.5 | 1 | 1.5 | 185 | 7.2 | 1 | 152 | 128 | 295 | 256 |
| | 121211 | 3 | | | | | | | | | |
| 7.1 | 121115 | 1.5 | 1.6 | 2.4 | 234 | 11 | 1 | 175 | 148 | 335 | 368 |
| | 121215 | 3 | | | | | | | | | |
| 10 | 121130 | 1.5 | 3.2 | 4.8 | 363 | 20 | 1 | 195 | 181 | 450 | 368 |
| | 121230 | 3 | | | | | | | | | |
| 10 | 121160 | 1.5 | 6.3 | 9.45 | 370 | 28 | 2 | 195 | 232 | 542 | 368 |
| | 121260 | 3 | | | | | | | | | |
| 10 | 121190 | 1.5 | 9 | 13.5 | 375 | 43 | 3 | 366 | 195 | 645 | 368 |
| | 121290 | 3 | | | | | | | | | |

Refer to Page 69 for lever block spare parts information.



360° operation

Dynoblock 360° **NEW**

With a compacted design, enclosed body and aluminium construction, the Austlift Dynoblock 360° is very light weight and easy to carry. The Austlift Dynoblock 360° can be used in the home, factory, field construction, agriculture, warehouse and for small equipment installation purposes. It is also widely used in the chemical and marine industries where anti-corrosion equipment is required.

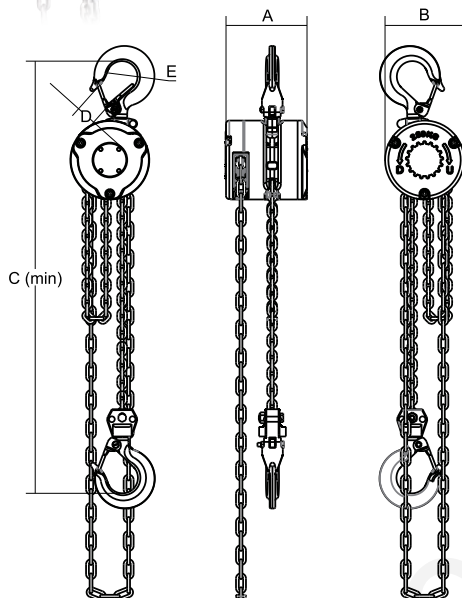
- The unit allows the user to position themselves at any angle around the unit (360°).
- More than 50% lighter than standard chain blocks.
- Double pawl brake system for increased safety.
- Heat-treated flexible hooks if overloaded.
- Galvanised load chain and hand chain for anti-corrosion.
- Water-resistant.

AS/NZS
1418.2

Certified

Instruction
Manual

WLL From
0.25-1t



| CODE | WLL (T) | NW. (kg) | LIFT HEIGHT (M) | TEST LOAD (kN) | PULLING EFFORT (N) | CHAIN SIZE (mm) | NO. OF CHAIN FALLS |
|--------|---------------------------------|-----------------|-----------------|----------------|--------------------|-----------------|--------------------|
| 117025 | 0.25 | 2.58 | 2.5 | 3.75 | 160 | 3.2 | 1 |
| 117050 | 0.5 | 3.96 | 2.5 | 7.5 | 200 | 4 | 1 |
| 117100 | 1.0 | 9.5 | 2.5 | 15 | 300 | 6 | 1 |
| CODE | ADDED LIFT HEIGHT WEIGHT/M (kg) | DIMENSIONS (mm) | | | | | |
| | | A | B | C (min) | D | E | |
| 117025 | 0.62 | 88 | 84 | 245 | 21 | 32 | |
| 117050 | 0.75 | 101 | 104 | 285 | 22 | 35 | |
| 117100 | 1.6 | 138 | 140 | 370 | 27 | 38 | |



Dock Scissor Lift **NEW**

The Austlift hydraulic scissor lift will be customised to suit individual workplace requirements that's designed to maximise efficiency and minimise loading time. The lifts can be designed with different table sizes, lifting heights and other safety features that adheres to AS 1418.7.

- **Made to order ONLY.**
- Capacities available from 0.5T to 50T.
- Platform, turntable, control, safety features list available.
- Multiple Descent protection options.
- Designed to AS/NZS ISO 8402.
- Conformed to AS/NZS 1418.7.

AS/NZS
1418.7

Certified

Instruction
Manual

WLL From
0.5-50t

Sheave Wheel

Austlift sheave wheels are available to replace worn/damaged wheels and protect your manila and wire ropes from damage.

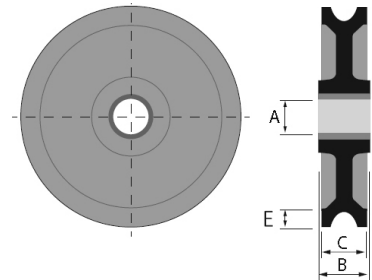
| DIA. (mm) | CODE | | WLL (T) | ROPE (mm) | Wt. (kg) | DIMENSION (mm) | | | |
|--------------|--------|---------|------------|--------------|-------------|----------------|------|------|------|
| | | | | | | A | B | C | E |
| 63 | Manila | 070063M | 0.28 | 10 | 0.28 | 12.5 | 20.5 | 19.5 | 3.2 |
| | Wire | 070063W | 0.28 | 5 | 0.28 | 12.5 | 20.5 | 19.5 | 4.8 |
| 75 | Manila | 070075M | 0.32 | 12 | 0.32 | 12.5 | 20.5 | 19.5 | 4.8 |
| | Wire | 070075W | 0.32 | 6 | 0.32 | 12.5 | 20.5 | 19.5 | 6.4 |
| 100 | Manila | 070100M | 0.77 | 16 | 0.77 | 19 | 24.5 | 23 | 6.4 |
| | Wire | 070100W | 0.77 | 8 | 0.77 | 19 | 24.5 | 23 | 8 |
| 125 | Manila | 070125M | 1.4 | 20 | 1.4 | 22 | 29.5 | 27 | 7.1 |
| | Wire | 070125W | 1.4 | 10 | 1.4 | 22 | 29.5 | 27 | 11 |
| 150 | Manila | 070150M | 2.4 | 24 | 2.4 | 25 | 32 | 30 | 8 |
| | Wire | 070150W | 2.4 | 12 | 2.4 | 25 | 32 | 30 | 12.7 |
| 200 | Manila | 070200M | 6.61 | 32 | 6.6 | 35 | 46 | 44 | 11 |
| | Wire | 070200W | 6.61 | 16 | 6.6 | 35 | 46 | 44 | 16 |



Manila Rope Sheaves



Wire Rope Sheaves



Off Road Block (Comes with Vinyl Bag)

Austlift off road blocks are designed with high grade cast 125mm iron sheaves and fitted with 2 heavy duty steel cover plates. It can be used in most off-road vehicle recovery situations and suitable for use with hand or power operated winches with a rope diameter of 11mm.

- Complete with storage pouch.
- Minimum breaking strength 8,000kg
- Not to be used for lifting.

| CODE | SHEAVE SIZE | WIRE ROPE SIZE | MBS (kg) |
|--------|-------------|----------------|----------|
| 204395 | 125mm | 11mm | 8000 |



Material Handling Products

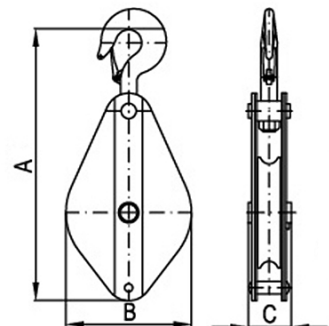
Light Duty Sheave Block / Pulley (Hook Type, Hand Operated)

Austlift manually operated sheave blocks are used for general hoisting use such as shipping, mining, general engineering, agriculture and domestic applications.

- Manufactured for ease of operation, lightweight durable and compact design.
- Available in fibre rope and wire rope sheave blocks with 75mm to 150mm sheave diameters also fitted with a bronze bush.
- Test certificate supplied.

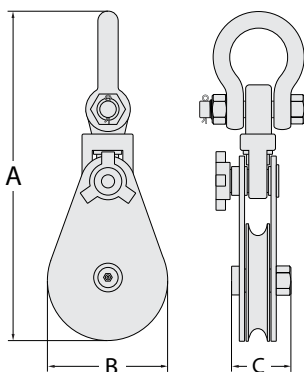


| DIA. (mm) | FIBRE ROPE | | WIRE ROPE | | WLL (T) | Wt. (kg) | DIMENSIONS (mm) | | |
|--------------|------------|------|-----------|------|------------|-------------|-----------------|-----|------|
| | CODE | ROPE | CODE | ROPE | | | A | B | C |
| 75 | 139075F | 12 | 139075W | 6 | 0.25T | 1.2 | 222.4 | 80 | 40 |
| 100 | 139100F | 16 | 139100W | 8 | 0.5T | 2.2 | 300.5 | 108 | 48.5 |
| 125 | 139125F | 20 | 139125W | 10 | 1T | 3.8 | 346 | 140 | 53.5 |
| 150 | 139150F | 24 | 139150W | 12 | 1T | 5.2 | 392 | 168 | 60 |





Ball Bearing equipped



Heavy Duty Snatch Block / Sheave Block (Swivel Shackle Type) **NEW VERSION**

Austlift manually operated snatch blocks are popular in the mining, construction, off shore rigging and heavy duty lifting applications.

- Made from hi-tensile steel body and cast steel sheave.
- Grease nipples fitted with roller bearings (2-50T).
- Blocks come with swivel bow shackle.
- Drop forged, heat treated swivel shackle.
- Spec sheet available on the website.

AS/NZS
2089

Certified

MBS
x5_{WLL}

High
Tensile
Steel

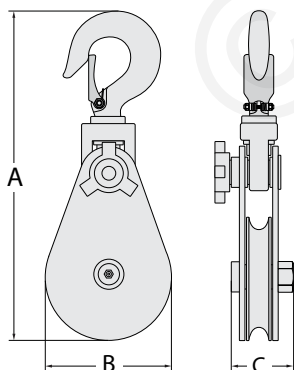
WLL From
2-50t

Spec Sheet

| WLL (T) | CODE | SHEAVE DIA (mm) | WIRE ROPE DIA (mm) | UNIT WEIGHT (kg) | DIMENSIONS (mm) | | |
|------------|--------|-----------------------|--------------------------|------------------------|-----------------|-----|-----|
| | | | | | A | B | C |
| 2 | 140102 | 75 | 8-9 | 4 | 286 | 82 | 70 |
| 4 | 140103 | 115 | 10-13 | 6.1 | 345 | 120 | 70 |
| 4 | 140104 | 152 | 10-13 | 13.8 | 400 | 160 | 70 |
| 6 | 140106 | 152 | 13-16 | 15 | 480 | 160 | 94 |
| 8 | 140108 | 203 | 16-18 | 16 | 530 | 210 | 93 |
| 10 | 140110 | 254 | 18-20 | 37.5 | 680 | 260 | 115 |
| 12 | 140112 | 305 | 20-22 | 56 | 767 | 310 | 133 |
| 15 | 140115 | 305 | 24-26 | 65 | 788 | 310 | 133 |
| 22 | 140122 | 355 | 28-32 | 90 | 952 | 365 | 140 |
| 30 | 140130 | 510 | 32-36 | 210 | 1256 | 514 | 162 |
| 50 | 140150 | 610 | 44-50 | 418 | 1525 | 625 | 240 |



Ball Bearing equipped



Heavy Duty Snatch Block / Sheave Block (Swivel Hook Type)

Austlift manually operated snatch blocks are popular in the mining, construction, off shore rigging and heavy duty lifting applications.

- Made from hi-tensile steel body and cast steel sheave.
- Spec sheet available on the website.

AS/NZS
2089

Certified

MBS
x5_{WLL}

High
Tensile
Steel

WLL From
4-8t

Spec Sheet

| WLL (T) | CODE | SHEAVE DIA (mm) | WIRE ROPE DIA (mm) | UNIT WEIGHT (kg) | DIMENSIONS (mm) | | |
|------------|--------|-----------------------|-----------------------|------------------------|-----------------|-----|----|
| | | | | | A | B | C |
| 4 | 140504 | 152 | 10-13 | 14 | 430 | 160 | 70 |
| 8 | 140508 | 203 | 16-18 | 16.5 | 550 | 210 | 93 |

Steel Wire Rope References:

- 6x25Fi+IWRC or 6x36S+IWRC 1770 wire rope is recommended.
- Diameter of the rope can be reduced by using higher tensile rope.
- Check wire rope MBS and load rating of equipment before operation.

Webbing Snatch Block

Austlift Webbing Snatch Blocks are specially designed for webbing assembly.

| CODE | WLL (kg) | SHEAVE DIA (mm) | WEB DIA. (mm) | UNIT WEIGHT (kg) |
|--------|----------|-----------------|---------------|------------------|
| 139275 | 750 | 60 | 50-56 | 2.565 |

AS/NZS
2089



Permanent Magnetic Lifter

Austlift permanent magnetic lifter have a wide variety of uses for lifting and shifting steel. This versatile lifting device has the advantage of moving material without damaging the steel surface.

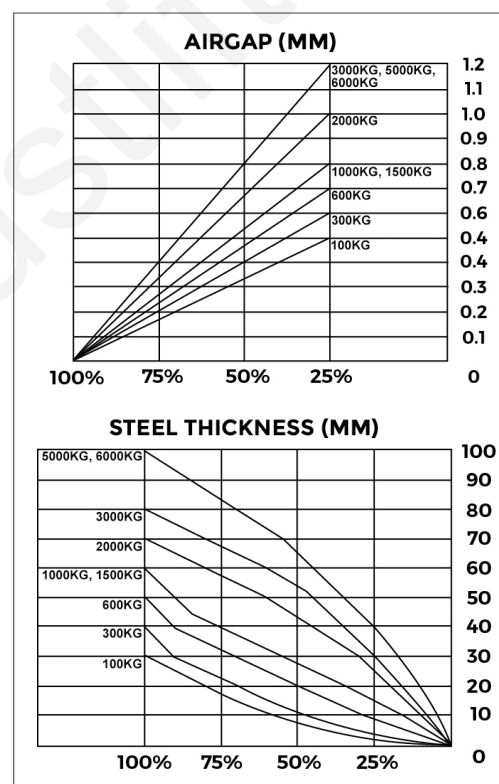
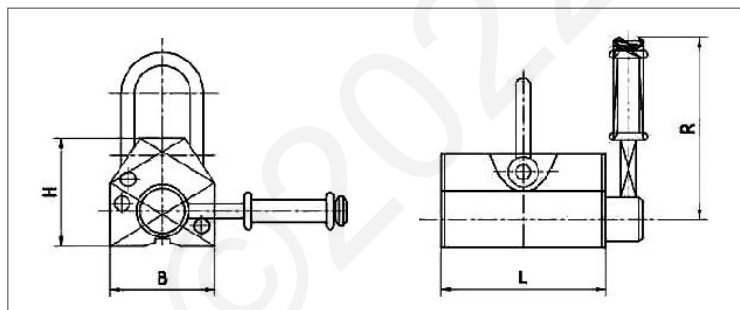
- Capacities available from 100kg to 6000kg.
- No power source required with less than 1% residual magnetism.
- Simple to operate with safety button design.
- Comes with its own test certificate.

 Refer to Page 68 for Magnetic Lifter spare parts information.



SAFETY CAPACITY DATA FOR THICKNESS

| RATED LIFTING STRENGTH (%) | PLATE THICKNESS (mm) | | | | | | | | |
|----------------------------|----------------------|------|------|------|------|------|------|------|-----|
| | 100 | 90 | 80 | 70 | 60 | 50 | 40 | 30 | 20 |
| 100kg | 100% | 100% | 100% | 100% | 100% | 100% | 100% | 100% | 80% |
| 300kg | 100% | 100% | 100% | 100% | 100% | 100% | 100% | 90% | 70% |
| 600kg | 100% | 100% | 100% | 100% | 100% | 100% | 90% | 70% | 50% |
| 1000kg | 100% | 100% | 100% | 100% | 100% | 90% | 75% | 55% | 35% |
| 1500kg | 100% | 100% | 100% | 100% | 100% | 90% | 75% | 55% | 35% |
| 2000kg | 100% | 100% | 100% | 100% | 80% | 60% | 45% | 30% | 20% |
| 3000kg | 100% | 100% | 100% | 80% | 60% | 45% | 35% | 25% | - |
| 5000kg | 100% | 85% | 70% | 55% | 45% | 35% | 25% | - | - |
| 6000kg | 100% | 85% | 70% | 55% | 45% | 35% | 25% | - | - |



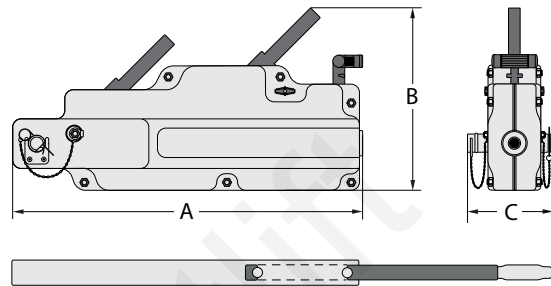
| RATED LIFTING STRENGTH (kgf) | CODE | VERTICAL / CYLINDRICAL LIFTING STRENGTH (Kgf) | MAX. PULL-OFF STRENGTH (kgf) | DIMENSIONS (mm) | | | | OPERATION TEMPERATURE (°C) | NET WEIGHT (kg) |
|------------------------------|--------|---|------------------------------|-----------------|-----|-----|-----|----------------------------|-----------------|
| | | | | L | B | H | R | | |
| 100 | 144101 | 30 | 350 | 92 | 64 | 70 | 142 | <80°C | 3 |
| 300 | 144103 | 100 | 1050 | 165 | 88 | 96 | 176 | <80°C | 10 |
| 600 | 144106 | 200 | 2100 | 216 | 118 | 120 | 219 | <80°C | 24 |
| 1000 | 144110 | 300 | 3500 | 264 | 168 | 168 | 266 | <80°C | 50 |
| 1500 | 144115 | 500 | 5250 | 353 | 172 | 168 | 380 | <80°C | 70 |
| 2000 | 144200 | 600 | 7000 | 378 | 230 | 217 | 462 | <80°C | 125 |
| 3000 | 144300 | - | 10500 | 453 | 290 | 265 | 567 | <80°C | 220 |
| 5000 | 144500 | - | 17500 | 647 | 290 | 265 | 707 | <80°C | 355 |
| 6000 | 144600 | - | 19200 | 713 | 290 | 265 | 707 | <80°C | 398 |

Wire Rope Winch / Creeper

Austlift wire rope hoist are used for lifting and hauling loads in general hoisting operation such as mining, construction, industrial lifting and domestic applications. Wire rope hoist are also ideally used for 4WD off road recovery.

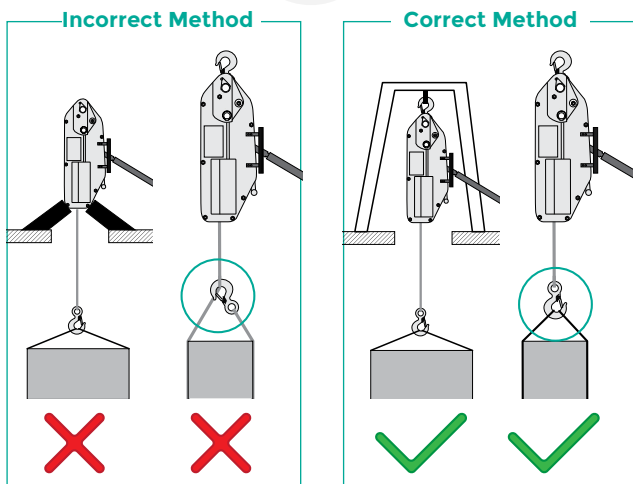
 Refer to Page 68 for Wire Rope Winch spare parts.

- Compact lightweight and robust in construction.
- Recommended for portable applications.
- Able to be operated at any angle for ease of handling.
- Hoists come with wire rope, longer lengths available.
- Hoists are individually proof tested and serial numbered.
- All hoists have spare shear pins in handle.
- All components are in box.
- Spec sheet available on the website.



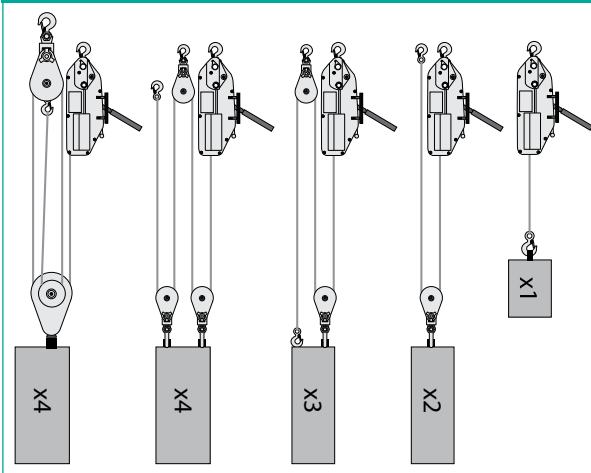
| WLL (kg) | PRODUCT | | NT. (kg) | | DIMENSIONS (mm) | | | PULLING CAPACITY (kg) | PULLING EFFORT (N) | WIRE ROPE (mm) | WIRE ROPE | WIRE ROPE LENGTH (M) | ADVANCE / PULL (mm) |
|----------|-----------|--------|------------|-----------|-----------------|-----|-----|-----------------------|--------------------|----------------|-------------|----------------------|---------------------|
| | CASE | CODE | WINCH ONLY | WIRE ROPE | A | B | C | | | | | | |
| 800 | Aluminium | 135008 | 7.5 | 8 | 426 | 236 | 64 | 1250 | 341 | 8.3 | 6x19S+IWRC | 20 | 52 |
| | Steel | 135108 | 9 | 8 | 440 | 265 | 63 | | | | | | |
| 1,600 | Aluminium | 135016 | 14.5 | 12 | 545 | 280 | 97 | 2500 | 438 | 11 | 6x25Fi+IWRC | 20 | 55 |
| | Steel | 135116 | 16.5 | 12 | 550 | 300 | 77 | | | | | | |
| 3,200 | Aluminium | 135032 | 23.5 | 24 | 660 | 325 | 116 | 5000 | 438 | 16 | 6x25Fi+IWRC | 20 | 28 |
| | Steel | 135132 | 31 | 24 | 690 | 350 | 91 | | | | | | |

Wire Rope Winch instructions



Increase the Capacity of Winches

By using multiple sheave blocks, the lifting and pulling capacity can be greatly increased. Please check the capacity of the block, the fittings & anchor points for suitability of the load.



Edge Grip Drum Lifter

Austlift drum lifters are specially designed to lift 210 litre (44 gallon) drums vertically with or without lids. Easy to use for fast lifting and repositioning of drums.



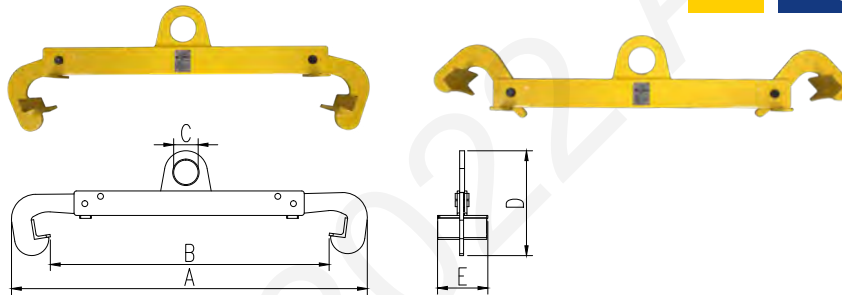
| CODE | OPENING (mm) | WLL (T) | Wt. (kg) | DIMENSIONS (mm) | | | | |
|---------|--------------|---------|----------|-----------------|-----|-----|-----|-----|
| | | | | H | h | M | S | W |
| 144000 | 0-30 | 0.6 | 6.5 | 350 | 420 | 570 | 105 | 260 |
| 144001* | 0-30 | 0.6 | 7.8 | 350 | 420 | 570 | 105 | 260 |

* Assembled with G80 10mm Master Link and 8mm Chain Connector for forklift.



Vertical Drum Lifter

Austlift vertical drum lifters are specially designed For lifting 210 litre (44 gallon) drums with closed head drums or drums with lids, which are in the vertical position. Conforms to AS/NZS 4991.



| CODE | WLL (T) | Wt. (kg) | JAW OPENING (mm) | DIMENSIONS (mm) | | | | |
|--------|---------|----------|------------------|-----------------|-----|----|-----|-----|
| | | | | A | B | C | D | E |
| 144002 | 0.5 | 4.55 | 540-600 | 725 | 570 | 50 | 200 | 100 |



Material Handling Products

Web Sling Drum Lifter

Austlift sling type drum lifters are made by 100% polyester webbing and specially designed to lift 210 litre (44 gallon) drums vertically. Easy to use for fast lifting and repositioning of drums.



| CODE | Drum Size | WLL (T) | Wt. (kg) | Fitting |
|--------|------------|---------|----------|-----------|
| 144003 | Up to 210L | 0.5 | 2.8 | Head Ring |

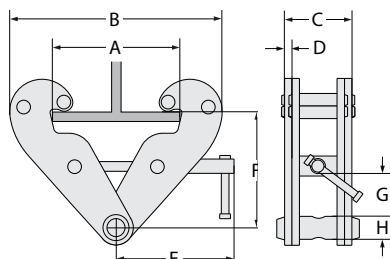


Girder Clamp



Austlift girder clamps are designed to lift steel girders and narrow steel plate or clamped on girder to utilize as a lifting point. Also available in black color in all sizes upon request.

- Can use on material hardness up to 37RC.
- Individually serial numbered with test certificates and user manual.
- Spec sheet available on the website.
- **Can ONLY be used on vertical lift.**



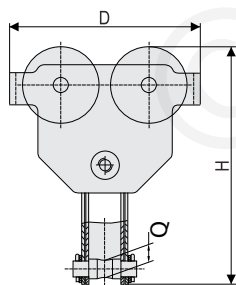
| WLL (T) | CODE | BEAM SIZE (mm) | Wt. (kg) | DIMENSIONS (mm) | | | | | | | | | |
|---------|-----------|----------------|----------|-----------------|-----|-----|-----|----|-----|-----|-----|----|----|
| | | | | A | B | | C | D | E | F | | G | H |
| | | | | max | min | max | | | | min | max | | |
| 1 | 132005(B) | 75-220 | 4.5 | 260 | 180 | 360 | 64 | 5 | 215 | 102 | 155 | 25 | 22 |
| 2 | 132010(B) | 75-220 | 5.2 | 260 | 180 | 360 | 74 | 6 | 215 | 102 | 155 | 25 | 22 |
| 3 | 132013 | 80-320 | 10 | 354 | 235 | 490 | 103 | 8 | 260 | 140 | 225 | 45 | 24 |
| 5 | 132015 | 80-320 | 11.1 | 354 | 235 | 490 | 110 | 10 | 260 | 140 | 225 | 45 | 28 |
| 10 | 132020 | 90-320 | 20 | 365 | 320 | 505 | 120 | 12 | 280 | 170 | 235 | 50 | 40 |

Girder Trolley with Clamp



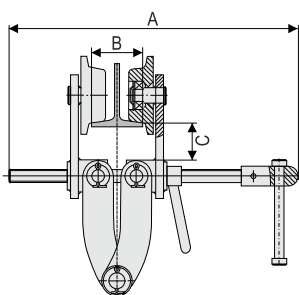
The easy installation to any beam makes it suitable for fixing to any moving hoist, pulleys and loads. It can be adjusted quickly to the beam width by turning the main spindle.

- Identification tag with serial number.



| WLL (T) | CODE | BEAM SIZE (mm) | Wt. (kg) | Min. RADIUS OF CURVE (M) | DIMENSIONS (mm) | | | | | |
|---------|--------|----------------|----------|--------------------------|-----------------|---------|----|-----|-----|----|
| | | | | | A | B | C | D | H | Q |
| 1 | 131210 | 64-203 | 10 | 1.1 | 324 | 64-203 | 26 | 174 | 217 | 20 |
| 2 | 131215 | 76-203 | 18 | 1.3 | 340 | 76-203 | 27 | 280 | 274 | 20 |
| 3 | 131220 | 76-203 | 29 | 1.4 | 345 | 76-203 | 31 | 340 | 305 | 22 |
| 5 | 131225 | 100-305 | 49 | 1.5 | 465 | 100-305 | 50 | 385 | 399 | 30 |
| 10 | 131230 | 150-305 | 106 | 1.9 | 488 | 127-305 | 60 | 470 | 462 | 39 |

Refer to Page 76 for Geared Trolley With Clamp Spare Parts information.



Universal Plate Clamp / Vertical Plate Grab

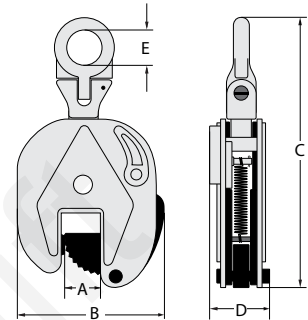
Austlift universal plate clamps are equipped with a universal hinged lifting eye, making it possible to lift loads from any given direction.

- Can be used on material hardness up to 37RC.
- Individually serial numbered with test certificates and user manual.
- Spare parts are available.
- Spec sheet available on the website.



| WLL (T) | CODE | Wt. (kg) | DIMENSION (mm) | | | | |
|---------|--------|----------|----------------|-----|-----|-----|-----|
| | | | A | B | C | D | E |
| 0.75 | 142075 | 2 | 0-15 | 105 | 218 | 51 | ø30 |
| 1.5 | 142150 | 7.4 | 0-20 | 170 | 370 | 70 | ø60 |
| 2 | 142200 | 7.8 | 0-25 | 175 | 375 | 72 | ø60 |
| 3 | 142300 | 16 | 0-30 | 195 | 418 | 98 | ø60 |
| 5 | 142500 | 23 | 0-50 | 230 | 480 | 110 | ø80 |

Refer to Page 75 for Universal Plate Clamp spare parts information.



Horizontal Plate Clamp

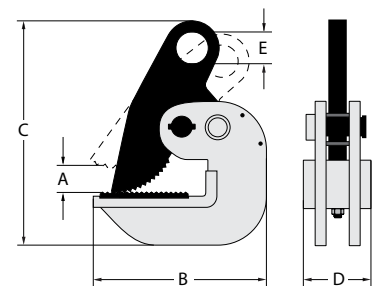
Austlift horizontal lifting clamps are used in pairs to lift and transport steel material on a flat plane configuration.

- Can be used on material hardness up to 37RC.
- Individually serial numbered comes with test certificates and user manual.
- Spare parts are available.

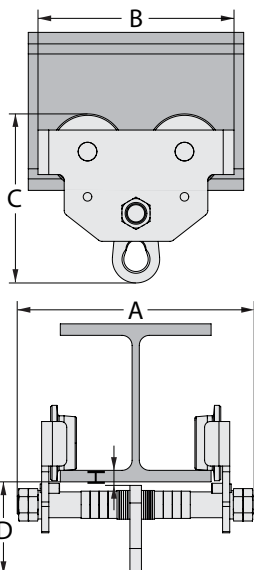


| WLL (T) | CODE | Wt. (kg) | DIMENSION (mm) | | | | |
|---------|--------|----------|----------------|-----|-----|----|-----|
| | | | A | B | C | D | E |
| 0.75 | 143075 | 3.5 | 0-25 | 125 | 175 | 51 | ø25 |
| 1 | 143100 | 4 | 0-30 | 161 | 205 | 60 | ø30 |
| 1.5 | 143150 | 4.3 | 0-30 | 161 | 205 | 60 | ø30 |
| 2 | 143200 | 7.2 | 0-40 | 175 | 245 | 65 | ø30 |
| 3 | 143300 | 8 | 0-45 | 180 | 250 | 65 | ø30 |
| 5 | 143500 | 9 | 0-55 | 185 | 260 | 70 | ø30 |

Refer to Page 74 for Horizontal Plate Clamp spare parts information.



Fitted with locking button (a safety feature)



Girdler Trolley / Push Trolley

Austlift girder trolley is moved by pushing the load lifted by the trolley, running along the flange of a monorail. A main shaft with spacers you can adjust the width of UC beam. They are widely used in factories, mines, wharves, docks, warehouses and engineering workshops for installation of equipment in places where no power supply is available.

- High quality sealed ball bearings.
- Identification tag with serial number.
- Fitted with anti-drop plates for safety. Low headroom by design.
- Suitable for I beam (UC Beam), We can change wheels of trolley for H beam (UB Beam) for additional cost.
- Spec sheet available on the website.

AS/NZS
1418.2

Certified

Proof
Tested
x2_{WLL}

Instruction
Manual

WLL From
0.5-10t

Spec Sheet

| WLL (T) | CODE | BEAM SIZE (mm) | Min. RADIUS OF CURVE (M) | Wt. (kg) | DIMENSIONS (mm) | | | | |
|------------|--------|----------------------|--------------------------------|-------------|-----------------|-----|-----|-----|----|
| | | | | | A | B | C | D | H |
| 0.5 | 131005 | 64-140 | 0.8 | 5.5 | 228 | 196 | 192 | 117 | 25 |
| 1 | 131010 | 64-203 | 0.9 | 8.9 | 306 | 236 | 211 | 120 | 19 |
| 2 | 131015 | 76-210 | 1.0 | 10.7 | 318 | 273 | 236 | 130 | 22 |
| 3 | 131020 | 100-305 | 1.2 | 24.3 | 436 | 320 | 295 | 166 | 32 |
| 5 | 131025 | 100-305 | 1.3 | 36.3 | 454 | 366 | 333 | 186 | 38 |
| 10 | 131030 | 125-305 | 2.0 | 83.3 | 486 | 456 | 421 | 250 | 35 |

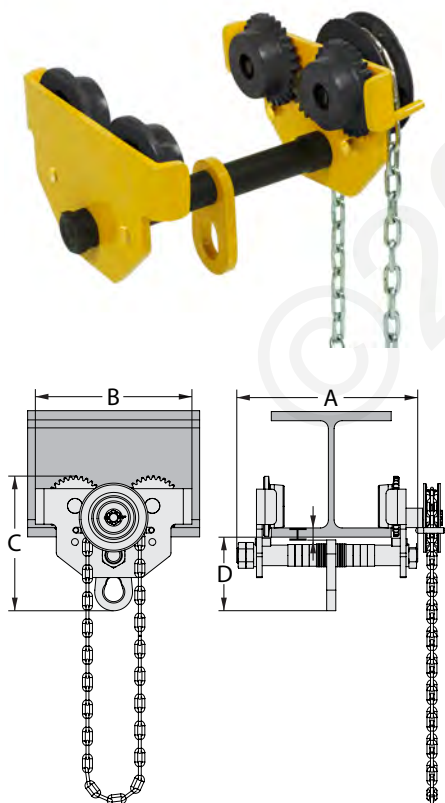
WE ARE UPDATING OUR DESIGN

Future stock are suitable for I Beam and H Beam.

Geared Trolley

The Austlift geared trolley is hand-operated by pulling the hand-chain, running on the bottom flange of monorail. With a main shaft with spacers you can adjust the width of beam. They are widely used in factories, mines, wharves, docks, warehouses and engineering workshops for installation of equipment and conveyance of goods. They are especially suitable for maintenance and repairing of equipment in places where no power supply is available.

- Standard hand chain is 3 metres however longer chain lengths are available.
- High quality sealed ball bearings.
- Identification tag with serial number.
- Fitted with anti-drop plates for safety. Low headroom by design.
- Suitable for I beam (UC Beam), We can change wheels of trolley for H beam (UB Beam) for additional cost.
- Spec sheet available on the website.



AS/NZS
1418.2

Certified

Proof
Tested
x2_{WLL}

Instruction
Manual

WLL From
1-10t

Spec Sheet

| WLL (T) | CODE | BEAM SIZE (mm) | PULLING FORCE* (N) | CHAIN LENGTH (M) | Wt. (kg) | DIMENSIONS (mm) | | | | |
|------------|--------|----------------------|--------------------------|------------------------|-------------|-----------------|-----|-----|-----|----|
| | | | | | | A | B | C | D | H |
| 1 | 131505 | 64-203 | 80 | 3 | 14 | 296 | 236 | 211 | 122 | 19 |
| 1.5-2 | 131510 | 76-210 | 140 | 3 | 16 | 305 | 273 | 236 | 130 | 22 |
| 3 | 131515 | 100-305 | 150 | 3 | 24 | 420 | 320 | 295 | 166 | 32 |
| 5 | 131520 | 100-305 | 170 | 3 | 36 | 441 | 366 | 333 | 186 | 38 |
| 10 | 131530 | 125-305 | 320 | 3 | 90 | 461 | 456 | 414 | 250 | 35 |

* Minimum Radius of Curve is same as the Girdler Trolley.

* Pulling force is measured when the trolley is in full load.

* NOTE: DO NOT USE CHAIN FROM CHAIN BLOCKS ON GEARED TROLLEYS.

WE ARE UPDATING OUR DESIGN

Future stock are suitable for I Beam and H Beam.

Aussie Fetch **NEW**

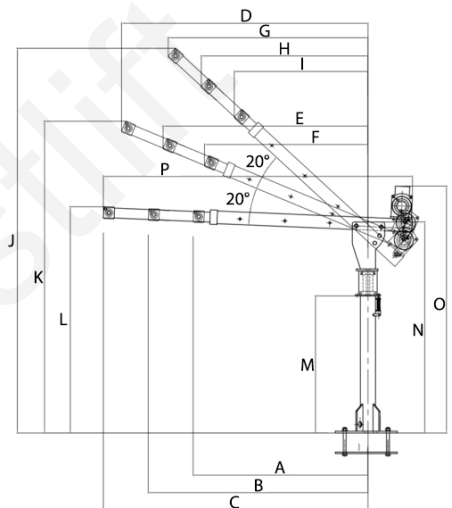
Aussie Fetch is an upgraded design of vehicle crane. Austlift uses flat web sling to replace old wire rope sling to eliminate twisting for easy to use. A new slewing stop design is for safer operating if the vehicle is parked on sloped ground. The design focus of this crane is to provide an economical, light weight lifting device to ensure safer lifting.

- Work load limit 400kg.
- Maximum arm extension: 360 degrees unlimited slowing.
- Compact design, folds away when not in use.
- It can be installed in Austlift workshop, by authorized vehicle body builder, or by owner self with competent mechanical knowledge.



| CODE | SWL (kg) | NW. (kg) | MAX LIFTING HEIGHT (mm) | MAX REACH (mm) | ROTATION |
|--------|----------|----------|-------------------------|----------------|-------------|
| 145080 | 400 | 55 | 2000 | 1470 | 360° Manual |

| DIMENSIONS (mm) | | | | | | | |
|-----------------|------|------|------|------|------|------|------|
| A | B | C | D | E | F | G | H |
| 973 | 1223 | 1472 | 1371 | 1140 | 909 | 1112 | 928 |
| I | J | K | L | M | N | O | P |
| 744 | 2133 | 1729 | 1255 | 760 | 1162 | 1370 | 1720 |



Webbing Sling



Specially designed lifting web sling. MBS: 4T.

Winch



A fully weatherproof electrical winch, 12V DC.

Lock



This lock is specially designed to keep the arm fixed at a certain angle.

Hand Control



Plug in hand controller with cord for operation at a safe distance and safe storage.

Slewing Lock

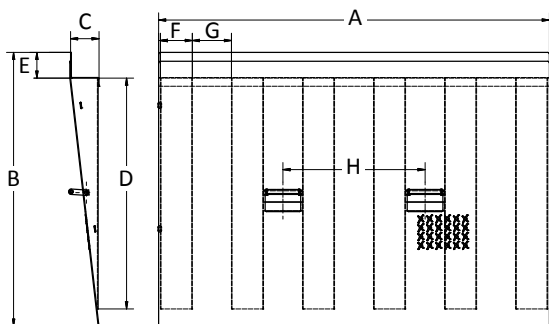


A pin lock to ensure that the crane is working at desired position and stop unwanted slewing.

Container Ramp



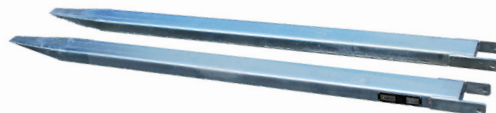
| CODE | 145000 |
|---------------|--------|
| MATERIAL | Steel |
| CAPACITY (kg) | 6500 |
| NW. (kg) | 200 |



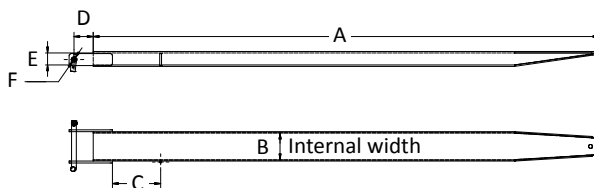
DIMENSIONS

| A (mm) | 2200 |
|--------|------|
| B (mm) | 1542 |
| C (mm) | 160 |
| D (mm) | 1300 |
| E (mm) | 145 |
| F (mm) | 180 |
| G (mm) | 220 |
| H (mm) | 800 |

Forklift Extension



| CODE | 145010 | 145015 |
|------------------|------------------|------------------|
| MATERIAL | Galvanised steel | Galvanised steel |
| MAX. FORK SIZE | 100 x 45mm | 100 x 45mm |
| SIZE (mm) | 112 x 1800 W/L | 122 x 2100 W/L |
| CAPACITY (kg) | 3000 | 3000 |
| LOAD CENTER | 600mm | 600mm |
| UNIT WEIGHT (kg) | 28.5/ea | 33.25/ea |



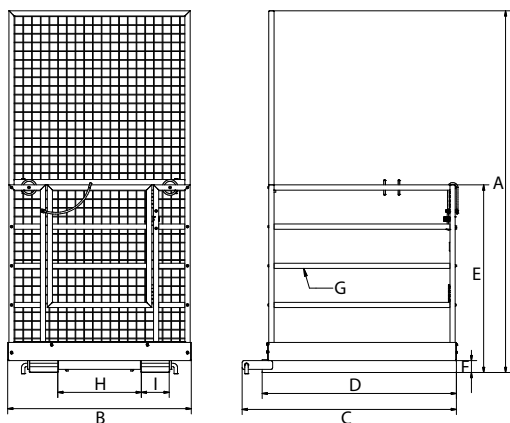
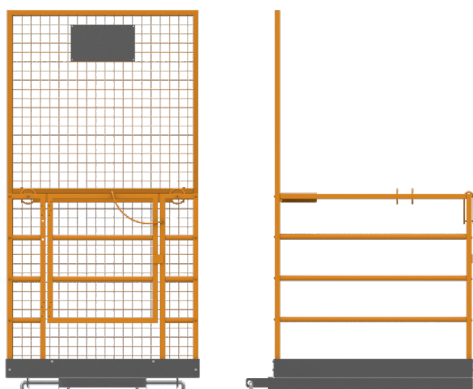
DIMENSIONS

| A (mm) | 1800 | 2100 |
|--------|------|------|
| B (mm) | 140 | 140 |
| C (mm) | 200 | 200 |
| D (mm) | 80 | 80 |
| E (mm) | 50 | 50 |
| F (mm) | 22 | 22 |

Fork Lift Safe Cage



| CODE | 145020 |
|---------------|--------|
| MATERIAL | Steel |
| CAPACITY (kg) | 250 |
| NW. (kg) | 115 |



DIMENSIONS

| | |
|--------|------|
| A (mm) | 2078 |
| B (mm) | 1054 |
| C (mm) | 1230 |
| D (mm) | 1115 |
| E (mm) | 1078 |
| F (mm) | 68 |
| G (mm) | 30 |
| H (mm) | 480 |
| I (mm) | 160 |

Foot Pad



| CODE | 145025 |
|-----------------|--|
| DESCRIPTION | Ultra high molecular weight polyethylene |
| DIMENSIONS (mm) | 500 x 500 x 60 |
| CAPACITY (t) | 25 |
| Wt. (kg) | 15 |

Pallet Jack



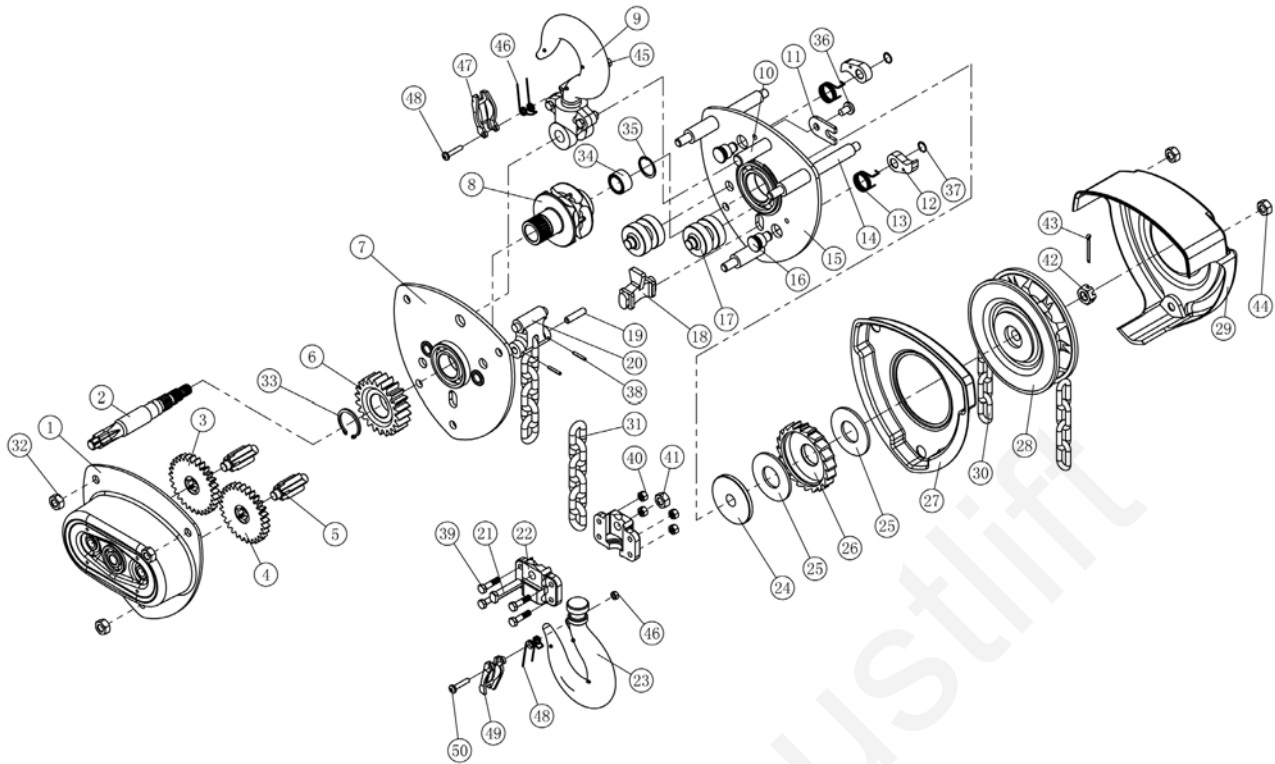
| CODE | 145050 | 145060 |
|-----------------|------------|------------|
| DIMENSIONS (mm) | 550 x 1150 | 685 x 1220 |
| SWL (kg) | 3000 | 3000 |
| Wt. (kg) | 75 | 80 |

Hand Trolley Flat



| CODE | 145090 |
|-----------------|-----------------------------------|
| DESCRIPTION | Flat bed type, 2 levels, 4 wheels |
| DIMENSIONS (mm) | 910 x 510 x 930 |
| SWL (kg) | 300 |
| Wt. (kg) | 20 |

W4 & W5 CHAIN BLOCK SPARE PARTS



| KEY | PART NAME | KEY | PART NAME | KEY | PART NAME | KEY | PART NAME |
|-----|-----------------------|-----|----------------------|-----|---------------------|-----|--------------------|
| 1 | Gear cover | 13 | Pawl spring | 25 | Friction plate | 37 | Circlip for shaft |
| 2 | Long shaft gear | 14 | Shore | 26 | Ratchet wheel | 38 | Spring pin |
| 3 | Disk gear 1st | 15 | Left side plate assy | 27 | Ratchet wheel cover | 39 | Bolt |
| 4 | Disk gear 2nd | 16 | Pawl pin | 28 | Hand chain wheel | 40 | Nut |
| 5 | Short shaft gear | 17 | Guide roller | 29 | Hand wheel cover | 41 | Nut |
| 6 | Spline gear | 18 | Stripper | 30 | Hand chain | 42 | Slotted nut |
| 7 | Right side plate assy | 19 | End anchor pin | 31 | Load chain | 43 | Split pin |
| 8 | Load chain sprocket | 20 | End anchor | 32 | Nut | 44 | Nut |
| 9 | Top hook assy | 21 | Suspension load pin | 33 | Circlip for shaft | 45 | Nut |
| 10 | Hook connector | 22 | Bottom hook frame | 34 | Needle bearing | 46 | Double coil spring |
| 11 | Positioning plate | 23 | Bottom hook assy | 35 | Circlip for hole | 47 | Safety latch |
| 12 | Pawl | 24 | Brake seat | 36 | Screw | 48 | Pin |

| W4 & W5 Chain Block Spare Parts | | | | | | | |
|---------------------------------|--------|--------|-----------|-------------|------------|------------|--------------|
| SUIT FOR | | | NO. 9 | NO. 23 | NO. 25 | NO. 30 | NO. 46+47+48 |
| WLL | 3M | 6M | Top Hook | Bottom Hook | Brake Disk | Hand Chain | Safety Latch |
| 0.5T | 110005 | 110505 | 001505SP4 | 010305SP4 | 003200SP4 | 003002SP | 003805SP4 |
| 1T | 110010 | 110510 | 001510SP4 | 010310SP4 | 003200SP4 | 003002SP | 003810SP4 |
| 1.5T | 110015 | 110515 | 001515SP4 | 010315SP4 | 003315SP4 | 003002SP | 003815SP4 |
| 2T | 110020 | 110520 | 001520SP4 | 010320SP4 | 003201SP4 | 003002SP | 003820SP4 |
| 3T | 110025 | 110525 | 001530SP4 | 010330SP4 | 003200SP4 | 003002SP | 003830SP4 |
| 5T | 110030 | 110530 | 001540SP4 | 010350SP4 | 003201SP4 | 003002SP | 003850SP4 |
| 10T | 110035 | 110535 | 001545SP4 | 010400SP4 | 003201SP4 | 003002SP | 003860SP4 |
| 15T | - | 110540 | 001550SP4 | 010450SP4 | 003205SP4 | 003002SP | - |

WIRE ROPE WINCH/HOIST SPARE PARTS



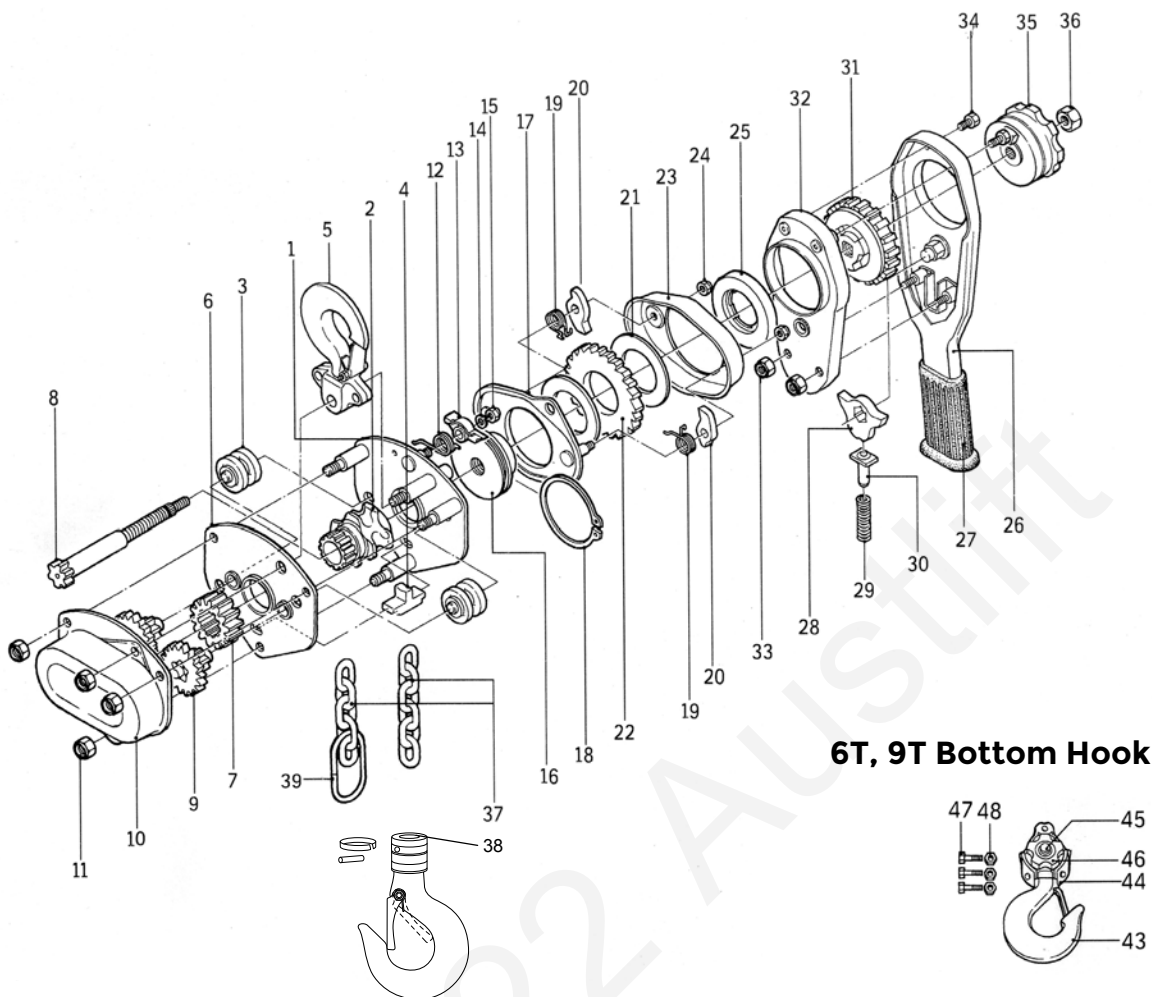
| WIRE ROPE WINCH/HOIST SPARE PARTS | | | | | | | |
|-----------------------------------|----------------|------------|--------------|------------|-------------------|------------|----------|
| WLL | Aluminium Case | Steel Case | Winch Handle | Winch Rope | Brass Shear Pin | Anchor Pin | R-Clip |
| 800kg | 135008A | 135108S | 135008H | 135008W | 003401SP (25X7mm) | 003411SP | 003421SP |
| 1600kg | 135016A | 135116S | 135016H | 135016W | 003402SP (29X7mm) | 003412SP | 003421SP |
| 3200kg | 135032A | 135132S | 135032H | 135032W | 003402SP (29X7mm) | 003413SP | 003421SP |

MAGNETIC LIFTER SPARE PARTS

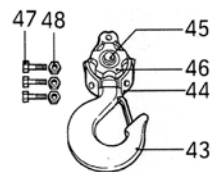


| Magnetic Lifter Spare Parts (100kg - 3000kg) | | | |
|--|--------|----------|----------|
| WLL | SUIT | HANDLE | SHACKLE |
| 100 | 144101 | 033010SP | - |
| 300 | 144103 | 033030SP | - |
| 600 | 144106 | 033060SP | - |
| 1000 | 144110 | 033100SP | 034100SP |
| 1500 | 144115 | 033150SP | 034105SP |
| 2000 | 144200 | 033200SP | - |
| 3000 | 144300 | 033300SP | - |

LEVER BLOCK SPARE PARTS



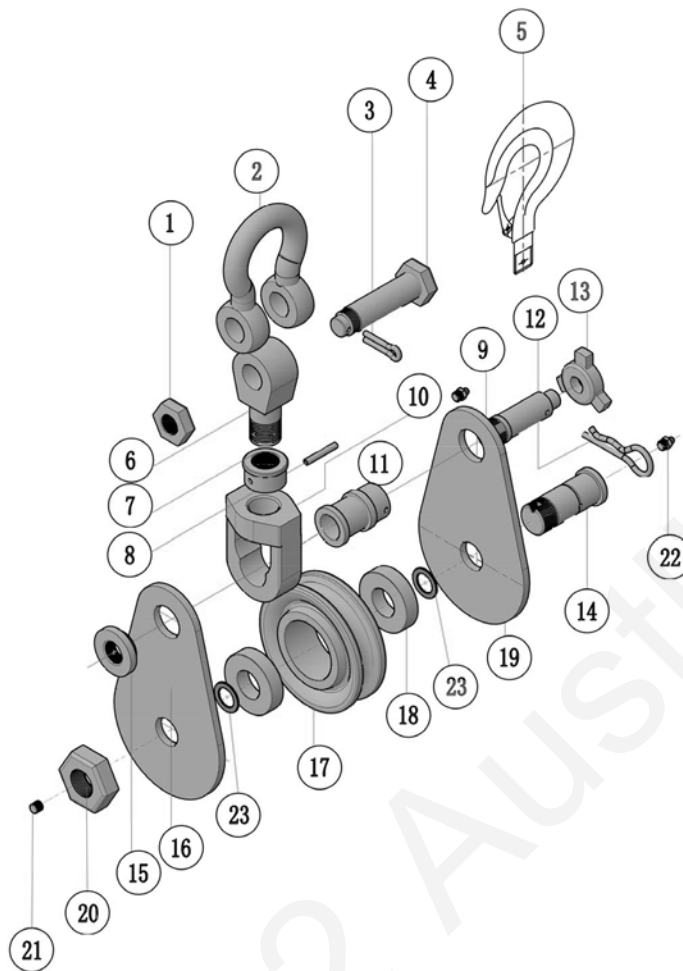
6T, 9T Bottom Hook



| KEY | PART NAME | QTY. | KEY | PART NAME | QTY. | KEY | PART NAME | QTY. |
|------------------------------------|--------------------|------|-----|---------------------|------|-----|-------------------|------|
| 1 | Side Plate1 | 1 | 14 | Washer for pawl | 1 | 27 | Grip | 1 |
| 2 | Sprocket | 1 | 15 | U-nut for pawl | 1 | 28 | Change pawl | 1 |
| 3 | Load chain guide | 2 | 16 | Hub | 1 | 29 | Pushing up spring | 1 |
| 4 | Chain stripper | 1 | 17 | Retaining plate set | 1 | 30 | Pushing up pin | 1 |
| 5 | Top hook set | 1 | 18 | Snap link for hub | 1 | 31 | Change gear | 1 |
| 6 | Side plate 2 | 1 | 19 | Brake spring | 2 | 32 | Lever cover | 1 |
| 7 | 1st gear | 1 | 20 | Brake pawl | 2 | 33 | U-nut for L.C. | 2 |
| 8 | Pinion shaft | 1 | 21 | Brake disc | 2 | 34 | Bolt for L.C. | 2 |
| 9 | 2nd gear, 3rd gear | 2 | 22 | Ratchet gear | 1 | 35 | Grip ring | 1 |
| 10 | Gear cover set | 1 | 23 | Brake cover | 1 | 36 | Pinion nut | 1 |
| 11 | Nut for gear cover | 4 | 24 | U-nut for B.C. | 2 | 37 | Loading chain | 1 |
| 12 | Retaining spring | 1 | 25 | Brake ring | 1 | 38 | Bottom hook set | 1 |
| 13 | Retaining pawl | 1 | 26 | Lever body | 1 | | | |
| 6T, 9T ON BOTTOM HOOK PARTS | | | | | | | | |
| KEY | PART NAME | QTY. | KEY | PART NAME | QTY. | KEY | PART NAME | QTY. |
| 43 | Hook | 1 | 45 | Axle | 1 | 47 | Bolt | 3 |
| 44 | Frame | 2 | 46 | Idle sheave | 1 | 48 | Nut | 3 |

| L3 LEVER BLOCK SPARE PARTS | | | | | | |
|----------------------------|----------------------------------|--|------------------------|---------------------------|----------------------------|--------------------------|
| WLL (T) | NO. 2 Sprocket | NO. 3 Load Chain Guide | NO. 4 Chain Striper | NO. 5 Top Hook Set | NO. 12 Retaining Spring | NO. 13 Retaining Pawl |
| 0.25 | - | - | - | - | - | - |
| 0.5 | - | - | - | - | - | - |
| 0.8 | 020207SP | 020307SP | 020407SP | 020507SP | 021207SP | 021307SP |
| 1 | - | - | - | 020510SP | - | - |
| 1.6 | 020215SP | 020315SP | 020415SP | 020515SP | 021215SP | 021315SP |
| 3.2 | 020230SP | 020330SP | 020430SP | 020530SP | 021230SP | 021330SP |
| 6.3 | 020260SP | 020360SP | 020460SP | 020560SP | 021260SP | 021360SP |
| 9 | - | - | - | - | - | - |
| WLL (T) | NO. 19 Brake Spring | NO. 20 Brake Pawl C/W Nut & Washer | NO. 21 Brake Disc | NO. 22 Ratchet Gear | NO. 23 Brake Cove | NO. 25 Brake Ring |
| 0.25 | - | - | - | - | - | - |
| 0.5 | - | - | 022105SP | - | - | - |
| 0.8 | 021907SP | 022007SP | 022107SP | 022207SP | 022307SP | 022507SP |
| 1 | - | - | - | - | - | - |
| 1.6 | 021915SP | 022015SP | 022107SP | 022215SP | 022315SP | 022515SP |
| 3.2 | 021930SP | 022030SP | 022130SP | 022230SP | 022330SP | 022530SP |
| 6.3 | 021960SP | 022060SP | 022130SP | 022260SP | 022360SP | 022560SP |
| 9 | - | - | 022190SP | - | - | - |
| WLL (T) | NO. 26 Lever Body | NO. 27 Lever Body Grip | NO. 28 Change Pawl | NO. 29 Push Up Spring | NO. 30 Push Up Pin | NO. 32 Lever Cover |
| 0.25 | - | - | - | - | - | - |
| 0.5 | 022605SP | - | - | - | - | - |
| 0.8 | 022607SP | 022707SP | 022807SP | 022907SP | 023007SP | 023207SP |
| 1 | - | - | - | - | - | - |
| 1.6 | 022615SP | 022715SP | 022815SP | 022915SP | 023015SP | 023215SP |
| 3.2 | 022630SP | 022730SP | 022830SP | 022930SP | 023030SP | 023230SP |
| 6.3 | - | 022760SP | 022860SP | 022960SP | 023060SP | 023260SP |
| 9 | - | - | - | - | - | - |
| WLL (T) | NO. 35 Grip Ring | NO. 36 Pinion Nut | NO. 37 Load Chain | NO. 38 Bottom Hook Set | Pin for Load Chain | Hook safety Latch |
| 0.5 | - | - | 003705SP | - | - | 024105SP |
| 0.8 | 023507SP | 023607SP | 003706SP | 023807SP | 024007SP | 024107SP |
| 1 | - | - | 003706SP | 023810SP | 024010SP | 024110SP |
| 1.6 | 023515SP | 023615SP | 003707SP | 023815SP | 024015SP | 024115SP |
| 2 | - | - | - | - | - | 024120SP |
| 3.2 | 023530SP | 023630SP | 003710SP | 023830SP | 024030SP | 024130SP |
| 6.3 | 023560SP | 023660SP | 003710SP | 023860SP | 024060SP | 024160SP |
| 9 | - | - | 003710SP | - | - | 024190SP |
| WLL (T) | NO. 47 + 48 Hook Bolt/nut Set | | Up-Down Change Lever | | | |
| 0.25 | - | | - | | | |
| 0.5 | - | | - | | | |
| 0.8 | 024707SP | | 024907SP | | | |
| 1 | 024710SP | | - | | | |
| 1.6 | 024715SP | | 024915SP | | | |
| 3.2 | 024730SP | | 024930SP | | | |
| 6.3 | 024760SP | | 024960SP | | | |
| 9 | - | | - | | | |

SNATCH BLOCK SPARE PARTS







HEAVY DUTY SNATCH BLOCK SPARE PARTS

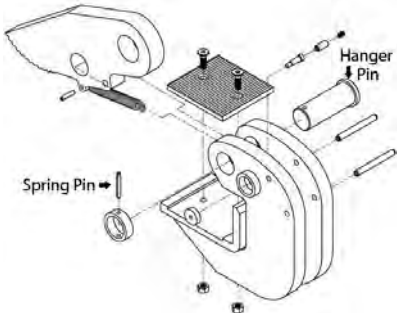


| | | | | | | | |
|---|-------------|----|------------|----|------------|----|---------------|
| 1 | Nut | 7 | Hook Nut | 13 | Handle | 19 | Right Plate |
| 2 | Shackle | 8 | Spring Pin | 14 | Wheel Pin | 20 | Wheel Pin Nut |
| 3 | Hatch Pin | 9 | Axle | 15 | Plate Nut | 21 | Bolt |
| 4 | Shackle Pin | 10 | Swivel Eye | 16 | Left Plate | 22 | Grease Cup |
| 5 | Hook | 11 | Tub Wheel | 17 | Wheel | 23 | Washer |
| 6 | Fork Eye | 12 | Safety Nip | 18 | Bearing | | |

SHEAVE BLOCK SPARE PARTS

SHEAVE BLOCK SPARE PARTS

| DIA. (mm) | SUIT FOR | Manila Rope Sheave Wheel | DIA. (mm) | SUIT FOR | Wire Rope Sheave Wheel |
|-----------|---|---|-----------|---|---|
| |  |  | |  |  |
| | | Manila Rope Sheaves | | | Wire Rope Sheaves |
| 75 | 139075F | 070075M | 75 | 139075W | 070075W |
| 100 | 139100F | 070100M | 100 | 139100W | 070100W |
| 125 | 139125F | 070125M | 125 | 139125W | 070125W |
| 150 | 139150F | 070150M | 150 | 139150W | 070150W |

HORIZONTAL PLATE CLAMP SPARE PARTS

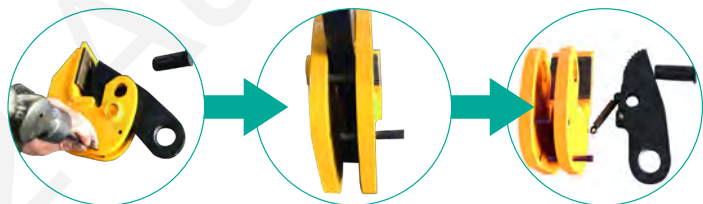
| HORIZONTAL CLAMP PLATE CLAMP REPAIR KITS | | | | | | |
|---|---|-----------|--------|---|-----------|--------|
| TECHNICAL DRAWING | LITTLE PAD | | | ACTION JACK (BRAKE ASSEMBLY) | | |
|  |  | | |  | | |
| | WLL | CODE | SUIT | WLL | CODE | SUIT |
| | 0.75T | 032075SP1 | 143075 | 0.75T | 032075SP2 | 143075 |
| | 1T | 032100SP1 | 143100 | 1T | 032100SP2 | 143100 |
| | 1.5T | 032150SP1 | 143150 | 1.5T | 032150SP2 | 143150 |
| | 2T | 032200SP1 | 143200 | 2T | 032200SP2 | 143200 |
| | 3T | 032300SP1 | 143300 | 3T | 032300SP2 | 143300 |
| | 5T | 032500SP1 | 143500 | 5T | 032500SP2 | 143500 |

Removal steps

- 1 Use tools to knock the spring pin off, then pull the hanger pin out.



- 2 Use the tool to knock the hanger pin off, then the main components are dismounted including brake assembly.

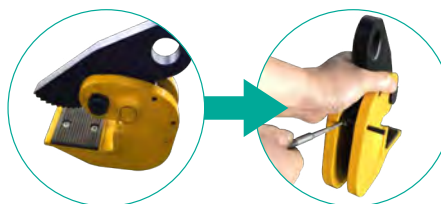


Installation steps

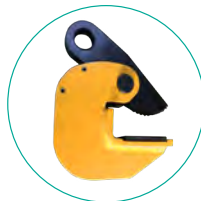
- 1 Put the brake into the body of clamp and align the center of the holes of brake and the body.



- 2 Insert the the hanger pin and remember to connect the spring pin and the rear spring pin.

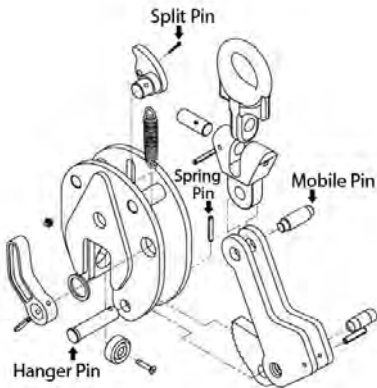




- 3 Knock the corresponding spring pin into the body.



Note: All structural repair or subsequent work to load-bearing components must be carried out in accordance with AS4991.

UNIVERSAL PLATE CLAMP SPARE PARTS

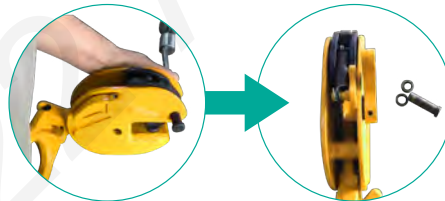
| UNIVERSAL CLAMP PLATE CLAMP REPAIR KITS | | | | | | |
|---|---|-----------|--------|---|-----------|--------|
| TECHNICAL DRAWING | LITTLE PAD | | | ACTION JACK (BRAKE ASSEMBLY) | | |
|  |  | | |  | | |
| | | | | | | |
| | WLL | CODE | SUIT | WLL | CODE | SUIT |
| | 0.75T | 031075SP1 | 142075 | 0.75T | 031075SP2 | 142075 |
| | 1.5T | 031150SP1 | 142150 | 1.5T | 031150SP2 | 142150 |
| | 2T | 031200SP1 | 142200 | 2T | 031200SP2 | 142200 |
| | 3T | 031300SP1 | 142300 | 3T | 031300SP2 | 142300 |
| 5T | 031500SP1 | 142500 | 5T | 031500SP2 | 142500 | |

Removal steps

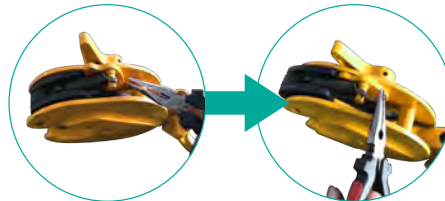
- 1 Use tools to knock the spring pin off, then pull the hanger pin out.



- 2 Use the tool to knock the hanger pin off, then remember to keep the hanger pin and the two shims together.



- 3 Pull out the split pin.



- 4 Use tools to knock the spring pin off, then pull the hanger pin out.

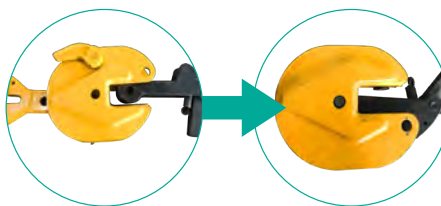


- 5 Push the mobile pin out with your finger.



Installation steps

- 1 Align the eyelet hole, the body hole, and the connecting rod hole so that the three holes are at the same center point



- 2 Insert the mobile pin into the hole and pull the brake to fit the groove (Figure 3)

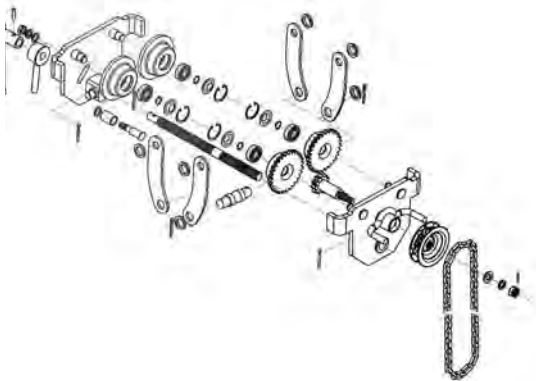



- 3 Assemble the connector, the lower pin, the spring, etc.



Note: All structural repair or subsequent work to load-bearing components must be carried out in accordance with AS4991.

GEARED TROLLEY WITH CLAMP SPARE PARTS

| GIRDER TROLLEY WITH CLAMP SPARE PARTS | | | |
|---|--|---|----------|
| ENGINEER DRAWING | | WHEEL | |
|  | |  | |
| | | WLL | SUIT |
| | | CODE | |
| | | 1T | 060001SP |
| | | 2T | 060002SP |
| | | 3T | 060003SP |
| | | 5T | 060005SP |
| | | 10T | 060010SP |