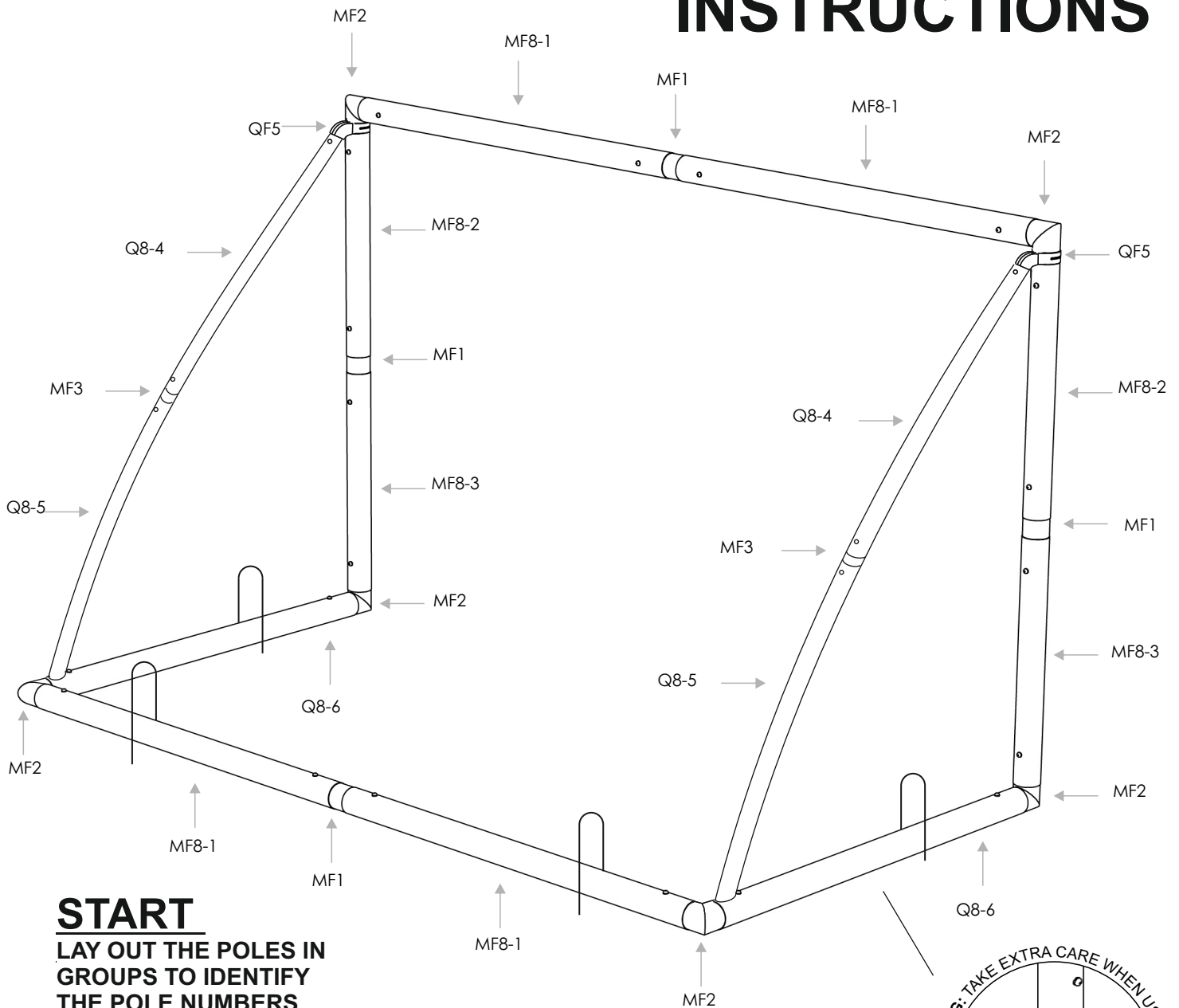


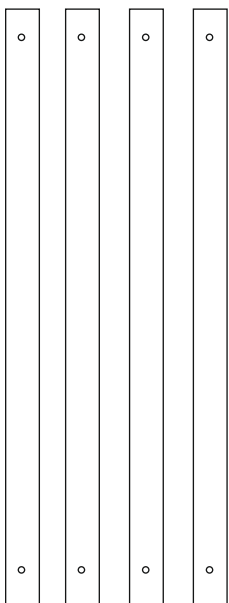
Q-FOLD 8x5 INSTRUCTIONS



START

LAY OUT THE POLES IN GROUPS TO IDENTIFY THE POLE NUMBERS

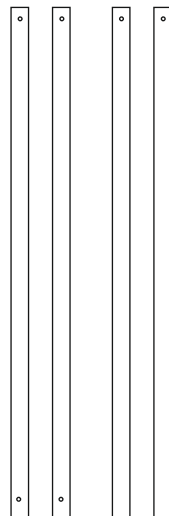
MF8-1



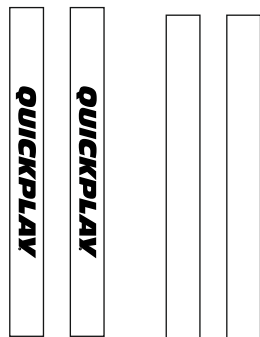
Q8-6



Q8-4 Q8-5

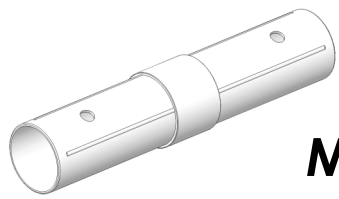


MF8-2 MF8-3

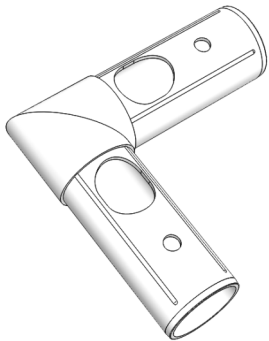


QUICKPLAY

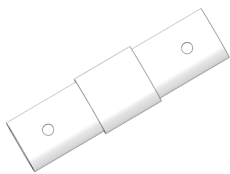
Q-FOLD 8X5 INSTRUCTIONS



MF1 X4



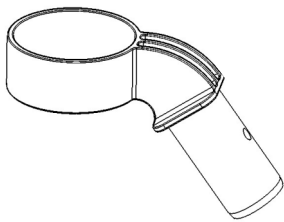
MF2 X6



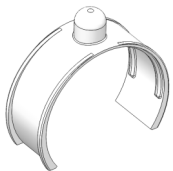
MF3 X2



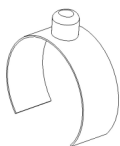
MF4 X20



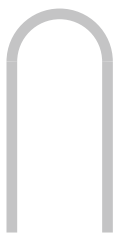
QF5 X2



MF6 X20

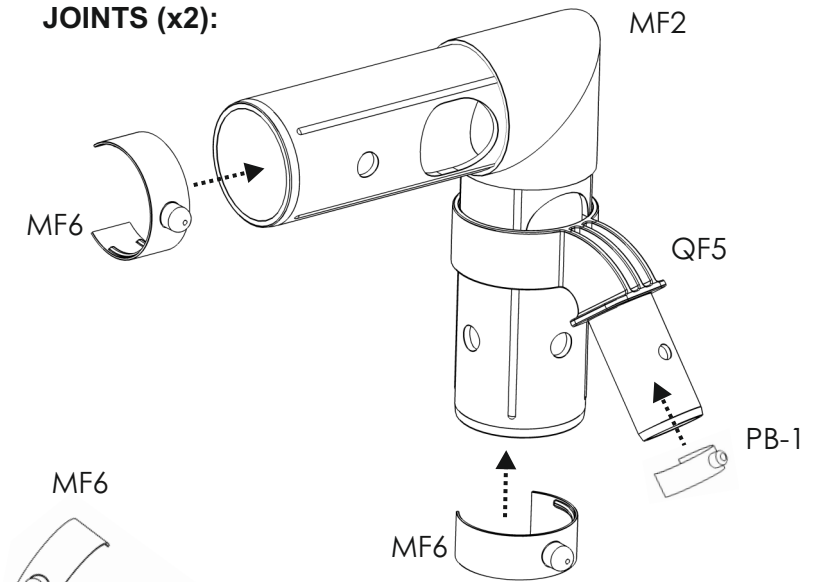


PB-1 X6

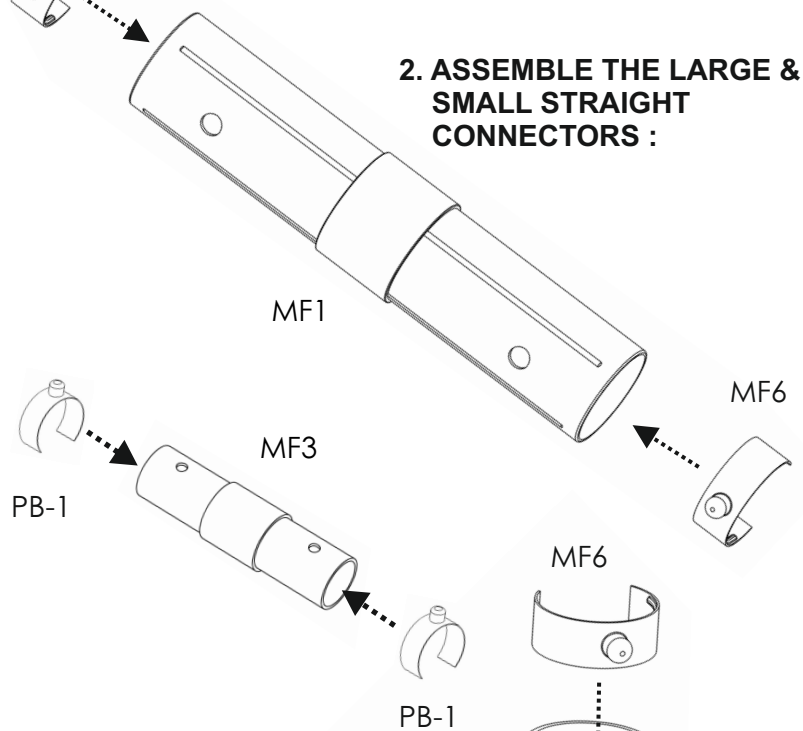


STAKE X4

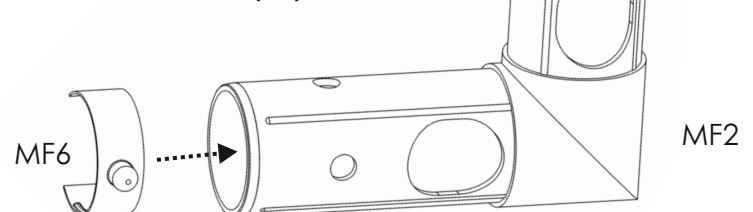
1. ASSEMBLE THE TOP CORNER JOINTS (x2):



2. ASSEMBLE THE LARGE & SMALL STRAIGHT CONNECTORS :



3. ASSEMBLE BOTTOM CORNER CONNECTORS (x4):



SET-UP

4. ASSEMBLE GOAL FACE DOWN ON THE GROUND, STARTING WITH THE GOAL POSTS & CROSSBAR

WARNINGS

1. Must be assembled by an adult.
2. To be used on a flat surface.
3. Check the frame is fully assembled and secured to the net before use.
4. Check the frame is secured to the ground before use.
5. Do not climb or hang on the structure. Regularly check for wear and tear.
6. Stop using if any part of it breaks, failure to do this may result in injury.
7. Keep away from heat sources.
8. This product is not suitable for children under 3 years of age.
9. Not suitable for use in high winds.

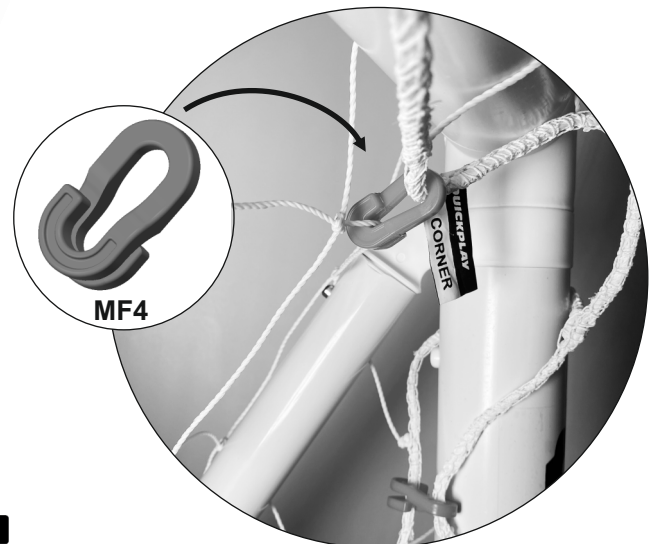
5. ADD BASE

7. BEND SIDE TUBE FORWARD AND LOCK ONTO Q5 JOINT

6. ADD SIDE TUBES

ATTACH NET

FIND THE TOP CORNER TABS ON THE NET, LOOP IT OVER THE POSTS AND USE THE M4 CLIPS TO SECURE THE NET



8. ONCE ALL PARTS ARE CONNECTED, STAND THE GOAL FRAME UPRIGHT & ADD GROUNDS STAKES IF ON GRASS



DO NOT HANG ON ME
(CROSSBAR MAY BEND OR BREAK)

FOLD AWAY

3. FOLD SIDE IN

1. REMOVE BACK BAR

2. PRESS THIS BUTTON



QUICKPLAY

