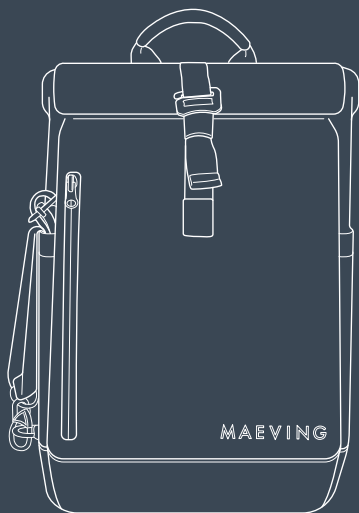


MAEVING



PANNIER FITTING KIT

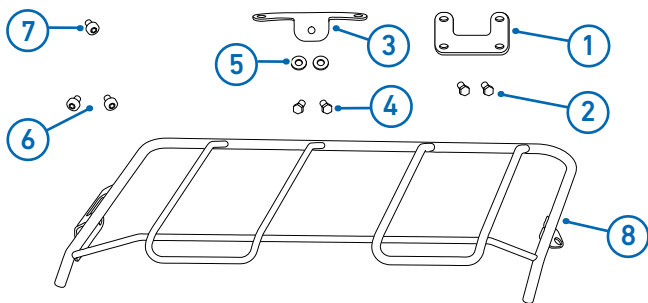
MAEVING

PANNIER FITTING KIT

Tools required:

- T30 Torx™
- 10 mm hexagonal spanner

Parts supplied:



1.	Pannier rail lower retaining bracket (motorcycles delivered before 10/08/2023 only)	1 off	6.	Bolt T30, M6 x 12 mm	2 off
2.	Bolt 10 mm, M6 x 10 mm (motorcycles delivered before 10/08/2023 only)	2 off	7.	Bolt T30, M6 x 10 mm	1 off
3.	Pannier rail upper retaining bracket	1 off	8.	Pannier rail	1 off
4.	Bolt 10 mm, M6 x 10 mm	2 off	9.	Pannier (not show)	1 off
5.	Washer M6	2 off			

Warnings, Cautions and Notes



Warning: The maximum safe carrying capacity for the pannier is 3 kg. Never overload the pannier as this could cause the motorcycle to become unstable, which could lead to loss of control and an accident.



Caution: The maximum safe carrying capacity for the pannier is 3 kg. Never overload the pannier as this could cause damage to the motorcycle and accessories.



Note: Support the motorcycle with the side stand or use suitable paddock stand(s) to improve access to the bottom of the frame when fitting the pannier lower bracket.



Note: Make sure the motorcycle is in a clean and well-lit environment and lay out all the required parts needed to fit the accessory kit to your motorcycle before commencing the installation of the accessory kit.



Note: Read all of the information in this fitting instruction and fully understand the installation process before attempting to fit the accessory kit.

PANNIER RAIL INSTALLATION

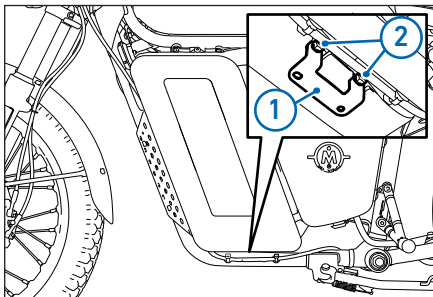
Motorcycles delivered before 10/08/2023 only



Note: If the pannier rail is fully installed to the motorcycle, we would recommend it is not removed, unless necessary. If the pannier rail needs to be removed, reverse the pannier rail installation steps.

1.

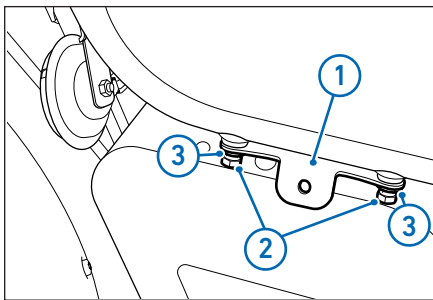
Align the pannier rail lower retaining bracket (1) to the left-hand side of the motorcycle and loosely install the bolts (2) M6 x 10 mm (10 mm hexagonal). Tighten the front bolt and then the rear bolt to **8 Nm**.



All motorcycles

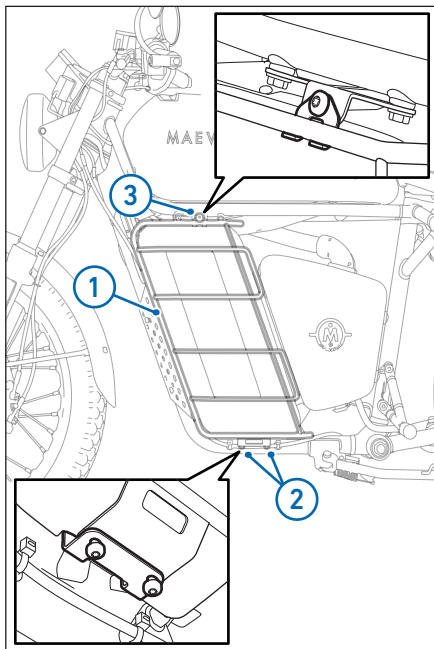
2.

Align the pannier rail upper retaining bracket (1) to the left-hand side of the motorcycle and loosely install the bolts (2) M6 x 10 mm (10 mm hexagonal) and washers (3) M6. Tighten the front bolt and then the rear bolt to **8 Nm**.



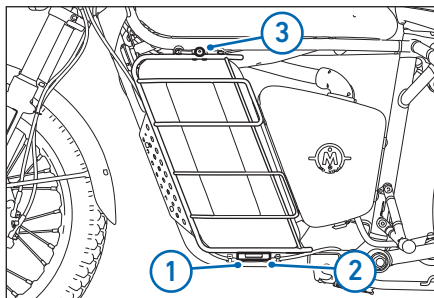
3.

Align the pannier rail (1) to the upper and lower retaining brackets and loosely install the lower bolts (2) M6 x 12 mm (T30 Torx™) and the upper bolt (3) M6 x 10 mm (T30 Torx™).



4.

Tighten in the sequence shown to **8 Nm**.



Pannier loading and installation

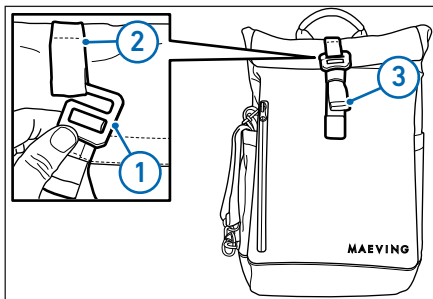
With the pannier rail fitted to the motorcycle, the pannier attaches to the motorcycle using the top two bars of the pannier rail.

1.

Place your items inside the pannier and fold the top of the pannier closed.

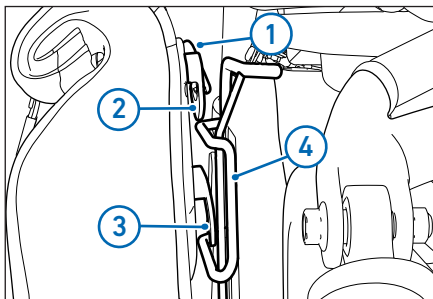
2.

Slide the G-clip (1) into the loop section (2) of the pannier. Pull the strap (3) to fully secure the pannier closed.



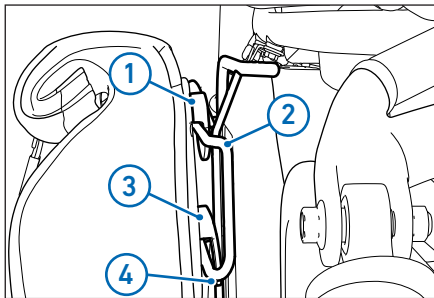
3.

Press down on the locking clasp (1) on the pannier. Align the locking clasp (2) to the second bar and the retaining hook (3) to the third bar on the pannier rail (4).



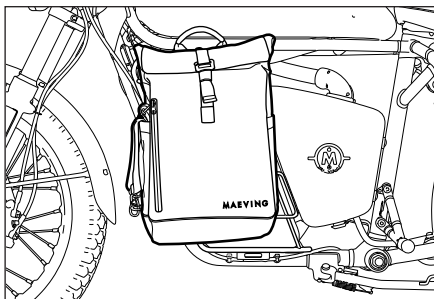
4.

Lower the pannier to the pannier rail. Make sure the locking clasp (1) locks securely to the second bar (2) and the retaining hook (3) remains engaged with the third bar (4).



5.

The pannier is now attached to the pannier rail and motorcycle.



Note: Before riding the motorcycle, always give the pannier a pull and push to make sure it is securely attached to the pannier rail. If the pannier is not attached correctly repeat steps 3 and 4.

MAEVING

www.maeving.com

For general enquiries, please email the Maeving Support Team at:
support@maeving.com

© Maeving Limited.

This publication, or any part thereof, may not be reproduced, copied or translated without the sole permission of Maeving.