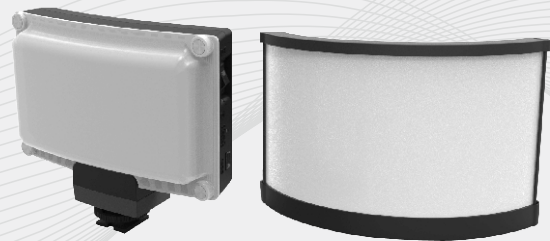


FotodioX<sup>®</sup>  
F O T O D I O X



*Radius<sub>pico</sub> | Radius<sub>mini</sub>*

USER MANUAL



## Radius Pico

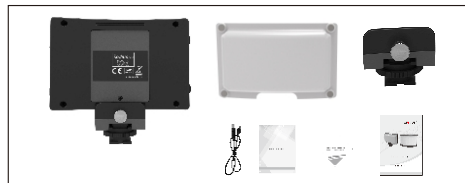
### Characteristics:

1. Radius Pico is composed of 128 ultra-bright chip LEDs with a lifespan of up to 50,000 hours. These LEDs have a standardized color temperature with a CRI and TLCI of 95 or above.
2. Handsome light-weight, compact design that is easy to mount on camera with the included hot shoe adapter.
3. Built-in battery for normal use.
4. Use with the included neutral white diffusion panel for a softer beam of light.
5. The magnetic design of the diffusion panel makes it easy to add and remove as needed.
6. The convex design provides soft wrap-around light with less shadow and a wider angle of coverage than an equivalent flat lighting unit.
7. Dimmable from 10%-100% and flicker-free due to the PWM integrated design.
8. Bi-color design is adjustable from 3200K(tungsten) to 5600K(daylight).
9. Suitable for indoor and outdoor photography and videography. Great for portraits, weddings and children.

### Warnings:

1. Do not disassemble or modify the light.
2. When not in use for extended periods of time, Do discharge and recharge the batteries at least one time monthly.
3. Do not drop or damage the batteries; doing so may increase risk of fire.
4. Do not burn the batteries; properly dispose of them according to local regulations.
5. Do not operate with wet hands, doing so may cause electric shock.
6. Do not operate in environments near flammable gases or volatile liquids as this may increase the risk of explosion fire.
7. Do not touch the plug or AC adapter with wet hands, doing so may cause electric shock.
8. Do not damage, disassemble, twist or modify the power cord as this may increase the risk of fire and electric shock.
9. Do not place under heavy objects.
10. Avoid dust and debris build-up as this will change the illuminance and color temperature.
11. Keep the light surface clean with a soft, dry cloth.

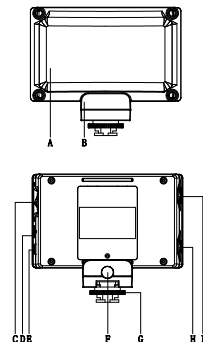
### Packing list:



### Radius Pico

- |               |                         |             |
|---------------|-------------------------|-------------|
| ① Radius Pico | ② White diffusion panel | ③ USB cable |
| ④ Hot shoe    | ⑤ Manual                |             |

### Parts Diagram:



### Radius Pico

- Ⓐ White diffusion panel
- Ⓑ Hot shoe adapter
- Ⓒ Power ON/OFF switch
- Ⓓ Battery indicator
- Ⓔ USB charging port
- Ⓕ Screw for hot shoe adapter
- Ⓖ Dial for hot shoe adapter
- Ⓗ Color temperature control knob
- Ⓘ Brightness control knob



## Specifications:

SIZE	MODEL	Radius Pico
LED		128pcs of ultra bright chip LEDs
Illuminance		5600K(w/diffusion panel): 455Lux/0.5m, 133Lux/m 5600K(w/o diffusion panel): 667Lux/0.5m, 185Lux/m 3200K(w/diffusion panel): 423Lux/0.5m, 120Lux/m 3200K(w/o diffusion panel): 637Lux/0.5m, 173Lux/m
Beam angle		140° (w/white diffusion panel) 120° (w/o white diffusion panel)
Color temperature		3200K±200K ~ 5600K±300K
CRI		Ra: 95-98
TLCI		≥95
Power (LEDs)		5W
Working voltage		DC5V
Continuous working time		Approx 1.5hrs
Battery Type		Built-in rechargeable Lithium battery, 2500mAh, 3.7V
Battery lifetime		Approx 500 cycles
Battery recharging time		Approx 4-5hrs
Dimension		12x2.7x7.5cm(w/o diffusion panel) 12x4x7.5cm(w/diffusion panel)
Weight		166g (w/diffusion panel), 144g (w/o diffusion panel)
Accessories		Hot shoe, diffusion panel, USB cable, kit bag

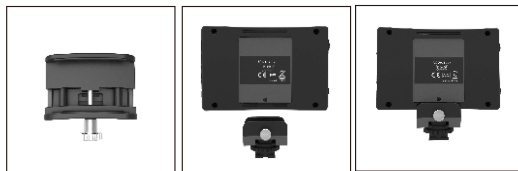
## Operating Instructions:

1. Attach the white diffusion panel by lining up the magnets on the diffuser with the magnets on the light unit.



2. How to attach the hot shoe adapter

- (1) Adjust the screw of the hot shoe adapter until one end of the adapter fits onto the light.
- (2) Place the end of the adapter into the light slot; adjust the screw clockwise to attach to the adapter.
- (3) Place the opposite end of the hot shoe adapter into the camera's hot shoe; adjust the dial on the adapter to create a firm connection with the camera.



3. Operating Instructions

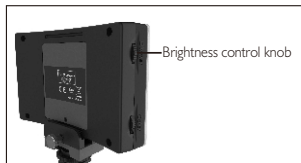
- (1) Turn the power on using the ON/OFF switch on the upper left side of the light unit.





- (2) The brightness can be adjusted using the brightness control knob on the upper right side of the light unit. Turn clockwise to increase and counterclockwise to decrease brightness.

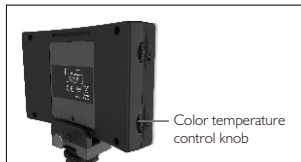
The brightness control knob will allow you to adjust from 10% to 100% brightness.



Brightness control knob

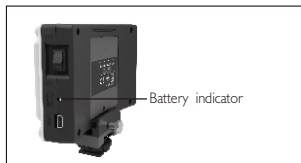
- (3) The color temperature can be adjusted using the color temperature control knob on the lower right side of the light unit. Turn clockwise to increase and counterclockwise to decrease the color temperature.

The color temperature control knob will allow you to adjust from 3200K(tungsten) to 5600K(daylight).



Color temperature control knob

- (4) When charging the battery indicator light will show red while the light unit is charging and green when the unit is fully charged. While the light is in use the battery indicator light will show red if the remaining power is 10% or less; green when there is more than 10% power remaining.



Battery indicator

## Radius Mini

### Characteristics:

1. Radius Mini is composed of 600 ultra-bright chip LEDs with a lifespan of up to 50,000 hours. These LEDs have a standardized color temperature with a CRI and TLCI of 95 or above.
2. Handsome light-weight, compact design that is convenient to transport.
3. LCD displays real-time data.
4. The convex design provides soft wrap-around light with less shadow and a wider angle of coverage than an equivalent flat lighting unit.
5. Produces a soft, bright and stable beam with standard color temperature.
6. The unit is heat free and remains consistently illuminated even as the battery voltage drops.
7. Dimmable from 10%-100% and flicker-free due to the PWM integrated design.
8. Bi-color design is adjustable from 3200K(tungsten) to 5600K(daylight).
9. Suitable for indoor and outdoor photography and videography. Great for portraits, weddings and children.

### Warnings:

1. Do not disassemble or modify the light.
2. Do not remove the batteries when in storage.
3. When not in use for extended periods of time, Do discharge and recharge the batteries at least one time monthly.
4. Do not short circuit the batteries as this may seriously damage the batteries and increase risk of fire.
5. Do not drop or damage the batteries; doing so may increase risk of fire.
6. Do not burn the batteries; properly dispose of them according to local regulations.
7. The 12V 2A adapter is used for battery charging and for powering the light from an electrical outlet.
8. Do not operate with wet hands, doing so may cause electric shock.
9. Do not operate in environments near flammable gases or volatile liquids as this may increase the risk of explosion fire.
10. Do not touch the plug or AC adapter with wet hands; doing so may cause electric shock.
11. Do not damage, disassemble, twist or modify the power cord as this may increase the risk of fire or electric shock.
12. Do not place under heavy objects.
13. Avoid dust and debris build up as this will change the illuminance and color temperature.
14. Keep the light surface clean with a soft, dry cloth.
15. Only use the AC power cord provided; please contact us if you require a replacement.



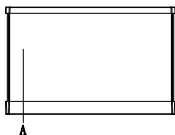
## Packing list:



Radius Mini

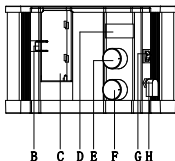
- ① Radius Mini    ② AC adapter(charger,24W)    ③ Lithium battery  
 ④ Battery charger    ⑤ Ball head    ⑥ Manual

## Parts diagram:

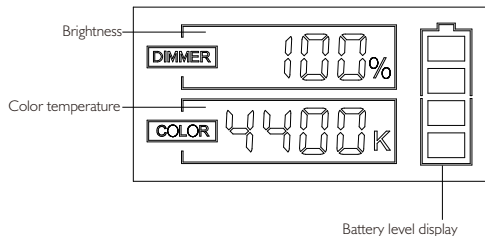


Radius Mini

- (A) Curved light panel  
 (B) Battery release button  
 (C) Battery slot  
 (D) LCD screen  
 (E) Brightness control knob  
 (F) Color temperature control knob  
 (G) Power ON/OFF switch  
 (H) DC input



## LCD display:



## Specifications:

SIZE	MODEL	Radius Mini
LED		600pcs of ultra bright chip LEDs
Illuminance		5600K: 1105 Lux/0.5m, 312Lux/m 3200K: 980Lux/0.5m, 283Lux/m
Beam angle		180°
Color temperature		3200K±200K ~ 5600K±300K
CRI		Ra: 95-98
TLCI		≥95
Power (LEDs)		36W
Working voltage		DC 12-17V
Continuous working time		Approx 1.5hrs
Battery type		Rechargeable lithium battery, 4400mAh, 7.4V
Battery lifetime		Approx 500 cycles
Battery recharging time		Approx 4-5hrs
Battery level display		YES
Dimension		19.1x6.7x12.1cm
Weight		534g
Accessories		4400mAH lithium battery, AC adapter 12V 2A, battery charger, ball head, kit bag

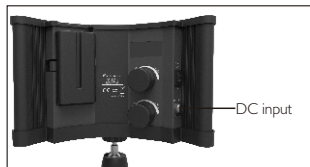


## Operating Instructions:

## 1. Power supply

- (1) Insert the plug of the AC adapter into DC input socket on the right side of the control box.
- (2) Connect the AC adapter to the external AC power.(AC 100V-240V).
- (3) For DC power supply, put the provided battery into the battery slot.

Notes: Please remove the battery when using the AC power adapter



## 2. Battery power:

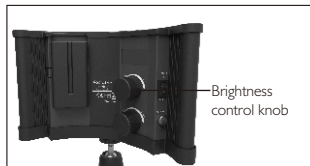
- (1) Install the provided battery and turn on the power switch.

The LCD screen shows real-time brightness,color temperature and battery level.



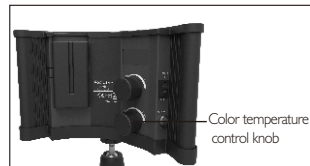
- (2) The brightness can be adjusted using the brightness control knob.

Turn clock-wise to increase or counter clock-wise to decrease brightness.



- (3) The color temperature can be adjusted using the color temperature control knob. Turn clockwise to increase and counterclockwise to decrease the color temperature.

The Color temperature control knob will allow you to adjust from 3200K(tungsten) to 5600k(daylight).



- (4) The right side of the LCD displays the battery level.

Four bars: 75-100% remaining power

Three bars: 50-75% remaining power

Two bars: 25-50% remaining power

One bar: 10%-25% remaining power

No bars: 10% or less remaining power

Flickering:Not enough remaining power to operate the unit;recharge the battery

