

IMPORTANT SAFETY PRECAUTIONS

READ ALL INSTRUCTIONS BEFORE USING THE BABY BOTTLE WARMER.

KEEP THESE INSTRUCTIONS FOR FUTURE REFERENCE.

IMPORTANT SAFEGUARDS

THIS IS AN ATTENDED APPLIANCE. Do not leave unattended during use, unplug after each use (risk of fire if an unattended appliance is left operating or plugged in).

- This appliance must not be used by children younger than 8 years old and persons with very extensive and complex disabilities. Children aged 8-14 years and persons with reduced physical, sensory or mental capabilities or lack of experience and knowledge shall not use this appliance unless they are supervised and have been given instruction concerning the use of the appliance in a safe way and understand the hazards involved. Children shall not play with the appliance.
- Cleaning and user maintenance shall not be made by children unless they are older than 8 and supervised.
- Keep the appliance and its cord out of reach of children less than 8 years old.

Appliances can be used by persons with reduced physical, sensory, or mental capabilities or lack of experience and knowledge if they have been given supervision or instruction concerning use of the appliance in a safe way and understand the hazards involved.

This appliance is intended for household use only. If the appliance is used improperly or for professional or semi-professional purposes or if it is not used according to these instructions the Guarantee becomes invalid and Dualit refuses any liability for damage caused.

- Check that the voltage marked on the appliance corresponds with the supply voltage.
- Note: any plug cut from the power supply cord should be disposed of immediately. Inserting any cut off plug into a 13A socket-outlet is hazardous.

Before connecting to the Mains Supply

- Never use the plug without the fuse cover fitted. Ensure replacement fuse is the same current value as the original. Replacement fuses are available and should be ASTA approved to BS1362.
- We recommend that the appliance is plugged into a socket that has no other appliance connected to it. Failure to do this may cause an overload, trip a circuit breaker, or blow a fuse. Preferably the socket outlet should be protected by a residual current device (RCD).
- Should the light remain illuminated after using the appliance, immediately unplug the appliance and call Dualit's Customer Helpline on +44 (0) 1293 652 500. Risk of electric shock.
- Do not place the appliance or mains lead on or near any hot surface, hob, gas burner or in a heated oven. Risk of electric shock and fire.
- To be protected against electrical hazards, fire, and injury to persons, do not immerse the mains lead, plug or appliance in water or any other liquid. Risk of electric shock.
- Do not operate any appliance with a damaged lead or plug, or after the appliance malfunctions or has been dropped, damaged, or cracked in any manner. Risk of electric shock and fire.
- To avoid a hazard, if the power cord is damaged it must, for safety reasons, be replaced by Dualit or an authorised Dualit repairer. Call Dualit's Customer Helpline on +44 (0) 1293 652 500. Risk of electric shock and fire.
- A short power-supply cord is provided to reduce risks resulting from becoming entangled in or tripping over a longer cord. Risk of fire.
- Do not allow the cable to hang over the edge of a table or countertop. Risk of fire.
- Never tamper with the safety systems. They are included for your personal safety. Risk of injury.
- Do not misuse the appliance; it is designed for use with milk and food items only. Risk of injury.
- Do not add boiling liquids or foods into the inner chamber. Risk of sudden steam and liquid being ejected. Risk of injury.
- Turn the power off via the Control Panel and unplug before opening the Lid. Risk of fire.

- Do not remove or open the Lid while the appliance is switched on. Risk of scalding.
- Switch off the appliance and disconnect from supply before approaching while in use. Risk of scalding.
- Clean all parts after each use; please refer to the cleaning instructions.
- Do not operate the appliance unless there is water in the Water Bath, see table below for amounts. Risk of affecting the life of the Bottle Warmer.
- | | |
|----------------------|---------------|
| Single Bottle Warmer | 45ml of water |
| Double Bottle Warmer | 90ml of water |
- Do not store or use in an appliance garage or under cupboards. Risk of fire.
- Ensure that the appliance is assembled with all components in place before turning on. Risk of scalding.
- For safety reasons keep hands and utensils out of the Water Bath while switched on to reduce the risk of injury to persons or damage to the appliance. Risk of scalding.
- Do not remove items from the appliance while it is switched on. Risk of scalding.
- Cautions: Product surface, Element and appliance interior are subject to residual heat after use. Risk of scalding.
- **Hot Water Hazard.** Avoid direct contact with hot water. Unplug the appliance from the mains to allow to cool before cleaning, maintaining, moving or storing. For details, please refer to the cleaning section. Risk of scalding.
- **Warning - steam hazard:** When boiling, hot steam will be emitted from the appliance. Scalding may occur if you are within 400mm of the steam vent.
- Scalding may occur if the lid is opened during a cycle.

Before returning any product under this Guarantee, please check that:

- You have followed the product instructions correctly.
- Your mains electricity supply is functional.
- The defect is not due to a blown fuse.

If you wish to claim under this guarantee you should:


- Send the product, postage or carriage paid, to the dealer from whom it was purchased or to Dualit direct.
- Ensure that the product is clean and packed carefully (preferably in its original carton).
- Enclose details of your name, address and telephone number and when and where the product was purchased, together with proof of purchase (e.g. a till receipt).
- Give exact details of the nature of the defect.

This Guarantee does not cover any other claims whatsoever, including, without limitation, any liability for incidental, indirect or consequential damage, nor does it cover any claims for conversion or modification or for the costs of repair carried out by any third party without the prior consent of Dualit. If replacement parts are fitted to the product this will not extend the period of the Guarantee.

For further advice contact the Dualit customer helpline on +44 (0) 1293 652 500 (09:00 to 17:00 Monday to Friday).


Alternatively, email Dualit at info@dualit.com or visit www.dualit.com

Do not throw away the appliance with the normal household waste at the end of its life, but hand it in to an official collection point for recycling. By doing this you help preserve the environment.



INSTRUCTIONS ON ENVIRONMENT PROTECTION

Do not dispose of this product in the usual household garbage at the end of its life cycle. Please hand it over to a collection point for the recycling of electrical and electronic appliances. The symbol on the product, the instruction of use or the packaging will inform you about the methods of disposal. The materials are recyclable as mentioned on its marking. By recycling, material recycling or other forms of re-utilization of old appliances you are making an important contribution to protect our environment. Please inquire at the community administration for the authorised disposal location.



SAVE THESE INSTRUCTIONS

In the interest of improving products, Dualit Ltd. Reserves the right to change the product specification without prior notice. All illustrations are for representation only, your model may vary from illustrations shown.

- Unpack the box with care, keeping all the packaging materials until you are satisfied everything is present and in working order. Once satisfied remove any tags from the appliance body and recycle the packaging appropriately. Do not remove tags from the cord. You may wish to keep the box to store your appliance. manual included with the warning rack.

GUARANTEE

This appliance is of excellent quality and construction. However, if any defects in materials or workmanship do appear during the relevant guarantee period, we will, at our discretion, either repair or replace the defective parts, free of charge, subject to the terms and conditions of our Guarantee shown below.

This Guarantee covers both parts and labour. Carriage is not included.

Your Guarantee period is as follows:

- 1 year

This Guarantee provides benefits which are additional to, and do not affect, your statutory rights. This Guarantee does not cover the cost of returning the product to the dealer from whom it was purchased or to ourselves. This Guarantee applies only to products sold and located in mainland Great Britain. It does not cover liability in respect of or replacement of plugs, cables or fuses and also does not cover defects due to:

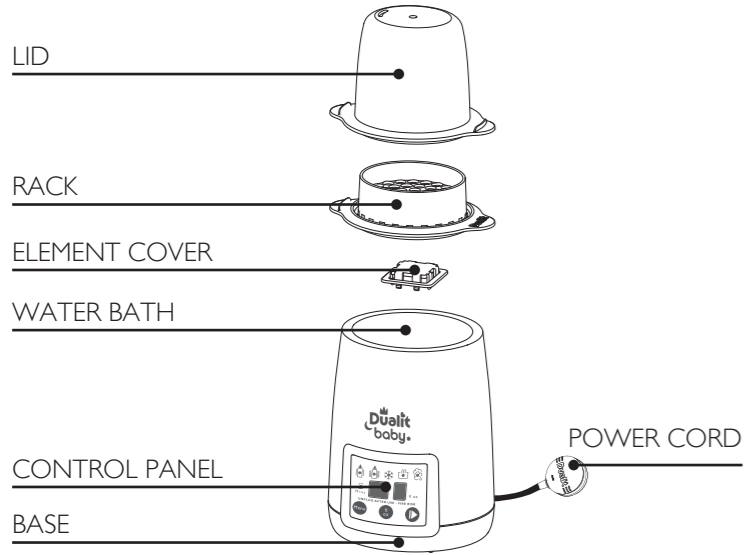
- Failure to use or maintain product in accordance with Dualit's instructions.
- The product being connected to an unsuitable electricity supply.
- Accidental damage to or abuse or misuse of the product.
- Product modification, except by Dualit or approved agent.
- Dismantling of or interference with the product.
- Theft or attempted theft of the product.

- Always check the temperature of milk and food before feeding your baby. To test milk, shake drops onto the inside of your wrist. To test food place a metal spoon to the bottom of the container, wait 5 seconds and withdraw the spoon, rest the spoon against your lips. Do not heat food for longer than is required and stir well before serving. Risk of scalding.
- Always pour any remaining water out of the appliance after use, after the appliance has cooled down and has been unplugged. Risk of Contamination.
- The use of accessory attachments is not recommended by Dualit and may result in fire, electric shock, or injury to persons.

Descalc Regularly

Do not operate the appliance if filled with descaling solution. This can cause damage to the machine and burning/scalding risk to user.

KNOW YOUR BABY BOTTLE WARMER



FUNCTIONS		
ICON	FUNCTION	DESCRIPTION
	Milk Warming	Evenly warms the milk to approximately 32-42°C. The perfect temperature for your baby. Recommended setting for milk warming.
	Fast Milk Warming (20% quicker at 9oz)	Quickly and evenly heats larger volumes of milk to approximately 30-44°C. Perfect when you are in a rush with older babies. Caution: bottle/jar will be hot if left in the Milk Bottle Warmer after the program has finished. Caution: For Double Milk Warmer milk will be too hot if bottles contain mixed levels of milk/food.
	Defrosting	Defrosts frozen milk or baby food.
	Food Warming	Heats food up to 60°C.
	Sterilising	Used to sterilise bottles, teats, and accessories*. Always thoroughly wash items before sterilising. This function kills 99.9% of bacteria.
CONTROLS		
ICON	CONTROLS	DESCRIPTION
	Menu button	Toggling between the 5 functions. The function selected will illuminate.
	Volume button	Adjusts the volume (Fl. Oz.) of milk/food being heated. This must be set each time a new function is selected. Cycle Time Indicator will automatically change for the selected volume. Adjustable volume ranges between 2oz (58ml) and 9oz (225ml).
	Start/Stop/Standby button	For switching between starting, stopping and entering standby mode. To switch off unplug.
DISPLAY		
ICON	CONTROLS	DESCRIPTION
	Cycle Time Indicator	Indicates how long a cycle will take, once the cycle is started, this will count down to zero in minutes.
	Volume Indicator Single Bottle Warmer	Indicates the volume of milk/food to be heated. This volume corresponds to the amount of milk in one bottle.
	Volume Indicator Double Bottle Warmer	If heating 2 bottles/containers, select the volume of one bottle. Both bottles/containers must contain equal amounts. Risk of under heated milk/food if more milk/food is in one of the containers.

*Bottles will be sterile for 24 hours after cycle as long as the lid isn't removed.

The chart below shows the preprogrammed times for each of the warming functions for the corresponding volumes of milk/food being heated for both the Single and Double Bottle Warmer.

FUNCTIONS	*MILK WARMING	*FAST MILK WARMING	DEFROSTING	**FOOD WARMING 1g +1ml of water	STERILISING
2 oz (56 ml)	5 min	5 min	5 min	12 min	30 min
3 oz (85ml)	6 min	6 min	10 min	13 min	
4 oz (114ml)	8 min	6 min	15 min	20 min	
5 oz (142ml)	9 min	8 min	19 min	23 min	
6 oz (170ml)	9 min	8 min	20 min	24 min	
7 oz (198ml)	10 min	9 min	20min	25 min	
8 oz (227ml)	11 min	10 min	21 min	31 min	
9 oz (225 ml)	12 min	10 min	22 min	32 min	

Note: Sterilising function always takes 30 minutes. This time cannot be changed.

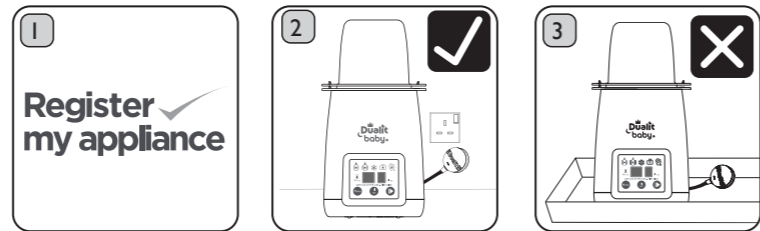
Always remove bottle/jar from the warmer as soon as the cycle has finished. Failure to do so will result in a **risk of scalding baby**.

+ Always gently shake milk bottle to avoid hot spots and check the temperature every time by placing drops onto the inside of your wrist before serving. Failure to do so will result in a **risk of scalding the baby**.
 ++ Always ensure milk/food is thoroughly heated. Stir any food halfway through the cycle to avoid hot spots. Test food by placing a metal spoon to the bottom of the container, wait 5 seconds and withdraw the spoon, rest the spoon against your lips. **Caution: Risk of food poisoning.**

SETTING UP

Read and follow these instructions before using your Baby Bottle Warmer. This is an attended appliance. Do not leave unattended during use, unplug after each use (risk of fire if an unattended appliance is left operating).

Never remove the lid while the Baby Bottle Warmer is operating. (Function light is illuminated). **Warning: Hot water and steam may cause injury and burns; keep hands away from hot surfaces and steam vents. Risk of scalding.**



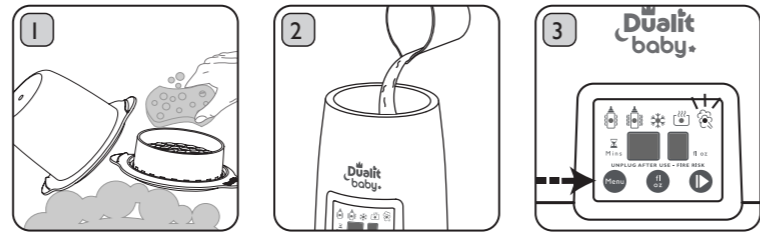
1 **Register my appliance**
Register your product at Dualit.com this will only take 60 seconds; you will need the product model and serial numbers that are on the rating label on the base of the product.

2 Position the Baby Bottle Warmer Base on a flat dry surface away from sources of heat, as close to the wall socket as possible. **Do not store or use the Baby Bottle Warmer under kitchen cabinets, in an appliance garage, close to curtains or flammable material as it will emit steam from the steam vent in the Lid. Caution: Do not cover vent, risk of fire.**

3 Ensure that the Baby Bottle Warmer is placed on a heat resistant work surface. Do not operate on a tray that can collect water. **Risk of electric shock.** Do not let the cord hang over the edge of work surfaces or touch hot surfaces.

USING YOUR BABY BOTTLE WARMER

Before the first use or after a long period of no use, fill and operate the Baby Bottle Warmer empty on a Sterilising function. **Do not submerge the Base, Power Cord or plug as there is a risk of electric shock and permanent damage to the appliance. Caution: Never select a function when there is no water in the Water Bath. Only use when water is in the Water Bath. Too little water may affect the life of the Baby Bottle Warmer.** Always shake the bottle/stir the food to avoid hot spots. Check the temperature before serving, failure to do so will result in a **risk of scalding baby**.



1 Wash the Lid and Rack with warm, soapy water and rinse thoroughly. Clean all surfaces of the Base, including inside the Water Bath with washing up liquid and a soft, damp cloth. Note: Do not use sharp, abrasive or aggressive cleaning agents, bleach, or scouring pads to clean the Baby Bottle Warmer. The use of such cleaning implements may affect the life of the Baby Bottle Warmer.

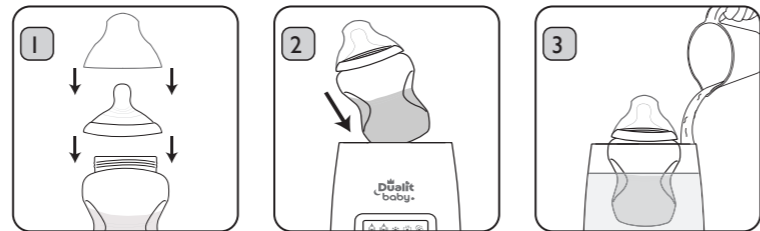
2 Fill the Water Bath with water. See table below for amounts and fit the Rack and Lid.

Sterilisation Water Bath Fill Level	
Single Bottle Warmer	Double Bottle Warmer
45ml of water	90ml of water

3 Repeatedly press the Menu button until the Sterilising icon illuminates with a red flashing light, then press the Start/Stop/Standby button. The icon light will turn solid. The cycle will finish when the light turns off and the beep sounds 3 times.

MILK WARMING/FAST MILK WARMING/FOOD WARMING AND DEFROSTING

Always remove the bottle/jar from the Baby Bottle Warmer immediately at the end of the cycle to prevent the food/milk from overheating. **Risk of scalding. Caution:** When using the Fast Milk Warming function always check selected bottle volume before starting the cycle, to prevent the food/milk from overheating. **risk of scalding.** Bottle/jar and Water Bath will be hot, **risk of scalding.** Always check milk and food temperature before giving to your baby.

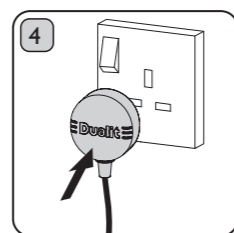


1 Fill bottle/jar with desired amount of food/milk. Note: Minimum bottle fill 2oz (56ml). Fit the bottle teat and lid. **Warning:** Remove lid from any food jar before heating.

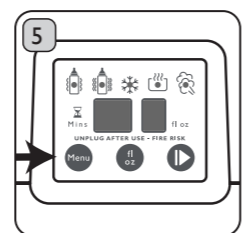
2 Place bottle/jar into the Water Bath Teat facing up. Fill the Water Bath with water, level with the milk/food in the bottle/jar and fit the Lid. The Rack is not required for heating milk/food.

3 Fill the Water Bath with water, level with the milk/food in the bottle/jar and fit the Lid. The Rack is not required for heating milk/food.

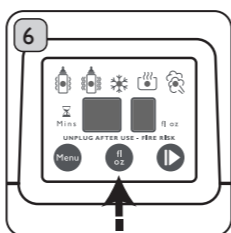
Water Bath Minimum Fill Level	
Single Bottle Warmer	Double Bottle Warmer
120ml of water minimum	240ml of water minimum



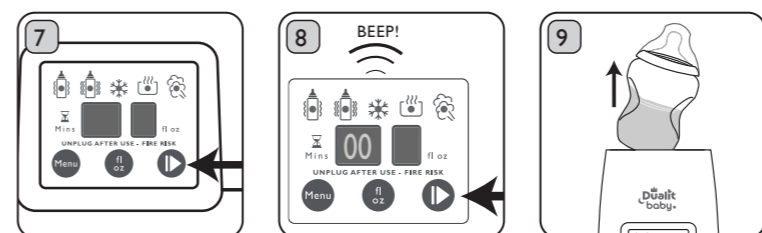
4 Plug in the Baby Bottle Warmer to the mains. The appliance will beep to inform you that it is in standby mode.



5 Repeatedly press the Menu button until the chosen icon illuminates with a red flashing light.



6 Repeatedly press the Volume button to select the volume of milk/food being warmed. The volume is in Fl Oz. If using 2 bottles, select the volume of 1 bottle/container.

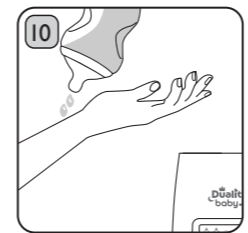


7 Press the Start/Stop/Standby button to start the cycle. Note: Never start a function without water in the Water Bath, this may affect the life of the Baby Bottle Warmer.

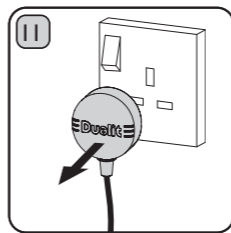
8 When the function ends the Baby Bottle Warmer will beep three times. **Caution:** Pressing the Start/Stop/Standby button will end the heating cycle early and the milk/food will not be heated to the correct temperature.



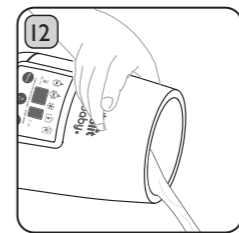
9 Immediately remove the bottle/jar from the Baby Bottle Warmer at the end of the cycle to prevent overheating the food/milk. **Caution:** During Fast Milk Warming function, bottle/jar and Water Bath will be hot; **risk of scalding.** Always check milk/food temperature before giving to your baby.



10 Always check the temperature before serving. Test milk by placing drops onto the inside of your wrist. Test food by placing a metal spoon to the bottom of the container, wait 5 seconds and withdraw the spoon, rest the spoon against your lip. Failure to do so will result in a **risk of scalding baby**.



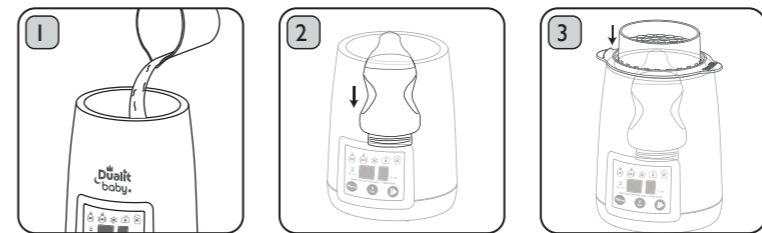
11 Unplug Baby Bottle Warmer when not in use.



12 Tip away water from the Water Bath after each use and follow cleaning instructions. **Note:** wait 15 minutes before starting the next function cycle.

STERILISING

Before sterilising, ensure all items have been cleaned with warm, soapy water to remove all milk/food residue. Rinse thoroughly. Separate all items into individual components.

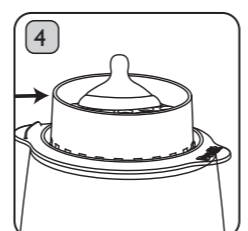


1 With the Lid and Rack removed, pour water into the Water Bath. See table below for amounts. **Caution:** Adding too much water will slow the steam sterilisation process, too little water will result in unsterilised items and may affect the life of the Baby Bottle Warmer. **Do not fill above the top of the Element Cover.**

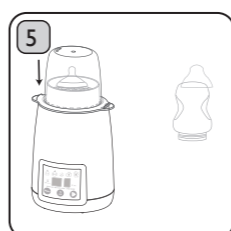
2 Place the milk bottle facing downwards inside the Water Bath.

3 Position the Rack over the bottles, on top of the Base.

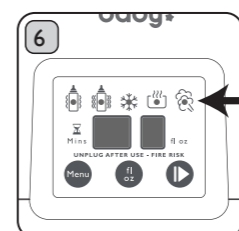
Sterilisation Water Bath Fill Level	
Single Bottle Warmer	Double Bottle Warmer
45ml of water	90ml of water



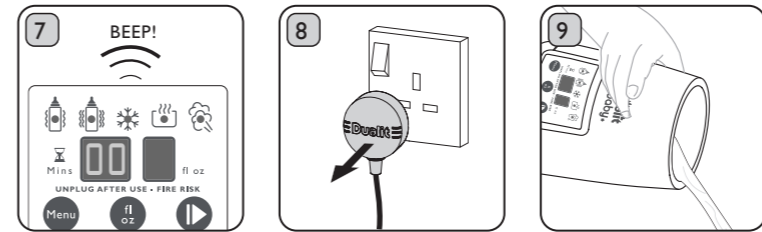
4 Place bottle collars, teats followed by Lids on top.



5 Position the Lid on top of the Rack and plug into mains. **Caution: Ensure that the lid is correctly positioned, failure to do so may affect sterilisation performance.**



6 Use the **Menu button** to select Sterilising function. Press the **Start/Stop/Standby button** to begin the cycle. **Note:** You do not need to amend the volume for this cycle.



7 The Baby Bottle Warmer will beep 3 times to indicate the cycle has finished.

8 Unplug from the mains when not in use. Do not remove the items from the Water Bath for at least 5 minutes due to residual heat.

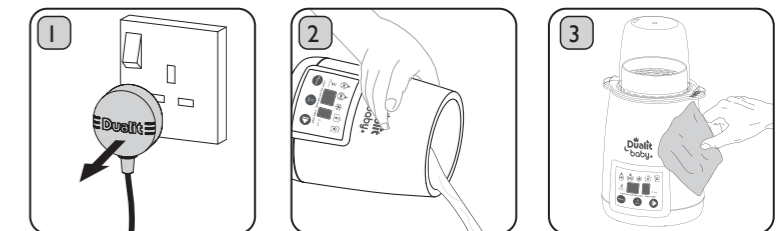
9 Once the Baby Bottle Warmer has cooled down, remove the items, pour away remaining water, and follow cleaning instructions.

Items left within the Baby Bottle Warmer will remain sterile for up to 24hrs, providing the Lid is not removed. **Note:** wait 15 minutes before starting the next function cycle.

CLEANING AND CARE

Before cleaning make sure the machine is switched off, unplugged and allowed to cool. Dualit recommends cleaning your baby bottle warmer after every use.

Do not submerge the Base, Power Cord or plug into water or other liquid, or position under a water tap. Do not use sharp, abrasive or aggressive cleaning agents, bleach or scouring pads to clean the Baby Bottle Warmer. The use of such cleaning implements may affect the life of the Baby Bottle Warmer.



1 Unplug the Baby Bottle Warmer from the mains and allow to cool down completely before cleaning.

2 Remove the Lid and Rack, pouring away any excess water.

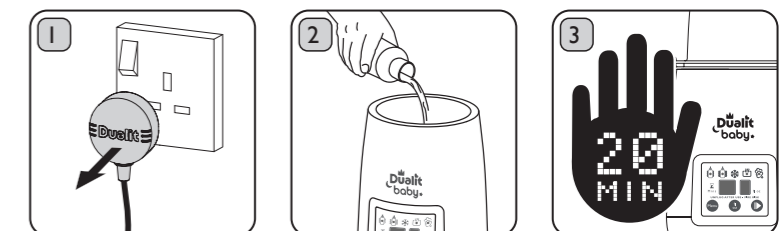
3 Clean all surfaces of the Base, including the Water Bath, Rack and Lid with mild detergent (washing up liquid) and a soft, damp cloth.

Caution: Do not use sharp articles or metal tools to touch the Element as it may cause electric shock. When not in use, clean and dry the Baby Bottle Warmer and store in a cool, dry place.

DESCALE REGULARLY

IMPORTANT NOTICE: PRODUCT FAILURE DUE TO THE BUILD-UP OF LIMESCALE IS NOT COVERED BY GUARANTEE.

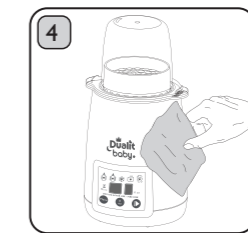
The Baby Bottle Warmer needs to be descaled regularly. As a minimum, it is recommended that you descale once a month in soft water areas, every 21 days in medium water areas and every 14 days in hard water areas. You can check your water hardness with your water provider. Wear rubber gloves. Do not use on marble surfaces. Do not put descaler bottle on work surfaces. Wipe descaler bottle after use.



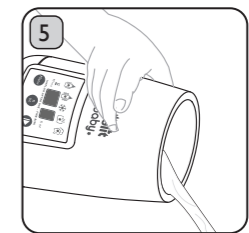
1 Unplug the Baby Bottle Warmer from the mains and allow to cool down completely before descaling.

2 Pour 100ml of just-boiled water into the Water Bath, then add 50ml of Kirock Espresso & Coffee Machine Descaler. This can be purchased on dualit.com. **Caution: Be aware of splashing. Risk of scalding and chemical inhalation.**

3 Leave to stand for 20 minutes.



4 Pour away solution, wipe around the surface with a cloth and rinse well by pouring clean water into the Water Bath.



5 Rinse the Water Bath a minimum of three times. **Failure to do so can cause injury. Do not start any function with descaling solution in it.**

Tip - To minimise limescale build up in your Baby Bottle Warmer; empty the Baby Bottle Warmer after each use, do not allow water to stand in the Baby Bottle Warmer overnight, use filtered water instead of tap water.

TROUBLESHOOTING

POSSIBLE CAUSE(S)	SOLUTION(S)
MY MILK/FOOD IS TOO HOT OR COLD	
You may have selected the incorrect volume for the milk/food being heated.	Ensure that the volume selected is the same as the volume of milk/food being heated.
	Ensure you have selected the correct function.
	If using the Double Milk warmer, ensure the volume in both bottles/jars is equal.
	Your Bottle Warmer may need descaling. Always descale regularly, see Descalation Section for how to descale.
MY BOTTLE WARMER ISN'T TURNING ON WHEN I PLUG IT IN	
Your Baby Bottle Warmer is in standby mode.	Press the Start/Stop/Standby button to light up the Control Panel.
Heating cycle may have been started before water was added to the Water Bath.	Allow to cool for half an hour and try again. Always ensure the correct amount of water is in the Water Bath before starting a cycle.



TO REPLACE FUSE, REMOVE SILVER LABEL TO ACCESS SCREW.