

**RÜWC**  
**POWERSPORTS**

**SINGLE APX**  
**POLARIS SCRAMBLER**  
**850/1000**

**INSTALLATION MANUAL**

# THE IMPORTANT STUFF!

## Single APX - Polaris Scrambler 850/1000 10120830



- Read all instructions before installation.
- Ensure your vehicle is turned off, and engine and exhaust system are cold.
- Use the necessary protective gear; gloves, goggles etc.
- Make sure your vehicle is on flat, stable ground.
- Check your local laws and regulations to make sure the part you are installing is in compliance and legal for the type of use you intend.
- **After your first ride, re-tighten all bolts!**

### Parts Included

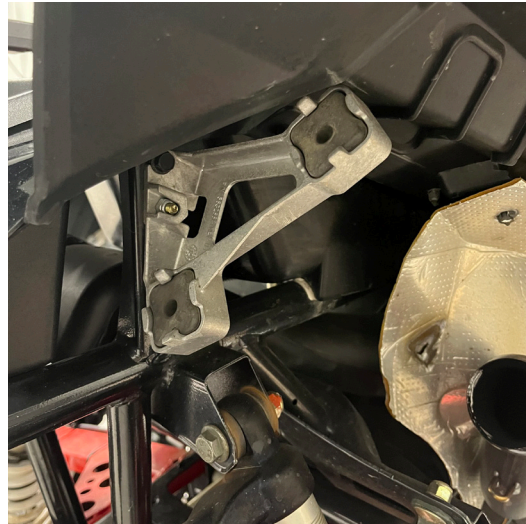
- 1x Top Clamp
- 1x Bottom Clamp
- 2x Aluminum Pin
- 1x Exhaust Spring 60mm
- 1x Exhaust Spring 75mm
- 1x Exhaust Gasket
- 1x Graphite Gasket
- 4x M5x16 Cylinder Screw A4
- 4x Washer M5 A2
- 5x Hex Flange Screw
- 1x Exhaust Bracket
- 2x M8x20 Cylinder Screw
- 2x Washer 8.4
- 2x M6x25 Cylinder Screw
- 2x M6 Nut

**Need help? Got a question?**  
**Get in touch at [support@rjwc.se](mailto:support@rjwc.se) or your closest RJWC Dealer.**



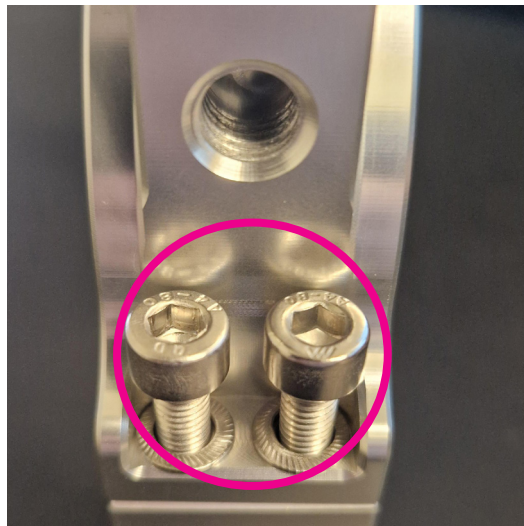
### STEP 1.

To remove the stock exhaust, detach the two springs that hold the stock exhaust in place.



### STEP 2.

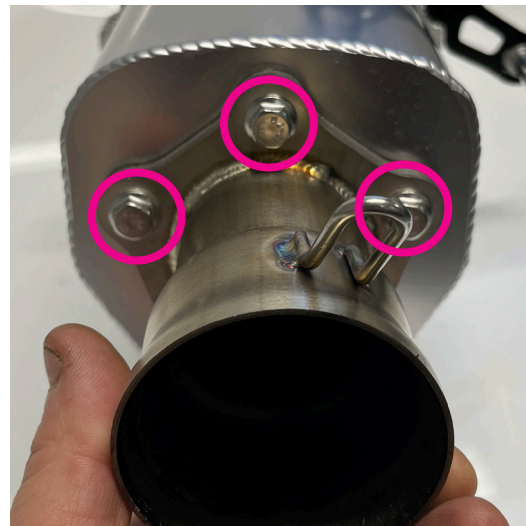
With the springs removed, you should now be able to slide the exhaust from the rubber fastenings.



### STEP 3.

Unpack the 2x Aluminum Exhaust Clamps and place these onto the APX cans.

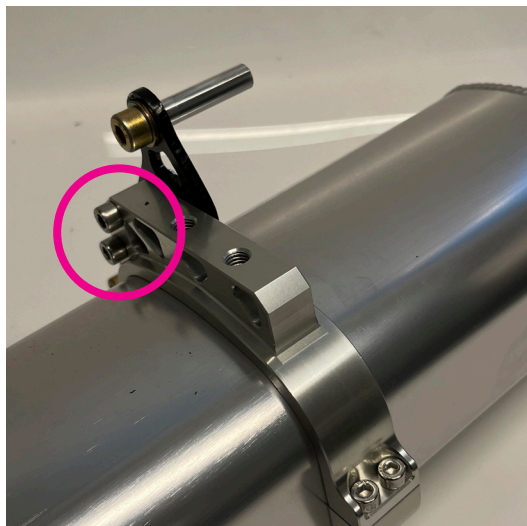
Use 2x M5 Cylinder Screws and 2x M5 Lock Washers on each side to connect the two clamps together.



### STEP 4.

Place the Exhaust Gasket between the pipe and the APX can and use 5x M6 Flange Screws to secure the pipe to the APX can.

# SINGLE APX



**STEP 5.**

Use 2x M6x25 Cylinder Screws and 2x M6 Nuts to connect the Black Exhaust Bracket to the Top Exhaust Clamp.

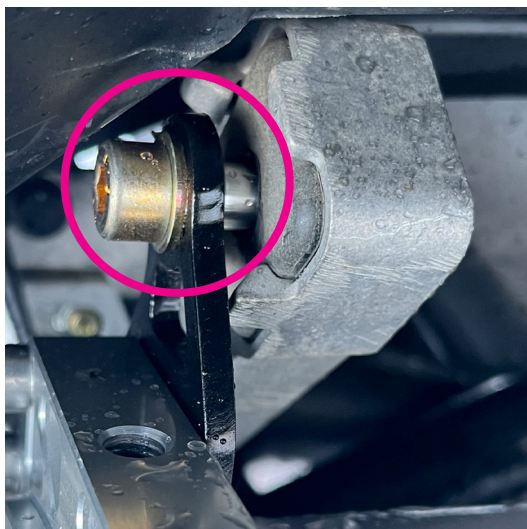
Use the image in Step 4. as a reference for how this should look.



**STEP 6.**

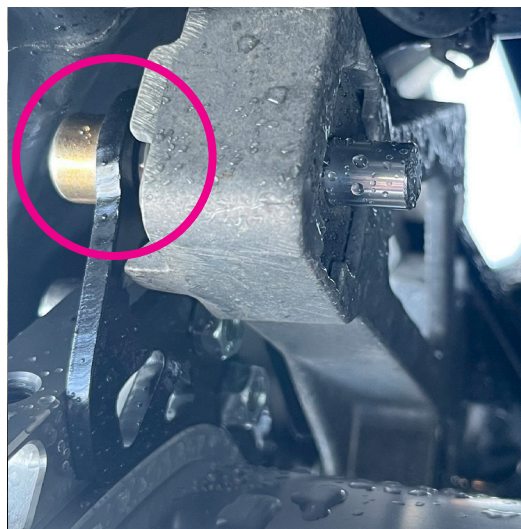
Use the above image as reference for how the APX Exhaust should look so far.

**Ignore the Cylinders and Bolts in the top of the Black Exhaust Bracket for now.**



**STEP 7.**

Insert the 2x Aluminum pins into the mounted rubber fastenings in the frame of the bike. These will be used to mount the APX exhaust.



**STEP 8.**

Place 1x 8.4 Washer onto 1x M8x20 Cylinder Screw and fasten these into the two Aluminum pins that have been inserted into the rubber fastenings.



### **STEP 9.**

Place the Graphite Gasket between where the pipes will meet.

Use the 1x Exhaust Spring 60mm to connect the bottom pipe hooks, and use the 1x Exhaust Spring 75mm to connect the top pipe hooks.



### **STEP 10.**

You have now completed the installation of the Exhaust.

**Don't forget to retighten all bolts after your first ride!**