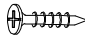





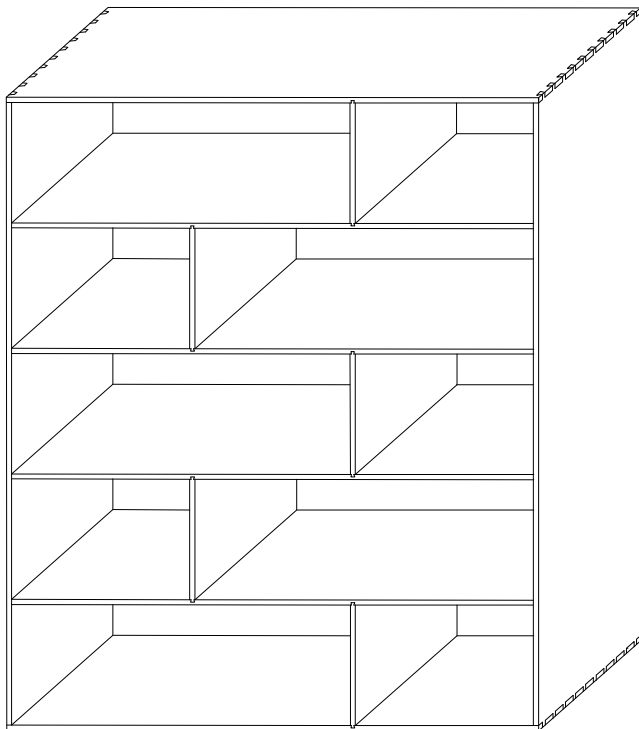
B2C FURNITURE

MODERN HARDWOOD FURNITURE

STAX HARDWOOD STAGGERED BOOKCASE ASSEMBLY INSTRUCTIONS

PARTS LIST		
No.	HARDWARE	Qty.
A	PANHEAD M3.5 X 16MM 	59
B	MERLOT 	1

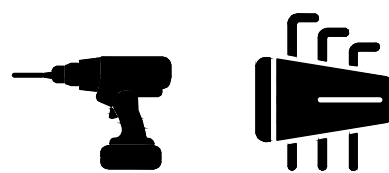
PARTS LIST		
No.	PART LIST FOR FRAME	Qty.
1	TOP PANEL	1
2	BOTTOM PANEL	1
3	SIDE PANEL	2
4	SHELF	4
5	MIDDLE PANEL	5
6	BACK PANEL	1



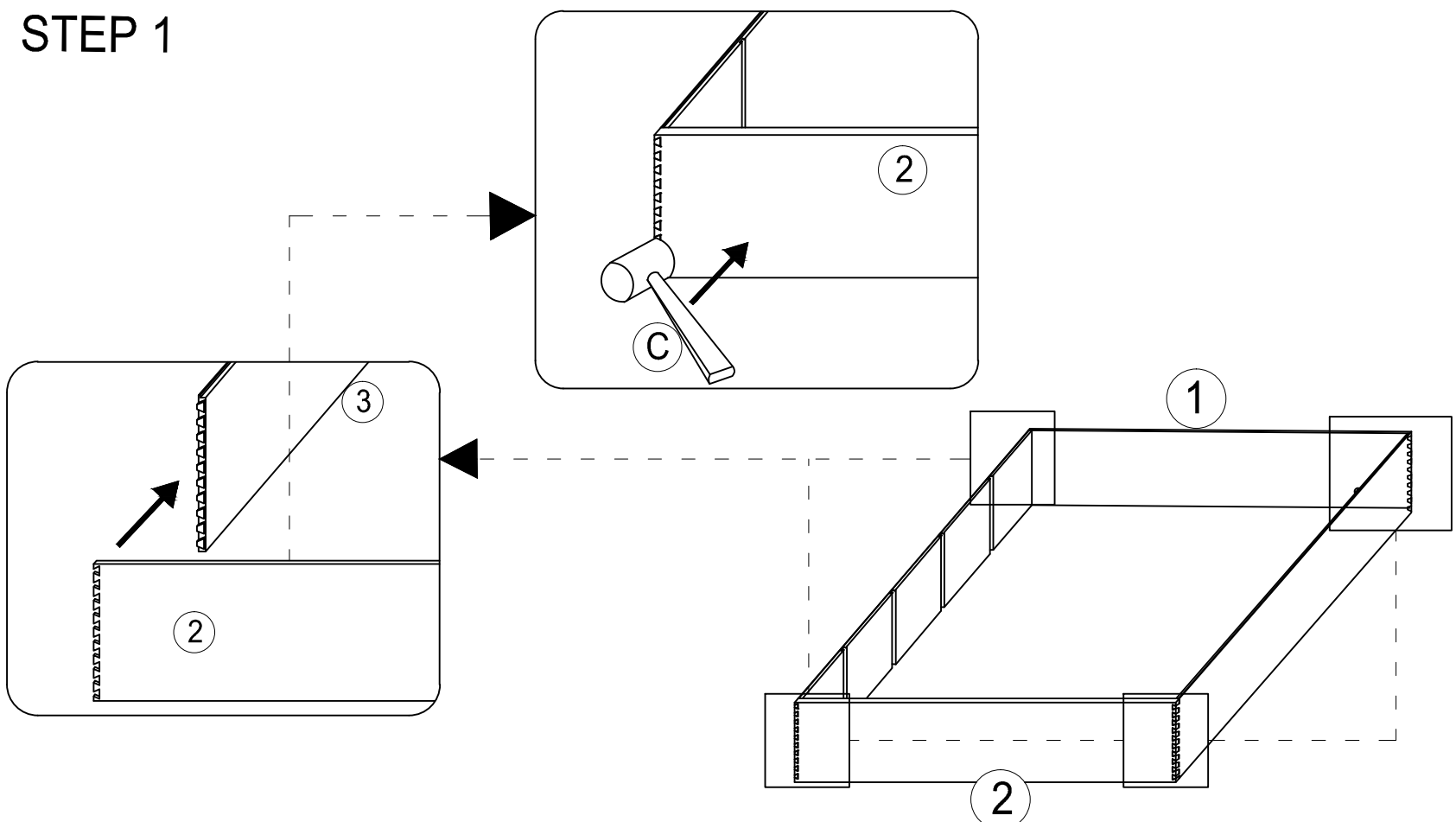
Assembly Tips:

Remove hardware from box and sort by the size parts and hardware for frame and drawers to check that all hardware and parts are present before assembling. Follow instructions below in proper sequence to ensure fast, easy and correct assembly.

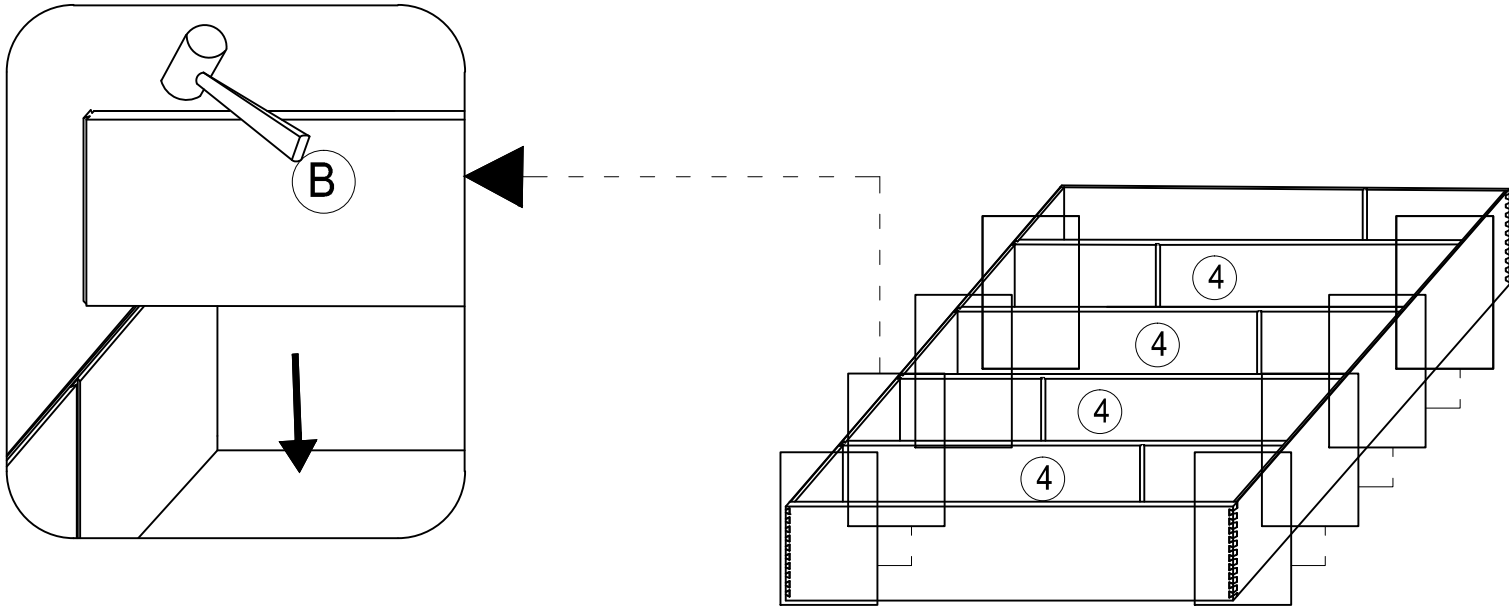
Recommended for assembly:



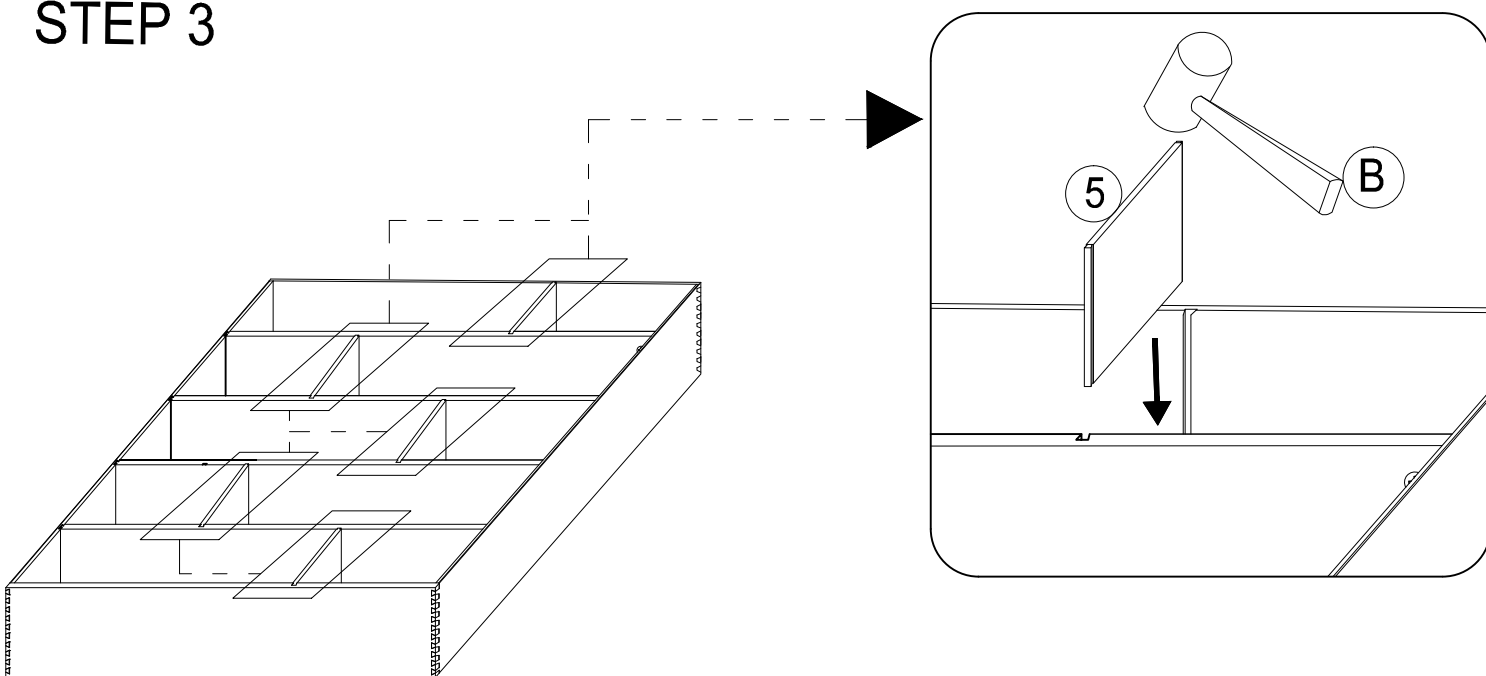
STEP 1



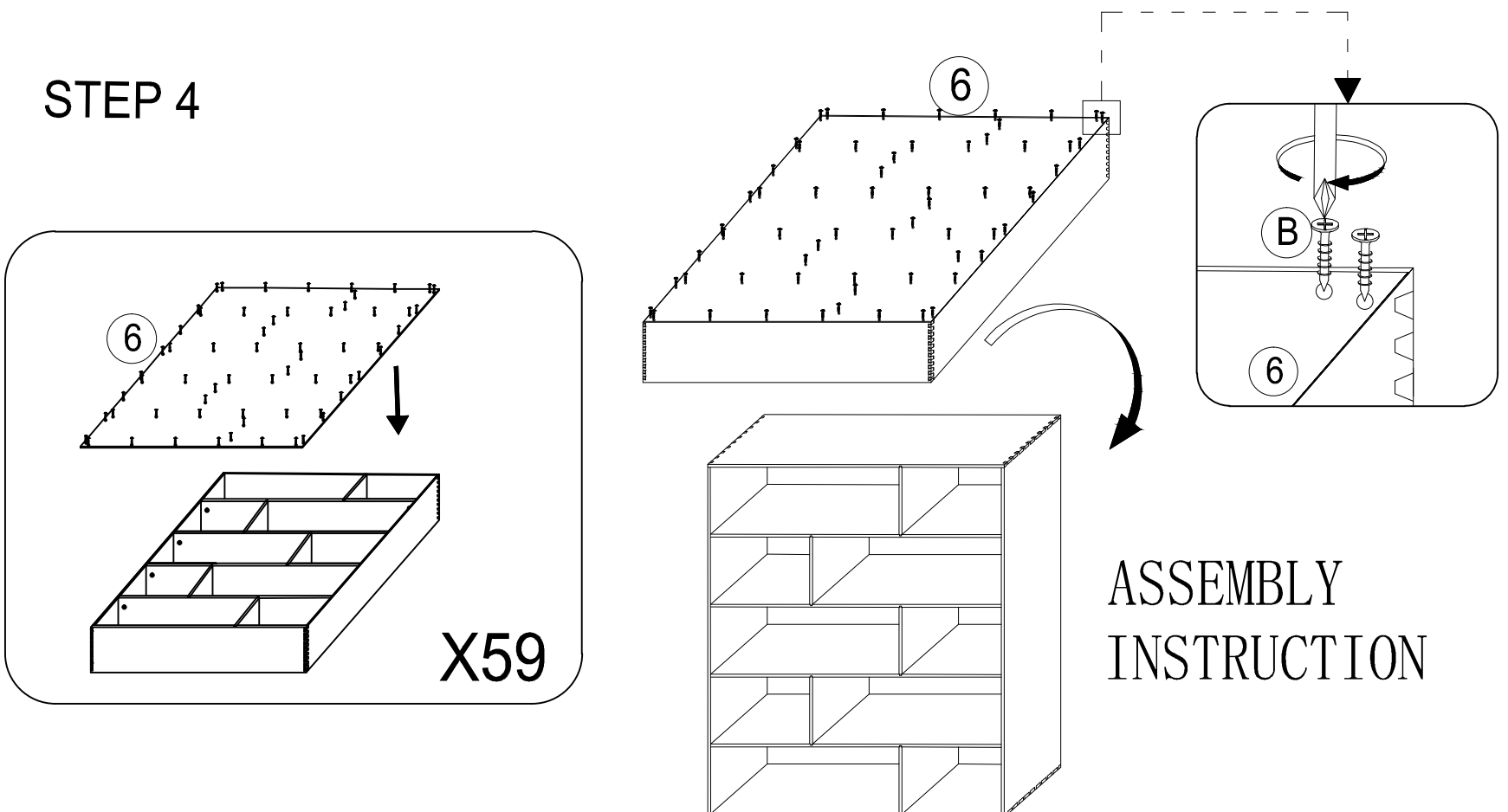
STEP 2



STEP 3



STEP 4



X59

ASSEMBLY
INSTRUCTION