



Brio

HYDRATION INNOVATION



Step-by-Step Guide to

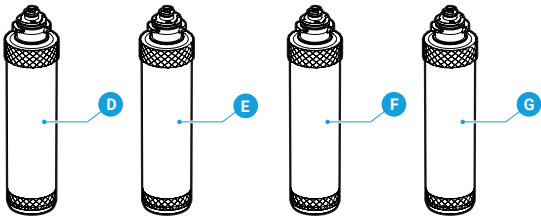
Changing Your 4-Stage Filter



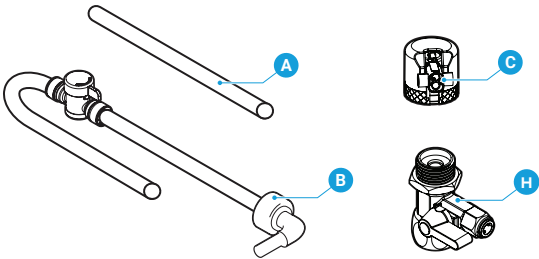
Thank you for choosing Brio

You'll enjoy consistent access to pure, refreshing water when you replace your filters in a timely manner. On average, the sediment, pre carbon, ultrafiltration, and post carbon filters should be replaced every 6 to 12 months. However, depending on the quality of your municipal water and frequency of cooler use, filter lifespan may vary.

Materials Included



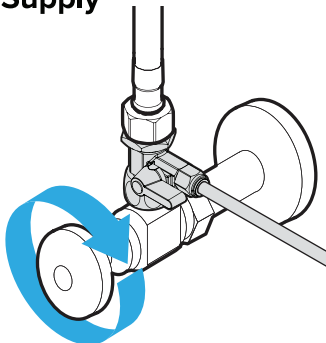
Materials Needed



Part	Description	Quantity
A	Filter Flushing Tube	1
B	Shut-Off Valve Tube (7 ft.)	1
C	Filter Housing (for Filter Flushing)	1
D	Sediment Filter	1
E	Pre Carbon Filter	1
F	UF Membrane	1
G	Post Carbon Filter	1
H	Feedwater Adapter	1

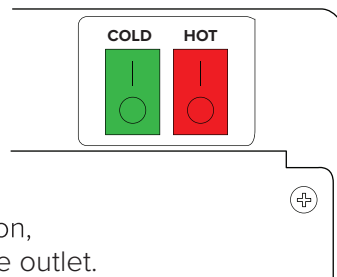
Step 1 : Turn Off Water Supply

Locate the cold water supply and shut off the flow of water.



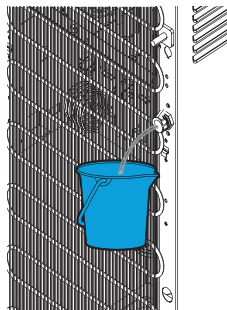
Step 2 : Turn Off Cooler

Turn off the switches located on the back of the unit. Once the switches have been flipped to the off position, unplug the unit from the outlet.



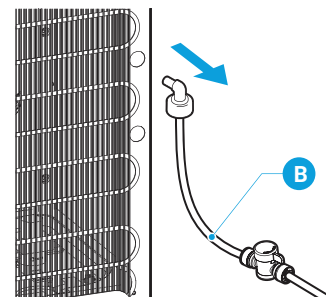
Step 3 : Drain Cooler Tank

Place a large bucket beneath the drain outlet located on the back of the dispenser and remove the drain cover, begin to drain water.



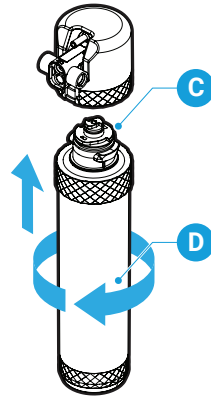
Step 4 : Remove Inlet Line

Once the cooler has been drained, unplug the inlet line. As a precaution, place a towel underneath the inlet line to absorb any potential water left in the cooler.

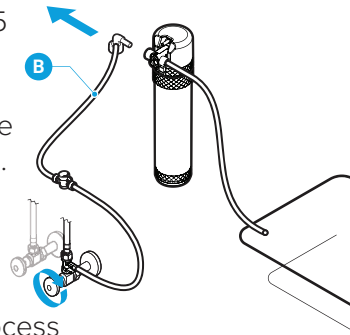


Step 5 : Flush New Filters

- A. Connect the filter (D) to the filter housing (C) by twisting the filter (D) clockwise.



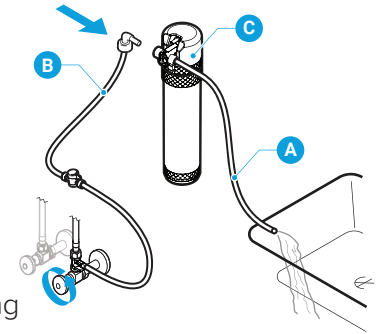
- D. Turn on cold water supply and flush filter for a minimum of 5 minutes. The recommended rate is 1.5-3 gallons of water (about 10 minutes) or until the water is clear in appearance.



- E. Shut off water at the source and remove tip of shut-off valve tube (B) from filter housing (C). Repeat process with remaining filters, excluding the reverse osmosis membrane.

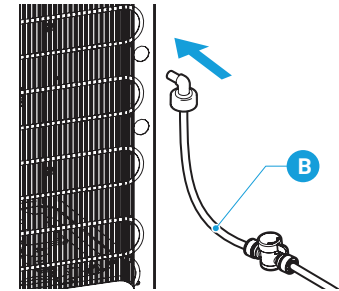
- B. Connect the tip of the shut-off valve tube (B) to the left side of the filter housing (C).

- C. Connect the filter flushing tube (A) to the right side of the filter housing (C) and lay the open end of the flushing tube (A) over a sink or receptacle to collect water.



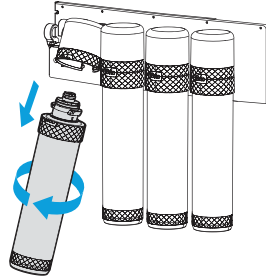
Step 6 : Re-Install Inlet Line

Connect the tip of the shut-off valve tube (B) into the water inlet hole on the back of the dispenser. Once connected, ensure the valve on the tube (B) is open.



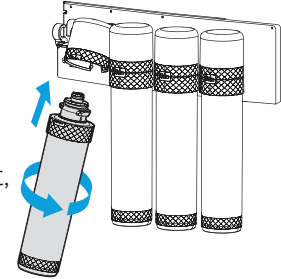
Step 7 : Remove Used Filters

With water supply off, twist each filter counterclockwise to remove from housing inside dispenser cabinet.



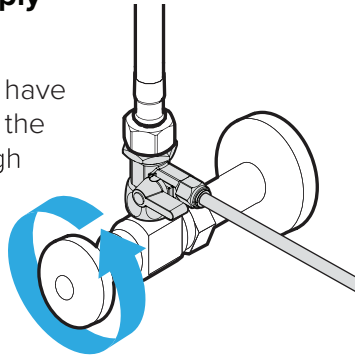
Step 8 : Install New Filters

Twist each flushed filter clockwise into filter housing. Filters are installed, from left to right, as follows: sediment, pre carbon, ultrafiltration, post carbon.



Step 9 : Turn on Water Supply

Once all the steps have been completed and all connections have been secured, turn on water at the source and allow to flow through cooler. Ensure there are no leaks at any of the connection points. When all points have been checked, allow tanks to refill, plug in cooler, and turn on heating and cooling switches.



Enjoy Your Water!





HYDRATION INNOVATION

We want you to be 100% satisfied

If you encounter any issues or have any concerns please feel free to contact us.



cs@briowater.com



+1 844-257-4103



briowater.com

Please take a moment to share your experience with us and others by leaving a product review.