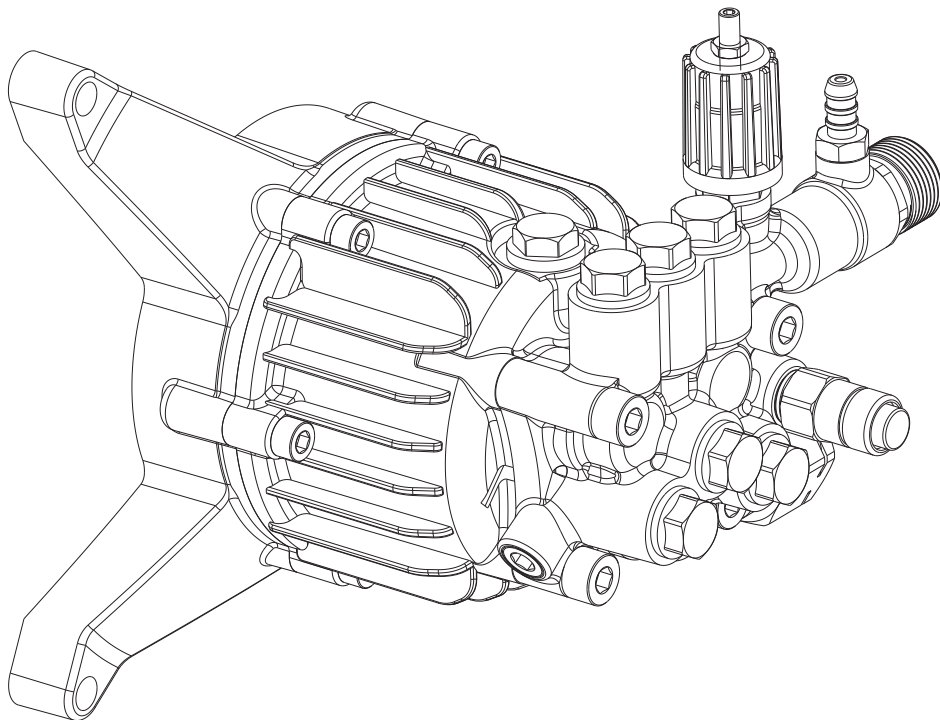


HIGH PRESSURE PUMP

WOBBLE PLATE, VERTICAL ENGINE DIRECT DRIVEN

OPERATION AND PARTS LIST MANUAL



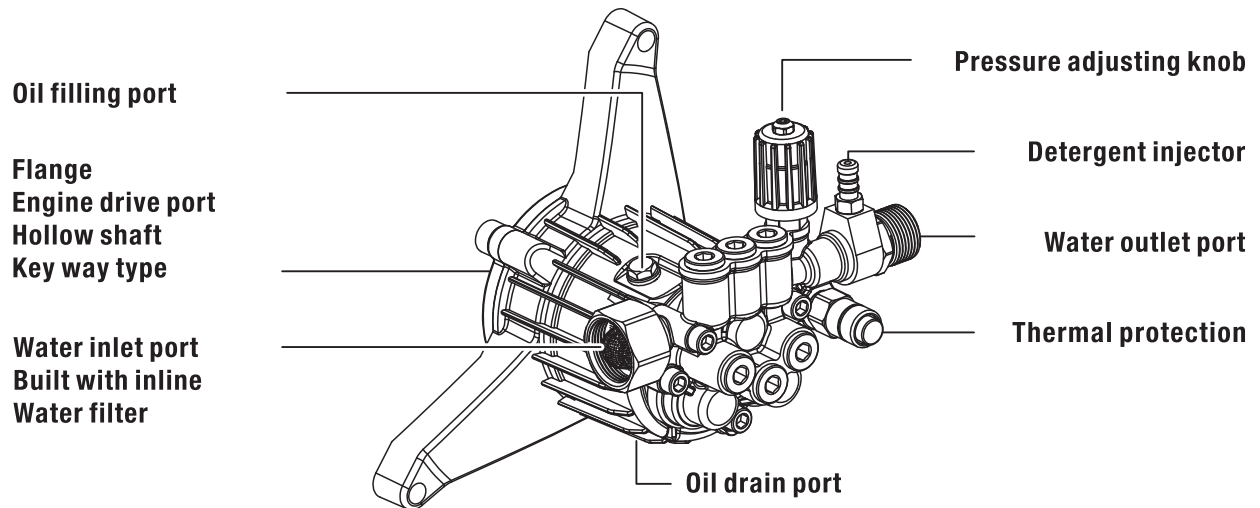
This manual contains:
IMPORTANT WARNINGS and **INSTRUCTIONS**. READ AND RETAIN FOR REFERENCE

! WARNING: To reduce the risk of injury, the user must read and understand the operators manual before using this product.

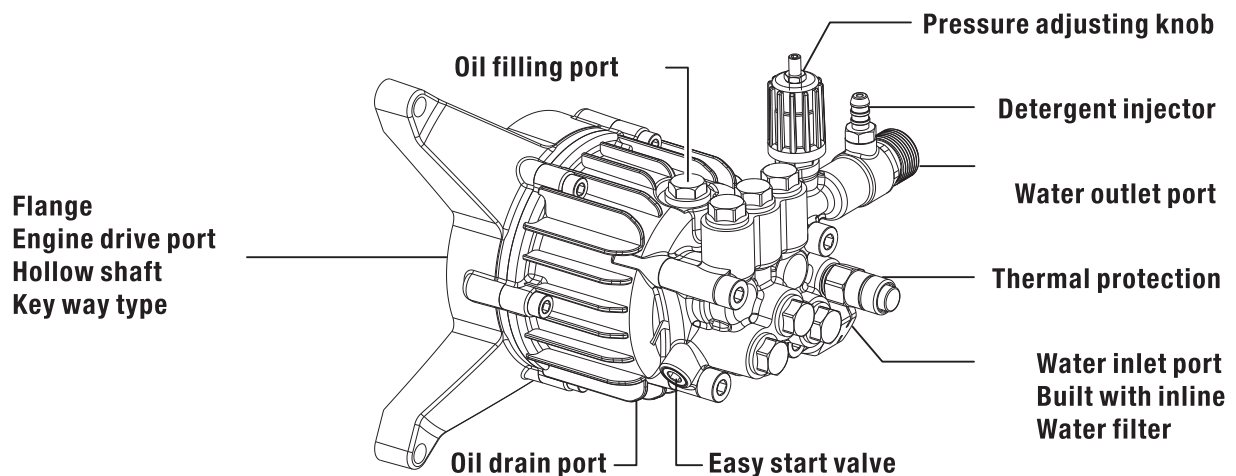
SAVE THIS MANUAL FOR FUTURE REFERENCE

PUMP DESCRIPTION

VERSION 1



VERSION 2



GENERAL SAFETY INFORMATION

1. The pump is designed to pump non-flammable or non explosive fluid, pump clean filtered water only.
2. Do not operate in or around an explosive environment. Do not operate in a confined area.
3. Always wear safety glasses or goggles and appropriate clothing.
4. Do not alter the pump from manufacturers design or exceed the specifications in speed or pressure.
5. Never point the high pressure discharge at a person, any part of the body or animals.
6. Maximum inlet water temperature is 60 C/140 F °
7. Use only components that are rated for the flow and pressure of the pump, include hose, fitting, safety valves and spray guns etc.

PUMP SPECIFICATIONS

Rating Outlet Pressure	2500PSI(172bar)
Rating Flow Rate	2.4GPM
Power Requirement	6HP
Max Inlet Pressure	90PSI(6.2bar)
Min Inlet Pressure	15PSI(1bar)
Max Inlet Water Temp.	Max 40°C/140°F
INPUT PRM	3400r/min
Crankcase Oil Capacity	100ml,SAE 10W-30 or 15W-40
Inlet Port	NPSH 3/4" -11.5
Outlet Port	M22x1.5-Ø15
Driving Port	Høllow type, 22.23mm, 4.8mm Keyway

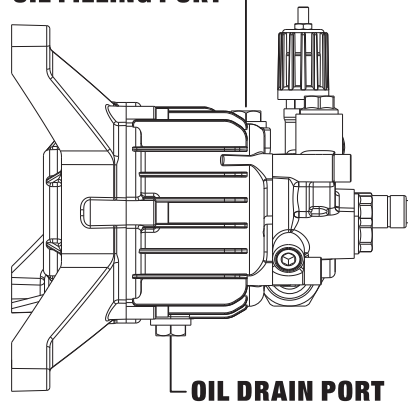
BEFORE USE

1. Unscrew and remove the oil plug.
2. Place the oil collection tray (not supplied) under the plug
3. Unscrew the plug, and allow the used oil to drain from the pump shell into the oil collection tray.

NOTE: Drain the oil when the pump is warm, this will ensure the oil flows out quicker.

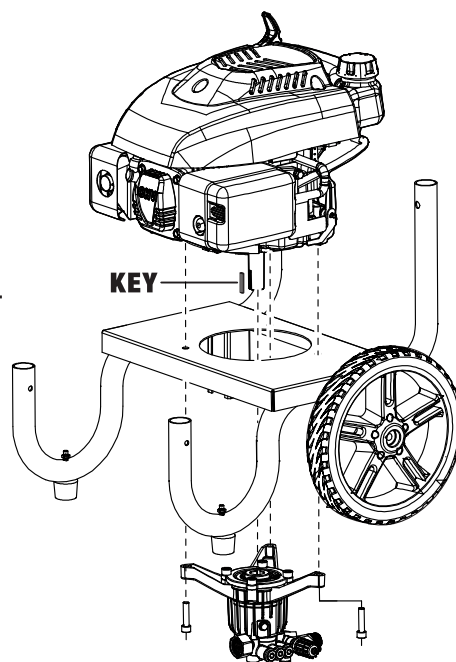
4. Replace the plug and its ring seal.
5. Fill the recommended oil SAE30.
6. Replace the oil filler cap.
7. The pump filled with the oil at factory, change it after frist 20hrs use, and successively 50hours

OIL FILLING PORT



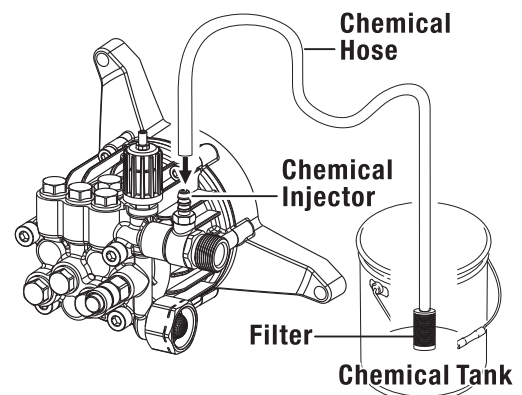
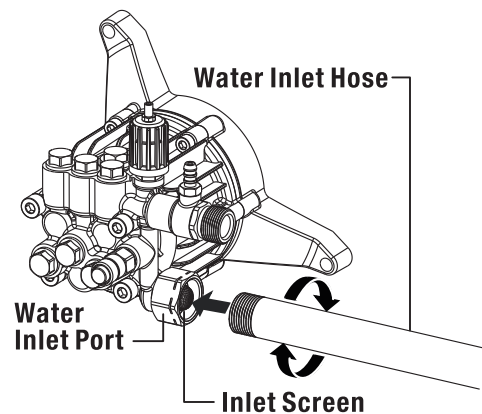
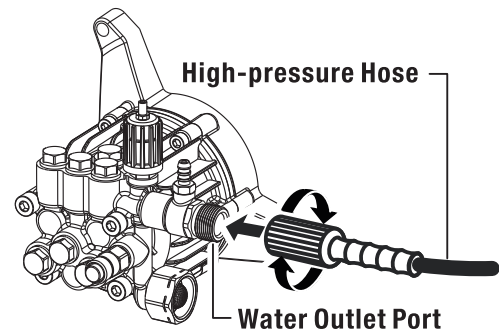
INSTALLATION

1. Before install the pump make sure the size of the Shaft, Key and Key-way, and Bolt Circle are same of the pump and engine.
2. Install the shaft key into the key-way and apply a light coating of anti-seize on the engine shaft and key
3. Align the two key ways and push the pump completely onto engine.
4. Install all three bolts through the pump flange and tighten on to engine evenly.



PREPARING BEFORE USE

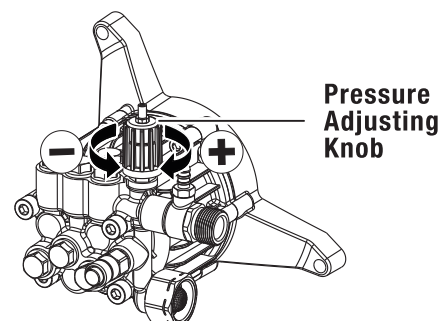
1. Attach the end of the high pressure hose to the pump outlet port. Simply thread the collar onto the threads of the water outlet, and tighten by hand.
2. Before you connect your garden hose to the water inlet, inspect the inlet screen. Clean the screen if it contains debris or have it replaced if damaged.
3. The water supply garden hose must have an inside diameter of at least 5/8". If the hose is more than 100 ft. long, the diameter must be at least 3/4".
4. Always use a flexible rubber hose for your water supply. Do not use rigid piping.
5. Run water through your garden hose for 30 seconds to clean out any debris. Connect the garden hose to the water inlet port. Tighten by hand.
6. Press the braided chemical hose over the chemical injector on the pump.
7. Submerge the suction strainer connected to the chemical hose into a bucket containing the chemical solution.



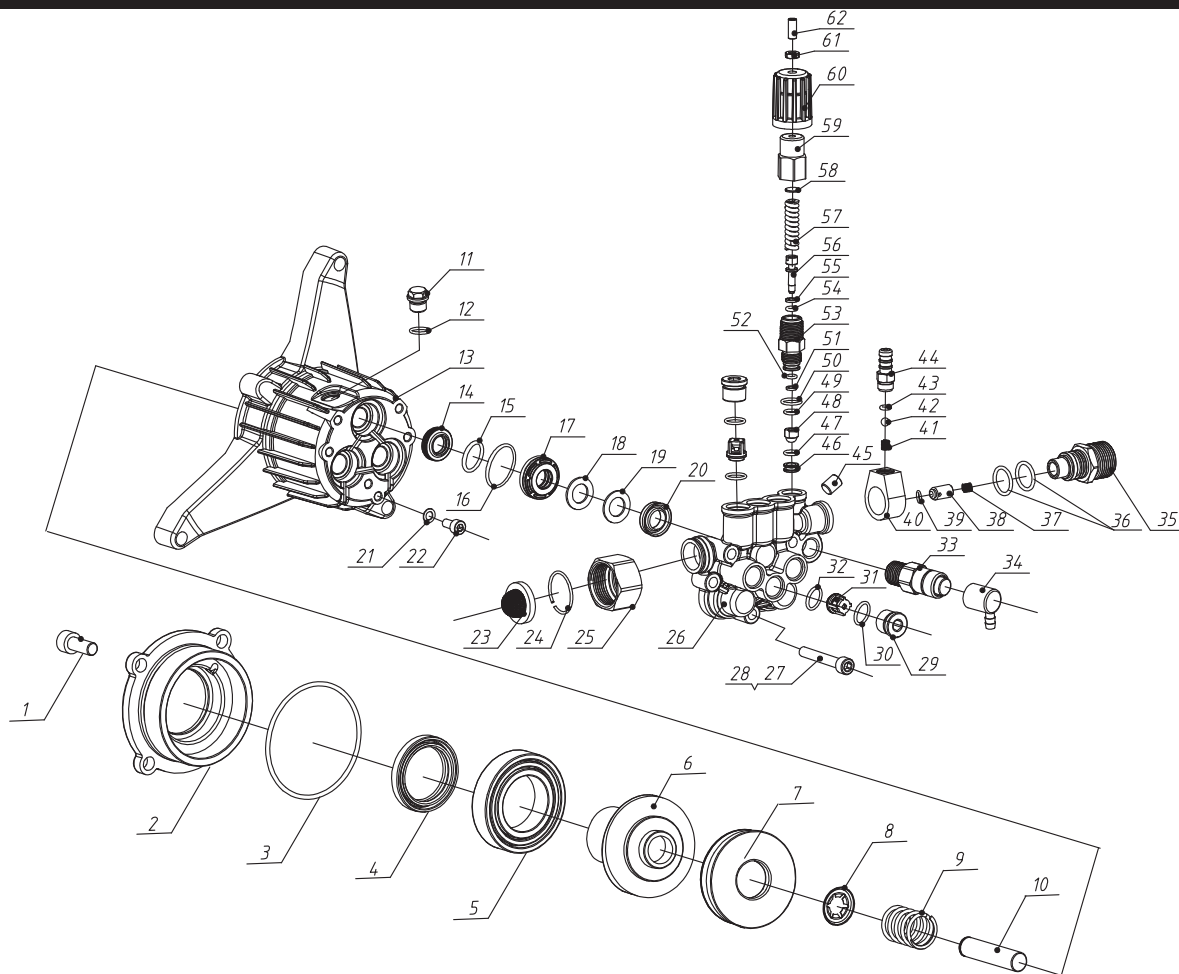
ADJUSTING THE PUMP PRESSURE

1. Available for the pump that provide the features with Pressure Adjusting Knob.
2. Increase or decrease spray pressure by turning pressure control knob clockwise or counterclockwise.

NOTE: Do not over tighten the knob, it will causing the engine over loading and stop.



EXPLODED VIEW



PARTS LIST

REF NO. DESCRIPTION

- 1 Socket Head Screw M8*20
- 2 Cover, Wobble Plate
- 3 O-Ring (67.95*2.62)
- 4 Oil Seal
- 5 Rear Bearing
- 6 Wobble Plate
- 7 Front Bearing
- 8 Spring Disk
- 9 Spring
- 10 Plunger
- 11 Oil Plug
- 12 O-Ring (8*1.8)
- 13 Pump Housing
- 14 Oil Seal (12*20*5)
- 15 O-Ring (12*2)
- 16 O-Ring (22.4*1.78)
- 17 Retain Ring
- 18 Washer
- 19 Compaction Flake
- 20 Water Seal
- 21 O-Ring

REF NO. DESCRIPTION

- 22 Bolt M6*10
- 23 Water Inlet Filter
- 24 Clip
- 25 Swivel Nut
- 26 Pump Manifold
- 27 Bolt M6*30
- 28 Bolt M6*40
- 29 Valve Plug
- 30 O-Ring (11.4*1.78)
- 31 Checking Valve
- 32 O-Ring (9.25*1.78)
- 33 Thermal Relief Valve
- 34 Guide Sleeve
- 35 Outlet Connector
- 36 O-Ring
- 37 Spring
- 38 Outlet Cone Valve
- 39 O-Ring (5*1.8)
- 40 Soap Siphon Body
- 41 Spring
- 42 Ball

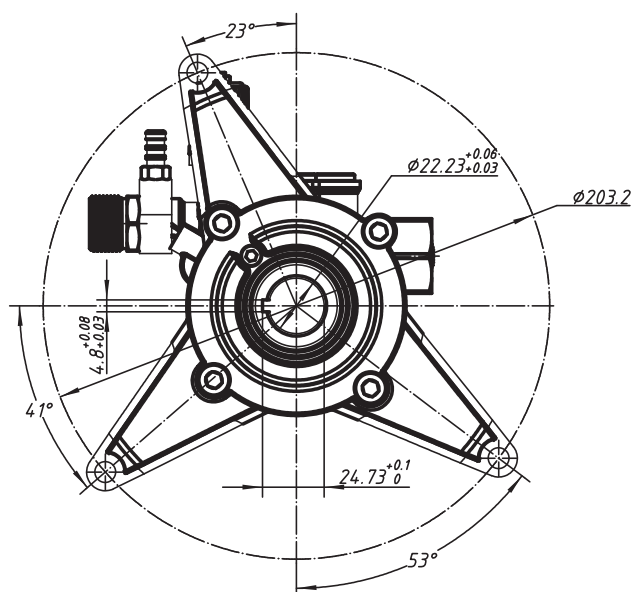
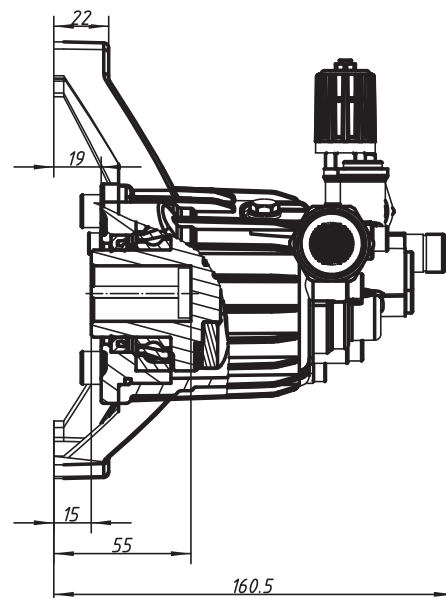
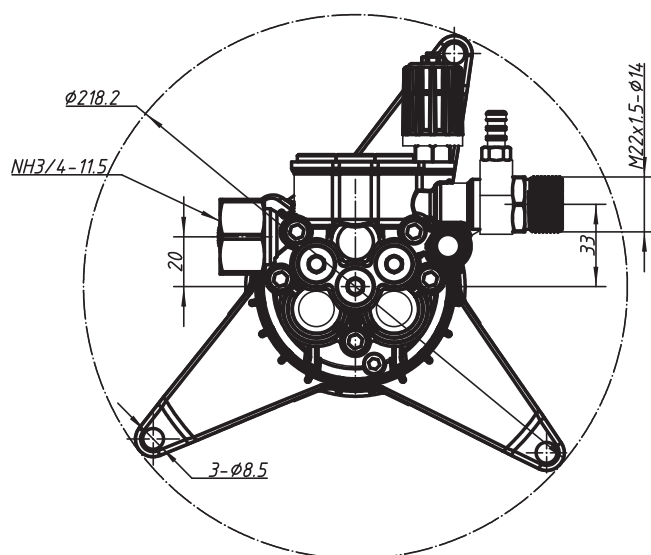
REF NO. DESCRIPTION

- 43 O-Ring (4.47*1.78)
- 44 Chemical Hose Barb
- 45 Bolt M8*6
- 46 Backwater Valve Port
- 47 O-Ring(6.5*1.5)
- 48 Bullet
- 49 O-Ring(6.5*1.5)
- 50 O-Ring (10*1.5)
- 51 Backup Ring
- 52 O-Ring (4*1.5)
- 53 Valve Body
- 54 O-Ring (4*1.8)
- 55 Backup Ring
- 56 Valve
- 57 Spring
- 58 Washer
- 59 Knob
- 60 Knob Cap
- 61 Nut M5
- 62 Bolt M5*14

TROUBLE SHOOTING GUIDE

Problem	Probable Cause	Solution
Pump will not draw Chemicals	<ol style="list-style-type: none"> 1. Spray wand not set to low pressure.. 2. Chemical filter clogged. 3. Chemical screen not in chemical. 4. Chemical solution too thick. 5. Pressure hose too long 6. Chemical build-up in chemical injector. 	<ol style="list-style-type: none"> 1. See "Using Spray Wand" section. 2. Clean Filter. 3. Ensure end of chemical hose is fully submerged into chemicals. 4. Dilute chemical. Chemical solutions should have same consistency as water. 5. Lengthen water supply hose instead of pressure hose. 6. Have parts cleaned or replaced by authorized dealer.
No or low pressure (after period of normal use).	<ol style="list-style-type: none"> 1. Worn seal or packing. 2. Worn or obstructed valves. 3. Worn unloader piston. 4. Worn E-Z start valve. 	Have parts cleaned or replaced by authorized dealer.
Water leaking at pump.	<ol style="list-style-type: none"> 1. Loose connections. 2. Piston packings worn. 3. Worn or broken O-rings. 4. Pump head or tubes damaged from freezing. 	<ol style="list-style-type: none"> 1. Check and replace O-ring 2. Tighten hose connection. 1. Tighten connections. 2. Have parts cleaned or replaced by authorized dealer. 3. Have parts cleaned or replaced by authorized dealer. 4. Have parts cleaned or replaced by authorized dealer.
Oil leaking at pump	<ol style="list-style-type: none"> 1. Oil seals worn. 2. Loose drain plug. 3. Worn drain plug O-ring. 4. Worn fill plug O-ring. 5. Pump overfilled. 6. Incorrect oil used. 7. Vent plug clogged. 	<ol style="list-style-type: none"> 1. Have parts cleaned or replaced by authorized dealer. 2. Tighten drain plug. 3. Inspect and replace O-ring. 4. Inspect and replace O-ring. 5. Check for correct amount. 6. Drain and refill with correct type and amount of oil. 7. Clean vent plug. Use air hose to free it of blockage. If problem persists, replace vent plug.
Pump pulsates	Nozzle obstructed.	See "Using Spray Wand" section.

DIMENSIONS



PACKING LIST

1. Pump x1
2. Operating Manual x1
3. Detergent Injection Hose/Filter Kit x1