

Compatible with the following Zoe strollers:

THE TWIN+

(TWIN-V1 and newer – not compatible with XL2 models)

Compatible with the following car seats:

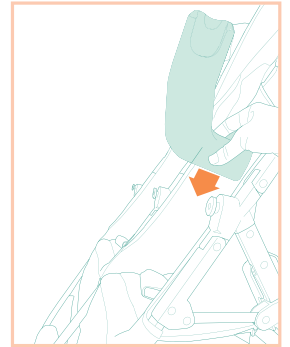
NUNA PIPA & PIPA RX MAXI COSI MICO 30 & MICO LUXE

***Please note, compatibility is subject to change. These recommendations are based on product safety testing and are the only car seats for which we can guarantee a safe and secure fit.*

Attaching the Car Seat Adapters:

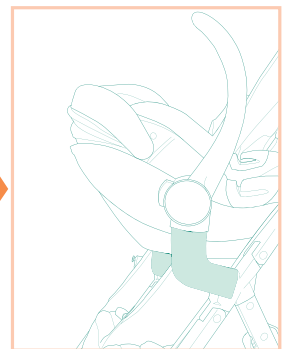
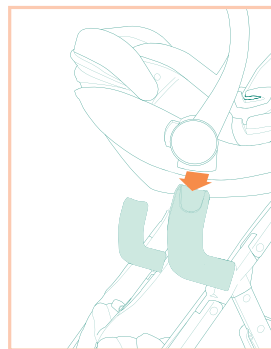
To install the adapters, first, recline the seat back. Then, slide the adapters on to the connection points until you hear an audible click. The rough sides of the adapters should be facing each other (inward), with the smooth sides facing outwards. Pull up on the adapters to ensure they are locked in place.

For optimal fit, we also recommend removing the canopy on the side of the stroller you will be using the car seat. Press the button in each canopy clip and slide out to remove each side of the canopy, then unzip the top for full removal.



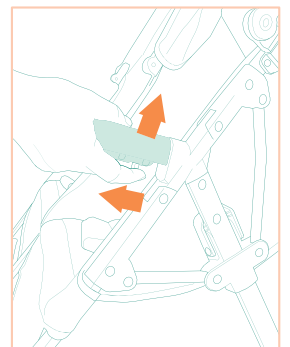
Adding the Car Seat:

Place the car seat into the car seat adapters and gently, but firmly press down until you hear an audible click. Pull up on the car seat carrying handle to ensure each side of the car seat is safely locked into place before stroller use.



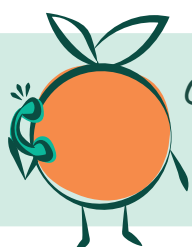
To Remove the Car Seat Adapters:

Press the red tab at the base of each adapter and lift off the connectors.



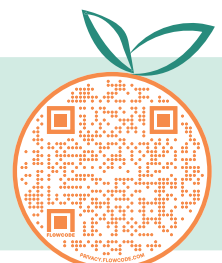
WARNING

Do not use when a child is in the stroller seat. Only use this adapters with a designated compatible car seat model. Do not use adapters if they have been damaged in any way.

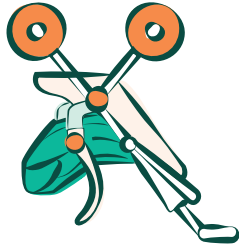


Got questions?

Check out our help center:



Car Seat Adapter Instructions



zobaby.com

Zoe
4710 Belle Oaks Drive
Suite 104
Charlotte, NC 28217