

Compatible with the following Zoe strollers:

**THE TERRA DOUBLE (XJ2)**

**THE TOUR+**

(XL1-V2 and newer)

**THE TWIN+**

(TWIN-V1 and newer – not compatible with XL2 models)

Compatible with the following car seats:

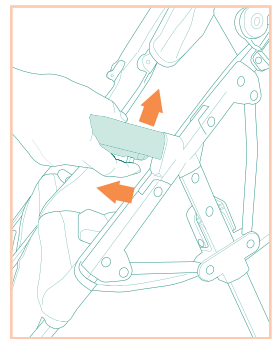
**CHICCO KEYFIT 30 & 35  
GRACO SNUGRIDE LITE 35 LX  
& LX INFANT**

*\*\*Please note, compatibility is subject to change. These recommendations are based on product safety testing and are the only car seats for which we can guarantee a safe and secure fit.*

## Attaching the Car Seat Adapter:

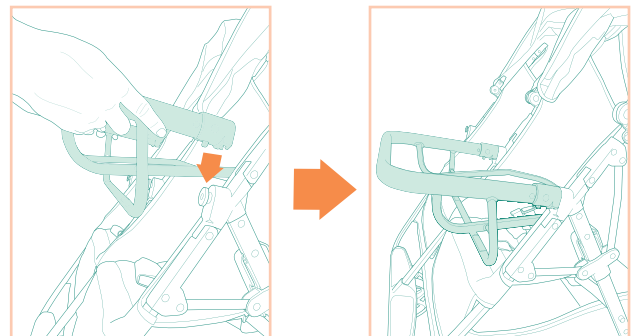
To install the adapter, first, recline the seat back. Then, push the red tabs in and slide the adapter on the round connectors until you hear a click. Pull up on the adapter to ensure it is locked into place.

For optimal fit, we also recommend removing the canopy on the side of the stroller you will be using the car seat. Press the button in each canopy clip and slide out to remove each side of the canopy, then unzip the top for full removal.



## Adding the Car Seat:

Set the car seat into the car seat adapter and gently, but firmly press down until the car seat is locked into place. Pull up on the car seat carrying handle to ensure the car seat is safely locked into place before stroller use.

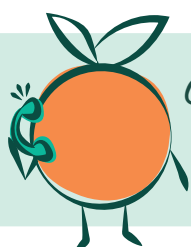


## To Remove the Car Seat Adapter:

Press both red tabs and lift the adapter off the connectors.

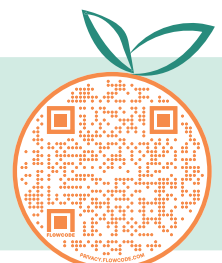
### **WARNING**

Do not use when a child is in the stroller seat. Only use this adapter with a designated compatible car seat model. Always remove adapter before folding the stroller. Do not use adapters if they have been damaged in any way.

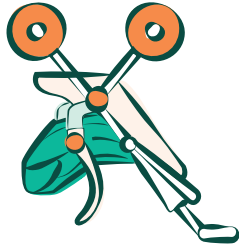


Got questions?

Check out our help center:



# Car Seat Adapter Instructions



[zobaby.com](http://zobaby.com)

Zoe  
4710 Belle Oaks Drive  
Suite 104  
Charlotte, NC 28217