

B. PARTS LIST

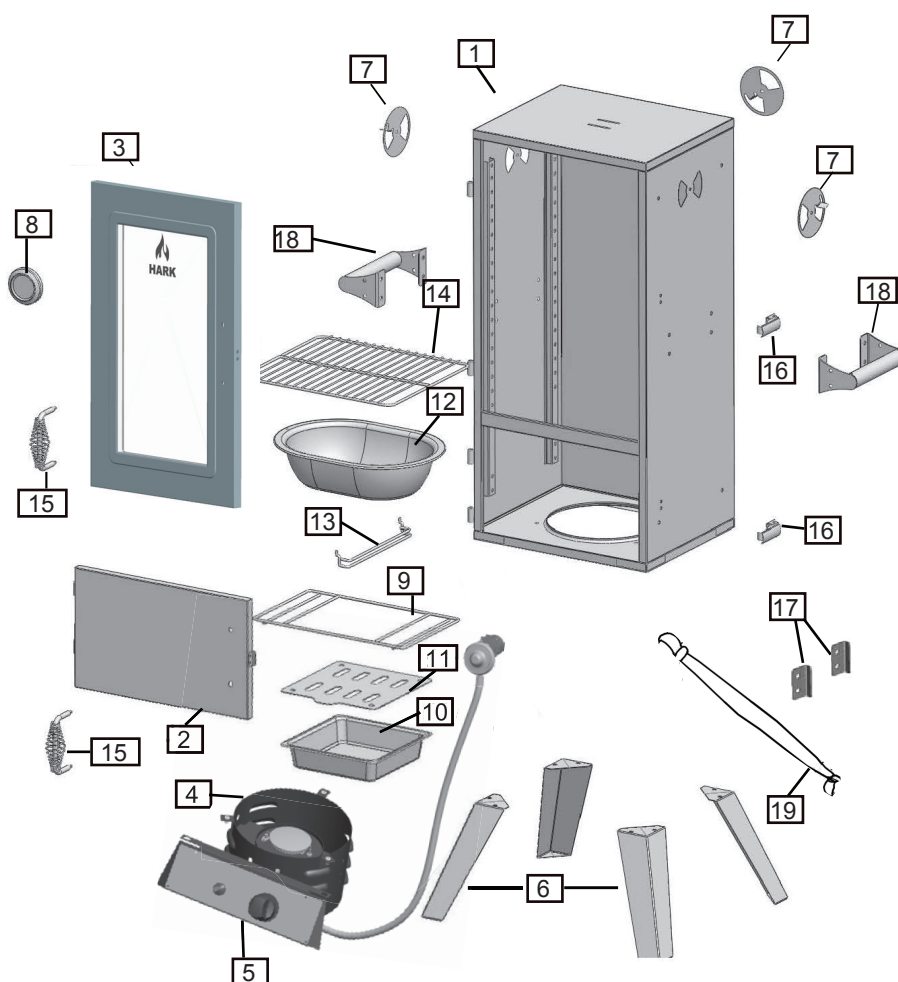
Read all safeguards and assembly instructions before assembling and operating your smoker.

Before assembling your new smoker, unpack all parts from the box. Carefully remove all packing material and lay out all the parts for easy access and identification. Do not discard the carton or packaging until your smoker is fully assembled and operating to your satisfaction.

In order to properly assemble your smoker, you will only need two tools:

- Philips head screwdriver
- shifter or 3/8" & 7/16" wrench (tools not included)

Be sure to have a friend help. The smoker is heavy and must be moved around during assembly and before use. To use your smoker immediately after assembly, have an LP gas cylinder filled by an authorised LP dealer or cylinder exchange center.



Product Dimensions: 59cm(w) x 53cm(d) x 110cm(h)

Also, be sure to have your choice of flavouring wood readily available. (LP gas cylinder and flavouring wood are not included).

For further assistance, including missing or damaged parts, call 1300 799 787.

Primary Components

Item	Description	Qty	Item	Description	Qty
1	Smoker Cabinet	1	11	Wood Chip Box Lid	1
2	Smoker Door - Lower	1	12	Water Bowl	1
3	Smoker Door - Upper	1	13	Grid Track	10
4	Burner Chamber Assembly	1	14	Cooking Rack	3
5	Control Panel Assembly	1	15	Door Handle	2
6	Smoker Leg	4	16	Door Latch	2
7	Adjustable Damper	3	17	Door Latch Plate	2
8	Temperature Gauge	1	18	Side Handle	2
9	Wood Chip Box Rack	1	19	Gas Bottle Restraint Strap	1
10	Wood Chip Box	1			