

TAILGATE BAR INSTALL

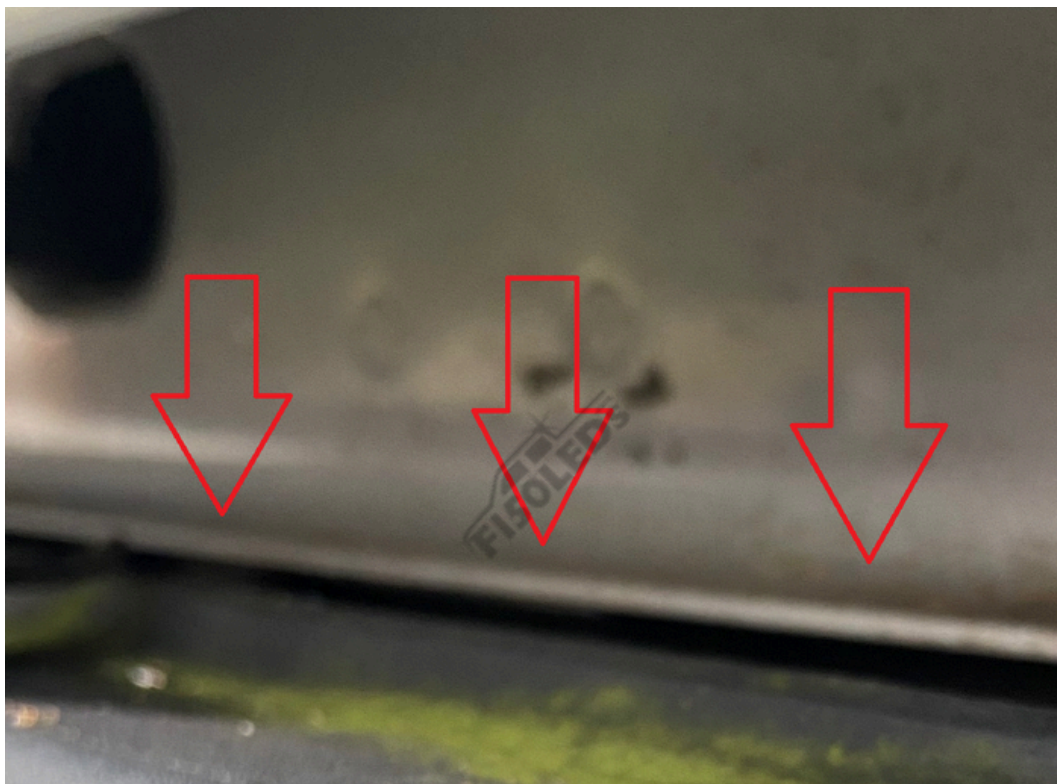
Section A is for the drilling installation method, Section B is for the 3M installation method.

STEP 1

If your truck is a Super Duty, you will need to remove the bumper that is under the tailgate using a size T20 Torx Driver. If installing on an F-150 skip to step 2.

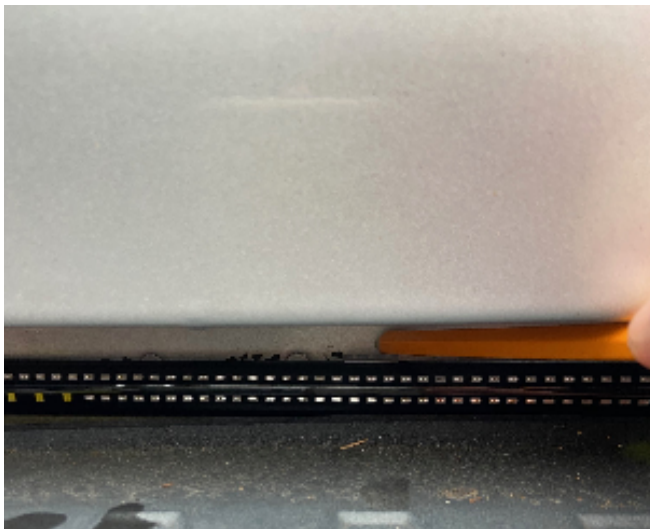


We recommend resting the tailgate bar on the bottom lip seen in the photo below.



STEP 2a

Lay out the included clips then clip them onto the back of the tailgate bar, once they are attached hold the bar on the mounting location then use a pencil to mark the top of the clips.



STEP 3a

Once all of the clips are marked, remove the clips from the tailgate bar then hold the clips on the mark then use a pencil or sharpie to mark a hole. (this mark will be drilled out)



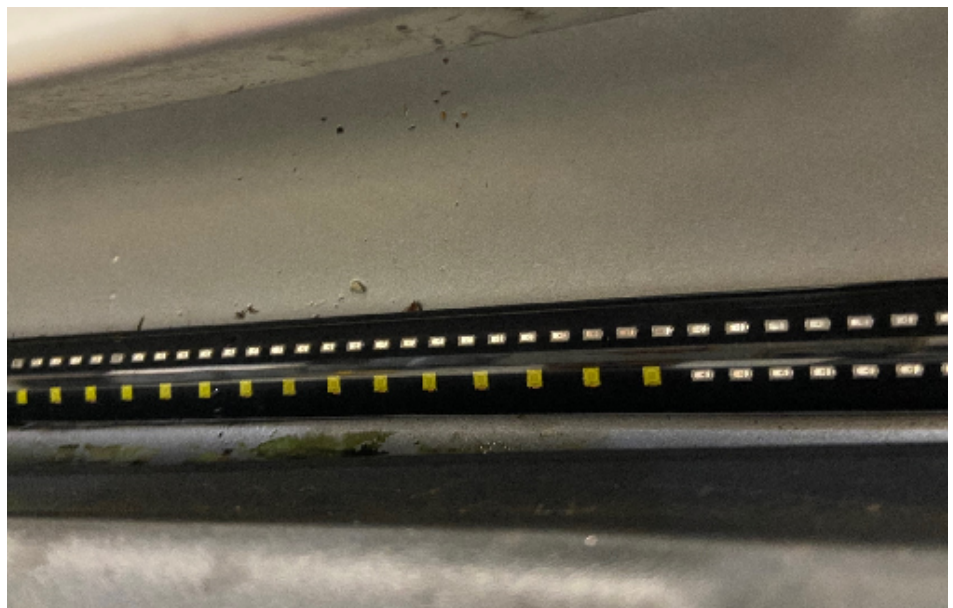
STEP 4a

Use a size 1/8 drill bit to drill a pilot hole in the truck where the holes were marked.



STEP 5a

Use the included screws to mount the clips to the truck then push the tailgate bar into the clips.



STEP 6A

Use a size 8mm socket or wrench to remove both taillight assemblies.



STEP 7A

Run the cluster of four wires coming from the tailgate bar to the drivers side taillight, then run the green wire at the end of the wiring under the bumper and up into the passengers side taillight.

Please refer to the wiring guide section to see the color wires to connect to for your truck.

STEP 1B

Peel the protective covering off of the back of the included 3M and place it on the back of the tailgate bar.

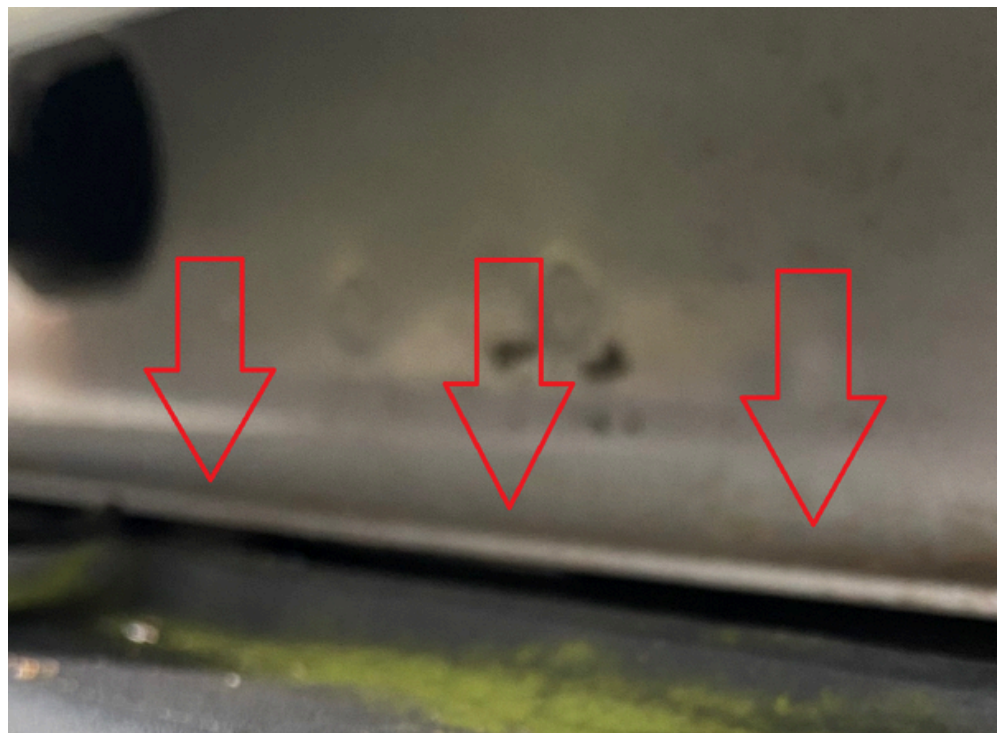


STEP 2B

Remove the back of the 3M coverings and mount the tailgate bar onto the truck.



We recommend resting the tailgate bar on the bottom lip seen in the photo below.



STEP 3B

Use a size 8mm socket or wrench to remove both taillight assemblies.



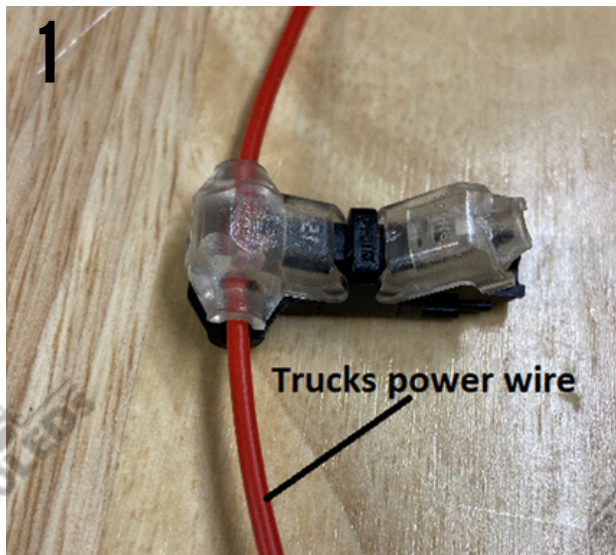
STEP 4B

Run the cluster of four wires coming from the tailgate bar to the drivers side taillight, then run the green wire at the end of the wiring under the bumper and up into the passengers side taillight.

Please refer to the wiring guide section to see the color wires to connect to for your truck.

How to use T-Clips:

Step 1: slide the power wire from the truck through the opening in the image below, then use pliers and clamp the opening so the wire is securely connected



Step 2: Insert the power wire from the F150LEDS.com kit into the hole in the opening seen in the image then use pliers and clamp the opening so the wire is securely connected



Tailgate Bar Wiring:

Below shows what each wire functions as that comes from our tailgate bar

Yellow Wire - Driver side turn signal

Brown Wire - Parking light

White Wire - Reverse Light

Black Wire - Ground

Green Wire - Passenger side turn signal



Text for support: 706-214-2618

Visit our site to chat: www.F150LEDs.com
or email CustomerSupport@F150LEDs.com

Wiring Guide:

Yellow Wire- Driver side turn signal
Brown Wire- Parking light
White Wire- Reverse Light
Black Wire- Ground
Green Wire- Passenger side turn signal

2024+ F150 and Raptor

Factory LED Taillights with Bliss

Driver Side:

- Driver Signal - (white/green)
- Ground - (black/yellow)
- Reverse - (green/brown)
- Running - (green/orange) *can also use trailer harness (brown wire)
- ***If rear turn signals are amber
 - Brake (requires tailgate bar adapter) - (white/red)

Passenger Side:

- Passenger signal - (Grey with purple tracer OR white)

Factory Halogen Taillights with Bliss

Driver Side:

- Driver Signal - Pin 1 (white/green)
- Ground - Pin 7 (black/yellow)
- Reverse - Pin 6 (green/brown)
- Running - Connect to trailer harness (Brown Wire)

Passenger Side:

- Passenger Signal - Pin 1 (grey/violet)

(If the halogen wires do not match up with your trucks wiring please refer to the Factory LED with bliss section above)

Yellow Wire-Driver side turn signal
Brown Wire- Parking light
White Wire- Reverse Light
Black Wire- Ground
Green Wire- Passenger side turn signal

2021 - 2023 F150 AND RAPTOR

Factory Halogen Taillights without BLISS

Driver side:

- **Park Lamp – PIN2 (violet/green) or connect to the parking light wire in your trailer harness**
- **Driver signal – PIN3 (grey/orange)**
- **Reverse – PIN4 (green/brown)**
- **Ground – PIN6 (Black/yellow)**

Passenger Side:

- **Passenger Signal – PIN3 (green/orange)**

Factory Halogen Taillights with BLISS

Driver side:

- **Park Lamp – PIN2 (violet/green)or connect to the parking light wire in your trailer harness**
- **Driver signal – PIN3 (grey/orange)**
- **Reverse – PIN6 (grey/brown)**
- **Ground – PIN4 (Black/yellow)**

Passenger Side:

- **Passenger Signal – PIN3 (green/orange)**

Factory LED Taillights with BLISS

Driver side:

- **Park Lamp – PIN10 (violet/green) or connect to the parking light wire in your trailer harness**
- **Driver signal – PIN1 (grey/orange)**
- **Reverse*** - PIN4 (green/brown)**
- **Ground – PIN3 (black/yellow)**

Passenger Side:

- **Passenger Signal – PIN1 (green/orange)**
- ***Brake-Pin 2 (White/Green) (requires signal adapter)**

Yellow Wire- Driver side turn signal
Brown Wire- Parking light
White Wire- Reverse Light
Black Wire- Ground
Green Wire- Passenger side turn signal

2018-20 F150 & 2017+ RAPTOR

Factory halogen Taillights without BLISS

Driver side:

- **Park Lamp – PIN4 (blue/gray) or connect to the parking light wire in your trailer harness**
- **Driver signal – PIN1 (grey/orange)**
- **Reverse – PIN2 (green/brown)**
- **Ground – PIN6 (Black/yellow)**

Passenger Side:

- **Passenger Signal – PIN1 (green/orange)**

Factory LED Taillights without BLISS

Driver side:

- **Park Lamp – PIN3 (blue/gray) or connect to the parking light wire in your trailer harness**
- **Driver signal – PIN6 (grey/orange)**
- **Reverse – PIN4 (green/brown)**
- **Ground – PIN1 (Black/yellow)**

Passenger Side:

- **Passenger Signal – PIN6 (green/orange)**

Factory LED Taillights with BLISS

Driver side:

- **Park Lamp – PIN3 (blue/gray) or connect to the parking light wire in your trailer harness**
- **Driver signal – PIN2 (grey/orange)**
- **Reverse – PIN4 (green/brown)**
- **Ground – PIN1 (black/yellow)**

Passenger Side:

- **Passenger Signal – PIN2 (green/orange)**

Yellow Wire- Driver side turn signal
Brown Wire- Parking light
White Wire- Reverse Light
Black Wire- Ground
Green Wire- Passenger side turn signal

2015-17 F150

Factory halogen Taillights without BLISS AND Factory LED Taillights without BLISS

Driver side:

- **Park Lamp – PIN3 (blue/gray) or connect to the parking light wire in your trailer harness**
- **Driver signal – PIN6 (grey/orange)**
- **Reverse – PIN4 (green/brown)**
- **Ground – PIN1 (Black/yellow)**

Passenger Side:

- **Passenger Signal – PIN6 (green/orange)**

Factory LED Taillights with BLISS

Driver side:

- **Park Lamp – PIN3 (blue/grey) or connect to the parking light wire in your trailer harness**
- **Driver signal – PIN2 (grey/brown)***
- **Reverse – PIN4 (green/brown)**
- **Ground – PIN1 (black/yellow)**

Passenger Side:

- **Passenger Signal – PIN2 (violet/orange)***

Yellow Wire- Driver side turn signal

Brown Wire- Parking light

White Wire- Reverse Light

Black Wire- Ground

Green Wire- Passenger side turn signal

2009-14 F150

Factory halogen Taillights

Driver side:

- **Park Lamp** - connect to middle wire of taillight bulb connector or connect to the parking light wire in your trailer harness
- **Driver signal** - connect to outside non-black wire of tail light bulb connector
- **Reverse** - connect to non-black wire of reverse bulb connector
- **Ground** - connect to black wire on either the turn signal or reverse bulb connector

Passenger Side:

- **Passenger Signal** - connect to outside non-black wire of tail light bulb connector

2004-08 F150

Factory halogen Taillights

Driver side:

- **Park Lamp** - connect to middle wire of taillight bulb connector or connect to the parking light wire in your trailer harness
- **Driver signal** - connect to outside non-black wire of tail light bulb connector
- **Reverse** - connect to non-black wire of reverse bulb connector
- **Ground** - connect to black wire on either the turn signal or reverse bulb connector

Passenger Side:

- **Passenger Signal** - connect to outside non-black wire of tail light bulb connector

Yellow Wire- Driver side turn signal
Brown Wire- Parking light
White Wire- Reverse Light
Black Wire- Ground
Green Wire- Passenger side turn signal

2023+ SUPER DUTY

Factory Halogen Taillights

Driver side:

- **Park Lamp – PIN2 (blue/white) or connect to the parking light wire in your trailer harness**
- **Driver signal – PIN3 (green/white)**
- **Reverse – connect to reverse bulb (non-black wire)**
- **Ground – PIN1 (black/white)**

Passenger Side:

- **Passenger Signal – PIN3 (yellow/violet)**

Factory Halogen Taillights with BLISS

Driver side:

- **Driver Signal - PIN3 Green wire with white stripe (on bottom connector)**
- **Parking Light - PIN2 Blue wire with white stripe (on bottom connector)**
- **Reverse Light - PIN3 Green wire with white stripe (on middle connector)**
- **Ground - PIN 1 Black wire with white stripe (on bottom connector)**

Passenger Side:

- **Passenger Signal – PIN3 Yellow wire with violet stripe (on bottom connector)**

Factory LED Taillights with BLISS

Driver side:

- **Park Lamp – PIN10 (blue/brown) or connect to the parking light wire in your trailer harness**
- ***Brake- PIN2 (White/Green)(requires signal adapter)**
- **Driver signal – PIN1 (gray)**
- **Reverse- PIN4 (green)**
- **Ground – PIN3 (black/green)**

Passenger Side:

- **Passenger Signal – PIN1 (green)**

Yellow Wire- Driver side turn signal
Brown Wire- Parking light
White Wire- Reverse Light
Black Wire- Ground
Green Wire- Passenger side turn signal

2020-22 SUPER DUTY

Factory Halogen Taillights without BLISS

Driver side:

- **Park Lamp** – connect to middle wire of taillight bulb connector or connect to the parking light wire in your trailer harness
- **Driver signal** – connect to outside non-black wire of tail light bulb connector
- **Reverse** – connect to non-black wire of reverse bulb connector
- **Ground** – connect to black wire on either the turn signal or reverse bulb connector

Passenger Side:

- **Passenger Signal** – connect to outside non-black wire of tail light bulb connector

Factory LED Taillights with BLISS

Driver side:

- **Park Lamp** – PIN3 (blue/gray) or connect to the parking light wire in your trailer harness
- **Driver signal** – PIN10 (green/blue)
- **Reverse**- PIN4 (green/brown)
- **Ground** – PIN8 (blue/green)

Passenger Side:

- **Passenger Signal** – PIN10 (blue/orange)
- ***Brake-Pin 2** (White/Green) (requires signal adapter)

Yellow Wire- Driver side turn signal

Brown Wire- Parking light

White Wire- Reverse Light

Black Wire- Ground

Green Wire- Passenger side turn signal

2017 - 2019 SUPER DUTY

Factory Halogen Taillights without BLISS

Driver side:

- **Park Lamp** – connect to middle wire of taillight bulb connector or connect to the parking light wire in your trailer harness
- **Driver signal** – connect to outside non-black wire of tail light bulb connector
- **Reverse** – connect to non-black wire of reverse bulb connector
- **Ground** – connect to black wire on either the turn signal or reverse bulb connector

Passenger Side:

- **Passenger Signal** – connect to outside non-black wire of tail light bulb connector
-

Factory LED Taillights with BLISS

Driver side:

- **Park Lamp** – PIN3 (blue/gray) or connect to the parking light wire in your trailer harness
- **Driver signal** – PIN2 (grey/brown)
- **Reverse**- PIN4 (green/brown)
- **Ground** – PIN8 (blue/green)

Passenger Side:

- **Passenger Signal** – PIN2 (violet/orange)

Yellow Wire- Driver side turn signal

Brown Wire- Parking light

White Wire- Reverse Light

Black Wire- Ground

Green Wire- Passenger side turn signal

1999-16 SUPER DUTY

Factory Halogen Taillights

Driver side:

- **Park Lamp** – connect to middle wire of taillight bulb connector or connect to the parking light wire in your trailer harness
- **Driver signal** – connect to outside non-black wire of tail light bulb connector
- **Reverse** – connect to non-black wire of reverse bulb connector
- **Ground** – connect to black wire on either the turn signal or reverse bulb connector

Passenger Side:

- **Passenger Signal** – connect to outside non-black wire of tail light bulb connector