

2023+ SUPER DUTY MKII PALADIN BAR

STEP 1

Remove the plastic valance.

Use a pry tool or a small flat head screwdriver to pop up the tabs.
Once the tab is popped up you can remove this piece.



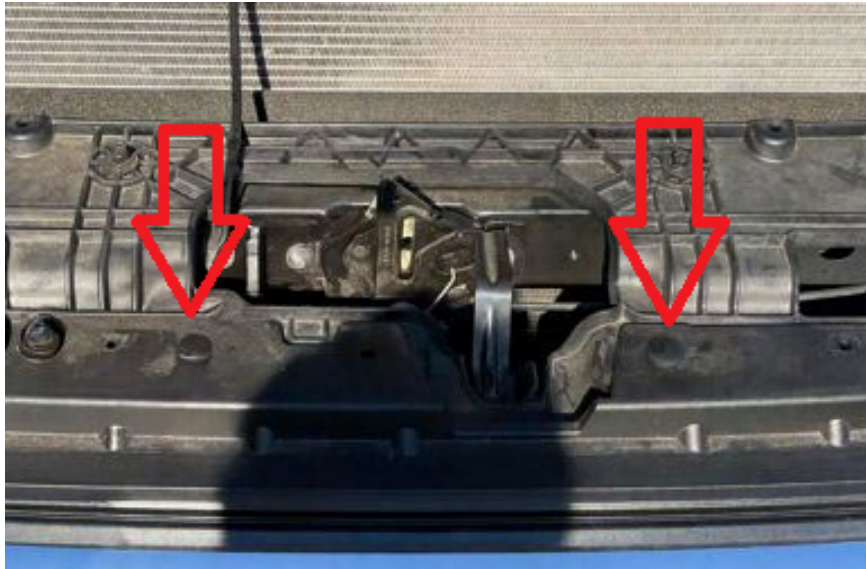
STEP 2

Remove four 10mm bolts at the top of the grill.



STEP 3

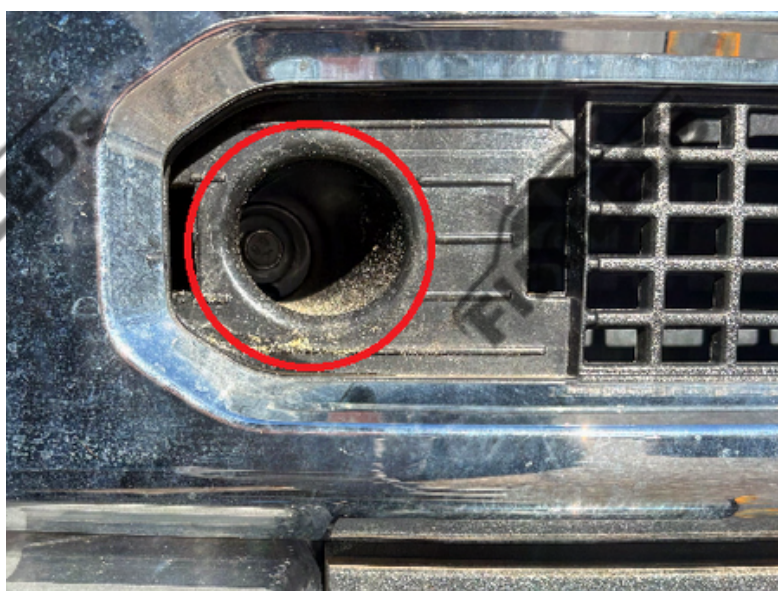
Remove two large push pins.



STEP 4

There are two plastic pieces covering two bolts near the bottom of the grill. Use a pry tool to pop these pieces out then remove the two 10mm bolts that are behind the plastic pieces.



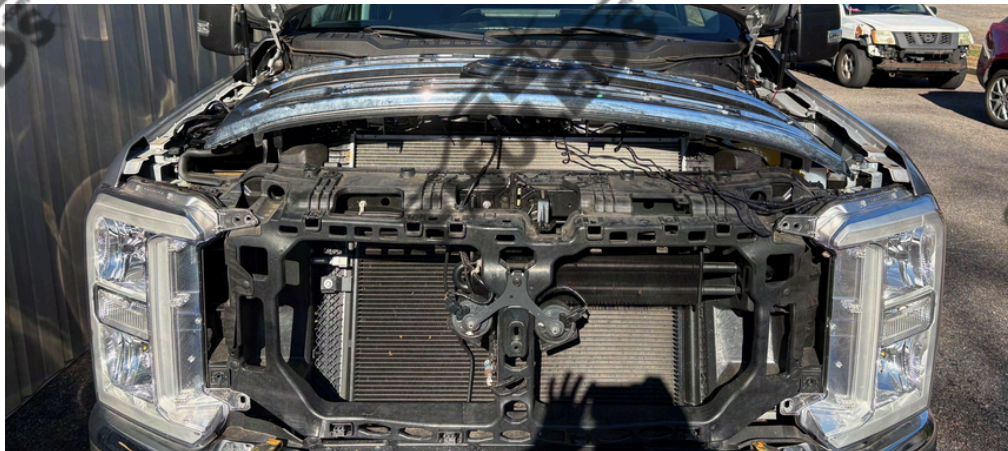


STEP 5

Disconnect the pieces holding the windshield wiper fluid line and front-facing camera (if you have a front-facing camera) **You do not have to completely unplug these if you are going to set your grill up in the engine bay area. If you wish to set your grill off to the side, you will need to unplug both of these*.*

STEP 6

Using moderate force, carefully pull the grill away from the truck and place it somewhere the grill will not get scratched.



STEP 7a

Pull the two plastic pieces around the two hooks away from the truck.



STEP 7b

There is an existing hole that was covered by the plastic pieces in step 7. These holes will be used to mount the bracket to the truck.



STEP 8

Slide the mounting bracket between the bumper and the rubber trim.



STEP 9

Line the hole in the bracket up with the hole seen in step 7b, then use the included hardware to mount this bracket to the truck.



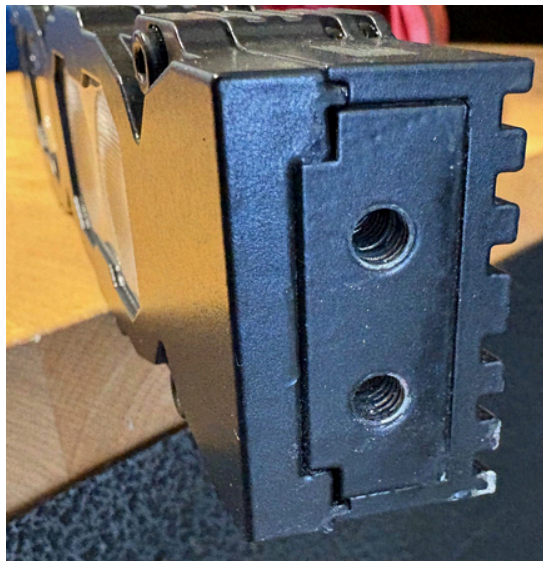
STEP 10

Once both brackets are securely installed to the truck reinstall the plastic pieces around the tow hooks, then reinstall the grill.



STEP 11

Hand-tighten each bracket to the bar with the long channel facing the inside of the truck.



Put the hex head bolt down into the long channel under the bar.

STEP 12

Mount the bar to the brackets. Center the bar to the grill. Then tighten the bar to the brackets.



STEP 13

Run the tri-connector coming from the light bar into the opening of the grill, then run the tri-connector from the light bar up behind the grill to the hood latch area.



STEP 14

Connect your wiring harness to your battery.

Remove the nut on the positive terminal of your battery and slide the red positive terminal ring over the bolt, then tighten the nut back into place.

Remove the nut on the negative terminal of your battery and slide the black negative terminal ring over the bolt, then tighten the nut back into place.

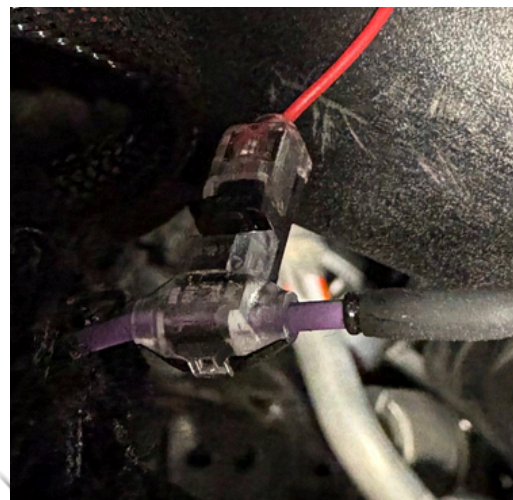
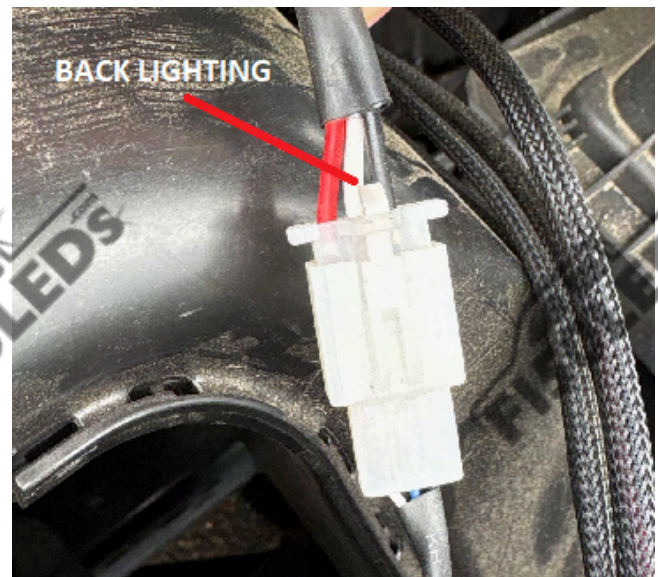


[illegible]

STEP 15

To utilize your truck's Aux switches, use the Aux switch wire from the kit (Red or Blue). Connect that to the Primary light connection of the wiring harness for this kit (White connector with blue wire in the center). Then locate your truck's Aux switch connection wires and, using the included T-clips, tap into the Aux wire corresponding to the switch you would like to operate the bar.

You can also connect the backlighting option to your Aux switches, the backlighting connection on the wiring harness is a white connector with a white wire in the center.

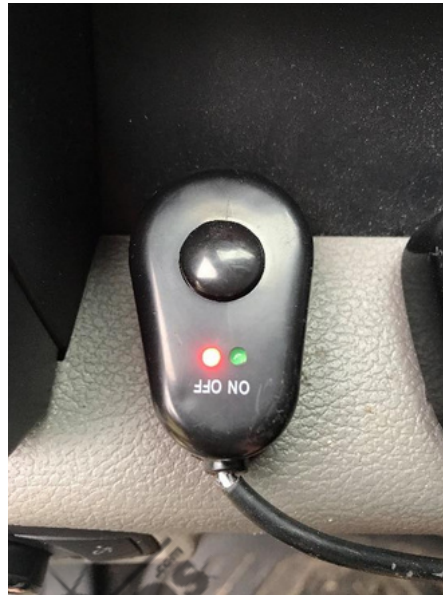


STEP 16

If you are utilizing an in-dash switch or switches, run the white connector (or connectors) past the rubber grommet seen in the photos below. Once you pass the connector through this grommet it will appear at the driver's side footwell. Pull the switch under the steering column and mount it on your dash area that you prefer most.

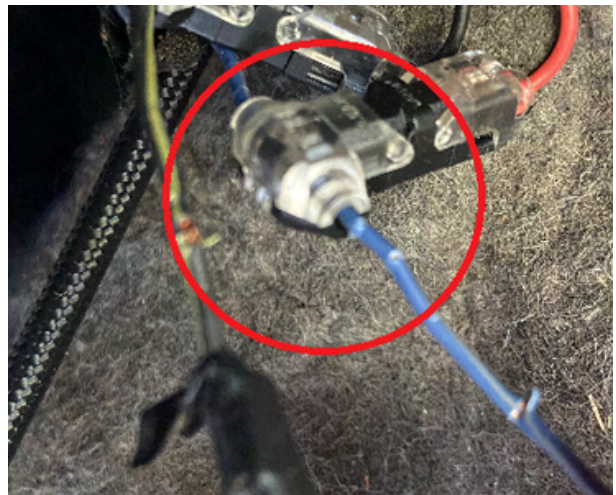


This can be done with the premium switch option as well



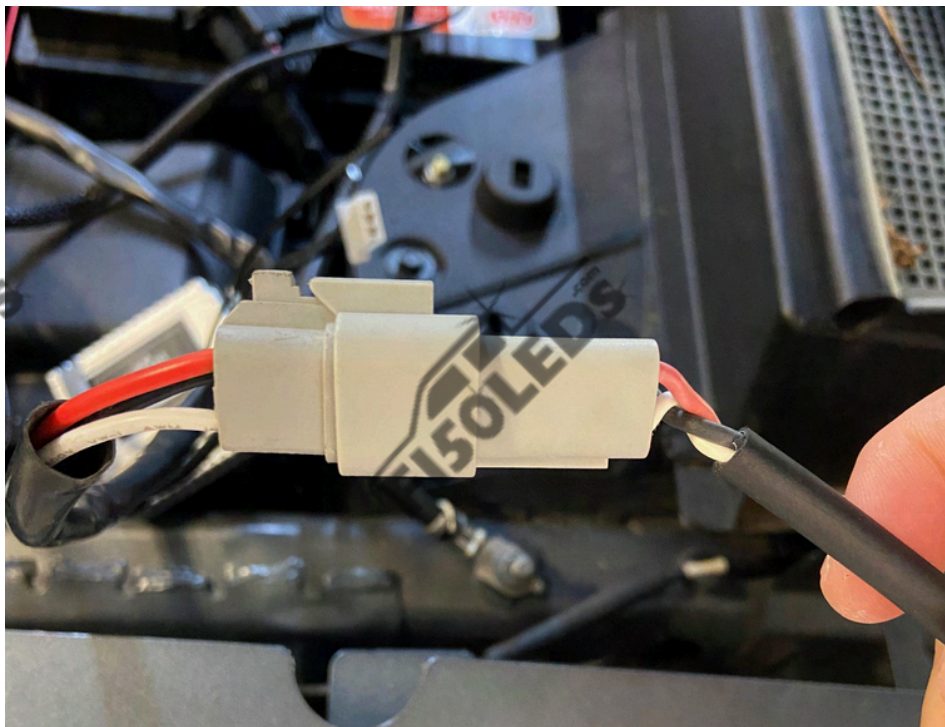
STEP 17

If you are connecting the backlighting to the front marker light, reach behind the headlight, remove the front marker socket using a counterclockwise turn, there are two wires coming from the front marker socket, using the T-clip, connect the red wire from the wiring harness to the non-black wire coming from the front marker socket, then reinstall the front marker back into the trucks headlight assembly.



STEP 18

Take the Tri-connector from the Paladin II bar and take the Tri-connector from the wiring harness and connect them.



STEP 19

Use the included zip ties to secure any loose wiring in the engine bay so it is not dangling and hanging freely in the engine bay.



Text for support: 706-214-2618
Visit our site to chat: www.F150LEDs.com
or email CustomerSupport@F150LEDs.com