

# 2018-2020 F-150 PALADIN II LOWER INTAKE BAR INSTALL

## STEP 1

Remove the two plastic bumper pieces by taking a pry tool and prying them away from the truck.



## STEP 2

There are two alligator-style clips on each side of the lower intake piece holding it in place. To remove the lower intake piece, pull the lower intake piece away from the truck from the two outside sides of the lower intake piece.

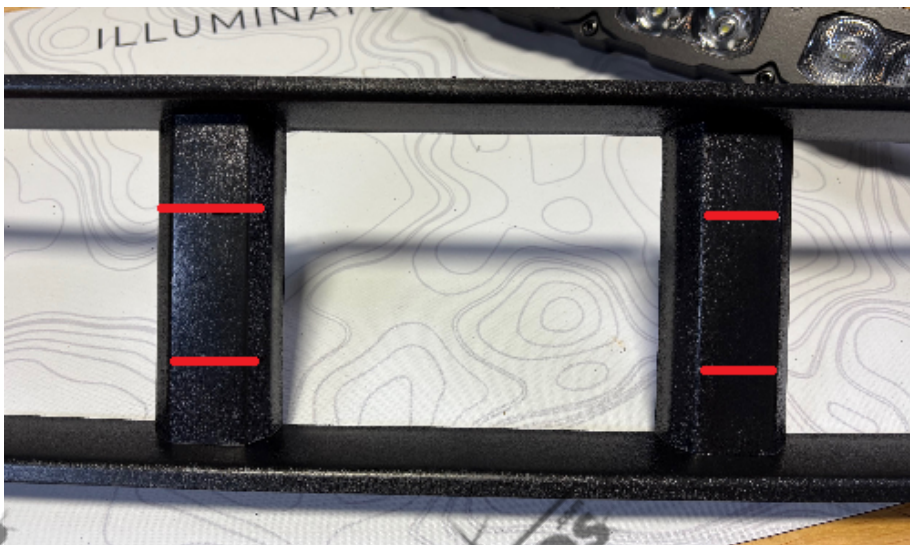


*\*It is helpful to reach behind the lower intake piece and pinch the alligator-style clips while pulling away from the truck\*.*

***Steps 3-6 are for customers who elected to modify their own lower intake piece. If you purchased a modified lower intake piece, skip to step 7.***

## STEP 3

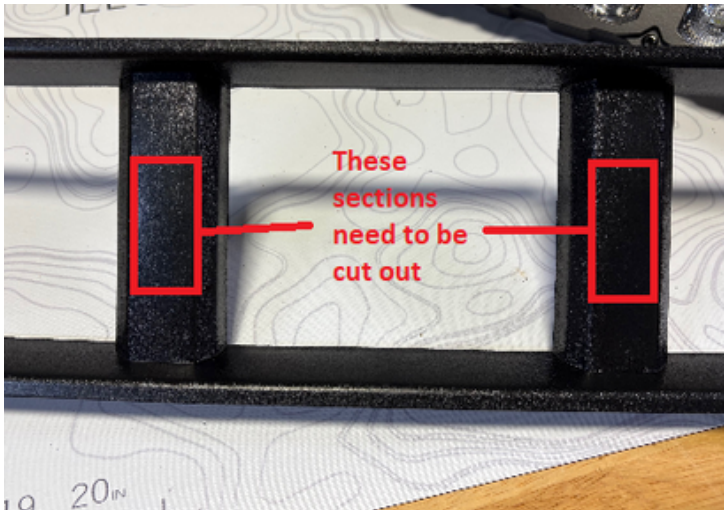
Lay the bar in the center of the lower intake piece, then take a sharpie and draw a line on the pillars of the lower intake piece where the bar is lying on it.



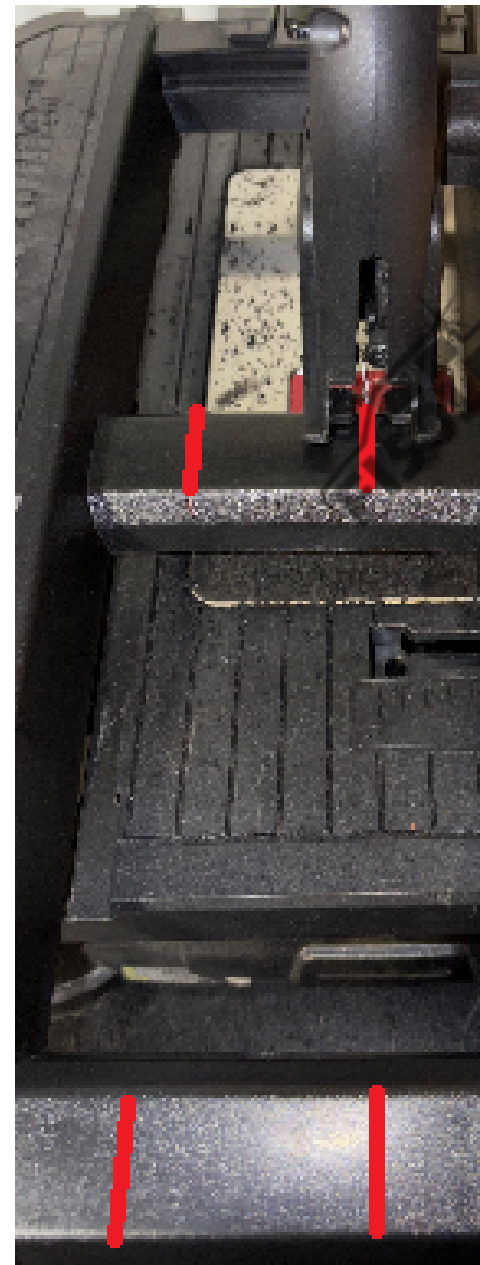


## STEP 4

Use a cutting tool that can cut through plastic to cut along the lines that you marked to remove the inner parts of the lower intake piece.



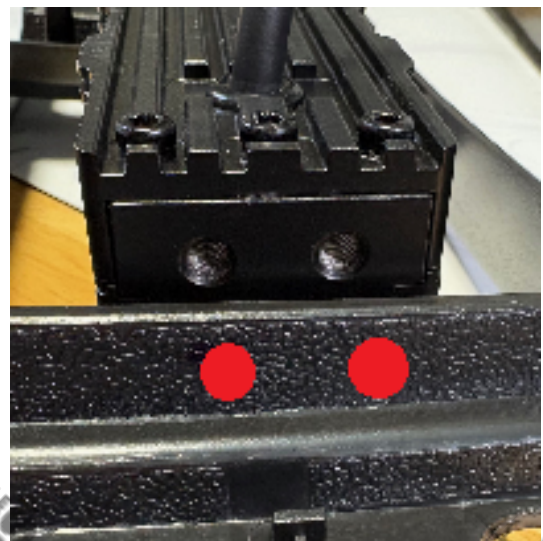
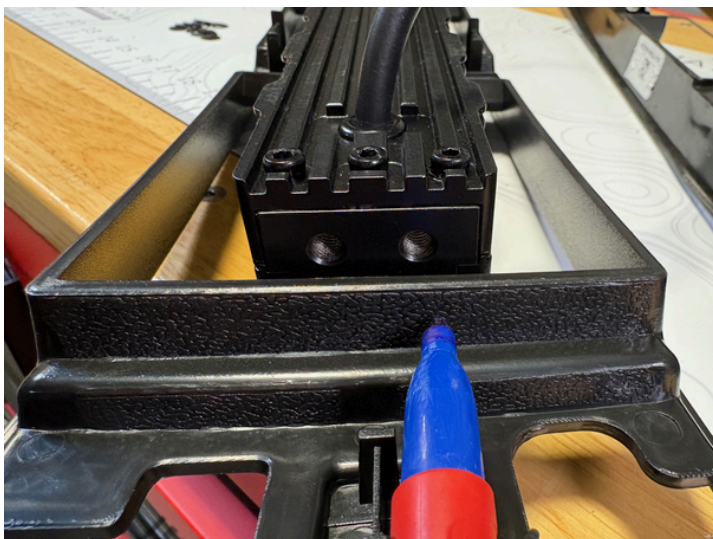
*\*We highly recommend wearing safety glasses and gloves\*.*





## STEP 5

Place the bar on the inside of the lower intake piece, then line up the two bolt holes on the bar with the flat piece on the side of the piece, then mark two holes on each side of the piece.



## STEP 6

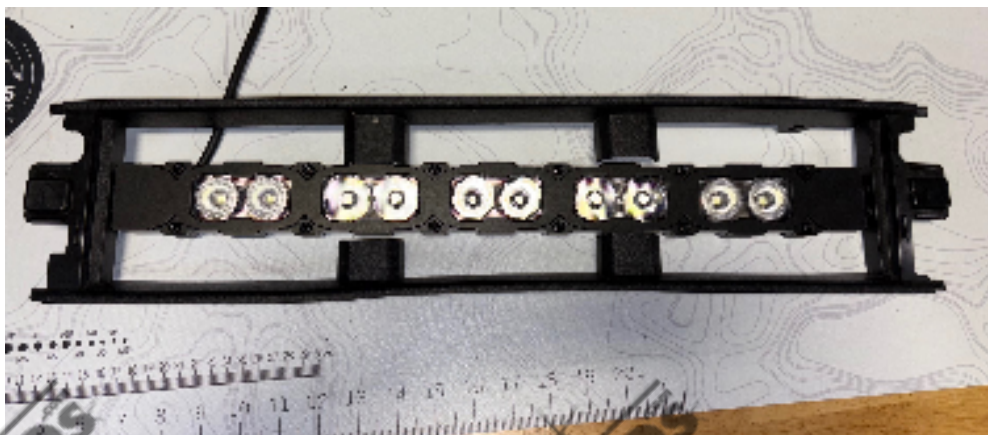
Use a size  $\frac{1}{4}$  drill bit to drill the holes that were marked in step 5. Be sure that the holes are in the center of the plastic piece.





## STEP 7

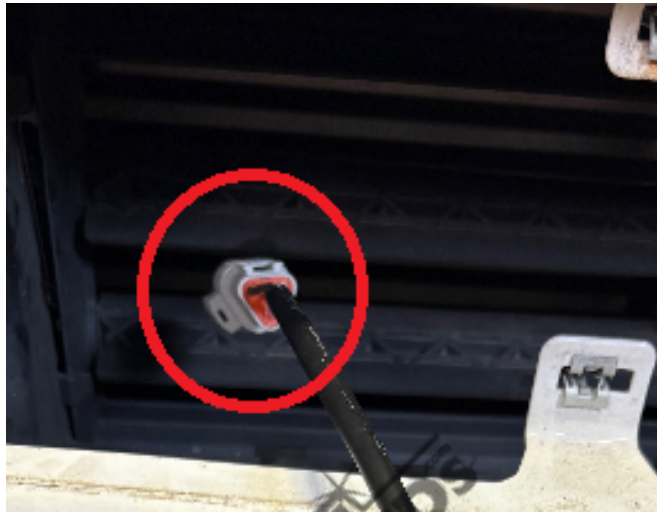
Put two hex head bolts into the holes in the side of the lower intake piece. Then, put two small washers on each bolt and use the included allen wrench to tighten these bolts. It is best to tighten one side, then do the other side.





## STEP 8

To reinstall the lower intake piece, first feed the tri-connector from the back of the bar into the opening seen in the photo, then line up the lower intake piece in the opening of the truck and snap it back to place.



## STEP 9

Reinstall the two plastic bumper pieces that were removed in step 1.





## STEP 10

Look under the bumper; the tri-connector should be visible behind the plastic piece seen in the photo. Pull down on the plastic piece and pull the tri-connector through this opening.





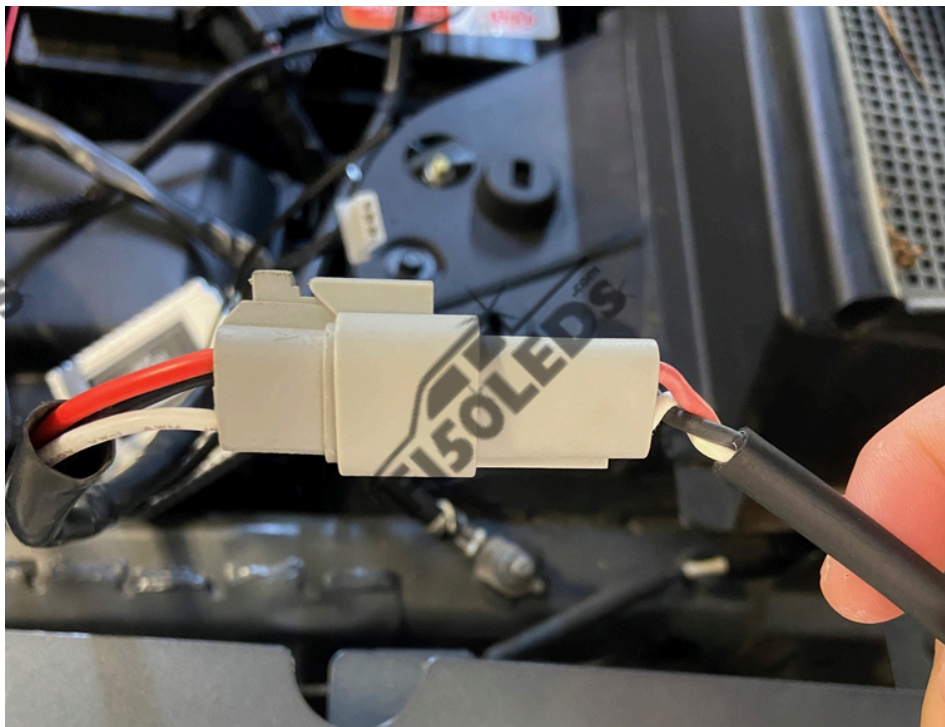
# STEP 11

Run the tri-connector from the wiring harness down from the engine bay to where the tri-connector from the bar is.



## STEP 12

Take the Tri-connector from the Paladin II bar and take the Tri-connector from the wiring harness and connect them.



## STEP 13

Connect your wiring harness to your battery.

Remove the nut on the positive terminal of your battery and slide the red positive terminal ring over the bolt then tighten the nut back into place.

Remove the nut on the negative terminal of your battery and slide the black negative terminal ring over the bolt then tighten the nut back into place.



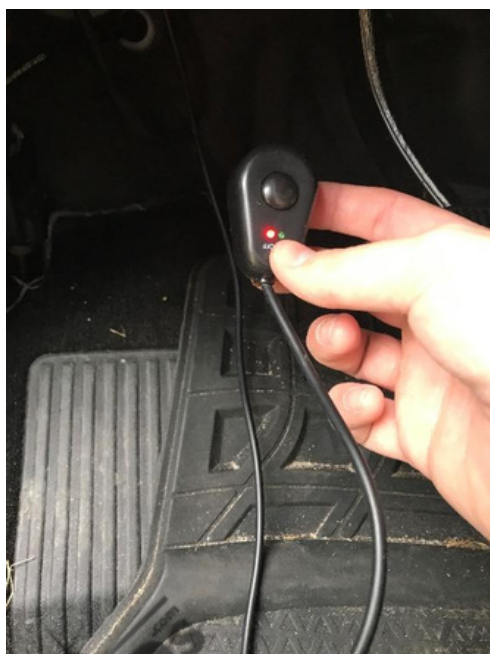


## STEP 14

If you are utilizing an in-dash switch or switches, run the white connector (or connectors) past the rubber grommet seen in the photos below. Once you pass the connector through this grommet it will appear at the driver's side footwell. Pull the switch under the steering column and mount it on your dash area that you prefer most.

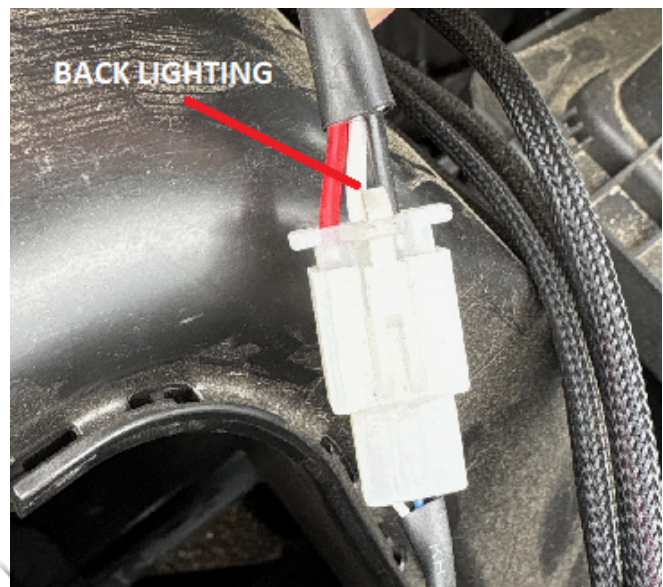


*\*This can be done with the premium switch option as well\**



## STEP 15

Connect the white connector from the switch to the white connector from the harness. The white connector with a blue wire in the middle is for the primary lighting, and the white connector with the white wire with the middle is for backlighting.





## STEP 16

If you are connecting the backlighting to the front marker light, run the white connector from the harness down from the engine bay to the passenger wheel well.



## STEP 17

Remove the three screws seen in the photos below to be able to push your wheel well liner out of the way.

Using a size 7mm socket or a phillips head screwdriver remove the screws in the photos below



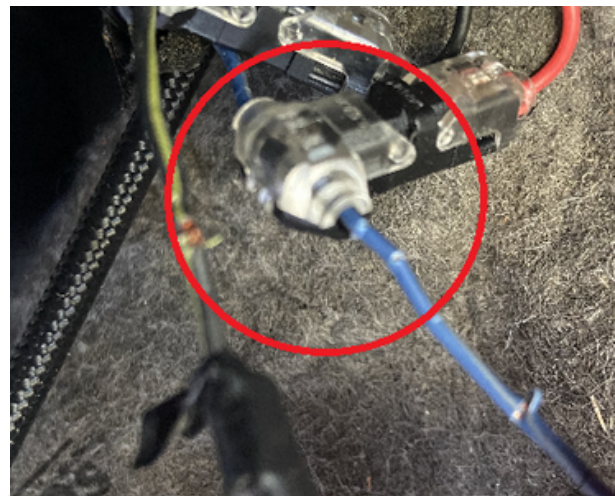


The first two screws are located right inside the wheel well, and the screw connecting the wheel well liner to the trim piece is at the top of the wheel well.

Once you have removed these screws, push the wheel well liner out of the way to gain access to the front marker bulb.

## STEP 18

Reach behind the wheel well and remove the front marker by turning the socket counterclockwise. The front marker will have two wires coming from the socket; the black wire is ground and the other wire is power. Use the provided T-clip to connect the backlighting to the power wire of the front marker socket.



## STEP 19

Reinstall the front marker into the headlight housing and put the screws back in the wheel well liner. Then use the included zip ties to clean up the excess wire.

## STEP 20

Use the included zip ties to secure any loose wiring in the engine bay so it is not dangling and hanging freely in the engine bay.



Text for support: 706-214-2618  
Visit our site to chat: [www.F150LEDs.com](http://www.F150LEDs.com)  
or email [CustomerSupport@F150LEDs.com](mailto:CustomerSupport@F150LEDs.com)