

# 2018-2020 F-150 PALADIN II BUMPER BAR INSTALL

## STEP 1

Locate your mounting locations. To locate the mounting locations, take the torx head screws in the included hardware kit and mount each bracket to the bar with the long channel facing the inside of the truck.



## STEP 2

Line up your bar on the bumper and make sure it is centered, also, when you line up your bar be sure that there is nothing under the mounting surface that will prevent a hole to be drilled.

Once your bar is lined up, mark a place on the valance inside the channel of the bracket with the marker; this will be where the mounting hole will be drilled.

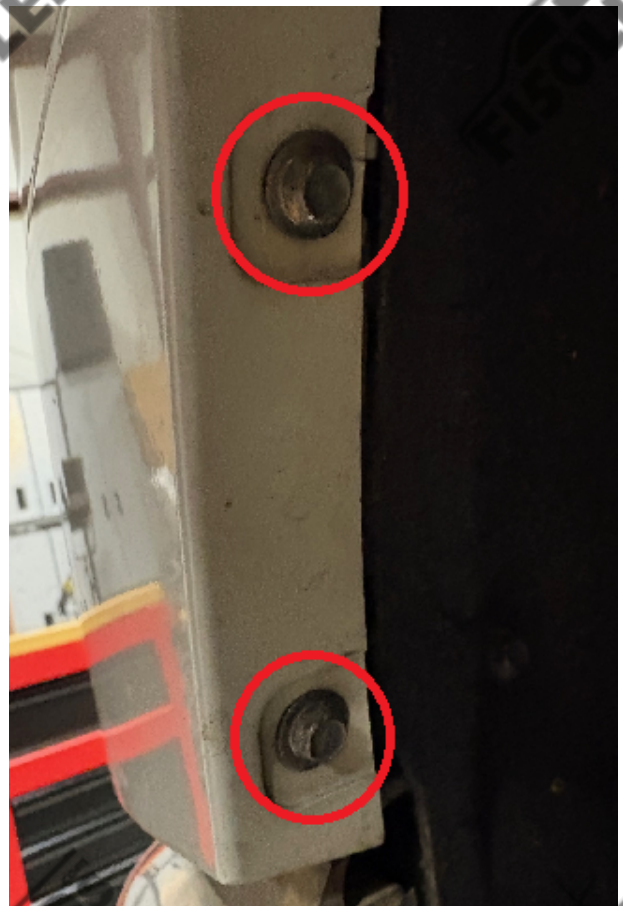


## STEP 3

Once you have marked where your mounting hole needs to be, remove the brackets from your bar.

## STEP 4

Remove the lower plastic trim piece by removing two seven 7mm size bolts from the two sides of the plastic trim piece.





Once these bolts are removed pull the fender directly away from the truck then pull this trim piece away from the truck carefully working from one side of the truck to the other. There are clips that are holding the front of of this plastic trim piece into place.

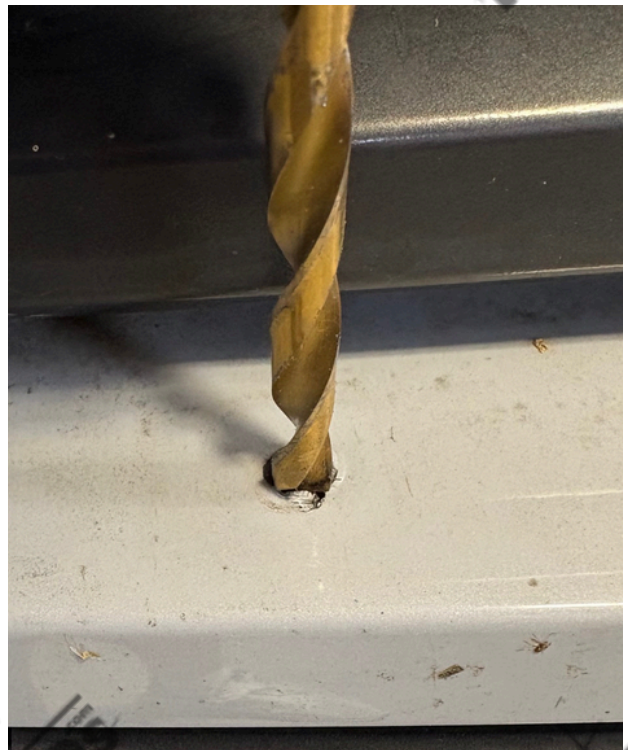


Once this trim piece is removed, set it off to the side somewhere that the paint will not get scratched.



## STEP 5

Once you have marked your hole. Use a 5/16 size drill bit to drill a mounting hole into your bumper.



## STEP 6

Put the bolt through the long channel of the bracket, then mount the brackets to this valance using the included hardware.



Use two size 14mm wrenches to tighten this bracket to the valance.





## STEP 7

Reinstall the valance to the truck.



## STEP 8

Mount the bar to the truck.



## STEP 9

Run the tri-connector coming from the light bar into the opening of the grille and then run it up to the hood latch.





## STEP 10

Use the included zip ties to zip tie the wire from the light bar to the grille so it does not interfere with the active shutter system.





# STEP 11

Connect your wiring harness to your battery.

Remove the nut on the positive terminal of your battery and slide the red positive terminal ring over the bolt then tighten the nut back into place.

Remove the nut on the negative terminal of your battery and slide the black negative terminal ring over the bolt then tighten the nut back into place.



## STEP 12

If you are utilizing an in-dash switch or switches, run the white connector (or connectors) past the rubber grommet seen in the photos below. Once you pass the connector through this grommet it will appear at the driver's side footwell. Pull the switch under the steering column and mount it on your dash area that you prefer most.



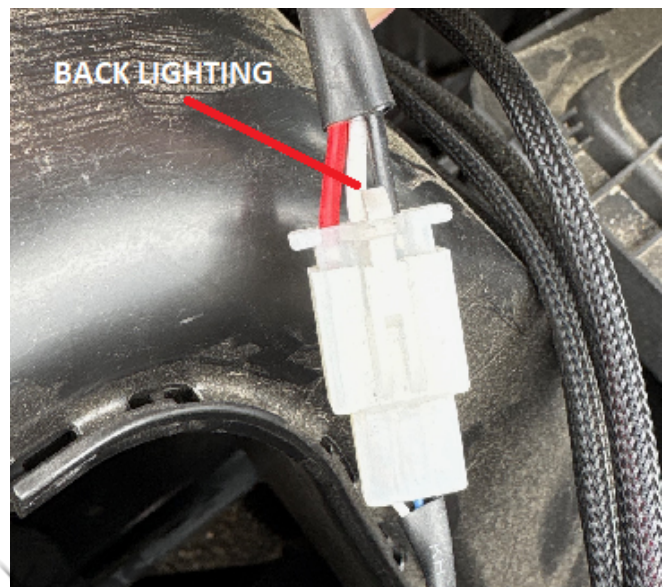
*\*This can be done with the premium switch option as well\**





## STEP 13

Connect the white connector from the switch to the white connector from the harness. The white connector with a blue wire in the middle is for the primary lighting, and the white connector with the white wire with the middle is for backlighting.





## STEP 14

If you are connecting the backlighting to the front marker light, run the white connector from the harness down from the engine bay to the passenger wheel well.



## STEP 15

Remove the three screws seen in the photos below to be able to push your wheel well liner out of the way.

Using a size 7mm socket or a phillips head screwdriver remove the screws in the photos below

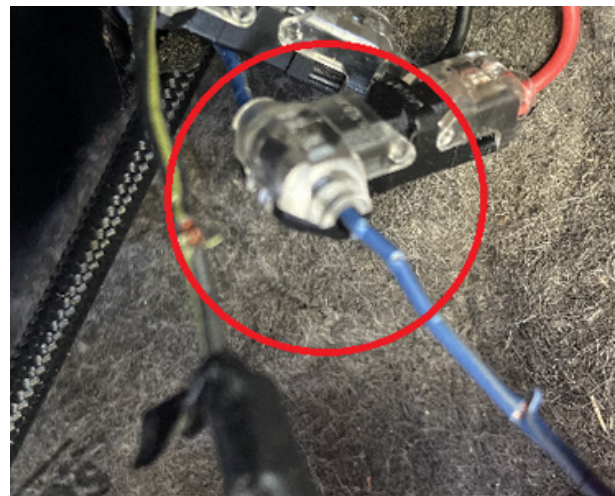


The first two screws are located right inside the wheel well, and the screw connecting the wheel well liner to the trim piece is at the top of the wheel well.

Once you have removed these screws, push the wheel well liner out of the way to gain access to the front marker bulb.

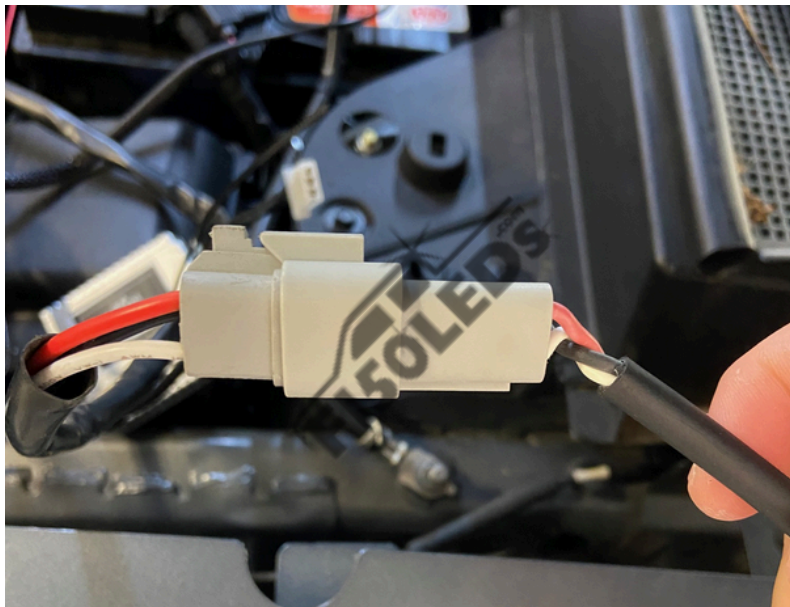
## STEP 16

Reach behind the wheel well and remove the front marker by turning the socket counterclockwise. The front marker will have two wires coming from the socket; the black wire is ground and the other wire is power. Use the provided T-clip to connect the backlighting to the power wire of the front marker socket.



## STEP 17

Take the Tri-connector from the Paladin II bar and take the Tri-connector from the wiring harness and connect them.





## STEP 18

Reinstall the front marker into the headlight housing and put the screws back in the wheel well liner. Then use the included zip ties to clean up the excess wire.

## STEP 19

Use the included zip ties to secure any loose wiring in the engine bay so it is not dangling and hanging freely in the engine bay.



Text for support: 706-214-2618  
Visit our site to chat: [www.F150LEDs.com](http://www.F150LEDs.com)  
or email [CustomerSupport@F150LEDs.com](mailto:CustomerSupport@F150LEDs.com)