



Baby Elegance, Dublin, Ireland
www.babyelegance.com

Please read the following instructions and warnings
carefully before use and keep for future reference.

Night Night

bedside
crib
by Baby Elegance

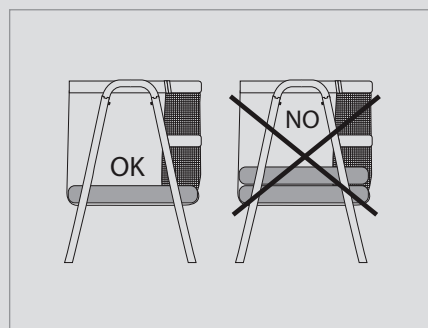


user manual

IMPORTANT. KEEP FOR FUTURE REFERENCE. READ CAREFULLY

WARNINGS

- **WARNING:** Do not use this product without reading the instructions first.
- **WARNING:** The cot should no longer be used when the child can sit up, kneel up or stand up unaided.
- **WARNING:** Placing additional elements in the cot may cause asphyxiation.
- **WARNING:** Do not place the product near any other products that could cause a danger of asphyxiation or strangulation, for example: strings, curtains, cords, etc.
- The assembly elements must always be securely fastened and inspected. This is to ensure they do not collapse and to prevent any of the elements from coming loose. This is important to avoid your child or your child's clothing being trapped and causing strangulation.
- The crib should always be placed on a horizontal floor.
- Gaps should not be filled with pillows, blankets or other items.
- DO NOT let children play near the crib without supervision.
- When the child is unsupervised in the crib, make sure that the rail is always up, correctly fastened in place and that the zips are fully closed.
- DO NOT use the product if any of the parts are broken, damaged or missing. Contact Baby Elegance for replacement parts and extra instructions if necessary. DO NOT replace any of the parts yourself.
- DO NOT use accessories that have not been approved by the manufacturer.
- Make sure that all of the assembly devices are correctly fitted, as well as the locking devices.
- Never use the cover without the metal structure.
- **WARNING:** To avoid the risk of your child's neck being caught on the top rail next to the adult bed, please ensure this rail is not higher than the adult bed mattress.
- **WARNING:** To avoid the risk of strangulation, the attachment system to the adult bed should always be kept out of the crib and out of reach.
- **WARNING:** Do not use more than one mattress in the crib.
- **WARNING:** To prevent the risk of fire: avoid placing the crib close to a fire or other sources of heat, such as electric or gas heating devices, etc.
- To avoid the risk of falls and suffocation, never put two or more mattresses in the cot.
- **WARNING:** Only use the mattress that comes with the crib.
- **DANGER!** Always raise the drop side completely when the crib is not attached to the adult bed.
- **DO NOT** use the crib with following types of adults beds:
 - The adult bed height is less than 49cm from floor to top of adult mattress.
 - The adult bed width is more than 180cm.
- **WARNING:** This bedside sleeper is suitable for a bed with an independent bed edge component, which can be attached with the anchor strap from the bedside sleeper.
- **WARNING:** Never add a sleep aid to the crib that is higher than the red line printed on the lining of the crib.

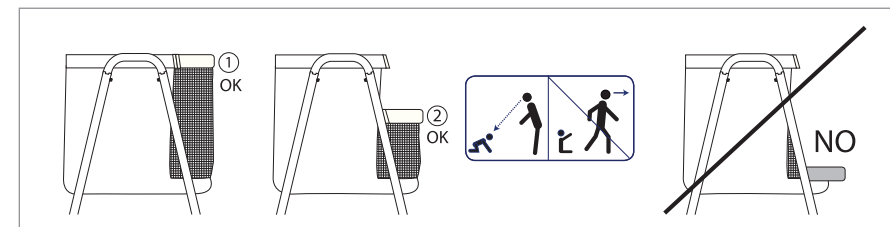


MAINTENANCE AND CLEANING

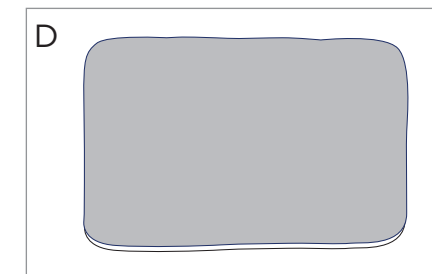
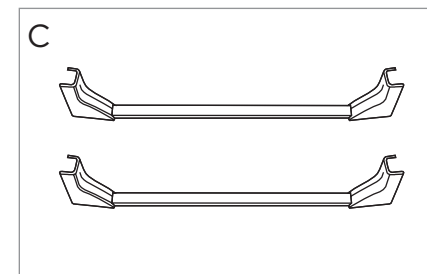
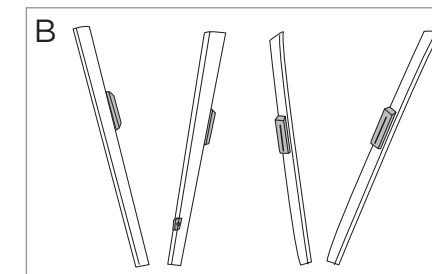
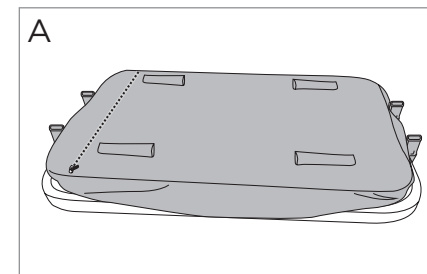
Keep the metal parts clean and dry to prevent them from rusting. To clean the plastic parts, use mild detergent and warm water.

WASHING THE COVER

Hand wash only and leave it to dry at room temperature.



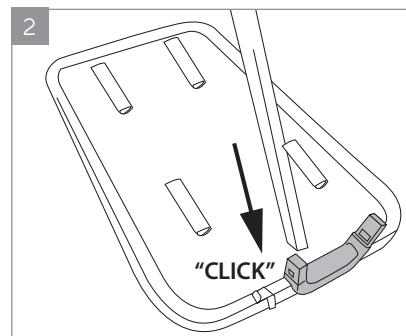
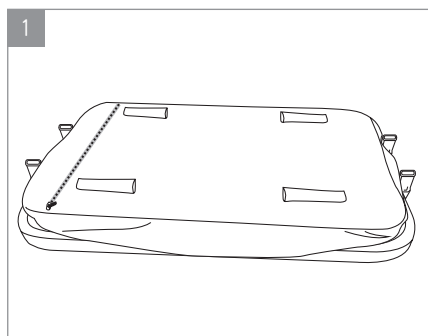
parts



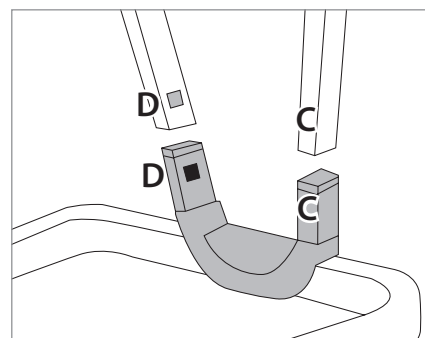
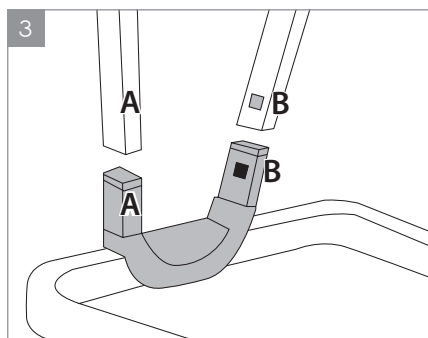
A) Set of structure and fabric cover
B) Support vertical

C) Detachable lower bar
D) Mattress

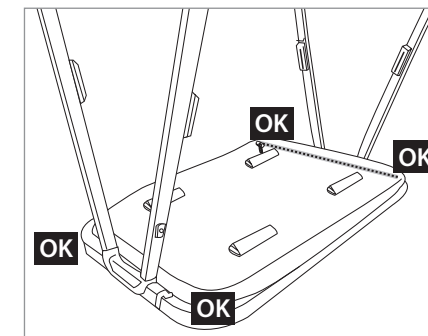
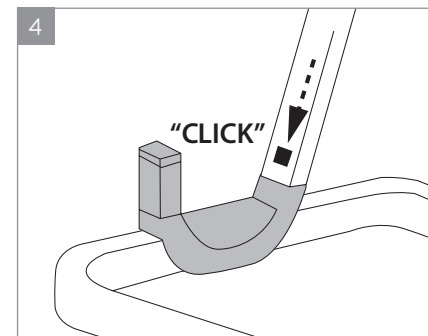
assembling the crib



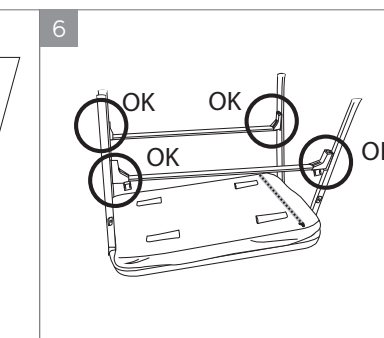
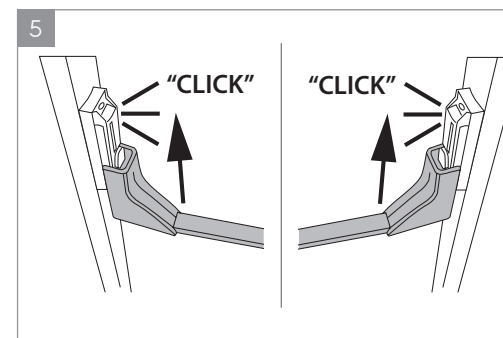
- 1) Remove the mattress, duvet, and pillow, and place the cot face down on a table or a clean, flat surface.
- 2) Insert the 4 legs into the plastic supports, aligning the holes at the side of the legs with the plastic support connectors (diagram 2).



- 3) Follow the order marked by the letters A B C D. The letter on the leg should match up with the letter on the plastic support A-A, B-B, C-C, D-D.

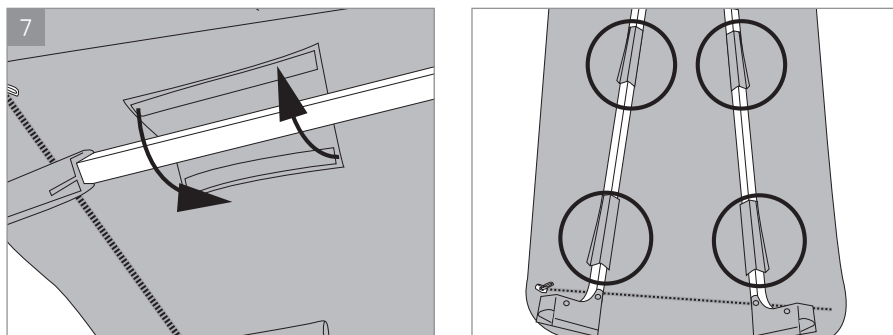


- 4) To fasten the leg correctly in place, press downwards until you hear the safety click and repeat the same process with the other legs.



- 5) Next, fit the crosspieces by simultaneously inserting the 2 side connectors upwards into the guides until they are slotted in fully. Insert them from the bottom to the top until they have both clicked into place.
- 6) Repeat the same process with the second crosspiece.

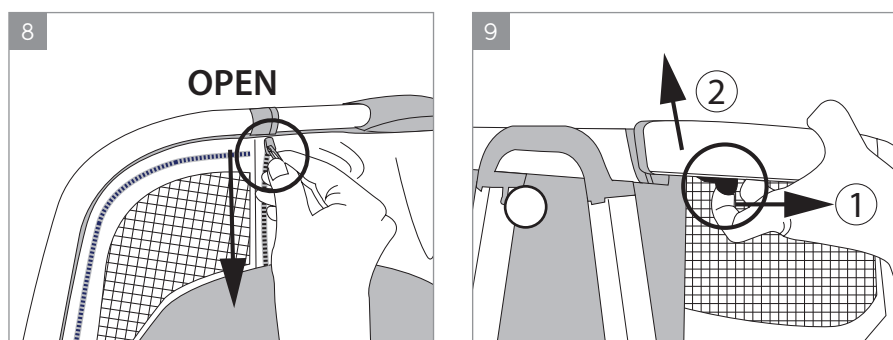
assembling the crib



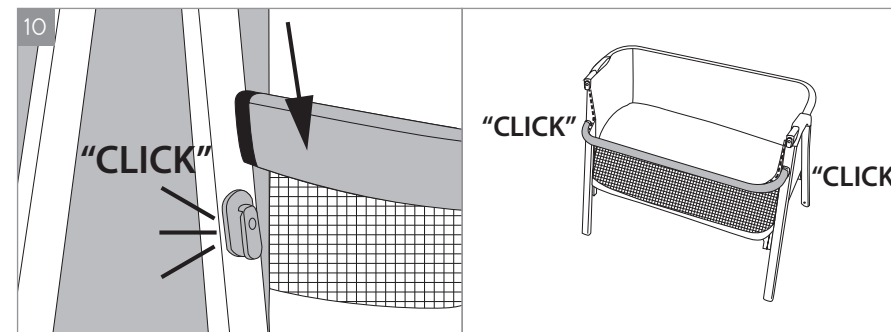
- 7) Turn the cot over and replace the mattress and pillow. Fasten the 4 Velcro flaps around the crosspieces, making sure that they are fully secure.

TO DISMANTLE THE COT, FOLLOW THE SAME PROCESS IN REVERSE.

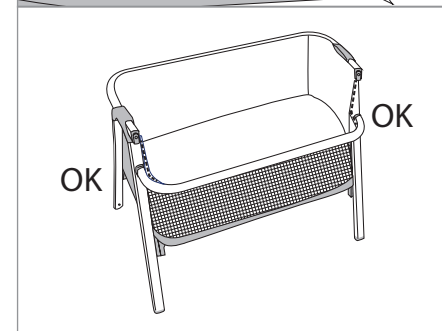
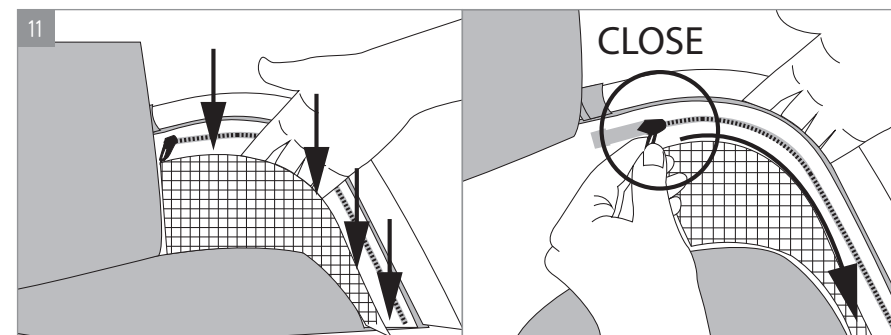
changing the height of the rail to the lower position



- 8) To lower the height of the safety rail: fully open the 2 vertical zips on the sides.
9) At the same time on both sides, unlock the safety rail by sliding buttons with your finger (Step 1) and move the rail upwards to take it out of the guide (Step 2).

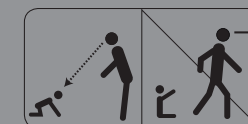


- 10) Insert the rail into the 2 lower anchor points, until you hear the safety clicks.

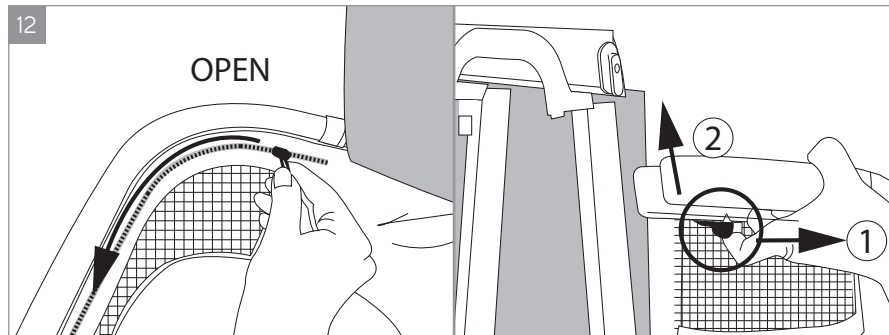


- 11) Conceal all the surplus netting along the rail under the zip. Fully close the horizontal zip to finish the rail lowering process.

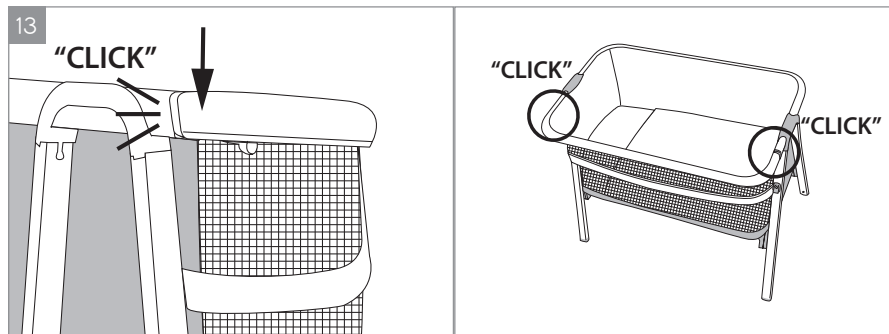
POSITION 2 (RAIL LOCKED IN THE LOWER POSITION)
WARNINGS: ONLY USE THIS POSITION WHEN AN ADULT IS PERMANENTLY SUPERVISING THE CHILD AND ONLY UP TO THE AGE OF 4 MONTHS.



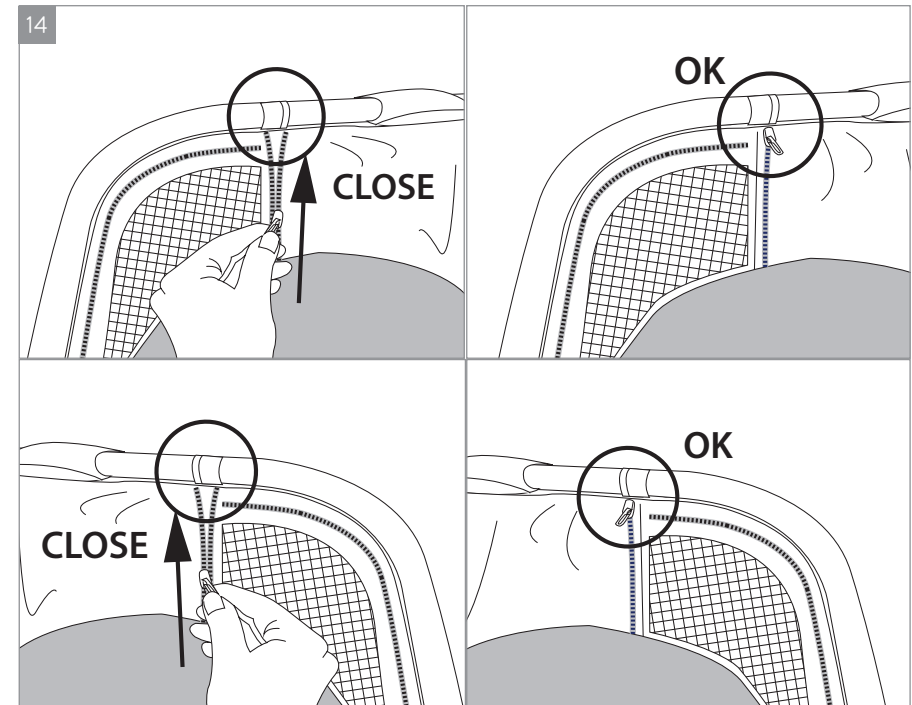
changing the height of the rail to the higher position



- 12) To raise the height of the safety rail: fully open the 2 vertical zips on the sides. Unlock the safety rail on both sides at the same time by sliding buttons with your finger (Step 1) and move the rail upwards to take it out of the guide (Step 2).

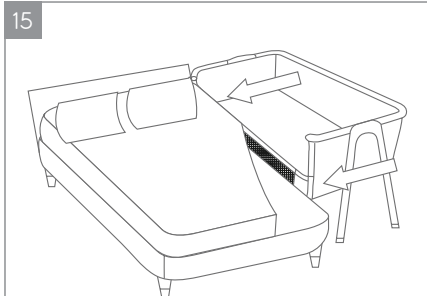


- 13) Insert the rail into the 2 upper anchor points, from top to bottom, until you hear the safety clicks.

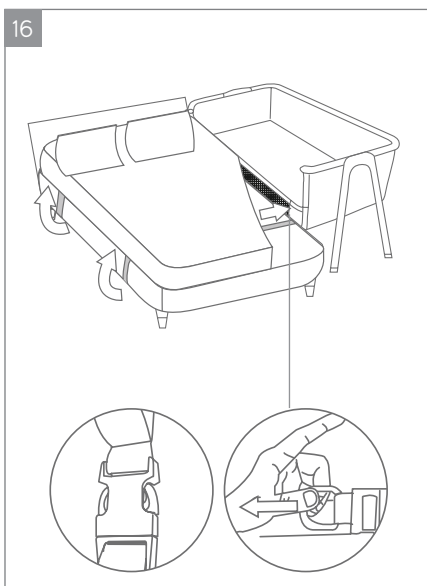


- 14) Lastly, close the 2 vertical zips to finish the process.

fixing to adult bed for bedside sleeper mode



15. With the crib rail in the lower position, place the crib close to the bed. Check the height of the sleeper against the height of the bed. The height of the open side edge of the crib should always be aligned with or lower than the height of the bed mattress.

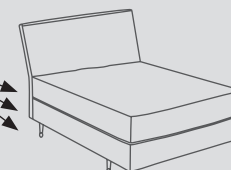


16. To fix the sleeper securely to bed, pull the anchor straps from under the bedside sleeper and slide under and over the bed base.

Lock the buckles under the bedside sleeper and tighten the straps until the sleeper is firmly attached.

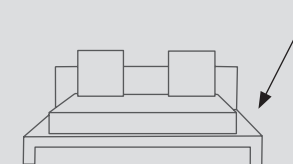
safety information

Mattress, boxsprings
& frame aligned

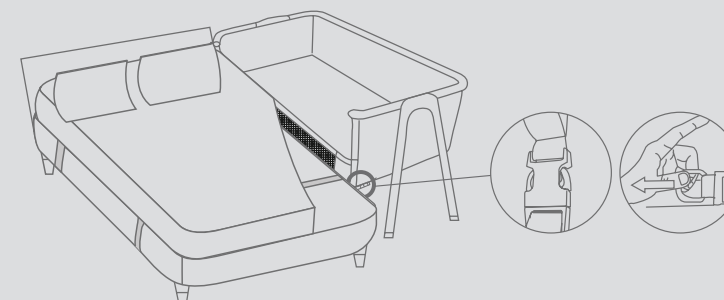


Acceptable: bed frame in-line

Frame extended



Unacceptable: bed, mattress, boxspring frame not in-line



NEVER use the bedside sleeper in the co-sleeping position without the anchor strap attached around the adult bed base and buckled under the bedside sleeper.

Ensure the anchor strap is securely buckled and tightly pulled.

WARNING:

There must be no more than 2cm gap between bedside sleeper and adult bed.

