

Allta Bouncer

Instruction manual



by

Baby Elegance®

IMPORTANT: PLEASE READ THE FOLLOWING INSTRUCTIONS AND WARNINGS CAREFULLY BEFORE USE AND KEEP FOR FUTURE REFERENCE.

**PLEASE READ THE INSTRUCTIONS BEFORE ASSEMBLY
AND KEEP THEM FOR FUTURE REFERENCE**

WARNING!

- **NEVER** leave the child unattended.
- **DO NOT** use the reclined cradle once your child can sit unaided.
- This reclined cradle is not intended for prolonged periods of sleeping.
- It is dangerous to use this reclined cradle on an elevated surface, e.g. a table.
- Always use the restraint system.
- Never use the toy bar to carry the reclined cradle.
- The maximum weight of the child for whom the product is intended is 9 kg.
- This reclined cradle does not replace a crib or bed. If your baby needs to sleep, they should be placed in a suitable crib or bed.
- Before each use or assembly, check the reclined cradle for damage, loose connections, missing parts or sharp edges. **DO NOT** use the product if any part is damaged or missing. In this case, contact the manufacturer's service department.
- **DO NOT** use accessories or replacement parts other than those approved by the manufacturer.
- This reclined cradle can be used by babies from the first days of their lives (0+).
- Never use the product on a soft surface (e.g. bed, sofa, cushion) because the product may collapse and suffocate the child. Use the product on a flat and stable surface.
- The product can be assembled only by adults.
- **NEVER** lift or move the reclined cradle when the child is inside. Do not adjust or modify the product when the child is inside.

WARNING! CONTINUED

- **DO NOT** let other children play with the reclined cradle.
- **DO NOT** use the product as a car seat.
- **DO NOT** use the product near stairs.
- **DO NOT** repair the product on your own and do not modify it. These operations can be performed only by an authorized service technician.
- **DO NOT** put items into the reclined cradle that may pose a threat to your child.
- **DO NOT** cover the reclined cradle with items that may prevent airflow or pose a threat to the child.
- If you are not using the product, keep it away from children.
- **DO NOT** suspend any items on the toy bar that could affect the stability of the reclined cradle.
- **DO NOT** place the reclined cradle with the child near e.g. curtains or electric wires as they may lead to suffocation hazard or electric shock.
- **DO NOT** use the product for purposes other than those for which it has been designed.
- Use and store the product away from fire, heat sources, moisture and liquids.

Cleaning and maintenance:

- Small stains on the covering should be cleaned with a wet cloth and a mild detergent.
- Covering can be removed and handwashed at temperature up to 30°C and with a mild laundry detergent.
- Do not use bleach or other strong cleaning agents.
- Do not machine wash and tumble dry.
- Wet covering should be laid out and left to dry fully.
- Frame and plastic elements should be cleaned with a wet cloth and a mild detergent. Before each use, frame and plastic elements should be wiped dry.
- Store the product in a dry place and keep it away from high temperatures and moisture.

SAFETY INSTRUCTIONS

- **DO NOT** use the product if any components are broken or missing.
- Powerful sway: Make sure that older child are not allowed to rock the baby too forcefully.
- **NEVER** leave baby unattended.

WARNING! Bouncer (max 20 lbs/9 kg):

- **DO NOT** use the bouncer once your child can sit unaided.
- Keep the toy out of the reach of children when it is not firmly attached to the product.
- Child's activity may move the bouncer.
- Dangerous to use on an elevated surface e.g. table.
- Never use the toy bar to carry the reclined cradle.
- This reclined cradle is not intended for prolonged periods of sleeping.

WARNING!

FALL HAZARD: Babies have suffered skull fractures falling while in and from bouncer.

- Use bouncer **ONLY** on floor.
- **NEVER** lift or carry baby in bouncer.

SUFFOCATION HAZARD: Babies have suffocated when bouncers tipped over on soft surfaces.

- **NEVER** use on a bed, sofa, cushion or other soft surface.
- **NEVER** leave baby unattended.

To prevent **falls** and **suffocation**:

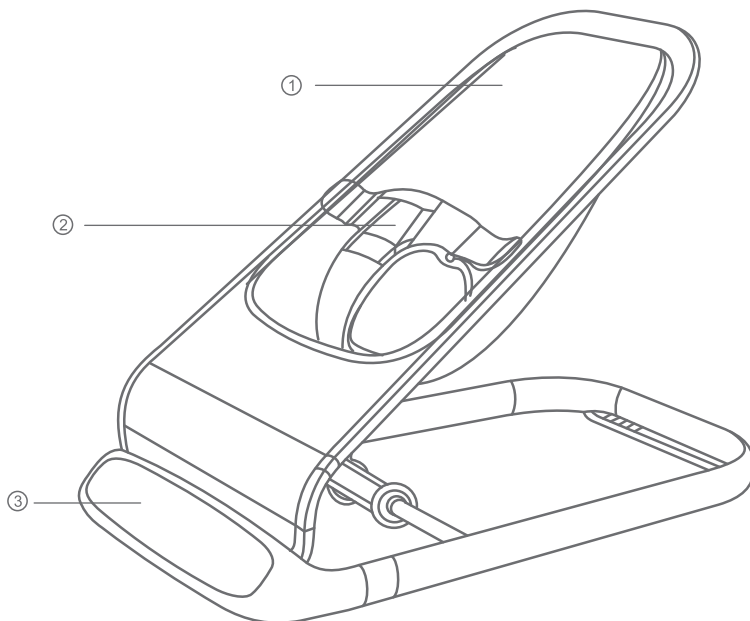
- **ALWAYS** use restraints and adjust to fit snugly, even if baby falls asleep
- **STOP** using bouncer when baby starts trying to sit up or has reached 9kg/20lbs, whichever comes first.

WARNING!

AMPUTATION HAZARD: Chair can fold or collapse if lock is not fully engaged.

- Moving Parts can amputate child's fingers
- Keep fingers away from moving parts.
- Completely unfold chair and fully engage locks before allowing child to sit in chair.
- Never allow child to fold or unfold chair

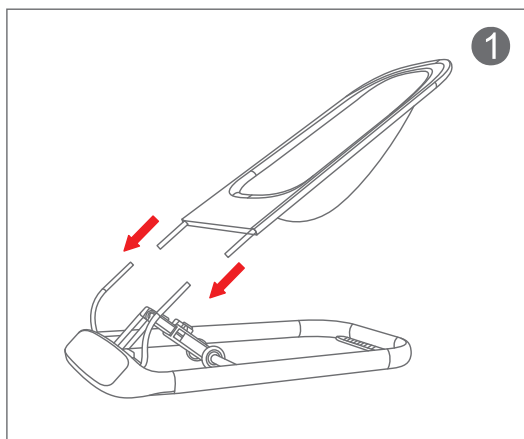
PLEASE CHECK THAT YOU HAVE ALL THE COMPONENTS LISTED BELOW BEFORE STARTING ASSEMBLY



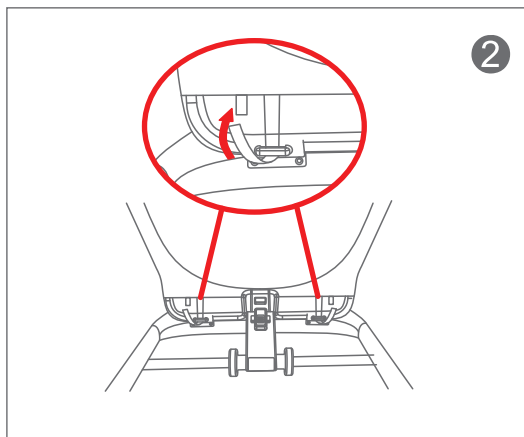
1. Covering

2. Safety harness

3. Bouncer base



1. Put the connecting elements of the frame into the bouncer base (fig. 1). Make sure they are inserted properly.

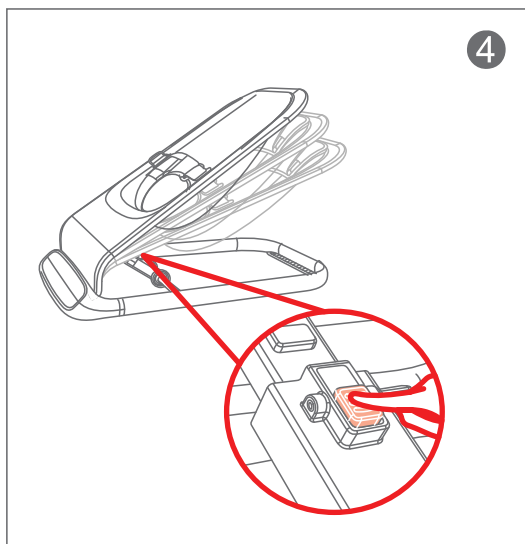


2. Fasten the Velcro in the lower part of the covering to connect the covering with the bouncer base (fig 2)

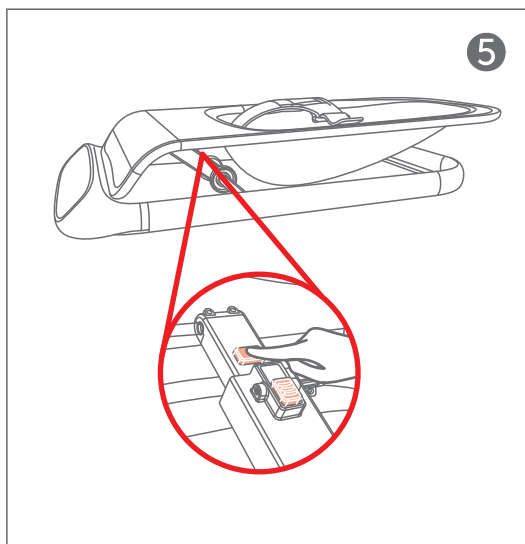


3. Fasten the safety harness buckles. To unfasten the harness, press the buttons located on the sides of each buckle (fig. 3).

Adjust the length of the safety harness straps to fit the size of the child's body (fig.3).



4. Adjust the backrest position by release the mechanism button (fig. 4).



5. While folding the bouncer, just release the upper mechanism button (fig.5).

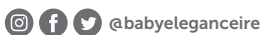
To disassemble the bouncer, follow the instructions above in the reverse order.

Baby Elegance®

Please don't hesitate to contact us for any more information on this product
hello@babyelegance.com

This product is manufactured in China
Made in China imported by Baby Elegance

Baby Elegance
205 Northwest Business Park
Ballycoolin
Dublin 15
Ireland



**UK
CA**
Baby Elegance
International House
142 Cromwell Road
London
SW7 4EF

