

# **Tamopro**

**Key safe with illuminated multi-push buttons**

**Installation guide and instruction manual**

EN – Original instructions

# Contents

1	<b>Introduction</b>	<b>6</b>
1.1	Intended use	6
1.2	Used symbols	7
2	<b>Safety instructions</b>	<b>8</b>
3	<b>Specifications</b>	<b>9</b>
4	<b>Setting a code</b>	<b>10</b>
4.1	Choosing a code	11
4.2	Setting a code	12
4.3	Checking the code	17
5	<b>Installing on a wall</b>	<b>18</b>
5.1	XL Security Screws & Wall plugs 100mm - B1	20
5.2	Standard Security Screws 60mm – A10	23
6	<b>Using your Tamo Pro</b>	<b>26</b>
6.1	Opening/unlocking	26
6.2	Closing/locking	28
7	<b>Maintenance</b>	<b>28</b>
7.1	Cleaning	28
7.2	Spare parts	29
7.3	Replacing the illumination module	30
8	<b>Disposal</b>	<b>31</b>
9	<b>Warranty</b>	<b>31</b>

## Installation guide and instruction manual

### Preface

Dear Valued Customer,

Thank you for purchasing the Tamo Pro key safe. This manual contains all the information to familiarise yourself with the product. We request that you read this manual carefully before you install and start using the product. This manual covers setting the code, installing the device and how to use it.

All images included in the manual are for reference only and may not fully represent the actual product. There may be variations in design or details.

Please keep this manual safe for future reference.

If you have any queries please contact us at:

**The Key Safe Company**

Unit 4 - 5, Nunnery Park

Hornhill Road, Worcester

Worcestershire, WR4 0SX

Authorised EU representative: 24 hr AR Van Nelleweg 1,  
3044BC, Rotterdam, The Netherlands

*Tamo Pro is designed and manufactured by Supra UK;  
includes Technology licensed from WKPE*

**[www.keysafe.co.uk](http://www.keysafe.co.uk)**

[hello@keysafe.co.uk](mailto:hello@keysafe.co.uk)

+44 (0) 330 363 0303

# Main Parts

EN

Image 1

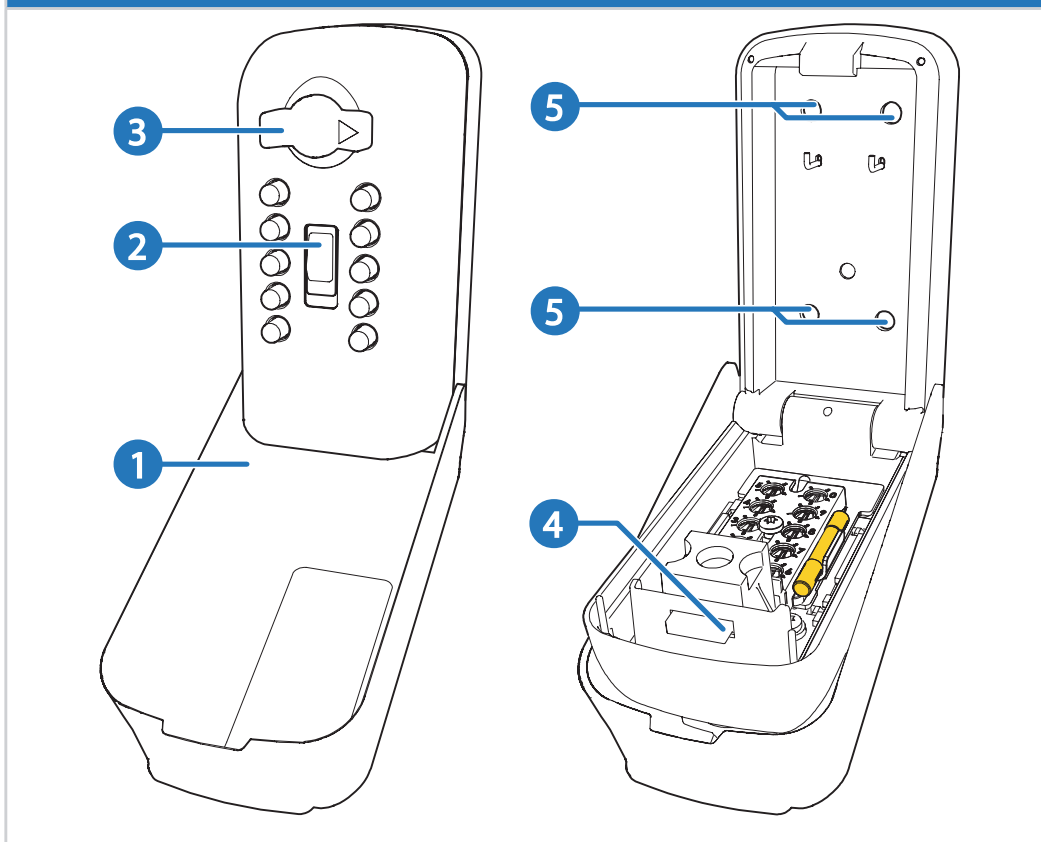
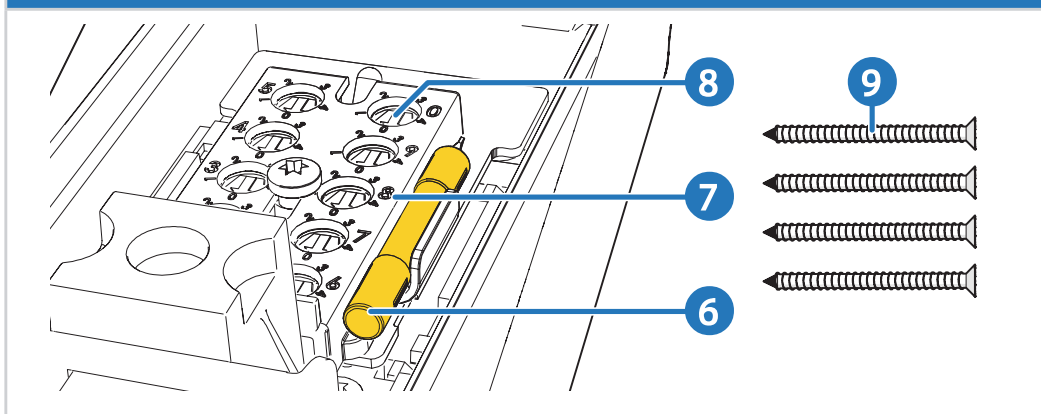


Image 2



1. Weather cover
2. Clear button
3. Open dial
4. Latch
5. Mounting holes

6. Code change tool
7. Code cover
8. Code dials
9. Standard security screws 60mm (×4), XL security screws & wall plugs 100mm

# 1 Introduction

## 1.1 Intended use

This product is a key safe, built to police preferred specification by 'Secured by Design', the official UK Police security initiative, which certifies products proven to reduce crime. In other words this is a secure storage solution for keys, access cards and key fobs. The key safe prevents unauthorised individuals from accessing your belongings.

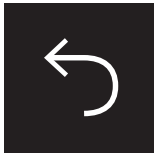






The code buttons are illuminated for use at night. They light up when the clear button is pressed. When the safe is open there is an internal light in the vault.

Each button can be pressed up to 4 times giving 9.7 million possible codes. There is enough space for several keys and access cards.

The device must be installed as specified in this manual with the screws supplied otherwise the security accreditation may be invalid.

## 1.2 Used symbols

The following symbols are used throughout the manual, on the product or the packaging:

	This symbol indicates the clear button. Pressing this, clears the code from the mechanism and turns the illumination module on.
	This symbol indicates the 'directional arrow' which points to the lock and unlock position.
	This symbol indicates the key safe 'unlock icon'.
	This symbol indicates the key safe 'lock icon'.
	This symbol indicates that this product should not be thrown away with other household waste throughout the UK & EU. To prevent harm to the environment or human health by uncontrolled waste disposal, you are responsible for recycling for sustainable reuse of raw materials. To return your product, please use regular return and collection systems or contact the seller.
	
	This symbol indicates that the packaging is to be recycled as recommended locally.



This symbol indicates recycling system in France for battery-operated products and batteries. The product should be recycled as recommended on the label.

## 2 Safety instructions

### General

- Only use the Tamo Pro as described in this manual.
- Do not use if visibly damaged.
- Battery module can be easily changed by anyone, with no special skills required.
- Do not modify, modification of the key safe will void warranty.

### Installation

- Do not mount the Tamo Pro within 150mm (6 inches) of the corner on a masonry surface.
- Make sure the Tamo Pro is mounted flush with the surface and does not move.
- Standard Screws are only installed into brick, concrete, flat stone or single skin walls to maintain the LPS1175 security certification A10.
- Make sure the XL Screws & Wall plugs are only installed directly in to brick, concrete, flat stone or rendered walls to maintain the LPS1175 security certification B1.



- Do not install screws directly into mortar, as this will weaken the mounting.
- Do not reuse the screws when reinstalling. Replacements are available at **[www.keysafe.co.uk](http://www.keysafe.co.uk)**
- For rendered surfaces the security approval covers render up to 20mm thick.

### 3 Specifications

Product	Tamo Pro
Part number Tamo	960019
Inner dimensions (W × H × D)	55mm × 90.5mm × 19.5mm
Dimensions (W × H × D)	85mm × 160mm × 75mm
Weight	2.2 kg
Operating temperature	-30 °C – +50 °C
Lock type	Combination key pad lock
Possible combinations	Over 9 million codes
Vault material	Zamak3 – zinc aluminium alloy
Screw type	4×60mm masonry or 4×100mm wall plug and screw
Battery illuminated module	CR2477 battery
Expected lifespan of the illuminated module battery	5 years, based on 4 uses per day
Attack Test standard LPS 1175 Issue 8	B1 using XL Security Screws & Wall plugs - WPS001FK  A10 using Standard Security Screws - MPK311

## 4 Setting a code

Scan QR code on the front of your key safe for handy video resources.



## 4.1 Choosing a code

There is no preset or 'master' code and codes are not held by The Key Safe Company. We recommend using a code of minimum 6 digits with one of the digits repeated. For example **199621**.

Each of the digits can be used up to 4 times.

Example:	199991	✓	Digit 9 is used 4 times.
	<b>199999</b>	✗	Digit 9 is used 5 times. This is not possible.

1. Avoid choosing a code that is easy to guess such as 123456.
2. Count how often each digit is used in your code.
3. Write down your code and keep it in a safe place.

## 4.2 Setting a code

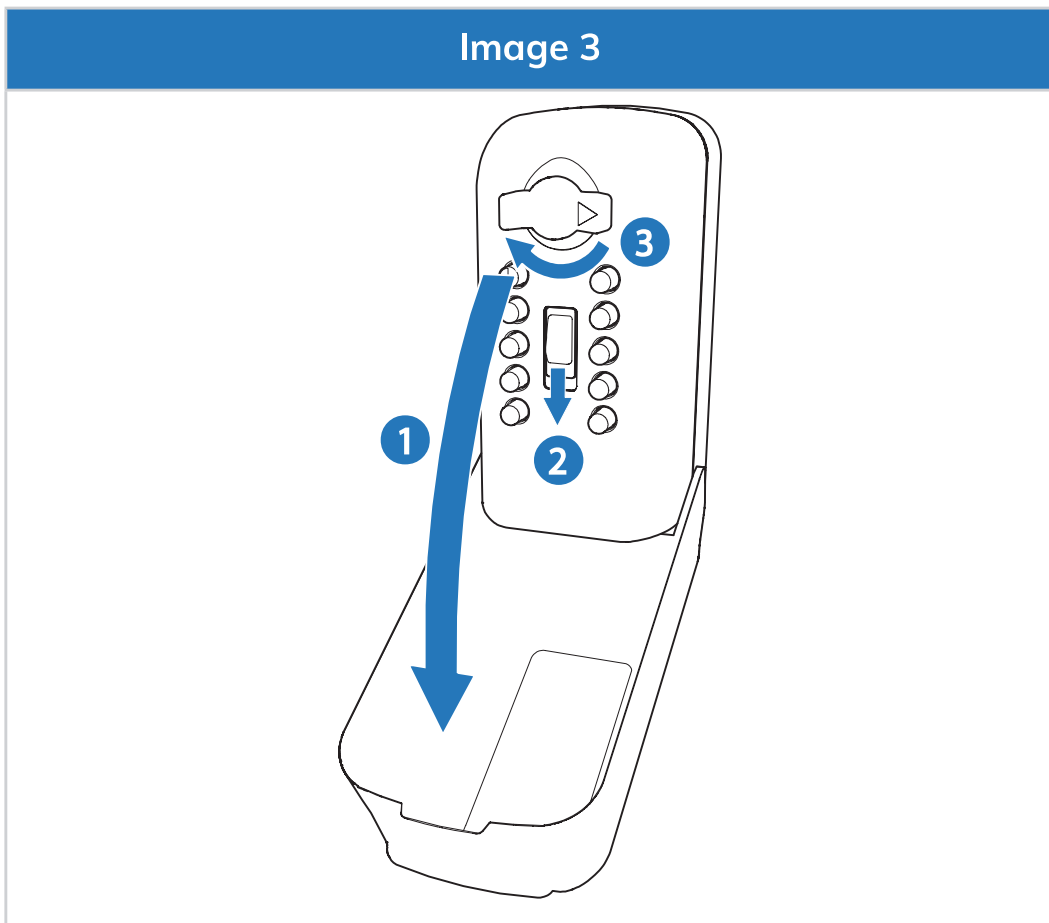
The code is based on the amount of times a digit is used. The order of the digits is not important.

See 'Choosing a code' for more information.

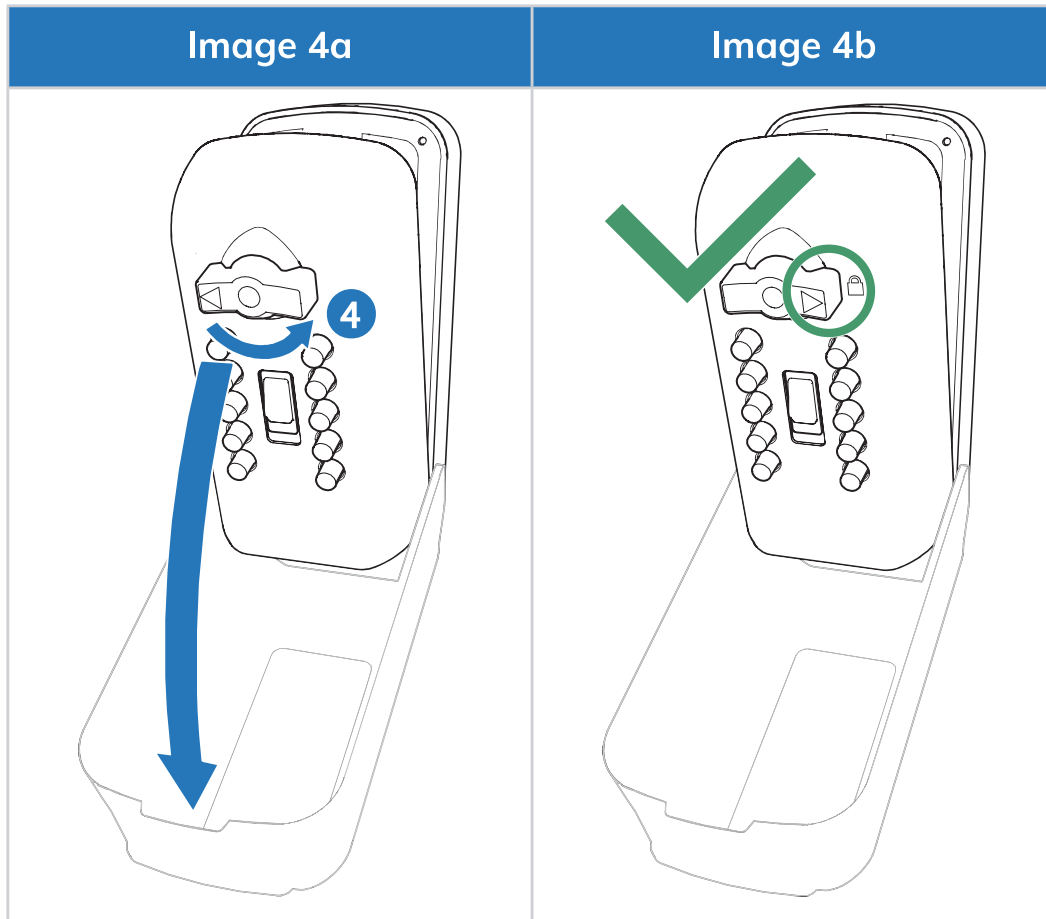
To set a code please follow the instructions below:

1. Open the weather cover (see **Image 3**).
2. If setting the code before installation on a wall you can remove the weather cover.
3. Pull down the clear button and release.
4. Rotate the open dial 180° clockwise to unlock the device.
5. Open the device.

Image 3

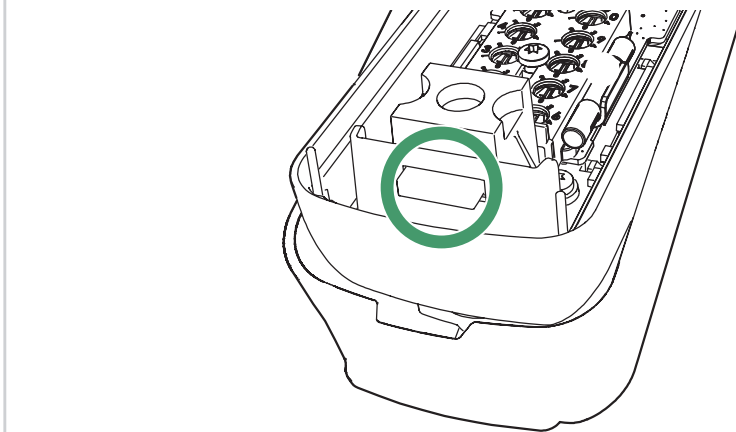


6. Rotate the open dial 180° anti-clockwise with the lid open to push the latch out (see **Image 4a**). The arrow on the front of the key safe should point at the locked padlock symbol (see **Image 4b**).



7. Make sure that the dial is turned fully 180 degrees anti- clockwise towards the locked padlock symbol to see the latch fully exposed (see **Image 5**).

Image 5



8. Slide the code cover towards the latch using your hands to see the code dials fully exposed.
- i** If the open dial is not rotated fully 180 degrees anti-clockwise towards lock symbol, **DO NOT** slide the cover as it will cause damage to your key safe (see **Image 5a** and **Image 5b**).

Image 5a

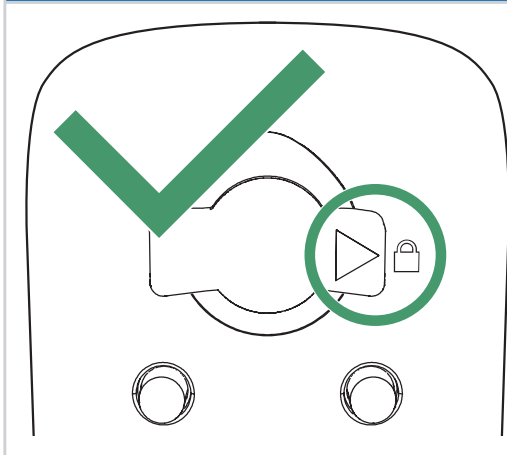
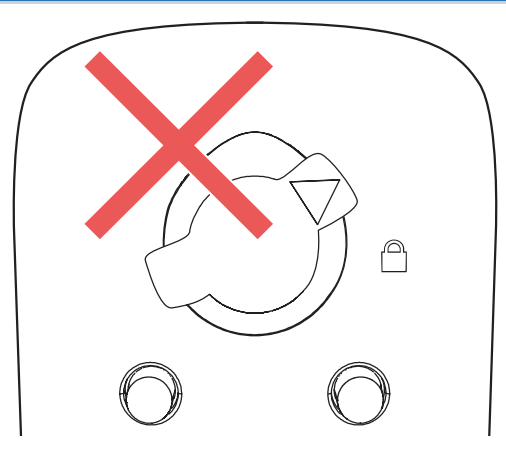


Image 5b



9. Take out the code change tool (see **Image 6**).
10. Use the code change tool to turn the code dials of each digit to the number of times this digit is used in your code (see **Image 6a** and **Image 6b**).

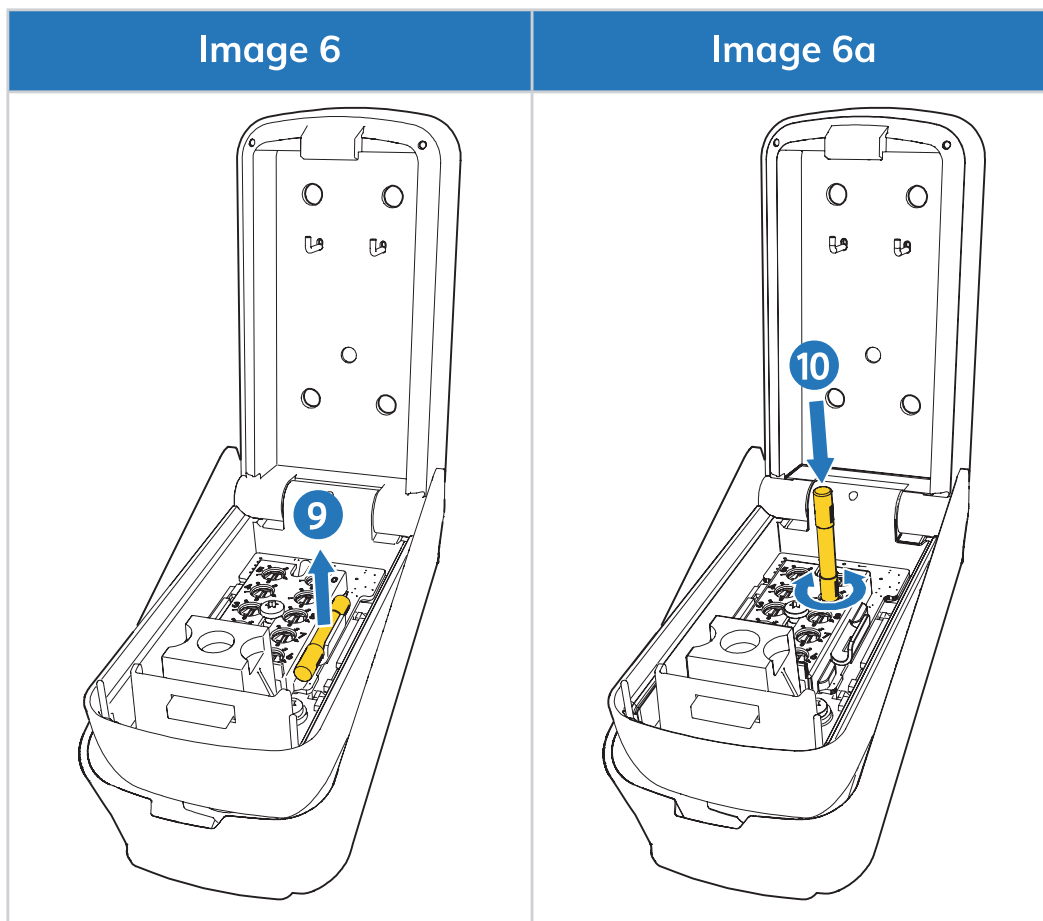
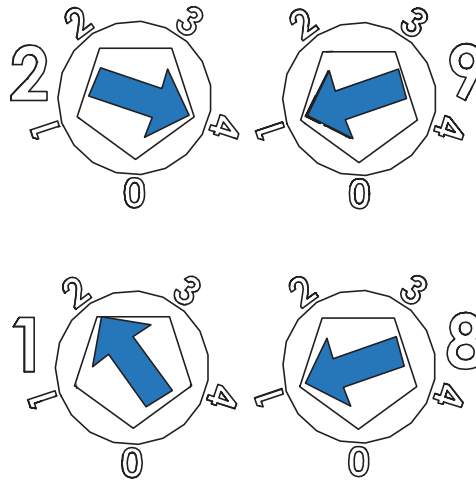


Image 6b



Example of an 8 digit code where the number 2 is used 4 times.

2212 1982

1 is used twice

2 is used 4 times

8 is used once

9 is used once

- ➔ set **code dial 1** to 2
- ➔ set **code dial 2** to 4
- ➔ set **code dial 8** to 1
- ➔ set **code dial 9** to 1

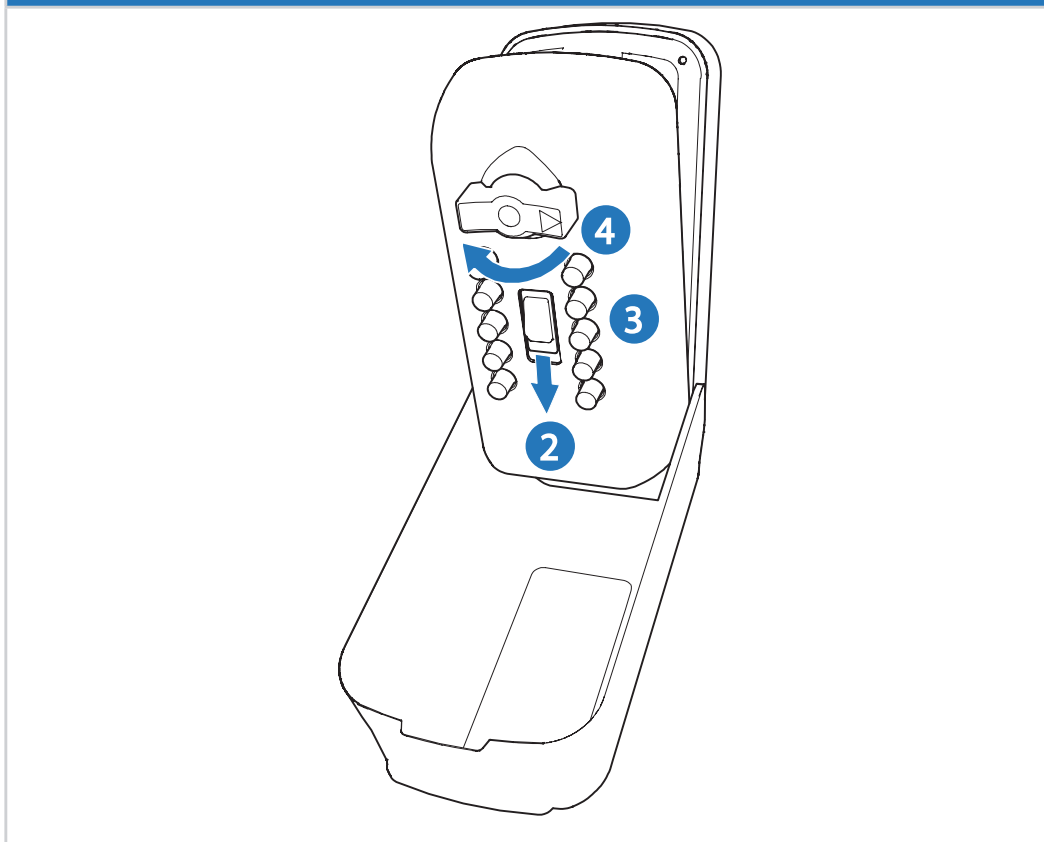
**⚠ Please make sure any digits NOT used in the code are set to '0'.**



## 4.3 Checking the code

1. Place the code change tool back.
2. Pull the clear button down and release (see **Image 7**).
3. Enter your code. Make sure the buttons click.
4. Rotate the open dial 180° clockwise to the unlock symbol.

Image 7



If the latch retracts, the code has been set correctly.

5. Hold the lid closed.
6. Rotate the dial 180° anti-clockwise to the locked symbol to lock the key safe.

If the device has been locked correctly, you will hear a click.

## 5 Installing on a wall

Scan QR code on the front of your key safe for handy video resources.



The Tammo Pro can be installed in one of two ways.

- XL Security Screws & Wall plugs- 100mm screws and wall plugs achieve B1 security approval against LPS1175 on brickwork, concrete or stone and on \*rendered walls, inclusive of render up to 20mm deep. The screws and wall plugs may cause damage to a \*\*single skin wall. We highly recommend that you use the XL Security screws and wall plugs, if possible, to achieve the highest security certification.

- Standard Security Screws - 60mm masonry screws achieve A10 security approval against LPS1175 on brickwork, concrete or stone. The screws are recommended to be used on \*\*single skin walls.

LPS1175 B1 security approval is the higher of the two options.

Care should be taken if using XL Screws & Wall plugs- please ensure you have adequate depth for the longer holes. If you have cavity wall construction, please check there aren't any pipes, insulation or cables.

\* Rendered walls- the walls are covered by sand and cement, a lime based, or a synthetic resin based coloured render.

\*\* Single skin walls- the walls are made up of only one layer of brick. These will typically be garden or garage walls.

WPS001FK - XL Security Screws & Wall plugs

MPK311 - Standard Security screws

## 5.1 XL Security Screws & Wall plugs

### 100mm - B1

To mount the Tamo Pro to a wall, the following tools are needed:

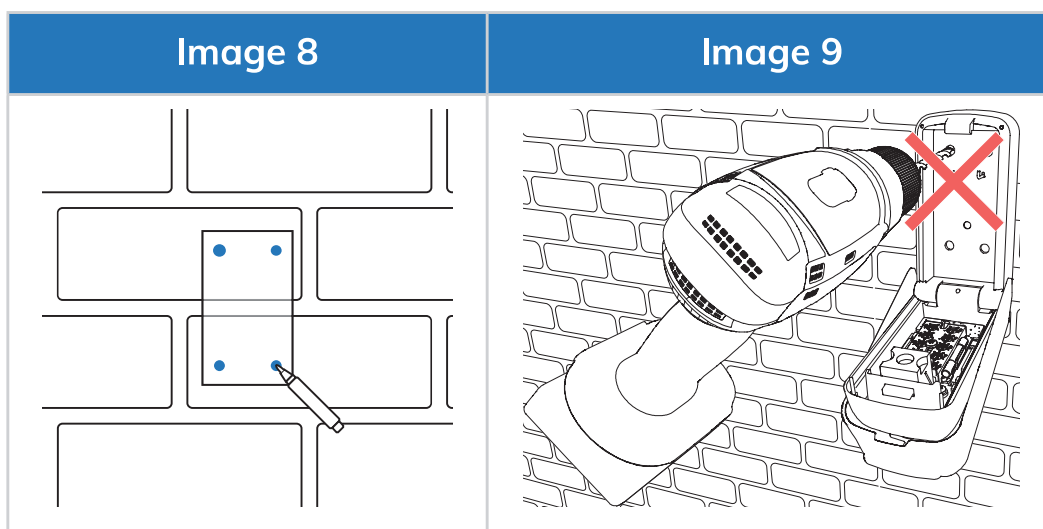
- Marking template (included)
- 8mm masonry drill bit (at least 110mm length)
- 4mm masonry drill bit (for pilot holes, at least 110mm length)
- Drill
- Marker pen or pencil
- T30 Torx screwdriver
- Spirit level
- Safety goggles (recommendation)
- Dust pan
- Brush
- Hammer

Hold the key safe up to the brick where you would like to install the key safe, ensure that the key safe doesn't move or rock and is at least 150mm (6 inches) from an external corner. The key safe must sit flush to the wall as this avoids the key safe from warping.

Hold the marking template at the desired location on the wall and mark the holes on the surface (see **Image 8**).

**⚠ Do not use the key safe to mark/drill the holes as the unit will fill with brick dust and may fail to work (see Image 9).**

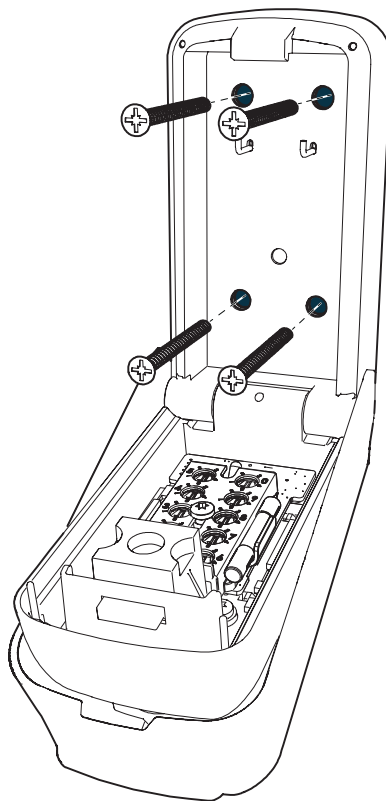
If installing on brick, try to ensure the holes line up with the horizontal centre of the surface of each brick.



- Set the marking template aside.
- Mark up both of the drills to 110mm in length.
- Put on eye protection.
- Using the 4mm masonry drill bit, drill 4 pilot holes to 110mm depth into the brick. Using the 8mm masonry drill bit, drill the newly made pilot holes.
- Clean out dust and debris by blowing gently into the holes.

- Partially insert the screws into the wall plugs. The wall plugs should then be pressed firmly into the wall, the use of a hammer may be needed. The wall plugs should be flush with the wall.
- Remove screws using a T30 Torx screwdriver
- Place the Tamo Pro over the holes.
- Use the four indicated screws (see **Image 10**).

Image 10



- Drive the Screws directly in to the wall using a T30 Screwdriver, a Ratchet or power tool can be used, however care must be taken not to overtighten the screws. Final tightening should be done by hand.
- Tighten the screws until the heads are snug against the back of the key safe.

**⚠ Do not over-tighten the screws.**

- Pull down the clear button.
- Enter the code.
- Rotate the dial 180° anti-clockwise.
- Close the Tamo.
- Close the weather cover.

## 5.2 Standard Security Screws 60mm – A10

To mount the Tamo Pro to a wall, the following tools are needed:

- Marking template (included)
- 5mm masonry drill bit (at least 70mm length)
- Drill
- Marker pen or pencil
- T30 Torx screwdriver
- Spirit level
- Safety goggles (recommendation)
- Dust pan
- Brush

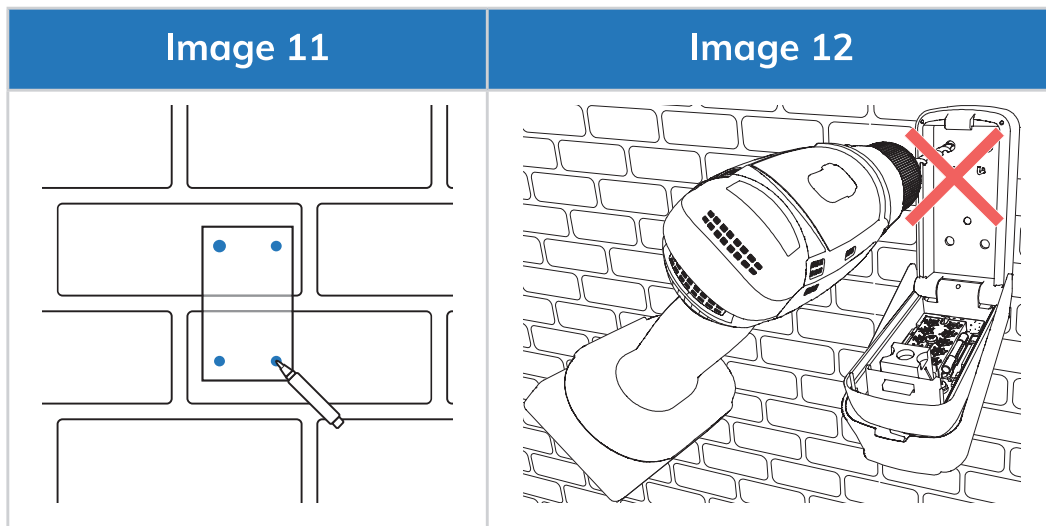
Hold the key safe up to the brick where you would

like to install the key safe, ensure that the key safe doesn't move or rock and is at least 150mm (6 inches) from an external corner. The key safe must sit flush to the wall as this avoids the key safe from warping.

Hold the marking template at the desired location on the wall and mark the holes on the surface (see **Image 11**).

**⚠ Do not use the key safe to mark/drill the holes as the unit will fill with brick dust and may fail to work (see Image 12).**

If installing on brick, try to ensure the holes line up with the horizontal centre of the surface of each brick.

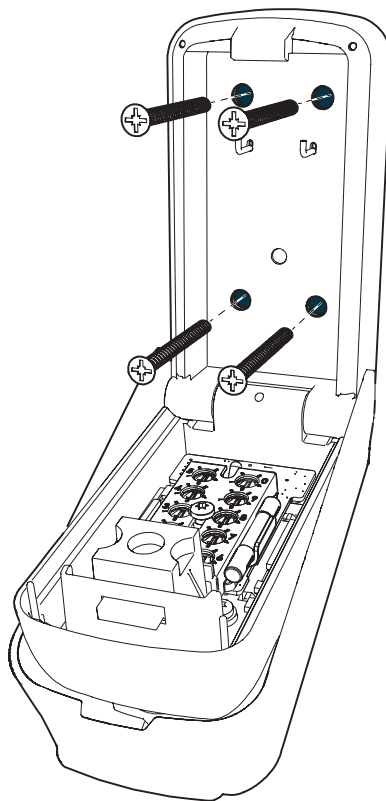


- Set the marking template aside.
- Mark up the drill to 70mm in length.
- Put on eye protection.



- Drill four holes to a depth of at least 70mm. Failure to drill deep enough can result in a snapped screw.
- Clean out the dust and debris from the holes by blowing gently into the holes.
- Place the Tamo Pro over the holes.
- Use the four included Standard Security screws (see **Image 13**).

Image 13

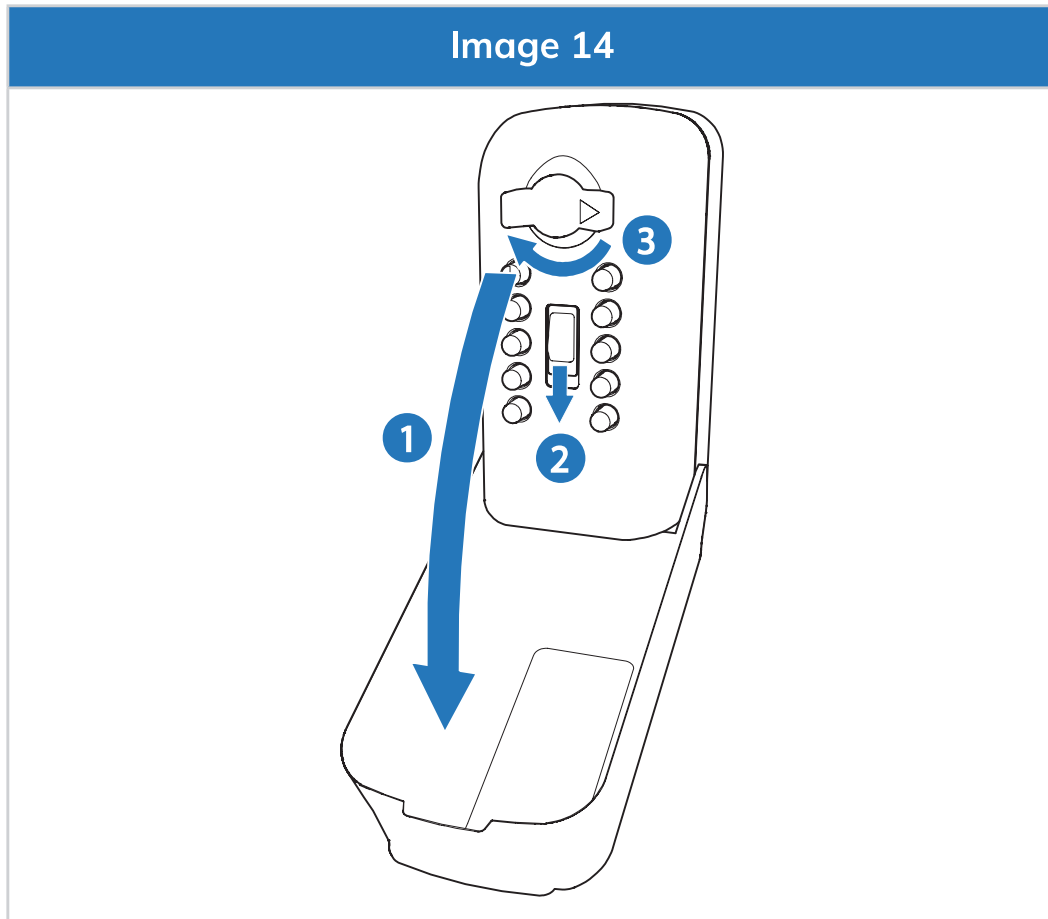


- Drive the screws directly into the brick using a T30 Torx screwdriver. **Do not use power tools.**
  - Tighten the screws until the heads are snug against the back of the key safe.
- ⚠ Do not over-tighten the screws.**
- Close the Tamo.
  - Close the weather cover.

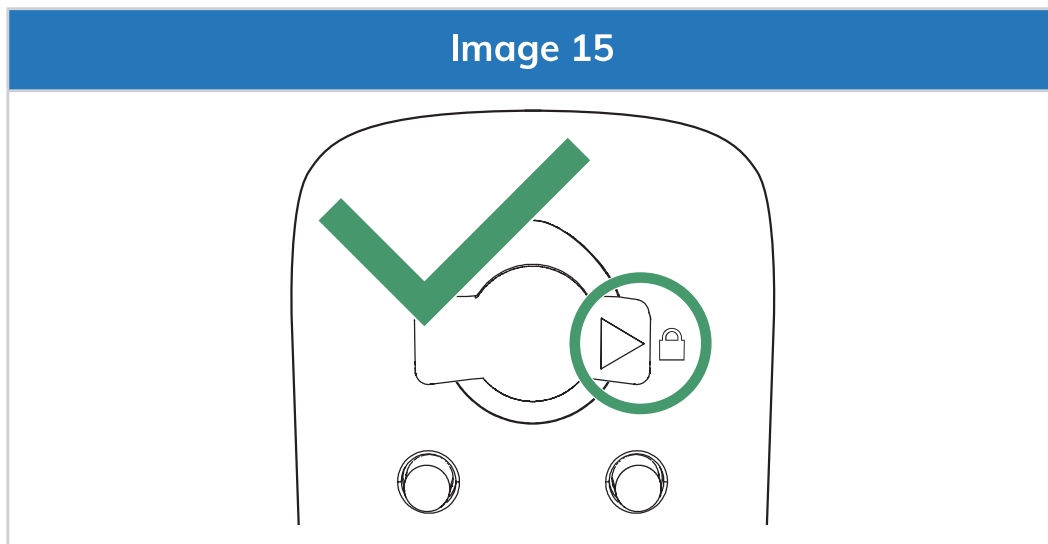
# 6 Using your Tamo Pro

## 6.1 Opening/unlocking

1. Open the weather cover (see **Image 14**).

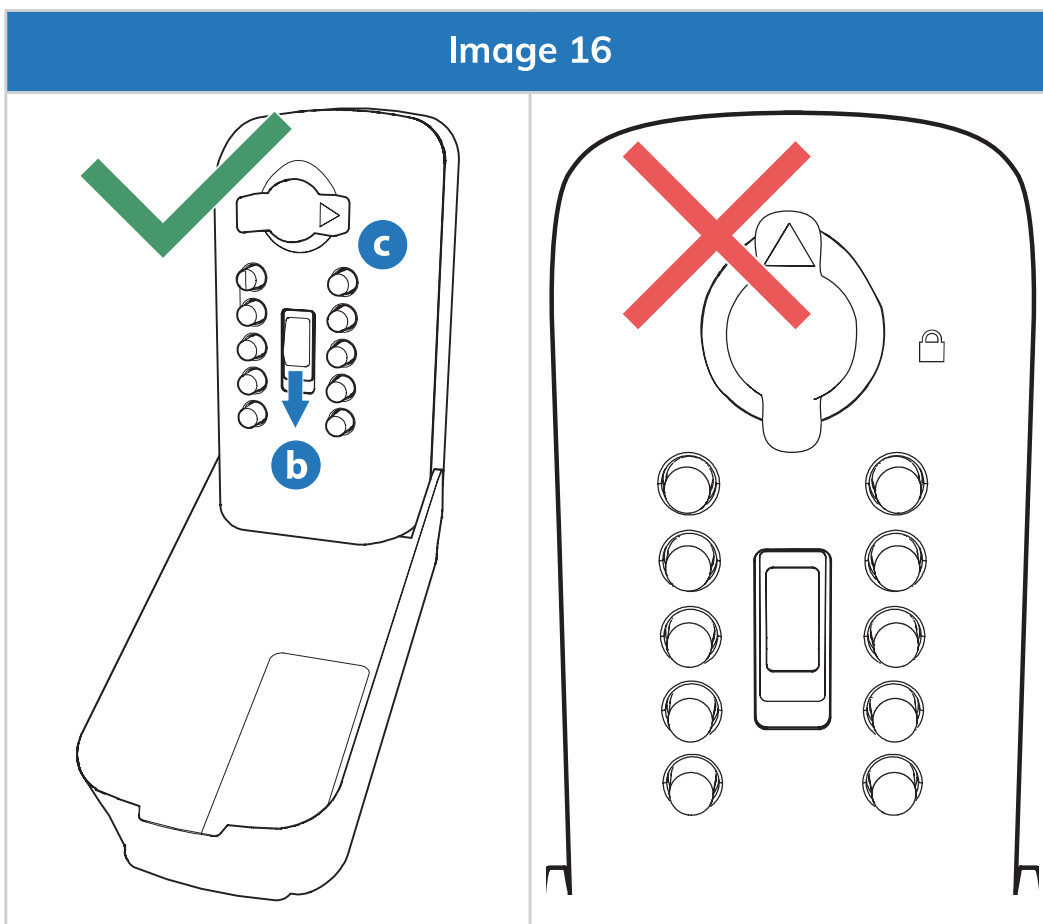


2. Ensure the arrow is pointing at the locked symbol (see **Image 15**).



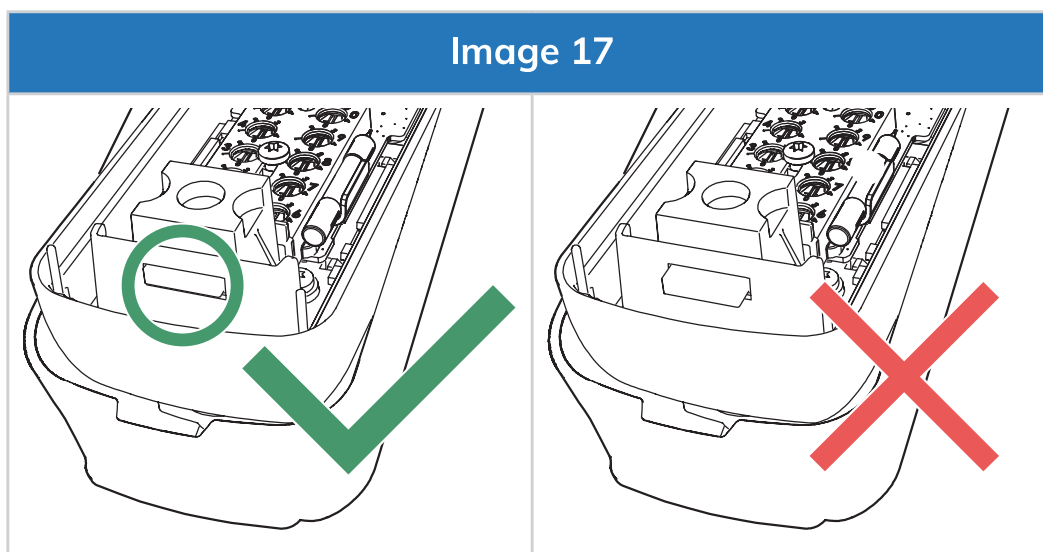
3. Pull down the clear button.
4. Enter your code.
5. Rotate the open dial 180° clockwise towards the unlock symbol to open.
6. Open the key safe.
7. If the key safe doesn't open:
  - a. Check you have the correct code.
  - b. Clear any previous attempts by pressing down the clear button.
  - c. Ensure the arrow is pointing at the locked symbol.
  - d. Try again (see **Image 16**).

Image 16



## 6.2 Closing/locking

1. Make sure that the latch is not out (see **Image 17**).



2. Close the lid.
3. Rotate the open dial 180° anti clockwise to lock.

If the device has been locked correctly, you will hear a click.

## 7 Maintenance

### 7.1 Cleaning

Clean the exterior with a damp cloth with mild detergent.

Clean the interior with a dry cloth only.

## 7.2 Spare parts

Spare parts are available, such as weather covers and fixings, if your product needs to be moved. See the table below for an overview of common spare parts.

Name	Part number
Weather cover	910004
Fixings - Tamo Pro	A10 using Standard Security Screws - MPK311 B1 using XL Security Screws & Wall plugs - WPS001FK

Illuminated module (PCB)	910001
Marking template	MPK303
5mm masonry drill bit + T30 screwdriver for fixing Standard Security Screws	AP001
8mm masonry drill bit + 4mm masonry drill + T30 torx screwdriver bit for fixing XL Security Screws & Wall plugs	AP003

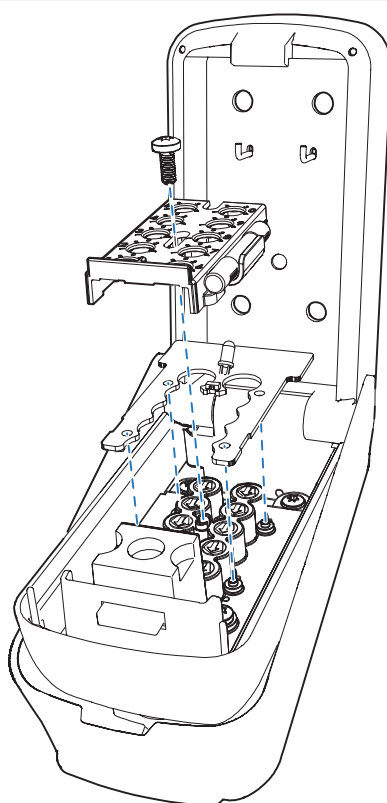
For customer service and support please contact the manufacturer using the contact details at the front of this booklet.

## 7.3 Replacing the illumination module

The battery should last 5 years if is used 4 times a day. Once the battery does stop working, your key safe will still continue to function, as the mechanical operation and security are not affected by the battery. Replacement light modules are available, please contact customer support if this is required.

1. Open the weather cover and key safe lid.
2. Remove the screw securing the illumination module (see **Image 18**).

Image 18



3. Remove the code cover.
4. Remove the old illumination module.
5. Place the new illumination module over the four retaining lugs.

6. Replace the code cover.
7. Replace the screw of the illumination module.
8. Close the lid and weather cover.

## 8 Disposal

Please follow the locally applicable guidelines when disposing of the packaging materials, key safe and illumination module. The key safe illumination module contains a battery and should be disposed of separately from household waste and recycled through a recycling centre.

## 9 Warranty

We offer a 2-year warranty on the Tamo including the illumination module. However if you register the product on our website, this can be extended to 5 years for mechanism only. Please ensure product is installed and used as described in this manual to preserve the warranty.

Scan the QR code to register your product for extended warranty.



## Granted patents

<b>Territories</b>	<b>Patent number</b>
United Arab Emirates	5567
Europe (AT BE CH DE DK ES FR GB IE IT LU LI NL NO SE)	3 241 960
Europe (AT BE CH DE DK ES FR GB IE IT LU LI NL NO SE)	3 404 173
Australia	2017260052
China	ZL201780038224.3
Hong Kong	HK1240992
India	456239
USA	10 047 542
USA	10 718 136



## Pending applications

EN

<b>Territories</b>	<b>Patent number</b>
Canada	3 022 692
New Zealand	748525
South Africa	2018/07209
Australia	2022369450
Canada	3 235 881
Europe (AL, AT, BE, BG, CH, CY, CZ, De, DK, EE, ES, FI, FR, GB, GR, HR, HU, IE, IS, IT, LI, LT, LU, LV, MC, ME, MK, MT, NL, NO, PL, PT, RO, RS, SE, SI, SK, SM, TR)	22793455.1
United Kingdom	2115283
USA	Patent pending

This page is intentionally left blank.

This page is intentionally left blank.



**The Key Safe Company**

Unit 4 - 5 Nunnery Park  
Hornhill Road, Worcester  
Worcestershire, WR4 0SX

**[www.keysafe.co.uk](http://www.keysafe.co.uk)**

[hello@keysafe.co.uk](mailto:hello@keysafe.co.uk)

+44 (0) 330 363 0303

