

Tamo

Keysafe with illuminated multi-push buttons

Installation and Manual

EN – Original instructions

Contents

1	Introduction	6
1.1	Intended use	6
1.2	Used symbols	6
2	Safety instructions	7
3	Specifications	7
4	Setting a code	8
4.1	Choosing a code	8
4.2	Setting the code	10
4.3	Checking the code	12
5	Installing on a wall	14
6	Using the device	16
6.1	Opening/unlocking	16
6.2	Closing/locking	17
7	Maintenance	18
7.1	Cleaning	18
7.2	Spare parts	18
7.3	Replacing the illumination module	19
8	Disposal	20
9	Warranty	20

Country	Status	Number
European Patent (AT BE CH DE DK ES FR GB IE IT LU NL NO SE)	Granted	3 241 960
Hong Kong	Granted	HK1240992
United States	Granted	10 047 542
Australia	Pending	2017260052
Canada	Pending	3 022 692
India	Pending	201847044853
United Arab Emirates	Pending	P6001506/2018
China	Pending	201780038224.3
New Zealand	Pending	748525
South Africa	Pending	2018/07209
European Patent (AT BE CH DE DK ES FR GB IE IT LU NL NO SE)	Granted	3 404 173
United States	Granted	10 718 136
India	Pending	202148034173
UK	Pending	2115283.0

Tamo

Installation and Manual

Preface

Dear Valued Customer,

Thank you for purchasing the Tamo key safe. This manual contains all the information to familiarise yourself with the product. We request that you read this manual carefully before you install and start using the product. This manual covers setting the code, installing the device and how to use it.

Please keep this manual safe for future reference.

If you have any queries please contact us at:

The Key Safe Company

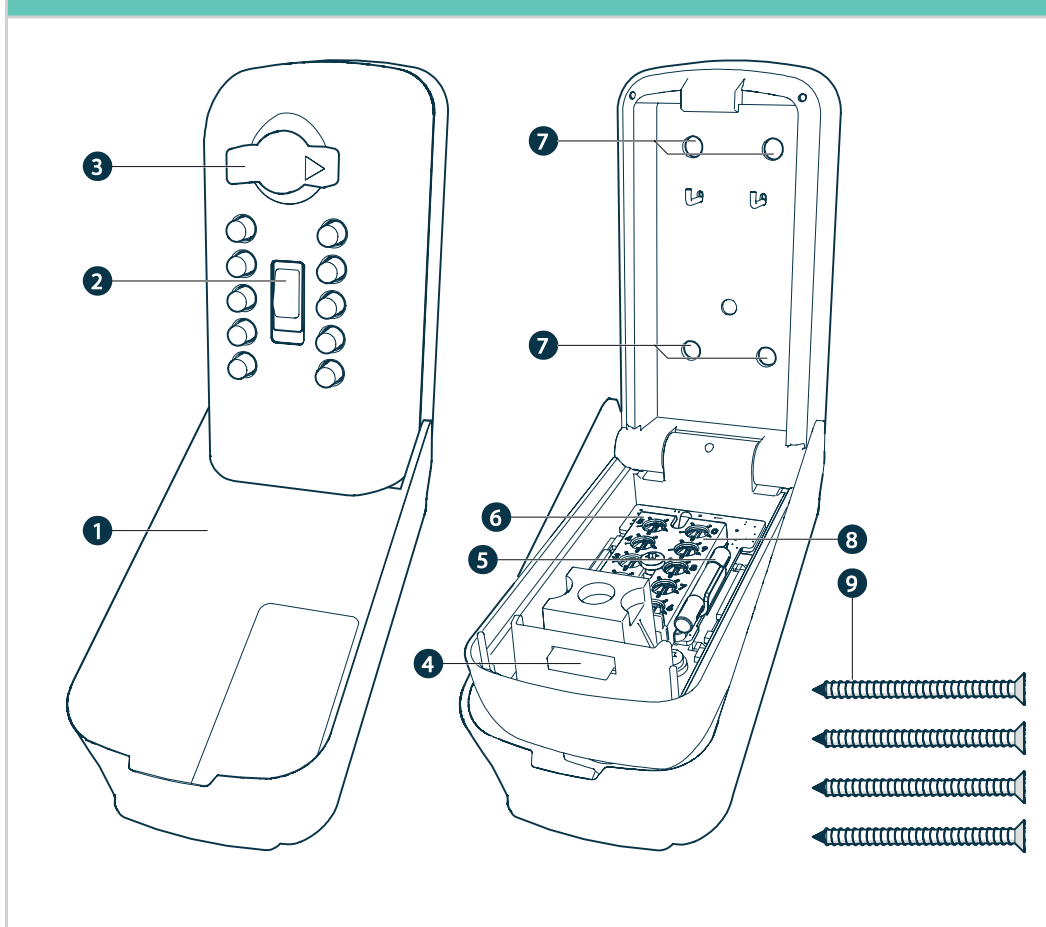
Unit 4, Nunnery Park
Hornhill Road, Worcester
Worcestershire, WR4 0SX

www.keysafe.co.uk

support@keysafe.co.uk

+44 (0) 330 363 0303

Image 1



1. Weather cover
2. Clear button
3. Open dial
4. Latch
5. Code change tool
6. Code cover
7. Mounting holes
8. Code dials
9. Masonry screws size 6, 60 mm masonry (x4)

1 Introduction

1.1 Intended use



The code buttons are illuminated for use at night. They light up when the unit is held or installed in the vertical position. When the safe is open there is an internal light in the vault.

Each button can be pressed up to 4 times giving over 9 million possible codes. There is enough space for several keys and access cards.

The device must be installed as specified in this manual with the screws supplied otherwise the security accreditation may be invalid.

1.2 Used symbols

The following symbols are used throughout the manual, on the product or the packaging:

	This symbol indicates that this product should not be thrown away with other household waste throughout the UK & EU. To prevent harm to the environment or human health by uncontrolled waste disposal, you are responsible for recycling for sustainable reuse of raw materials. To return your product, please use regular return and collection systems or contact the seller.
	This symbol indicates that the packaging is to be recycled as recommended locally.

2 Safety instructions

General

- Only use the Tamo as described in this manual.
- Do not use if visibly damaged.

Installation

- Do not mount the Tamo within 15 cm of the corner on a masonry surface.
- Make sure the Tamo is mounted flush with the surface and does not move.
- Make sure the masonry screws are only installed directly into brick or concrete to maintain the LPS1175 security certification.
- Do not install screws directly into mortar, as this will weaken the mounting.
- Do not reuse the screws when reinstalling.

3 Specifications

Product	Tamo
Part number Tamo	960002
Inner dimensions (W × H × D)	55 mm × 115mm × 21 mm
Dimensions (W × H × D)	85 mm × 160 mm × 75 mm
Weight	2.1 kg
Operating temperature	-30 °C – +50 °C
Lock type	Combination key pad lock
Possible combinations	Over 9 million codes

Vault Material	Zamak3 – zinc aluminium alloy
Screw type	4 × size 6, 60 mm masonry
Battery illuminated module	CR2032 battery
Expected lifespan of the illuminated module battery	5 years
Attack Test standard Tamo	LPS1175 issue 8 A5

4 Setting a code

4.1 Choosing a code

There is no preset or 'master' code and codes are not held by The Key Safe Company. We recommend using a minimum code of 6 digits with one of the digits repeated. For example **199**621.

Each of the digits can be used up to 4 times

Example: 2222 1984  Digit 2 is used 4 times.

2222 1982  Digit 2 is used 5 times.
This is not possible.

Write down your code and keep it in a safe place.

Count how often each digit is used in your code.

Avoid choosing a code that is easy to guess such as 123456.

Page Intentionally Blank

4.2 Setting a code

The code is based on the amount of times a digit is used. The order of the digits is not important.

See 'Choosing a code' on Page 8 for more information.

To set a code please follow the instructions below:

1. Open the weather cover (see **Image 2**).
2. Pull down the clear button and release.
3. Rotate the open dial 180° clockwise to open the device.
4. Rotate the open dial 180° anti clockwise with the lid open to push the latch out (see **Image 3**).
5. Make sure the latch is pushed out (see **Image 4**).

// Continued on page 12

Image 2

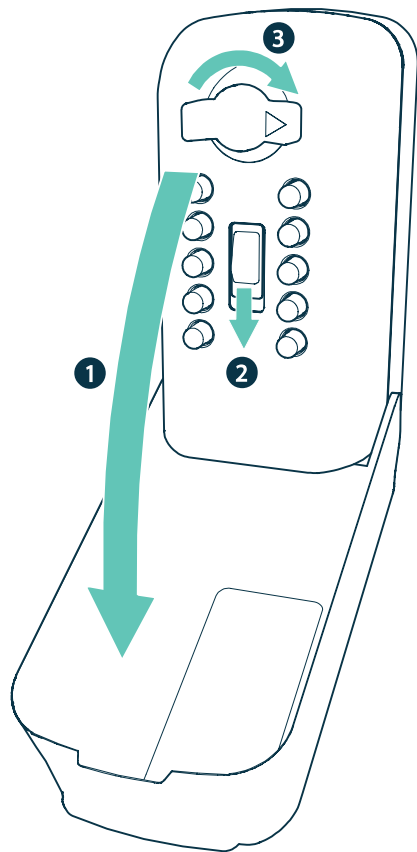


Image 3

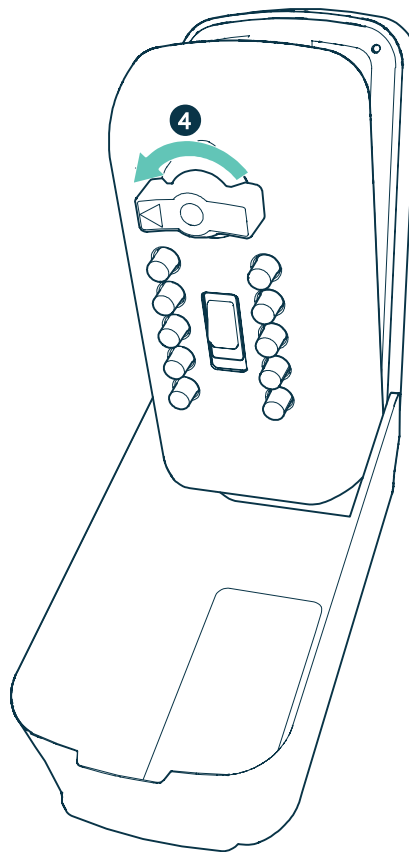
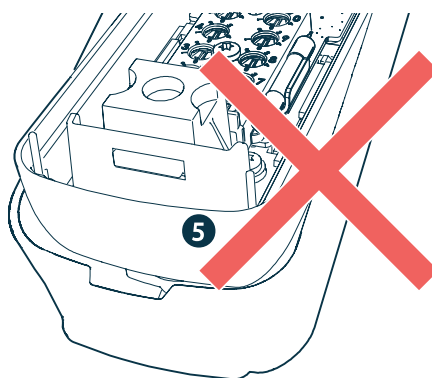
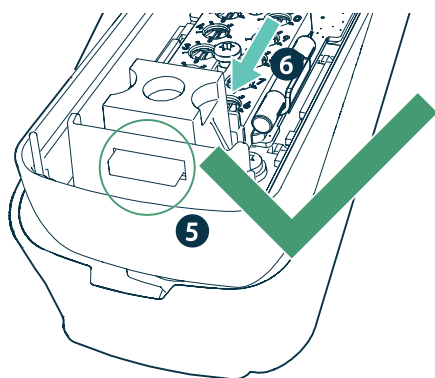


Image 4



// Setting the code (continued)

6. Slide the code cover towards the latch.
7. Take out the code change tool (**Image 5**).
8. Use the code change tool to turn the code dials of each digit to the number of times this digit is used (see **Image 6a** and **Image 6b**).

Example of an 8 digit code repeating digit 2 the maximum 4 times:

2212 1982

2 = 4× in total ➡ set **code dial 2** to 4

1 = 2× in total ➡ set **code dial 1** to 2

9 = 1× in total ➡ set **code dial 9** to 1

8 = 1× in total ➡ set **code dial 8** to 1

Please make sure any digits not used in the code are set to '0'

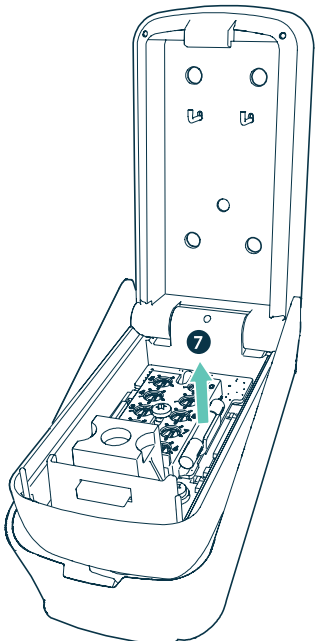
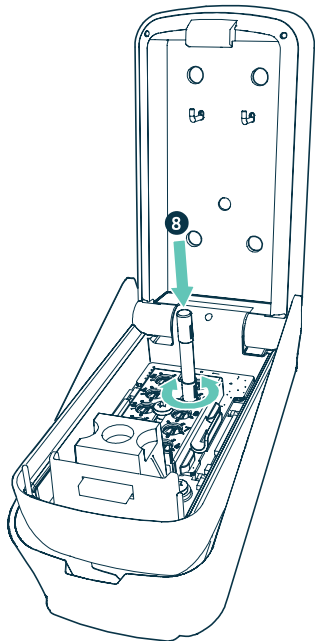
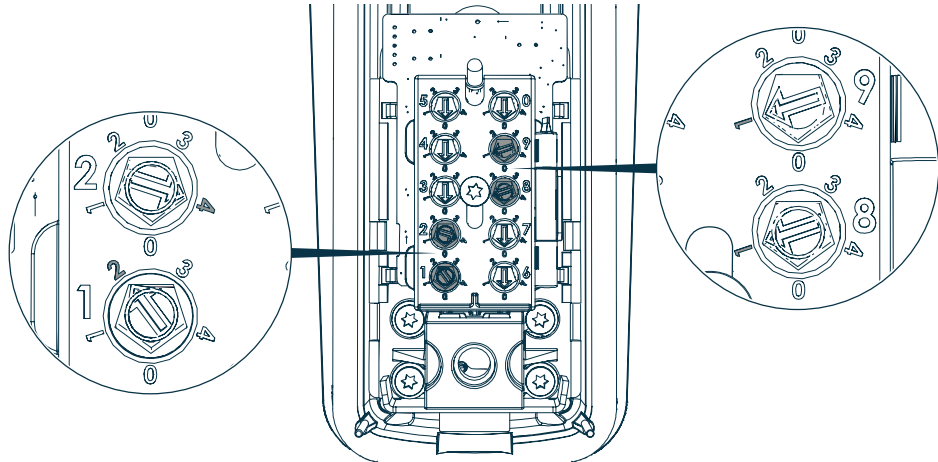
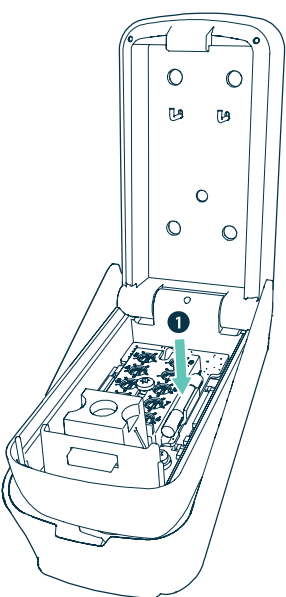
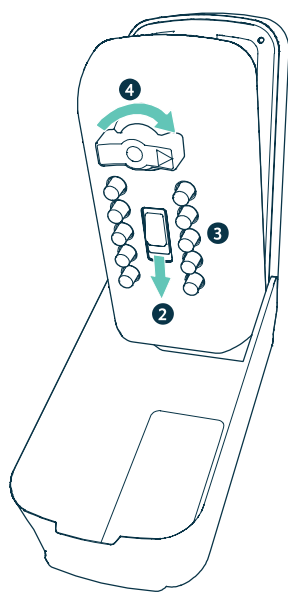
4.3 Checking the code

1. Place the code change tool back (**Image 7**).
2. Pull the clear button down and release (**Image 8**).
3. Enter your code. Make sure the buttons click.
4. Rotate the open dial 180° clockwise.

If the latch retracts the code has been set correctly.

5. Hold the lid closed.
6. Rotate the dial 180° anti-clockwise to lock.

The device has been locked correctly when you hear a click.

Image 5	Image 6a
	
Image 6b	
	
Image 7	Image 8
	

5 Installing on a wall

Please refer to www.keysafe.co.uk for installation videos

To mount the Tamo to a wall, the following tools are needed:

- 5 mm masonry drill bit
- Drill
- Marker pen or pencil
- T30 Torx screwdriver
- Marking template
- Spirit level
- Safety goggles (recommendation)
- Dust pan
- Brush

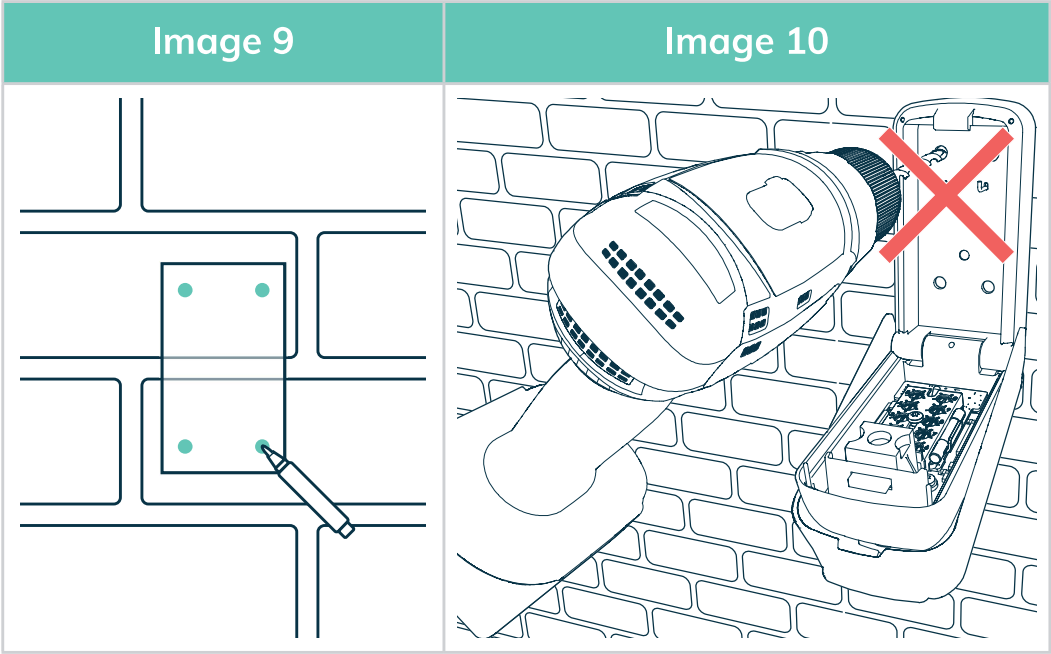
Hold the template at the desired height on the wall and mark the holes on the surface (see **Image 9**).

*** Do not use the keysafe to mark/drill the holes as the unit will fill with brick dust and may fail to work (see Image 10).**

Make sure the holes line up with the horizontal centre of the brick.

- Set the template aside.
- Put on eye protection.
- Drill four holes.

Make sure the holes are 70 mm deep. Mark the drill with tape before drilling.

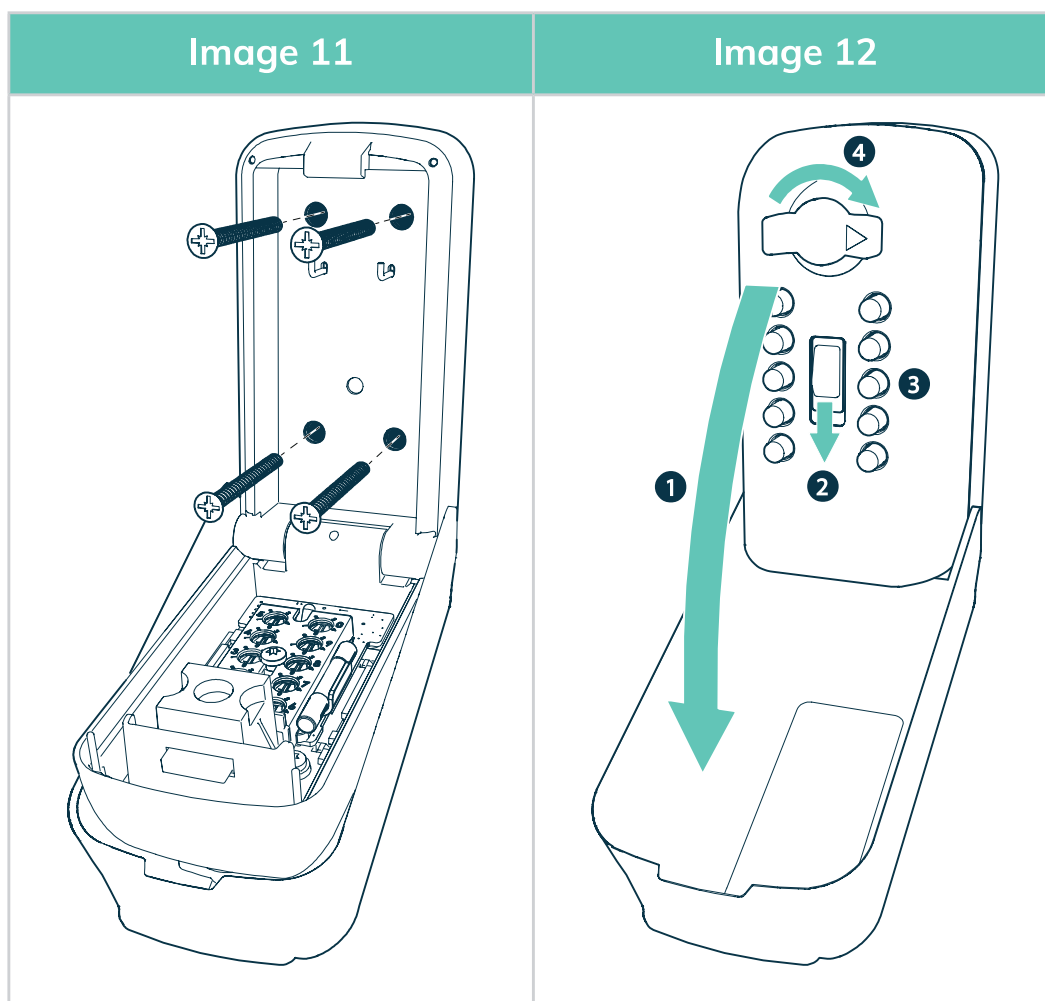


- Clean out the dust and debris from the holes by blowing gently into the holes.
- Place the Tamo over the holes.
- Use the four included screws (**Image 11**).
- Drive the screws directly into the brick using a T30 Torx screwdriver. Do not use power tools.
- Tighten the screws until the heads are snug against the back of the key safe.
- **Do not over-tighten the screws.**
- Close the Tamo and weather cover.

6 Using your Tamo

6.1 Opening/unlocking

1. Open the weather cover (**Image 12**).
2. Pull down the clear button.
3. Enter your code.
4. Rotate the open dial 180° clockwise to open.
5. If the incorrect code has been entered and the open dial is forced, the dial will unlatch from the locking mechanism and rotate freely without opening. Reset the open dial by rotating the open dial to the locked position. The open dial will snap back into place.



6.2 Closing/locking

1. Close the lid.
2. Rotate the open dial 180° anti clockwise to lock.

If the device has been locked correctly, you will hear a click.

7 Maintenance

7.1 Cleaning

Clean the exterior with a damp cloth with mild detergent.

Clean the interior with a dry cloth. Make sure to dry the unit when storing items in it after cleaning.

7.2 Spare parts

Spare parts are available, such as weather covers and fixings if your product needs to be moved. See the table below for an overview of common spare parts.

Name	Part number
Weather cover	910003
Fixings - Tamo	MPK311

Illuminated module (PCB)	910001
Installation template	MPK303
5 mm masonry drill bit + T30 screwdriver	AP001

For customer service and support please contact the manufacturer using the contact details at the front of this booklet.

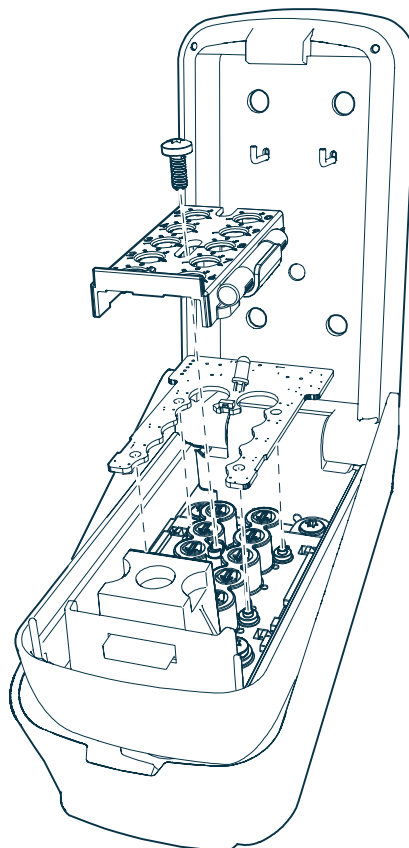
7.3 Replacing the illumination module

EN

The battery should last 5 years but this will not affect the normal operation and security of your device. Replacement light modules are available.

1. Open the weather cover and safe.
2. Remove the screw securing the illumination module (**Image 13**).
3. Remove the code cover.
4. Remove the old illumination module.
5. Place the new illumination module over the four retaining lugs.
6. Replace the code cover.
7. Replace the screw of the illumination module
8. Close the lid and weather cover.

Image 13



8 Disposal

Please follow the locally applicable guidelines when disposing of the packaging materials and illumination module.

9 Warranty

We offer a 2-year warranty on the Tamo including the illumination module. Please ensure product is installed and used as described in this manual to preserve the warranty.

This page is intentionally blank



The Key Safe Company

Unit 4 Nunnery Park
Hornhill Road, Worcester
Worcestershire, WR4 0SX

www.keysafe.co.uk

support@keysafe.co.uk

+44 (0) 330 363 0303