



**LIQUID RUBBER**

# CONCRETE & STONE SEALER

APPLICATION GUIDE

1150 Eighth Line Unit 16 Oakville, ON L6H 2R4  
1-855-592-1049 | [Support@ShopLiquidRubber.com](mailto:Support@ShopLiquidRubber.com)

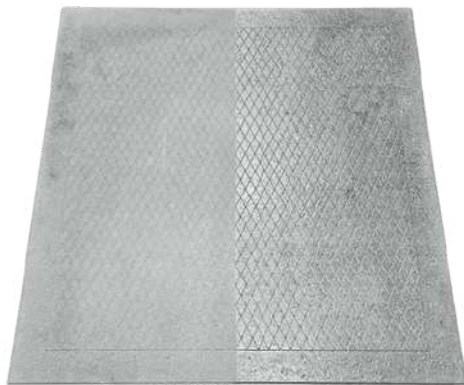
[www.ShopLiquidRubber.com](http://www.ShopLiquidRubber.com)



## PROTECT AND ENHANCE YOUR SURFACES



Liquid Rubber Concrete & Stone Sealer protects and enhances concrete and stone surfaces while preserving the natural look. It safeguards against rain, snow, salt, and other contaminants, making it ideal for driveways, patios, pavers, walkways, and outdoor stone or masonry. (Gloss may vary depending on the surface.)



Unsealed

Sealed

### STEP 1: BEFORE YOU BEGIN

#### IDENTIFY YOUR SURFACE

Liquid Rubber Concrete & Stone Sealer can be used to protect a variety of surfaces around the exterior of your home. These surfaces include but are not limited to:

- Concrete
- Masonry
- Stone

If you're not sure if your surface is suitable, contact our Product and Application Support team by email: [Support@ShopLiquidRubber.com](mailto:Support@ShopLiquidRubber.com) or phone: 1-855-592-1049

We can walk you through the whole process.

*\*Gloss level may vary depending on the surface*





## PICK THE RIGHT PRODUCTS: GATHER YOUR MATERIALS

- Liquid Rubber Concrete & Stone Sealer
- Liquid Rubber Deck & Patio Cleaner - to clean surface
- Liquid Rubber Concrete Etch - to remove laitance & efflorescence from concrete surfaces
- Brush, roller or garden sprayer

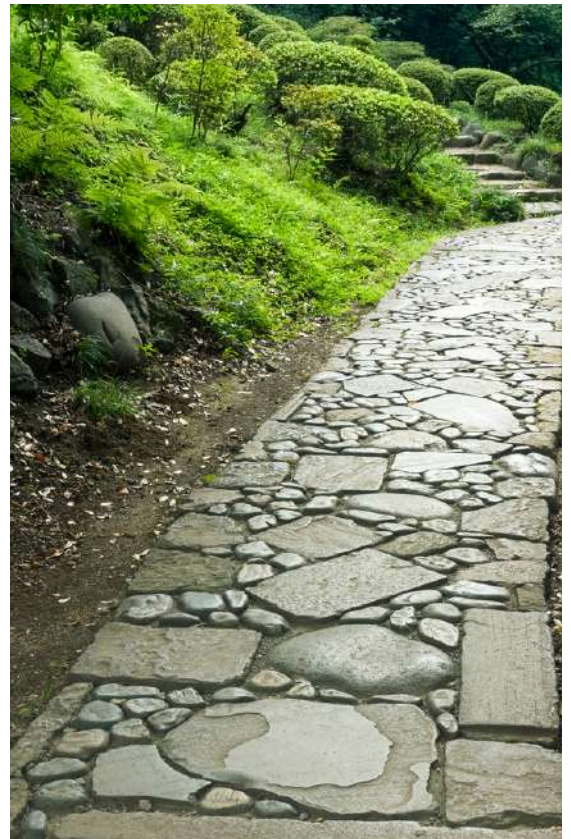
## INSPECTION

Inspect: Improperly prepared surfaces can result in the reduction of the service life and performance of the topical coating. A thorough inspection of the substrate prior to beginning work should be performed to ensure adhesion and the integrity of the coating. At a minimum, the following must be confirmed:

1. **Ensure the surface** is clean, sound, and free of cracks, loose particles, dirt, oil, grease, old flaking paint, or failed sealers.
2. **Moisture Test:** Tape a piece of plastic (about 18" x 18") to the concrete for 24 hours. If you find moisture underneath, let the area dry longer before sealing. *\*For more information on how to perform a moisture test [click here](#)*
3. **Existing Sealer:** If there's already a sealer in place, test a small spot first. Some existing sealers may not be compatible or may prevent that "wet look."



**Sealed vs unsealed**





## STEP 2: ONCE YOU HAVE YOUR SUPPLIES

### WEATHER & WHEN TO APPLY

- Apply in dry, warm temperatures above 10°C/50°F including overnight temperatures
- Do not apply in wet conditions or if rain, fog or dew is forecasted within 24 hours
- Avoid hot, direct and intense sun
- Below 80% humidity
- Make sure what you are coating is at least 5 degrees above the dew point of the environment ([Click here for more info](#))

### SET UP & CLEAN UP

Stay organized and limit clean up by following these setup tips:

1. Set out a tarp or large piece of cardboard to keep containers and tools on when not in use.
2. If there is a spillage, soak up as much material as possible with rags.
3. If the spillage dries, scrape it off with a razor/scrapper/etc, use mineral spirits/white spirits to weaken the product, and then scrub with a wire brush.
4. Wrap tools in plastic to keep them moist in between coats (kitchen wrap is fine). Best to use disposable brushes and rollers.
5. Do not use solvents or solvent based cleaners, adhesives, and paints near your working area.
6. Refer to the product Safety Data Sheet for personal protective equipment recommendations.



## STEP 3: PREPARE THE AREA

### PREPARATION & CLEANING

- Remove any old or unsuitable coatings, dust, dirt, mold, moss, mildew, organic growth, salt deposits, or debris.
- For concrete, remove powdery or salty residues with Liquid Rubber Concrete Etch. Test a small, hidden area first.
- Clean the surface by pressure washing or using a suitable cleaner (*use a degreaser for oily spots and monitor for a few days as embedded oil stains can bleed back up to the surface*).
- Allow the surface to dry thoroughly (usually 24-48 hours) before applying the sealer.
- Mask off areas you don't want the sealer to be applied to.



## STEP 4: APPLY THE SEALER

### HOW TO APPLY LIQUID RUBBER CONCRETE & STONE SEALER

Once your preparation is complete, clean, and dry you can begin your full field application.

1. **Cut In:** Start by applying sealer around edges, corners, and details with a brush. Let it dry to the touch.
2. **Main Application:** Work in small, manageable sections (about 10 ft x 10 ft). Apply with a brush, roller, rag, or a garden sprayer. After spraying, back-roll or rub it in with a rag to avoid puddles. Maintain a “wet edge” so sections blend smoothly.
3. **Inspect as You Go:** Check for bubbles, missed spots, or pooling. Repair as needed.
4. **Remove Tape** while Sealer is still wet and reapply for each coat
5. **Cure Time:** The sealer dries to touch in about 1-2 hours and fully cures in 24-48 hours.

*\*You'll need a minimum of two coats. The first coat soaks in; the second coat will spread further.*

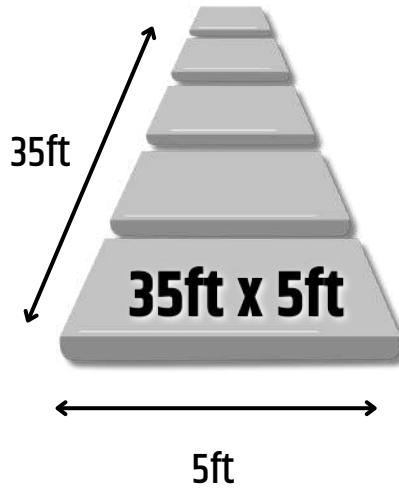


### HELPFUL TIPS

- Use disposable gloves
- Store unused product above 5°C/41°F
- It is always a good idea to apply a small test patch in an inconspicuous area to ensure adequate adhesion prior to full application.
- Do not let products freeze in their containers
- If you allow your sealer to dry too much, you can score/cut along the masking tape line before pulling to prevent lifting the coating
- Apply each coat in an alternate direction to the last coat to ensure even coverage
- Do not allow the sealer to freeze before it cures



=

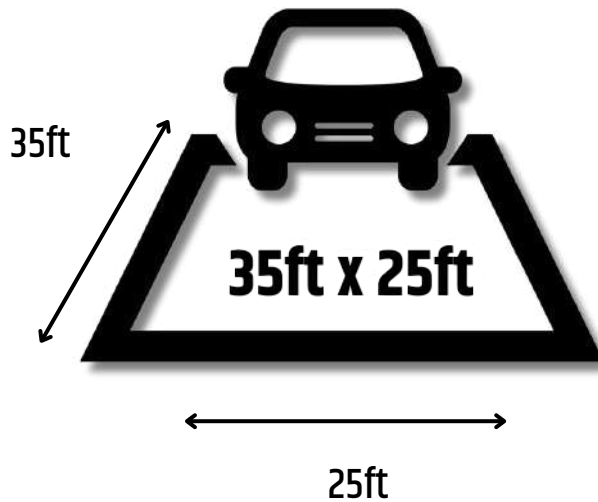


Apply 1 gallon for:

= **175ft<sup>2</sup>**



=



Apply 5 gallons for:

= **875ft<sup>2</sup>**



**DECK & PATIO CLEANER**

COVERAGE

1 Gallon = 200-400 FT<sup>2</sup>



**CONCRETE ETCH**

COVERAGE

160-240 ft<sup>2</sup>