

# zogics

## Citrus + Aloe



## SOLERA DISPENSERS

These versatile and eco-friendly dispensing fixtures ensure a professional and clutter-free presentation for commercial facilities like gyms, spas, and hotels.



**TAMPER-PROOF  
LOCKING KEY**









**LASTING INVESTMENT  
THAT SAVES MONEY**



**REDUCE  
LANDFILL WASTE**



**CUSTOM ZOGICS  
CITRUS & ALOE LABELS**

DISPENSER	SKU #	PRODUCT DETAILS
	<b>39334-R3-C-CA</b>	Satin Rectangle 3-Chamber Refillable Dispenser (Shampoo, Conditioner, and Body Wash)
	<b>39388-R3-C-CA</b>	Black Rectangle 3-Chamber Refillable Dispenser (Shampoo, Conditioner, and Body Wash)
	<b>39334-O3-C-CA</b>	Satin Oval 3-Chamber Refillable Dispenser (Shampoo, Conditioner, and Body Wash)
	<b>39388-O3-C-CA</b>	Black Oval 3-Chamber Refillable Dispenser (Shampoo, Conditioner, and Body Wash)
	<b>39234-R3-C-CA</b>	Satin Rectangle 2-Chamber Refillable Dispenser (Shampoo and Conditioner)
	<b>39288-R3-C-CA</b>	Black Rectangle 2-Chamber Refillable Dispenser (Shampoo and Conditioner)

DISPENSER	SKU #	PRODUCT DETAILS
-----------	-------	-----------------



**39234-03-C-CA**

Satin Oval 2-Chamber Refillable Dispenser  
(Shampoo and Conditioner)



**39288-03-C-CA**

Black Oval 2-Chamber Refillable Dispenser  
(Shampoo and Conditioner)

## COLOR OPTIONS



Satin Finish



Black

## BOTTLE SHAPE OPTIONS

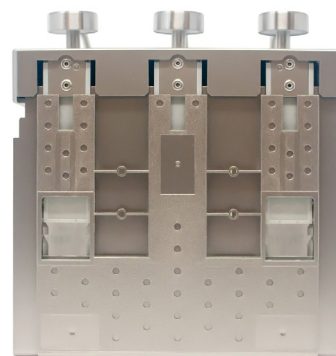


Rectangular



Oval

## ABS BRACKETS + LOCKING FEATURE



## SPECIFICATIONS

<b>WEIGHT</b>	2 lbs (3-Chamber), 1.5 lbs (2-Chamber)
<b>DIMENSIONS</b>	6" d x 12" w x 12" h (3-Chamber) 6" d x 8" w x 12" h (2-Chamber)
<b>CAPACITY</b>	12 oz each chamber
<b>COLOR</b>	Satin finish or black

## FEATURES

- Designed for commercial settings, including gyms, hotels, and spas
- Durable stainless steel pumps for reliable operation
- Lightweight, robust ABS plastic body
- Lockable, tamper-proof gate for secure refills
- Refillable chambers reduce single-use plastic waste
- Detachable chambers for easy maintenance
- Simple installation with included adhesive and two-way tape



Questions? We love to help!

zogics.com • hello@zogics.com • 888.623.0088