

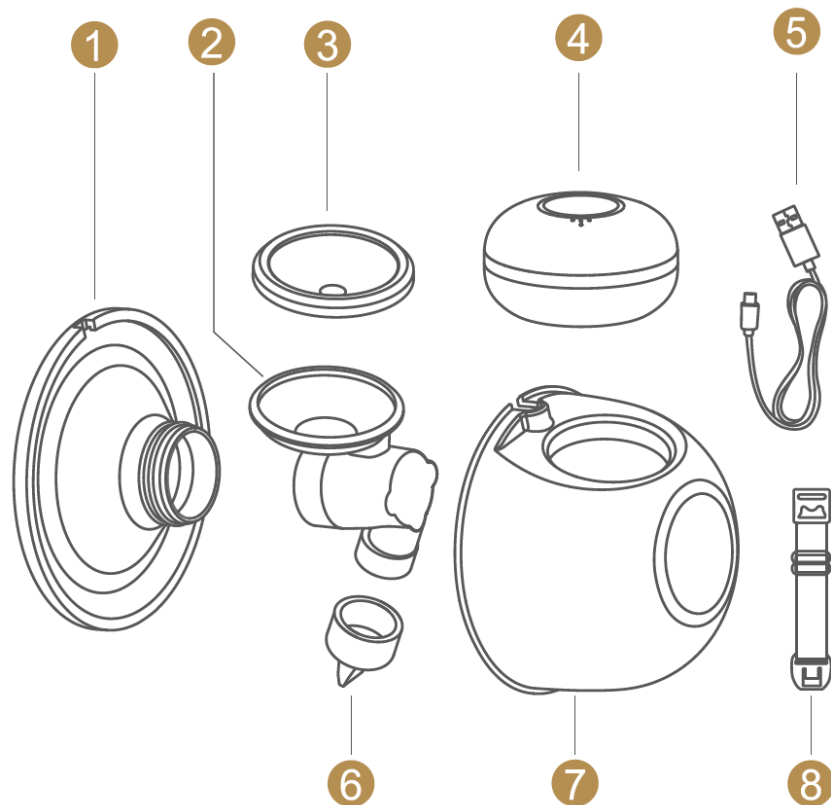
# Mumilk

Lighter, Quieter  
And more comfortable



Read this user manual carefully before  
suing the Mumilk breast pump, and save  
it for future reference

# Overview



## Parts

**1 Flange**

**2 Linker**

**3 Diaphragm**

**4 Motor**

**5 Charging cable**

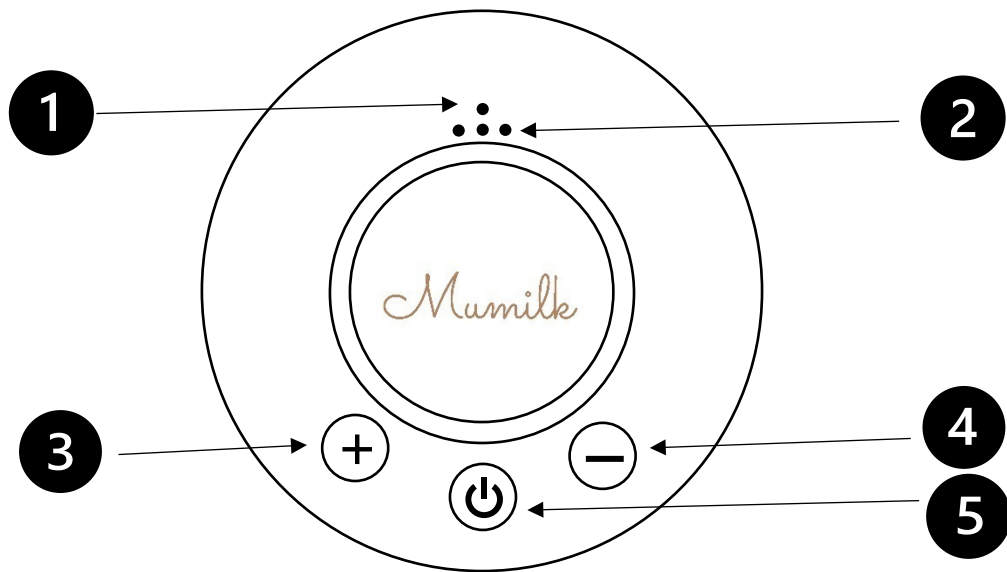
**6 Valve**

**7 Milk catcher**

**8 Bra adjustment buckle**

# Control Panel

## Motor control panel introduction



**1 Battery indicator light**

**2 Mode indicator light**

**3 Level Up button**

**4 Level Down button**

**5 Power button/mode selection button**

### Note

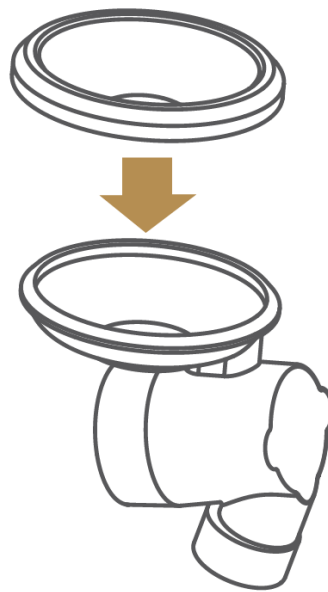
This product has a build-in lithium battery. When the battery indicator flashes red, we recommend you use a certified 5V==1A adapter to charge the pump motor.

## Cleaning and sterilizing

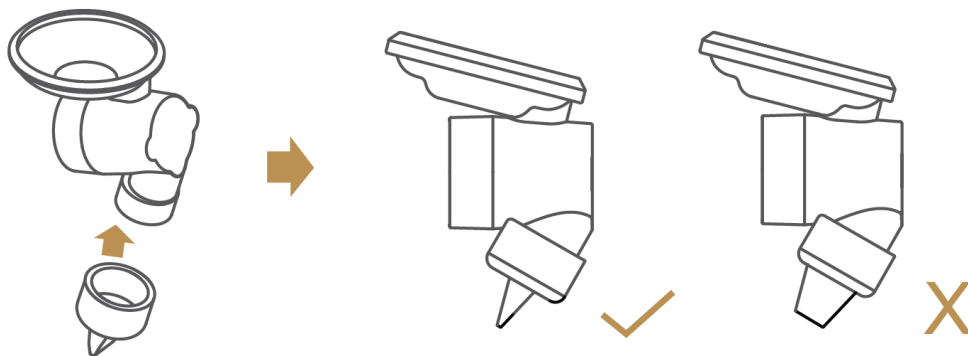
- **For the first time and before each use, you must disassemble, wash and sterilize all the breast pumps that come into contact with breast milk.**
- **Never wash or sterilize the pump motor, it should never come in contact with breast milk or any liquid. You can wipe it clean with a soft cloth.**
- **We recommend washing the parts with warm soapy water.**
- **Sterilize with your electric, steam or microwave steriliser or by putting the silicone/plastic parts in boiling water for no more than 10 minutes.**
- **Disassemble all the parts and wash and sterilise accordingly after each use.**
- **For more information refer to the *How to* video on the Mumilk website.**

# Assembling

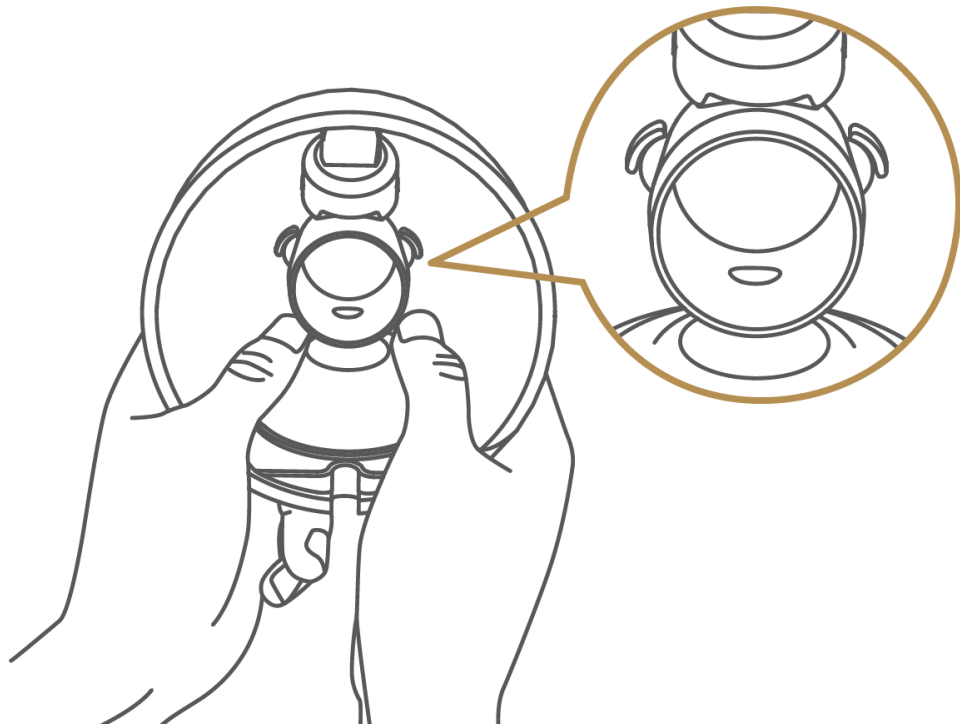
- 1) **Put the silicone diaphragm into the linker and press it with your hands to make the edges fasten tightly to ensure a perfect seal.**



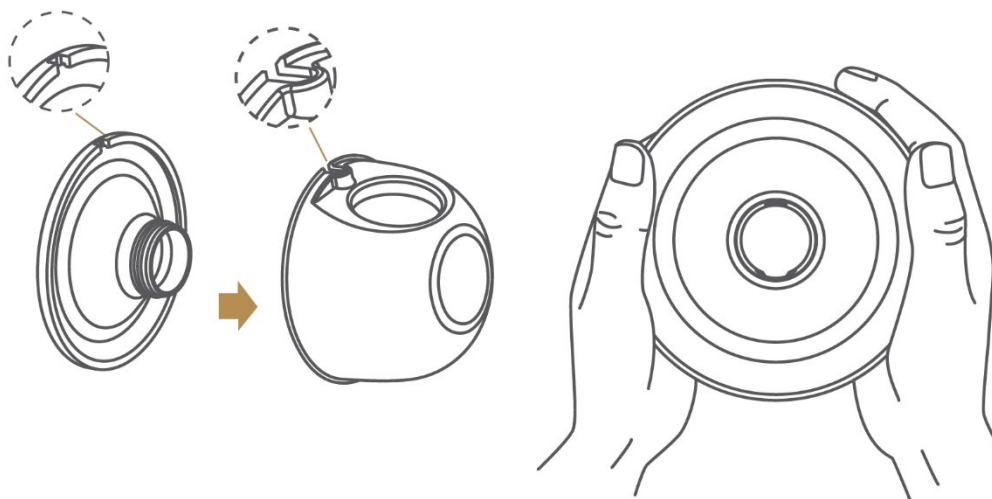
- 2) **Install the valve into the bottom of the linker, making sure it is positioned as per below**



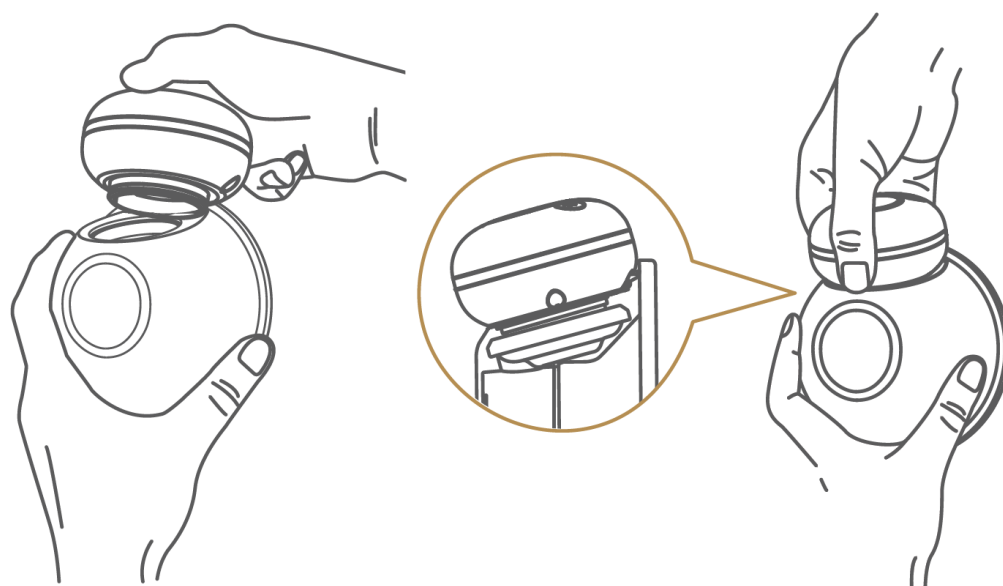
- 3) Assemble the linker to the milk catcher, making sure the diaphragm is well connected and that the 2 “c” shapes of the linker fit in the milk catcher allocated spot.**



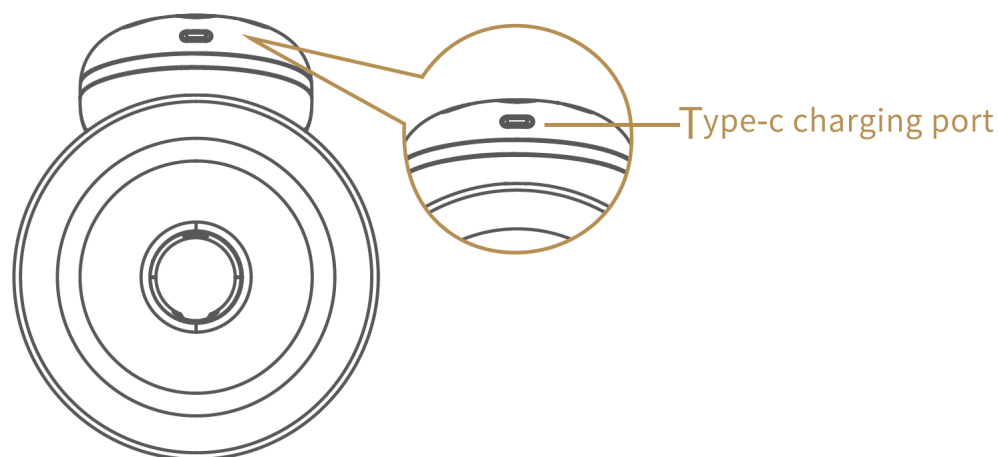
- 4) Assemble the Flange to the Milk catcher, align the deflector on the horn to ensure no leaking during pumping. Press all around with your hands to ensure a tight seal.**



- 5) Press the motor onto the milk catcher and ensure it fits perfectly and is not loose.**



- 6) Connect the USBC charging cable to the motor plug to charge the motor when flat.**



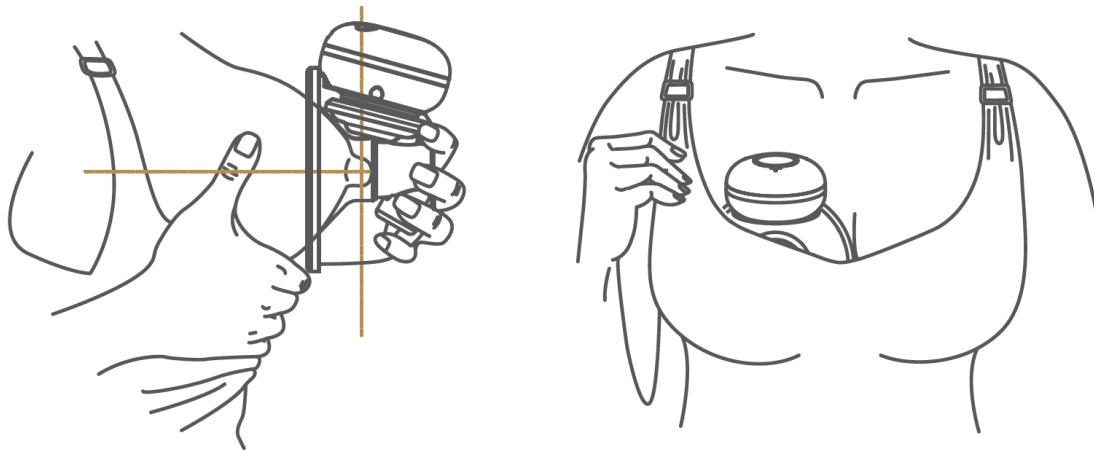
## Note

The power adapter is a common standard accessory available on the market. This product is not provided and can be purchased separately, if necessary, though most households already have one or more.



**For more information refer to the *How to* video on the Mumilk website.**

# Pumping

- 1) **Press the Flange firmly against your breast making sure your nipple is well centred. Keep the pump upright. Keep the position steady, to ensure best results.**



2)

- 3) **Long press the Power Button  to turn the pump on.  
Short press the Power Button  to switch the modes.**

**Suction mode**



**Massage mode**




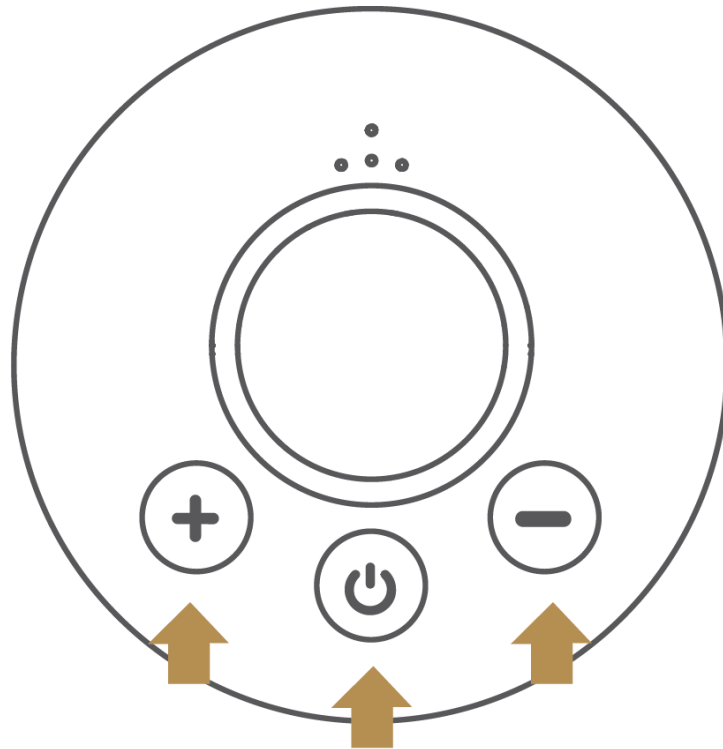
**Automatic mode**




- 4) **Use Massage mode for a few minutes to trigger milk let down.**




- 5) **Switch to Suction mode by short-pressing the Power button  then and press the Plus or Minus button to reach the suction intensity that works for you. The PRO motor has 12 intensity levels. The lights will flash when you reach the lowest or highest level.**

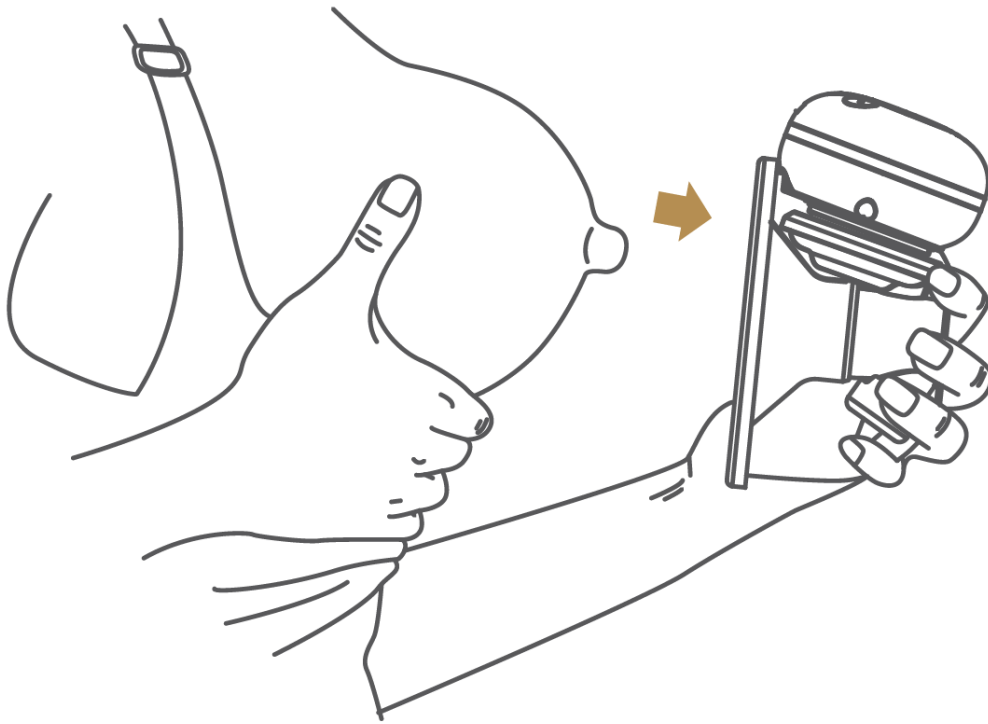


- 6) **Optional: Short press the Power button  to switch to the Automatic Mode. This mode will increase the intensity of the suction every 20 seconds. The suction of the Auto mode are much shorter than the Suction mode.**

*Note: The PRO motor has a built-in memory function, meaning next time you turn the device on it will automatically remember the suction you last use and select the same.*

*Note2: You'll find that if you long-press the plus button, the light will turn purple. This is a mode that will be more powerful and use the battery quicker as it was a mode initially made to use 1 motor linked to 2 pumps with cords. Mumilk do not offer this option as we prone to be cord-free, however, most pumps do have the purple light option. To switch back to normal mode, long-press the minus button.*

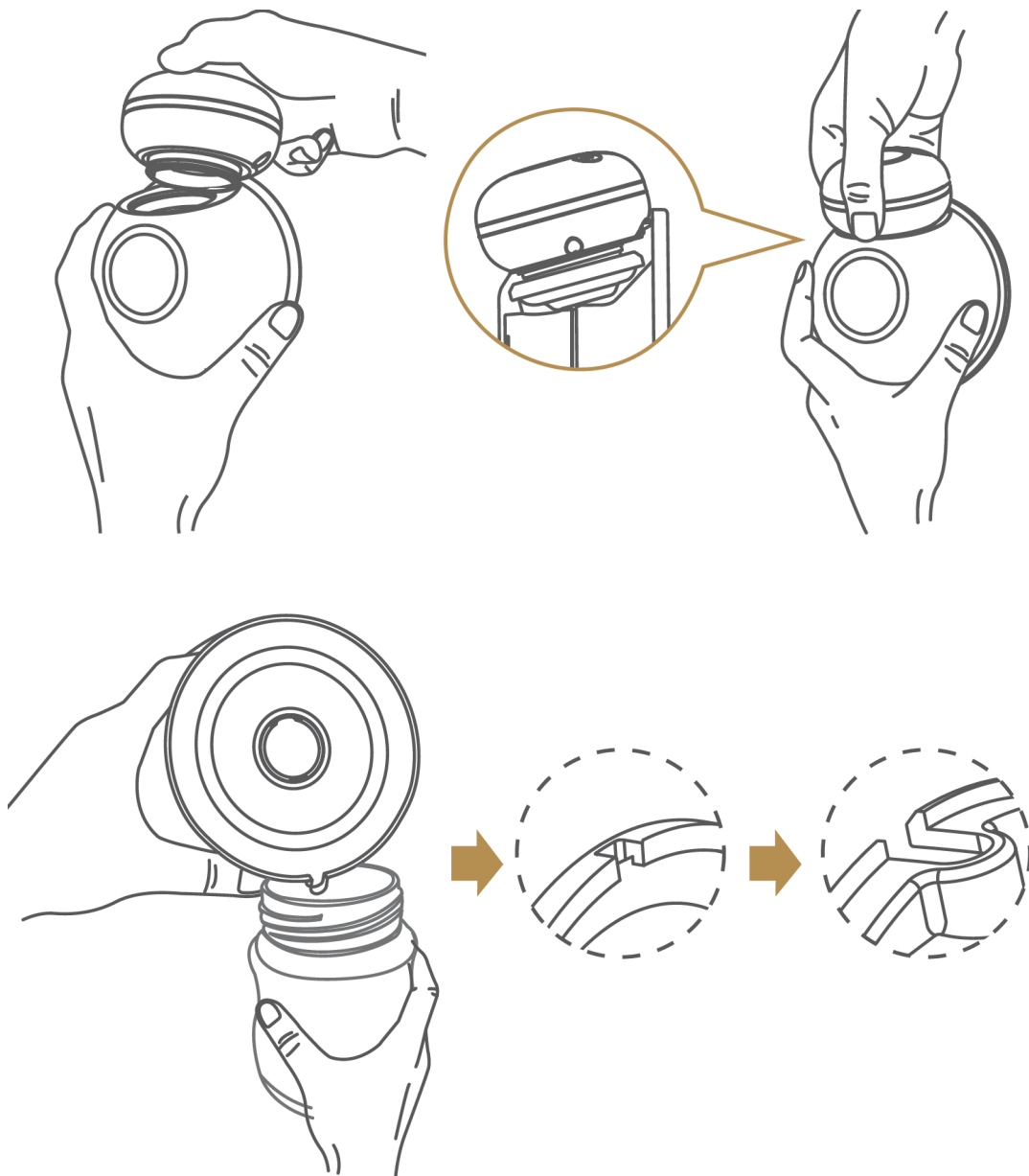
- 7) When you're finished with your pumping session, long press the Power Button  to turn the device off.  
Carefully remove the breast pump from the breast, ensuring the flange doesn't get caught in your bra.



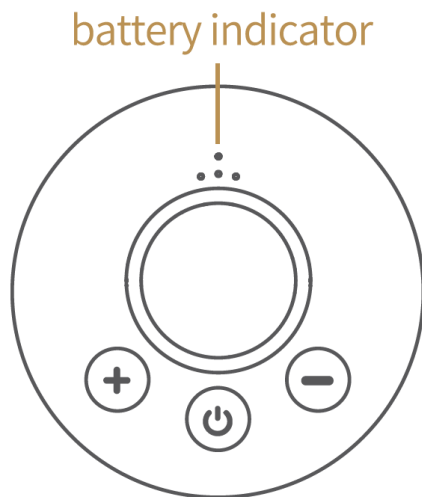
**For more information refer to the *How to* video on the Mumilk website.**

## Pouring Milk

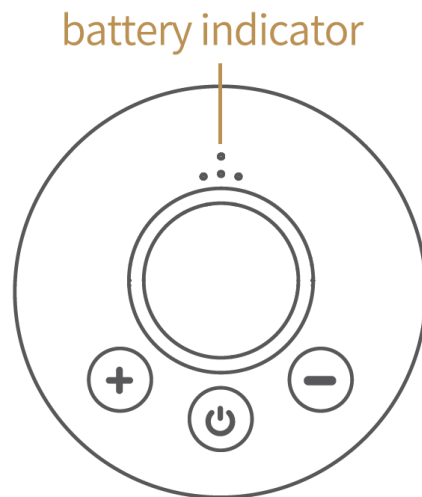
**After your pumping session, please remove the pump from your breast, and detach the motor from the rest of the pump. Use the little hole in the Flange and Milk catcher to pour the milk in your bottle or storage bag.**



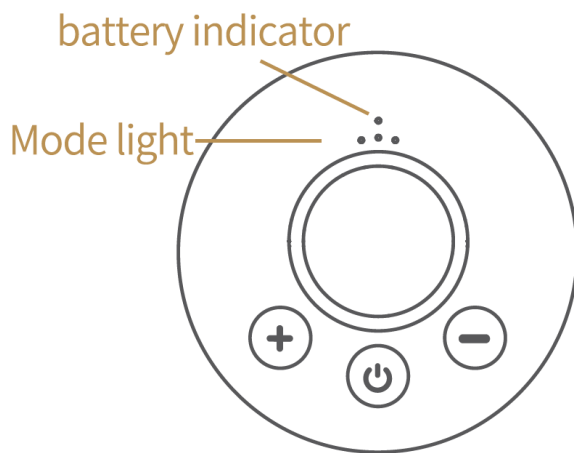
# LED battery indicator



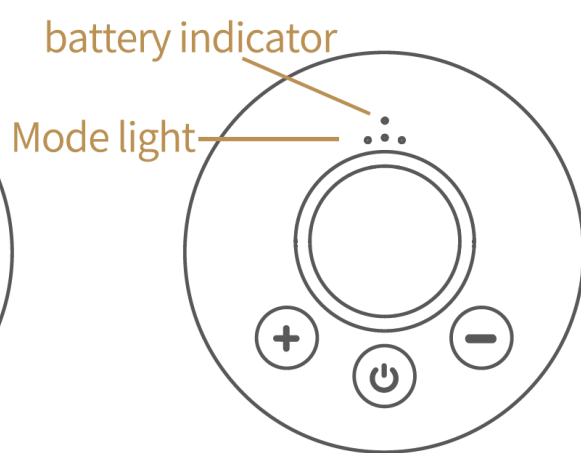
The power indicator light stays on during normal use



The power indicator flashes when the battery is low



The power indicator lights up when charging mode lights flash in sequence



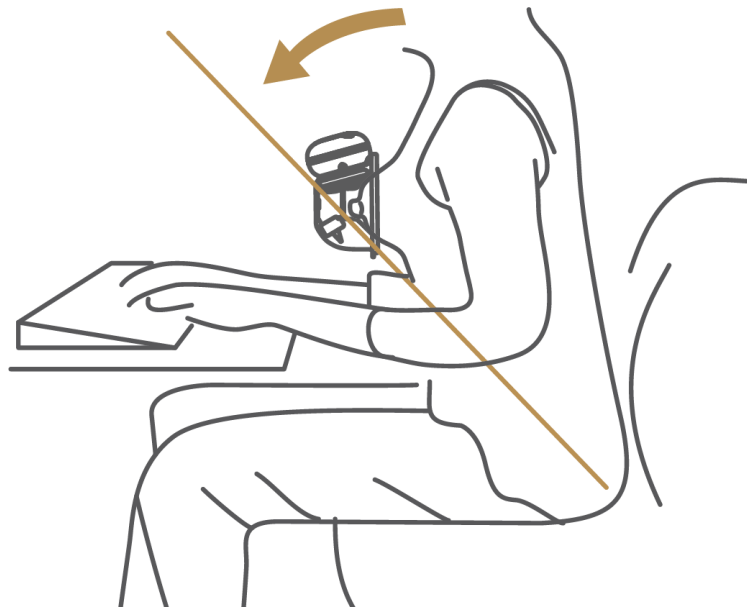
When fully charged all lights are on

## Note

1. The device does not work when charging.
2. The battery life may vary depending on the power adapter or the modes that are used.
3. The charging time can also vary depending on the remaining battery and the power adapter used

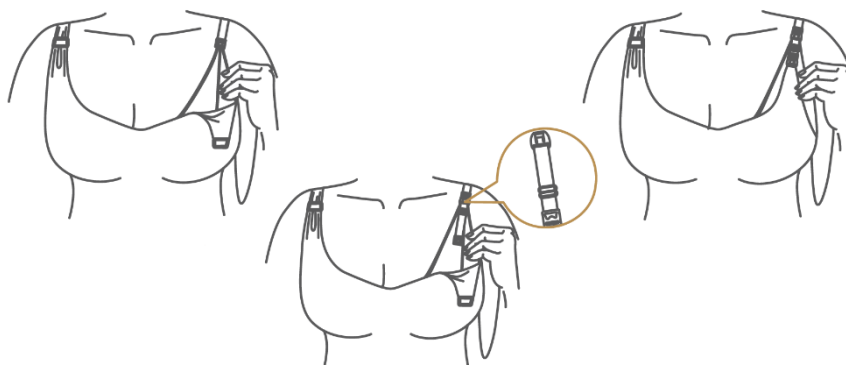
## Sitting position for best pumping results

**Sit in a comfortable position and lean slightly forward. Make sure to keep the breast pump and milk collect as up right as possible.**



## Instructions for bra adjusting buckle

**Adjust the length of your bra straps and clip on the buckle accordingly as per below illustration. The buckle should fit most nursing bra, however, we cannot guarantee it will fit all.**



# Sorting your breast milk

## Sorting Breast Milk

---

**Store your breast milk in a clean and sterilised storage bag or baby bottle and put them in the fridge immediately.**

## Unfreeze Breast Milk

---

**Place the frozen Breast Milk in the fridge to unfreeze overnight. If you're in a hurry, you can defrost the milk in a bowl of hot water and with a bottle warmer device.**

## Tip 1

---

**Only store breast milk collected by a sterilized pump. Do not freeze your milk repeatedly (more than once). Do not mix fresh milk with frozen milk.**

## Tip 2

---

**Remember to always check the milk temperature before feeding it to your baby.**

**Avoid heating up breast milk in microwave.**

**Do not immerse frozen milk into boiling water to unfreeze it.**

