

# vesby glow rail



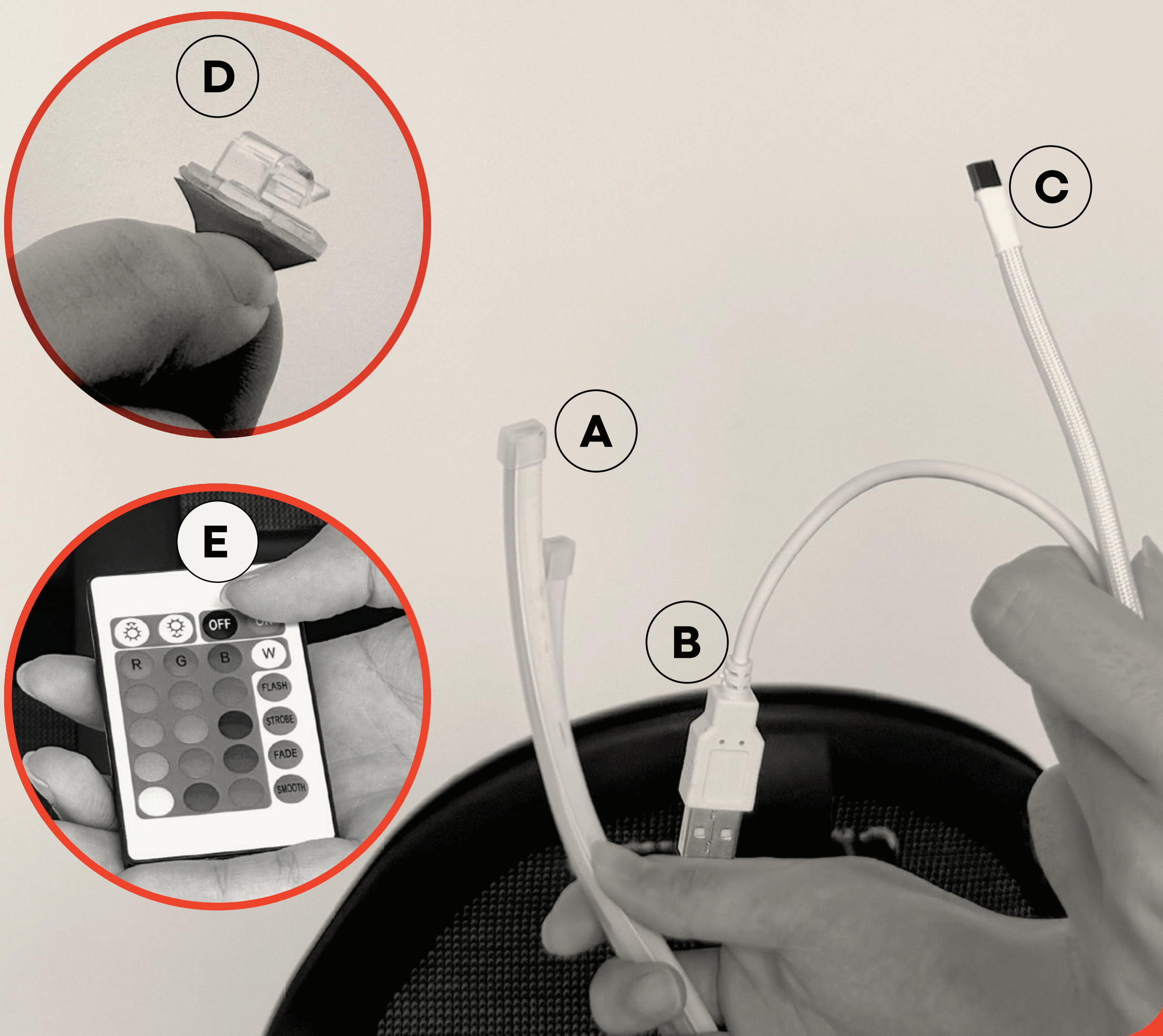
# assembly parts

## Glow Rail Parts

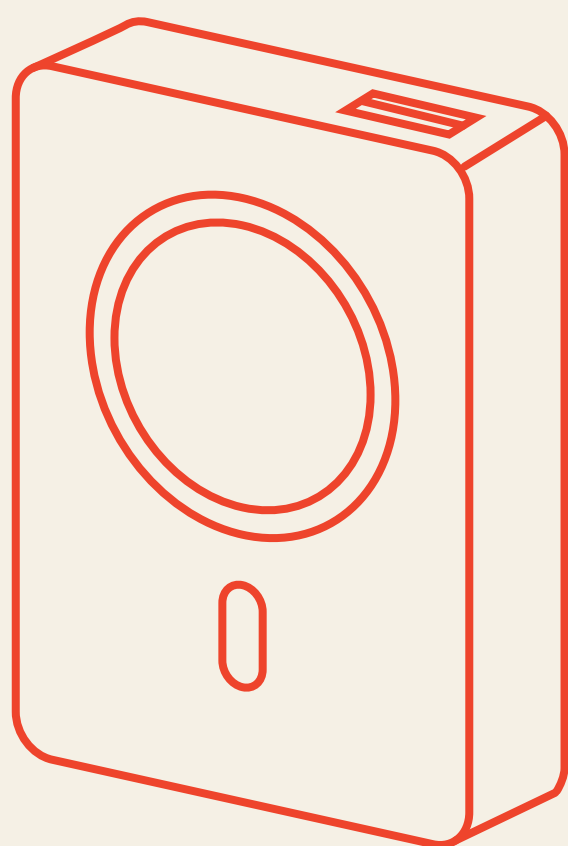
- A** LED Glow Rail - two strips\*
- B** USB Power Head\*
- C** IR Reciever\*

*\*Parts A, B, C are one fully assembled product.*

- D** Cable Clips x 6
- E** RGB Remote Control x 1



## Recommended Power Source

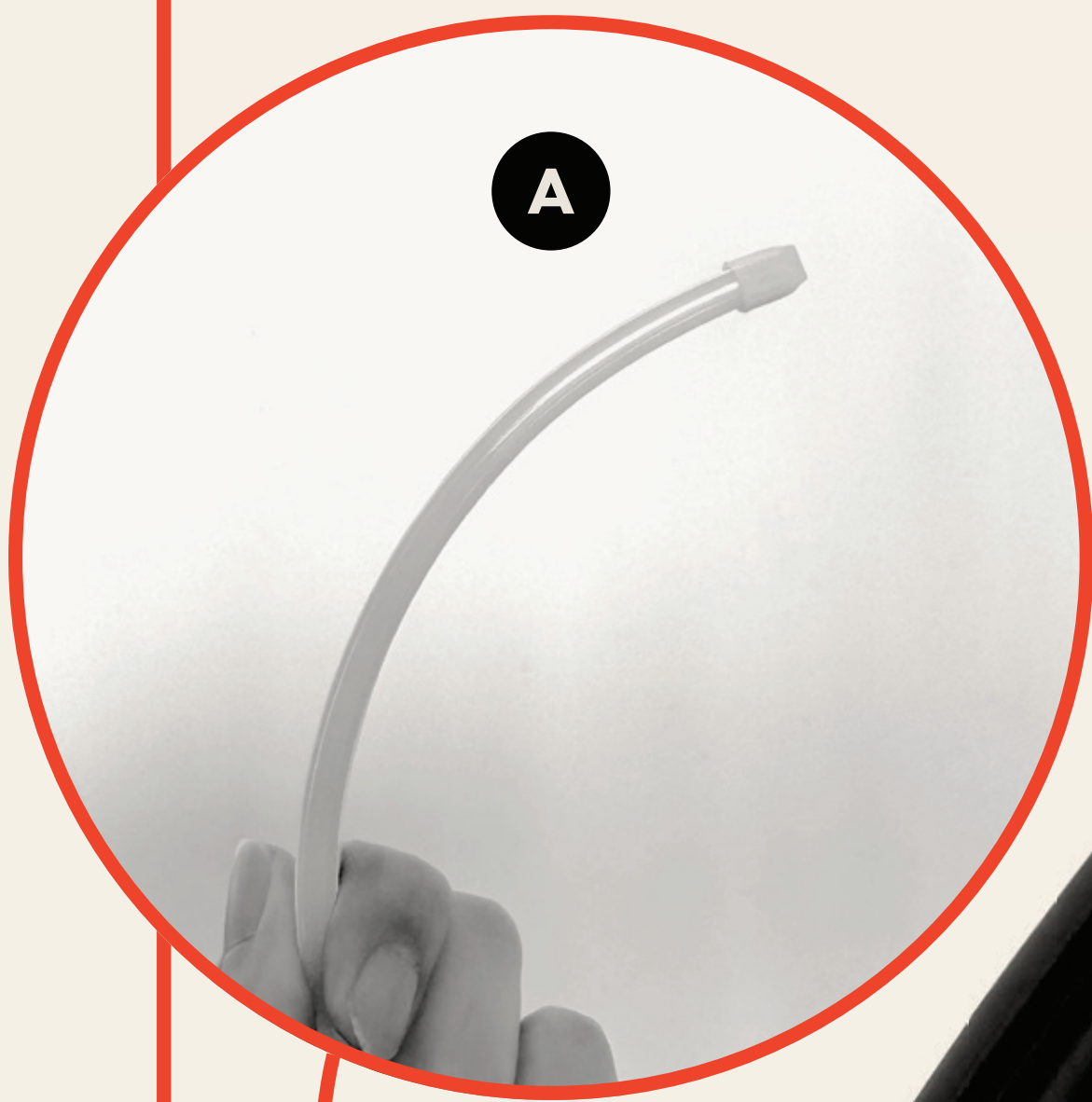


We recommend users pair our Glow Rail with a portable power bank with the specifications listed below. Power banks are **not included** with the Glow Rail.

Capacity	<b>10000 mAH</b> or more
Dimensions	<b>112 x 70 x 20mm</b>

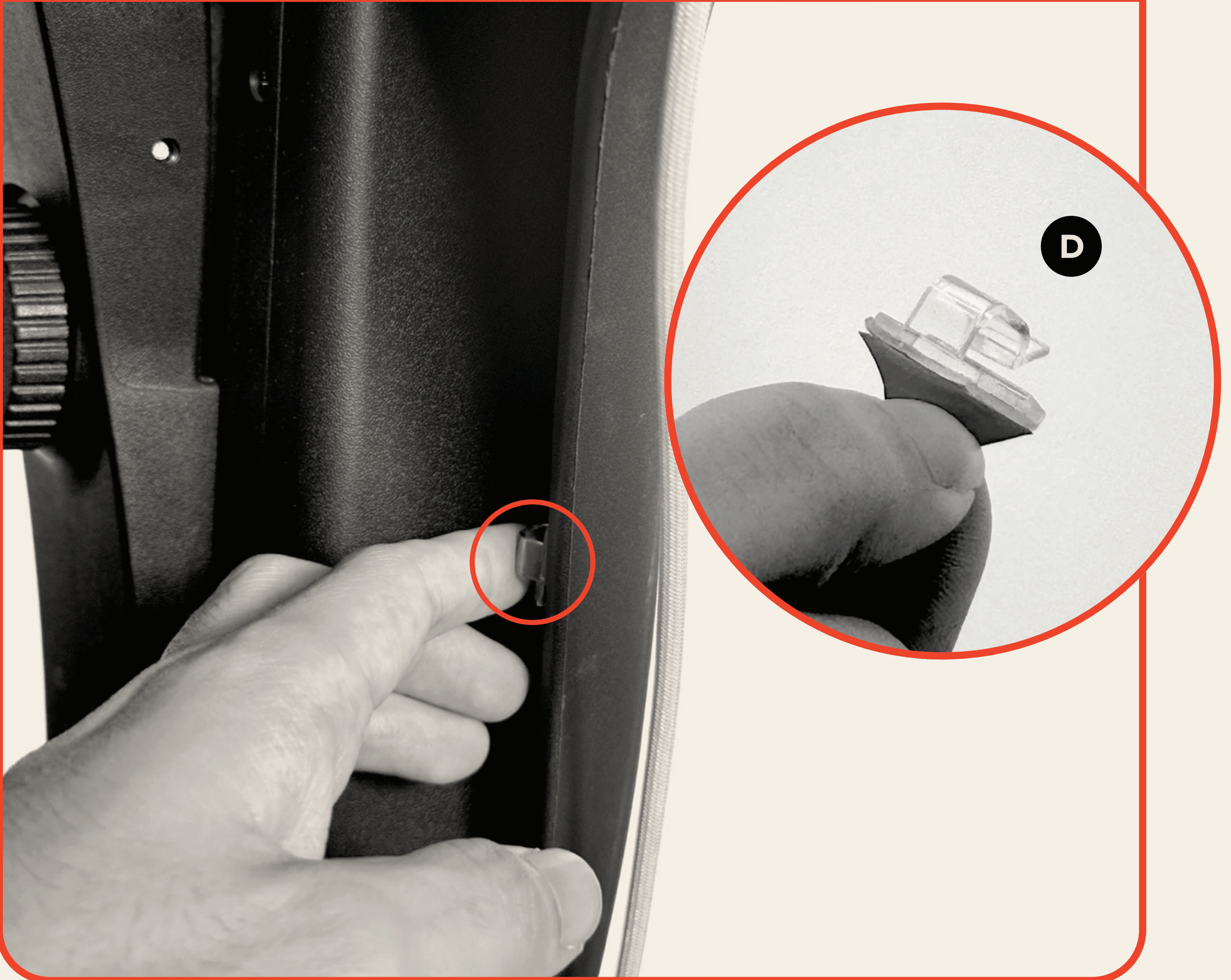
# glow rail assembly

- 1 Push in the end of the **Glow Rail (A)** into Vesby's backrest track, ensuring that the translucent (glossy) edge of the rail is facing outwards. Do this for both left and right sides of the backrest.



# glow rail assembly

- 2 Stick the **Cable Clips (D)** onto the inner side of the backrest. Use two clips per side (left and right).



- 3 Secure the **Glow Rail cable** with the **Cable Clips (D)**, making sure they are hidden, running neatly along the inner side of the backrest.

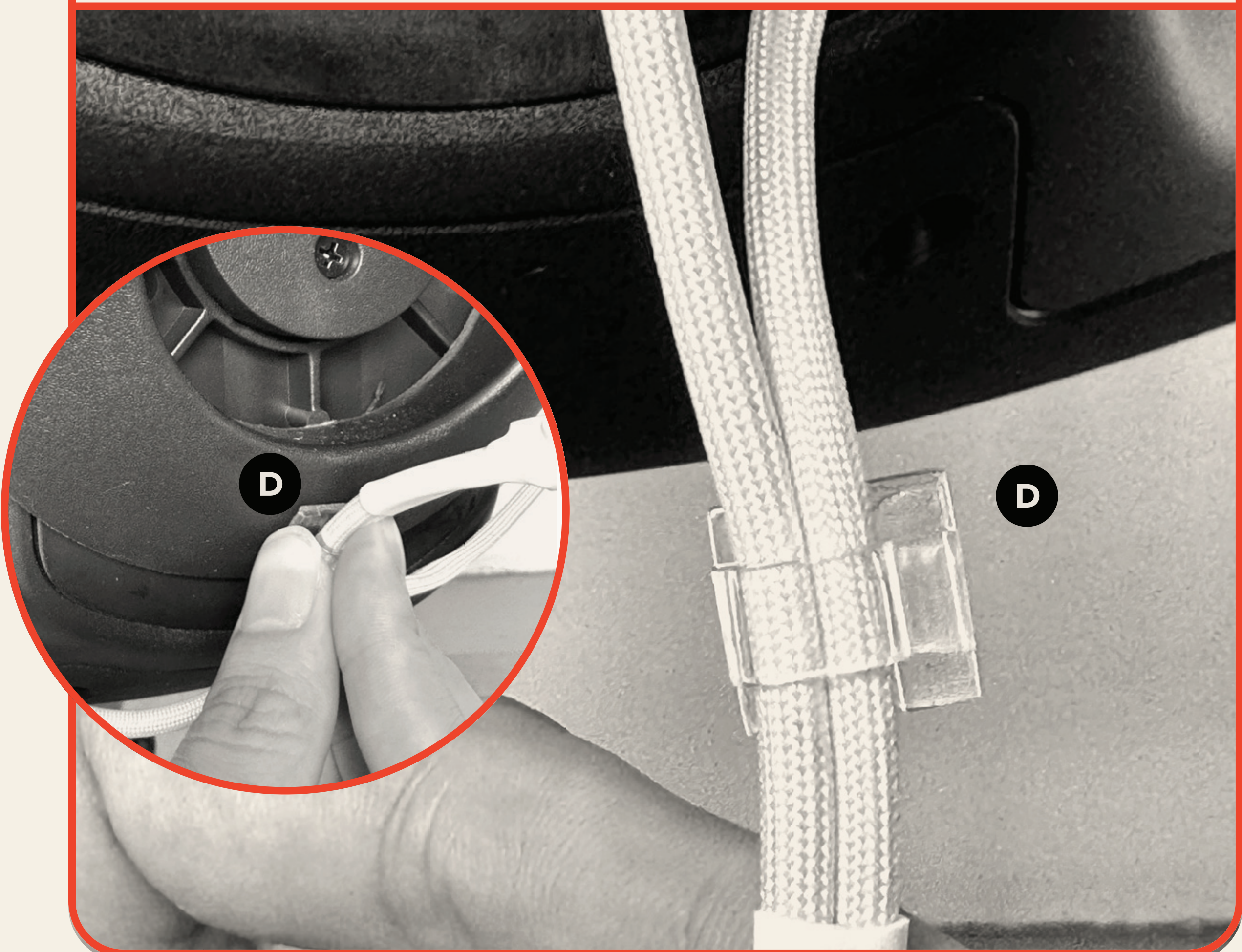


# glow rail assembly

- 4 Pull the ribbon to remove Vesby's backrest cover.



- 5 Clip the **Cable Clip (D)** unto the **Glow Rail Cables**, and stick the **Cable Clip** at the bottom of the backrest, just below the backrest cover.

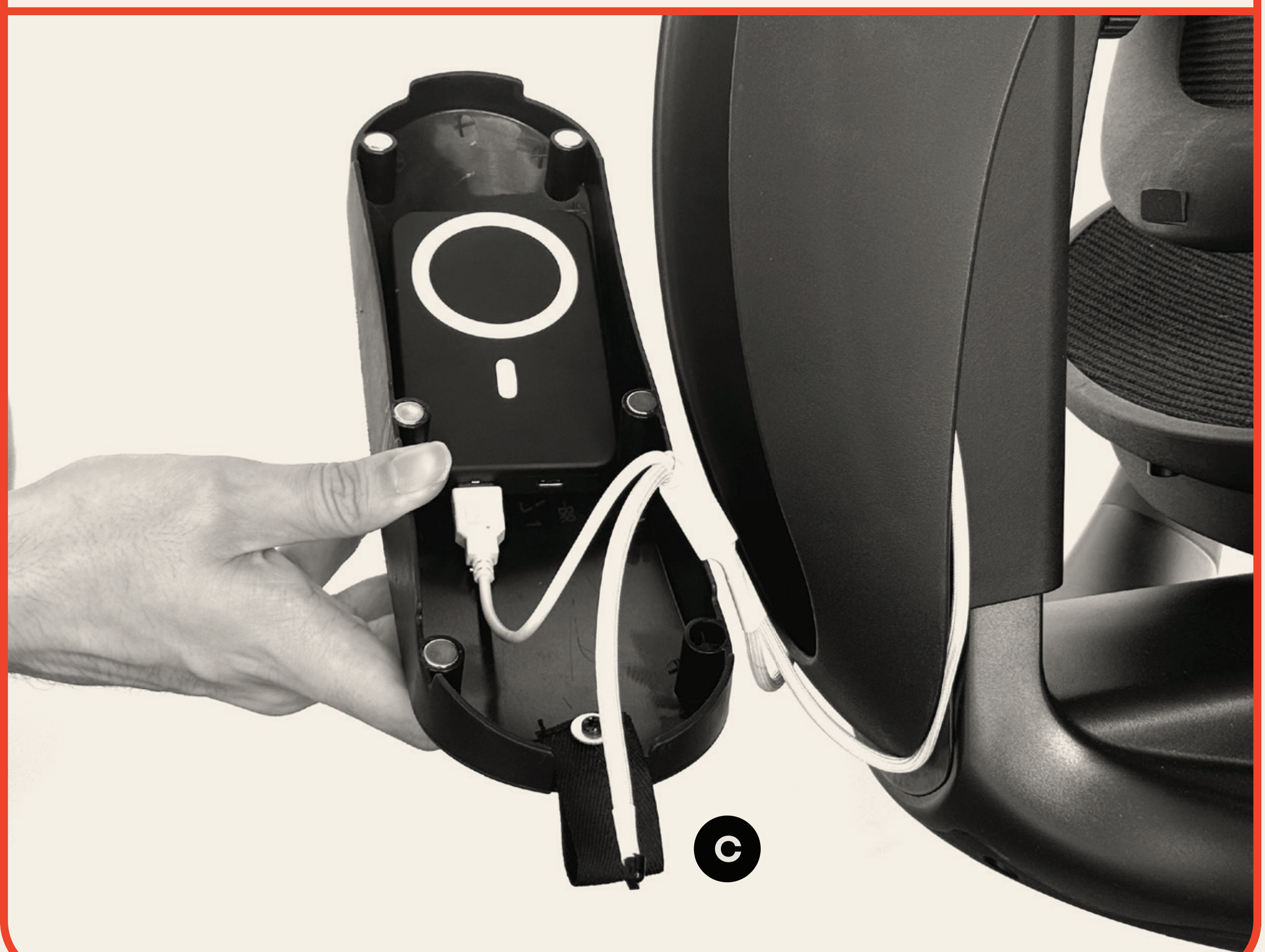


# glow rail assembly

- 6 Plug in the **USB Power Head (B)** to the power bank (not included). Hold onto the **IR Receiver cable (C)**.



- 7 Place the power bank into the top half of the backrest cover. Align the **IR Receiver (C)** with the backrest cover ribbon, ensuring that the black tip is facing outwards.



8

Attach the backrest cover onto the chair. Adjust the ribbon and ensure that the IR Receiver(C) is tucked behind the ribbon, with only the black tip exposed.



9

Turn on the Glow Rail using the provided Remote Control (E), adjusting the coloured lighting to your preference, and your Glow Rail is ready!





**Assembly Guide**