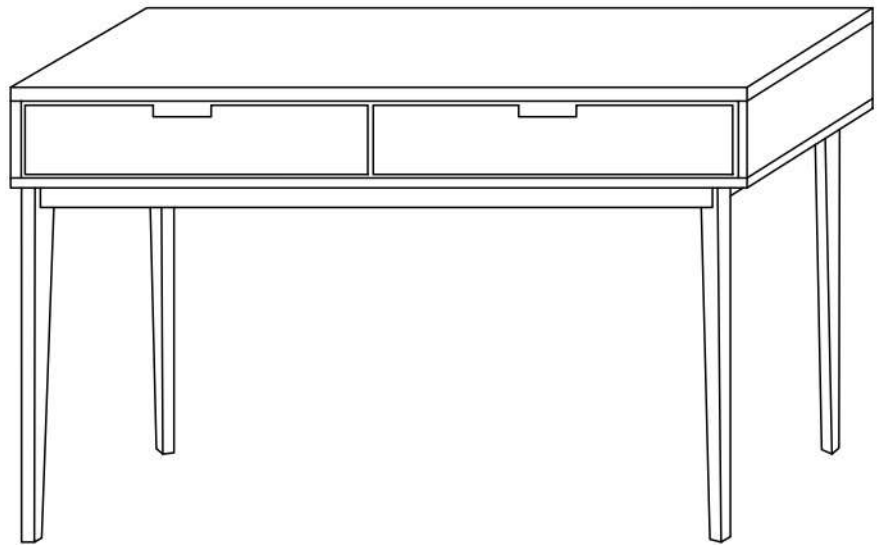


## PARIS / CANNES

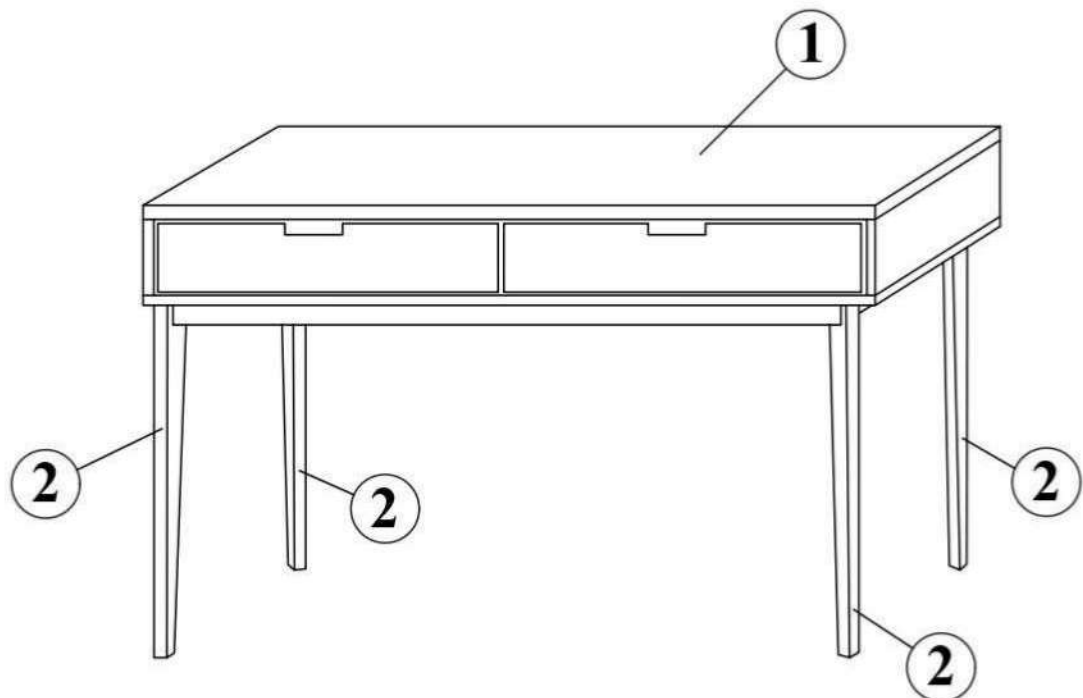
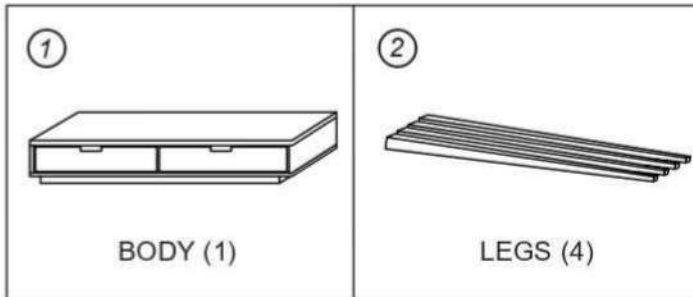
### 2 DRAWERS CONSOLE TABLE



- Please do not throw away any of the packaging or instructions until you have checked all the components and hardware and have successfully completed the assembly
- Before starting the assembly, please spend a short time looking through this leaflet.
- We suggest building your item on a soft surface such as a rug or carpet, or even the packaging this item arrived in. This will help protect the product and your floor!
- Please only use the appropriate tools needed for each task as indicated or mentioned.
- Ensure you have 2 people if your product is heavy or large, or awkward for you.
- Assemble all components loosely until the final stages.
- Keep the assembly tools with the instructions. depending on use, it will be necessary to perform maintenance or upkeep on your product.
- Please keep small pieces out of reach of small children
- If you encounter any issues or concerns before, during or after assembly, be they large, small or strange, please let us know at [customercare@b2cfurniture.com.au](mailto:customercare@b2cfurniture.com.au) We have a dedicated support team with solutions and remedies ready to put them into action for you.
- Final step, enjoy your furniture!

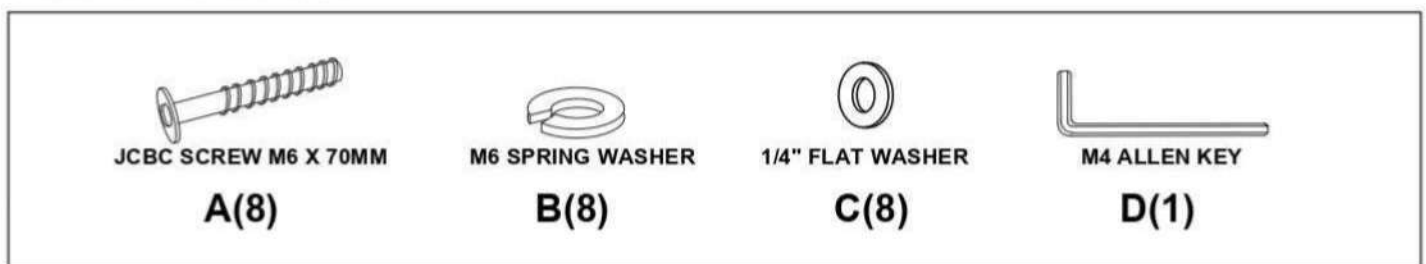
# PARIS / CANNES

## 2 DRAWERS CONSOLE TABLE



### Assembly Tips:

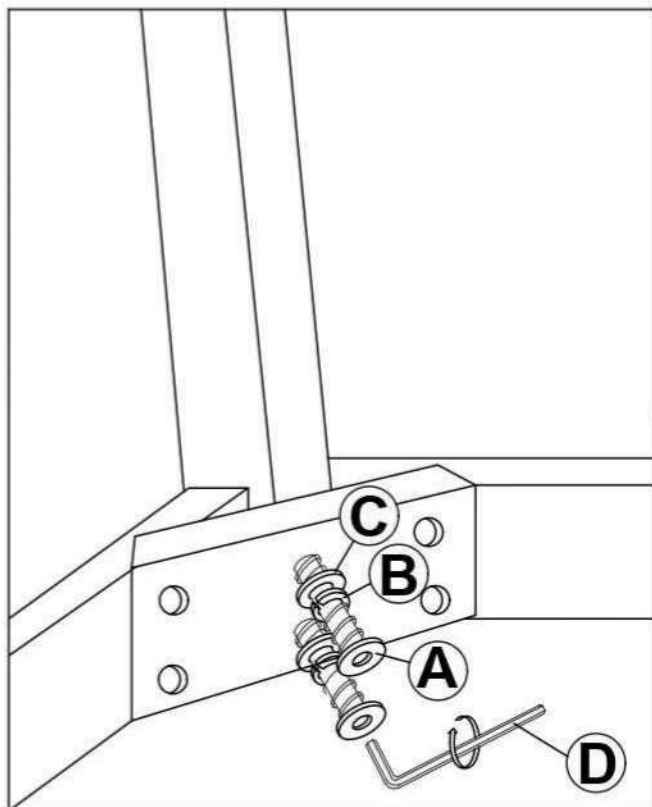
Remove hardware from box and sort by size parts and hardware to check that all hardware and parts are present before assembling.  
Follow instructions below in proper sequence to ensure fast, easy and correct assembly.



M6



Recommended for assembly:



**⚠ WARNING**

**Children have died from furniture tipover.**

- NEVER allow children to stand, climb or hang on drawers, doors, or shelves.
- ALWAYS secure your television with an anchor device or mount the television on a wall.

**This is a permanent label.  
Do not remove!**

