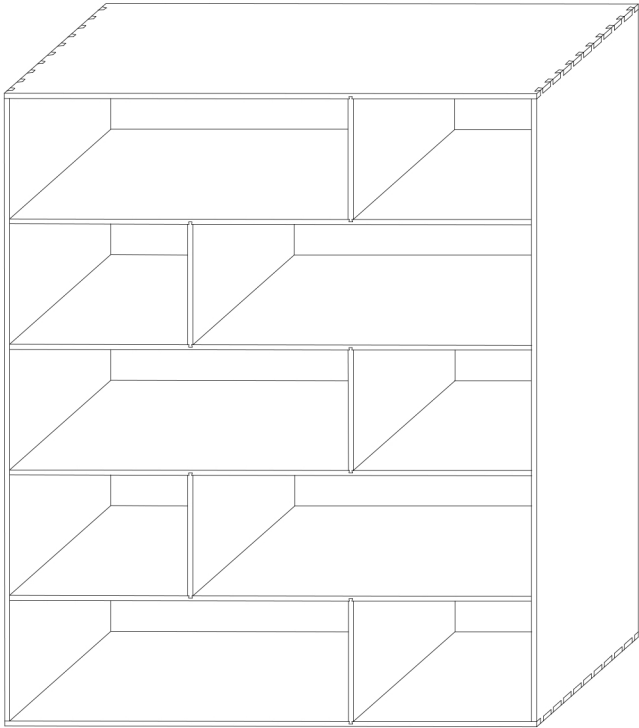


B2C FURNITURE

STAX HARDWOOD STAGGERED BOOKCASE ASSEMBLY INSTRUCTIONS

PARTS LIST			
No.	HARDWARE		Qty.
A	PANHEAD M3.5 X 16MM		59
B	MERLOT		1



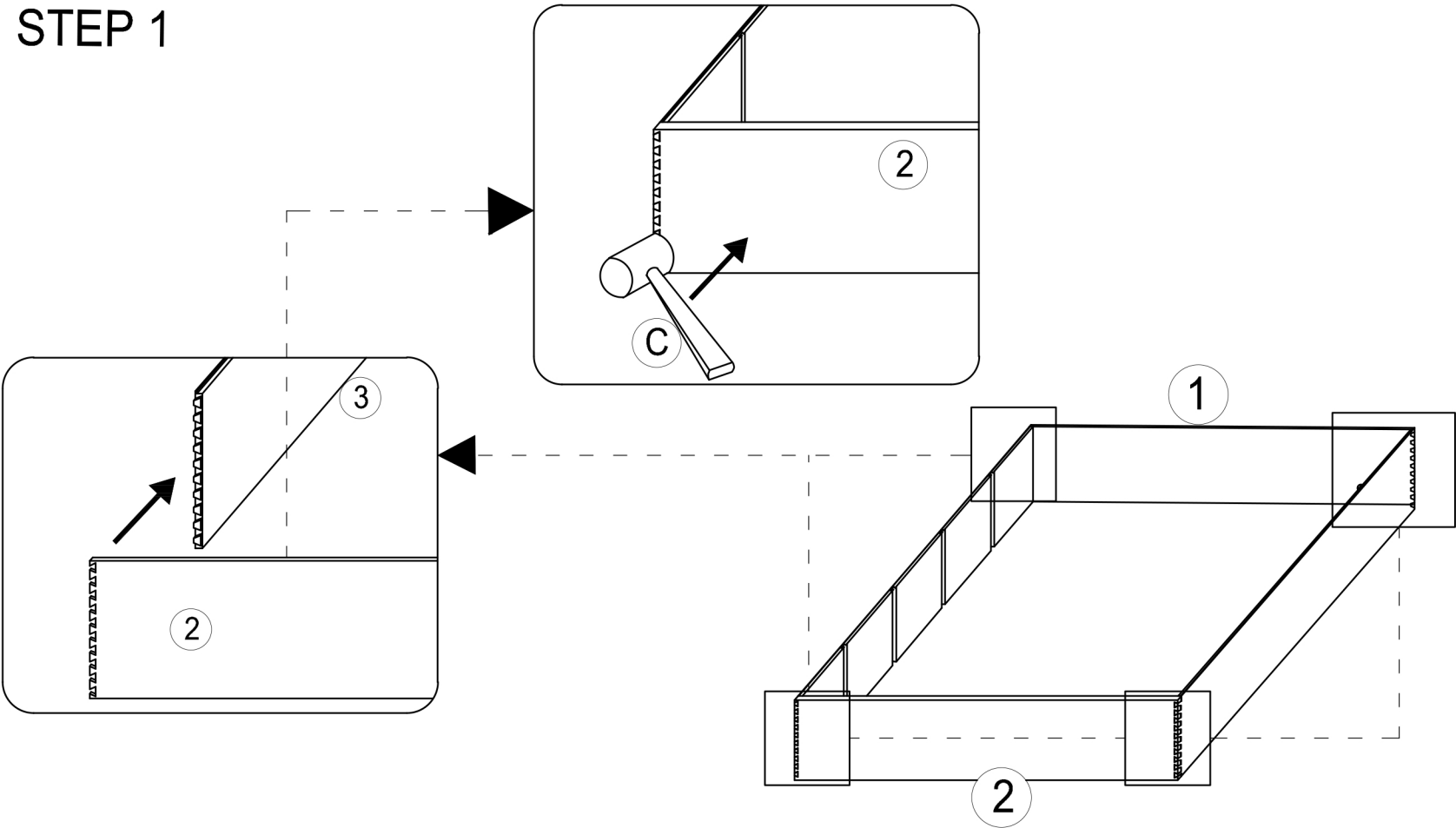
PARTS LIST		
No.	PART LIST FOR FRAME	Qty.
1	TOP PANEL	1
2	BOTTOM PANEL	1
3	SIDE PANEL	2
4	SHELF	4
5	MIDDLE PANEL	5
6	BACK PANEL	1

Assembly Tips:
Remove hardware from box and sort by the size parts and hardware for frame and drawers to check that all hardware and parts are present before assembling. Follow instructions below in proper sequence to ensure fast, easy and correct assembly.

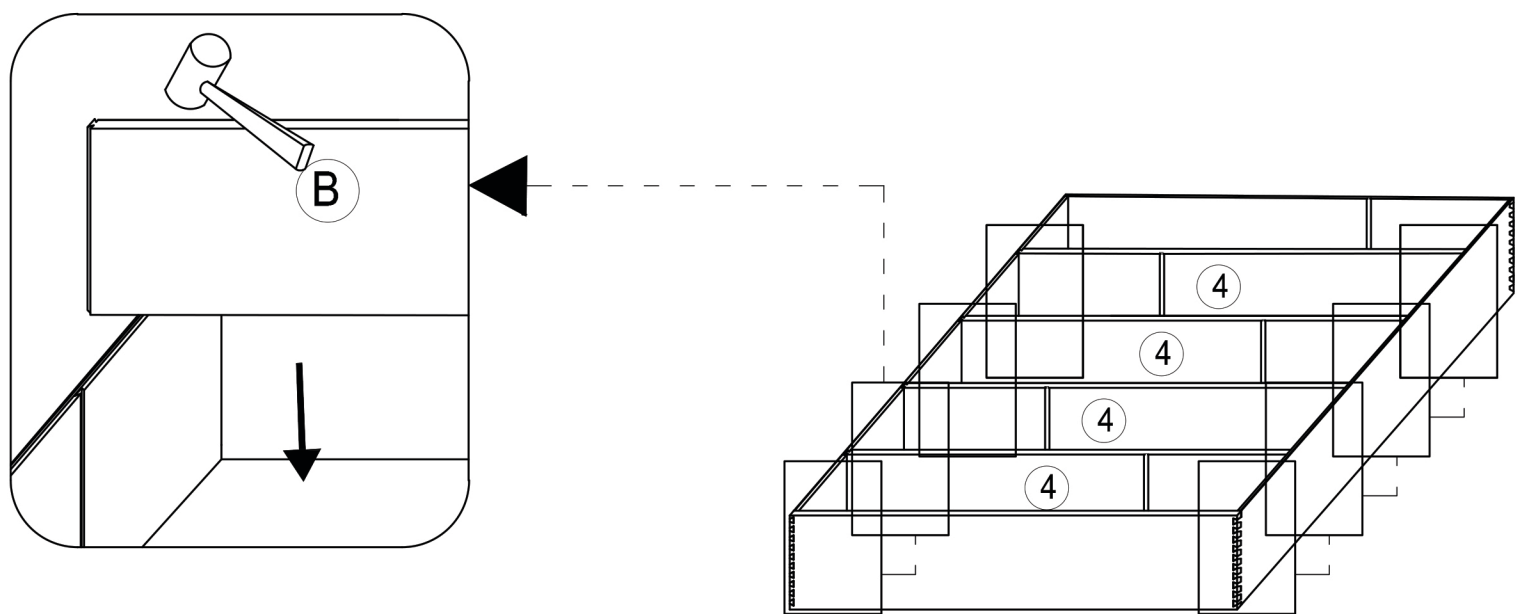
Recomended for assembly:



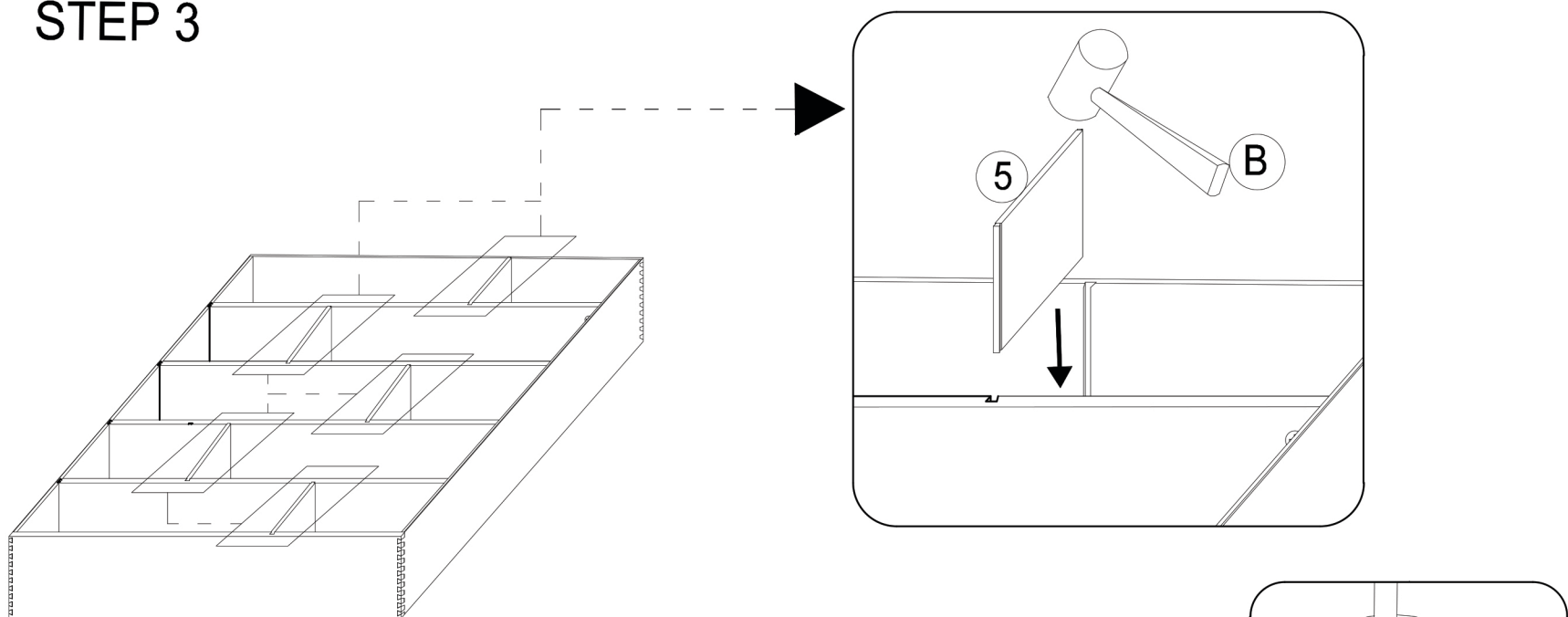
STEP 1



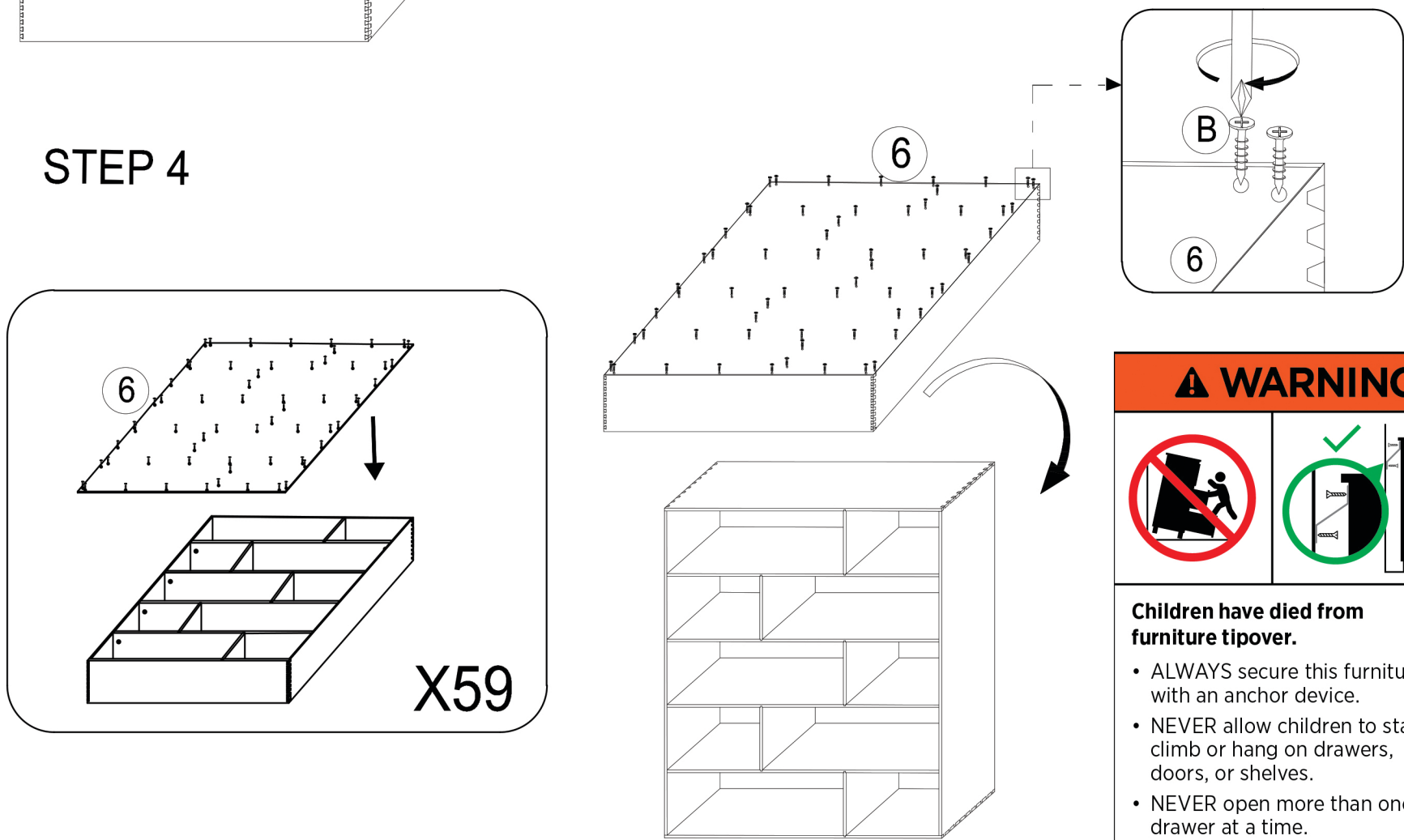
STEP 2



STEP 3



STEP 4



⚠️ WARNING





Children have died from furniture tipover.

- ALWAYS secure this furniture with an anchor device.
- NEVER allow children to stand, climb or hang on drawers, doors, or shelves.
- NEVER open more than one drawer at a time.
- Place heavy items down low.

NEVER put a TV on this furniture

