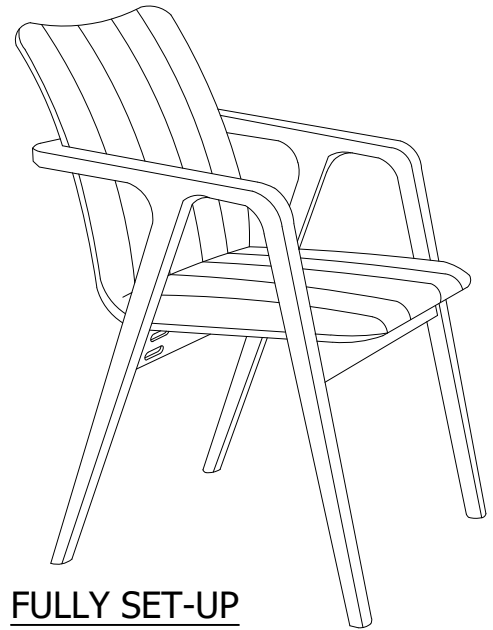


ASSEMBLY INSTRUCTIONS

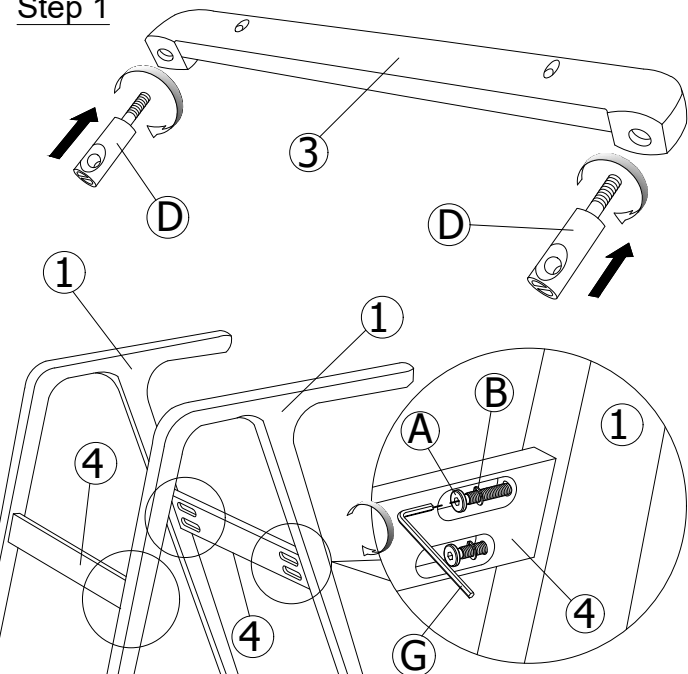
MODEL : DC1015

ITEM	PART NAME	QTY	ITEM	HARDWARE NAME	QTY
1	Leg R&L	2 PCS	A	JCBC BOLT M6 X 45 mm	8 PCS
			B	SPRING WASHER M6 X 13	8 PCS
			C	BARREL NUT (Short)	2 PCS
			D	BARREL NUT (Long)	2 PCS
2	Cushion Seat	1 PC	E	BARREL NUT LOCK	2 PCS
			F	PAN HEAD M4 x 32 mm	4 PCS
			G	ALLEN KEY M4 (Long)	1 PC
			H	ALLEN KEY M5	1 PC
3	Back Support	1 PC	I	WOOD DOWEL M8 x 20	2 PCS
			J	JCBC W M7 X 32MM	2 PCS
4	Apron	2 PCS			

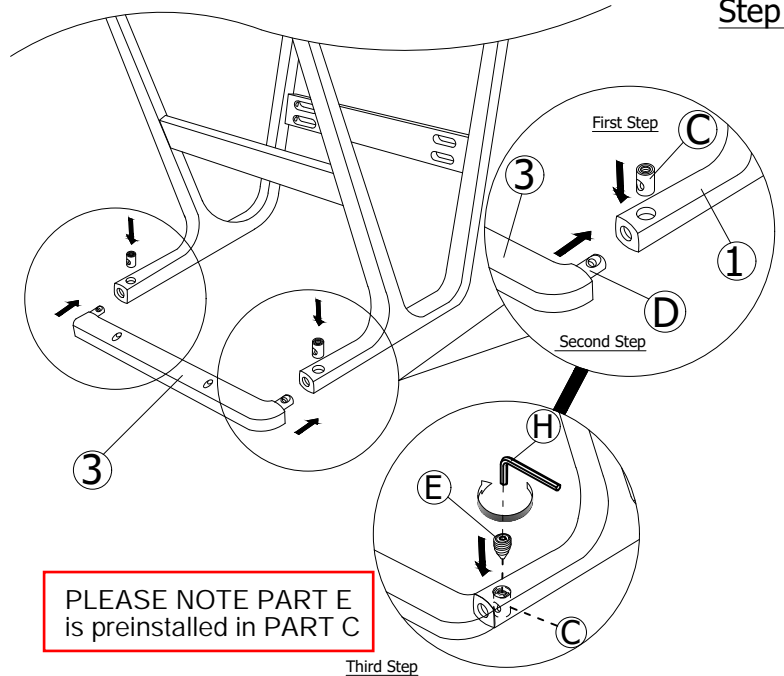


FULLY SET-UP

Step 1



Step 2

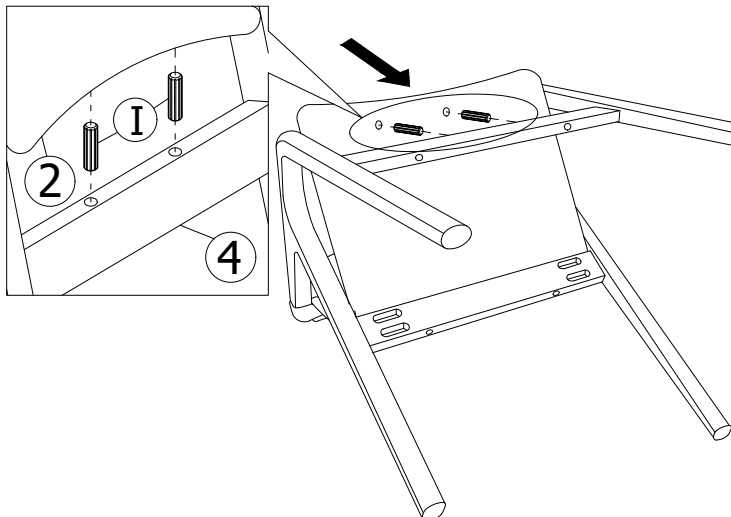


PLEASE NOTE PART E is preinstalled in PART C

Third Step

There are no pre-drilled holes on the seat pad and customers will need to use the tapered screws to drill pilot holes when attaching it to the frame.

Step 3



Step 4

