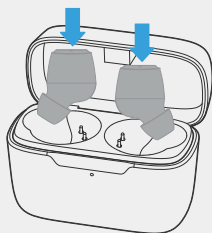
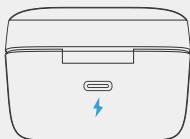


CHARGING



1. Place earbuds in the case

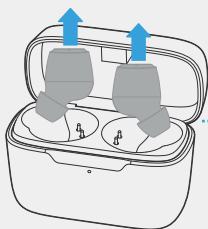


2. Charge your case via USB-C

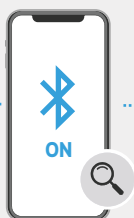


3. A full charge of the case and earbuds takes 2.5 hrs

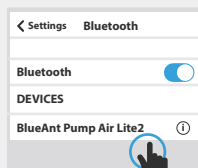
CONNECT



1. Remove earbuds from case



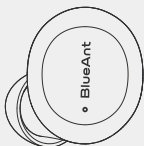
2. Search on your phone



3. Choose "BlueAnt Pump Air Lite2" to connect

BUTTON FUNCTIONS

Left Earbud



Play/Pause

Single Tap

▶▶ To Play/Pause a track



Double Tap

◀◀ Left earbud to skip track backward

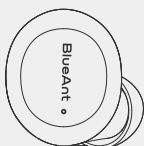


Volume Down

Press & hold

Press & hold left earbud to decrease volume

Right Earbud



Play/Pause

Single Tap

▶▶ To Play/Pause a track



Double Tap

▶▶ Right earbud to skip track forward



Volume Up

Press & hold

Press & hold right earbud to increase volume

Either Earbud



Answer Call

Single Tap

Tap MFB once on either earbud to answer a call



End Call

Single Tap

Tap MFB once on either earbud to end a call



Reject Call

Press & hold

Press & hold on either earbud to reject a call

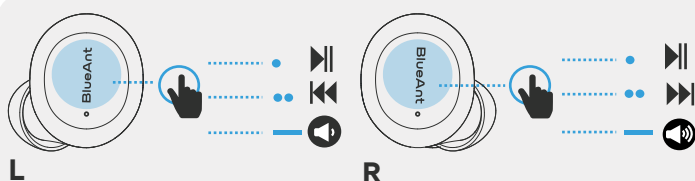


Siri/Google

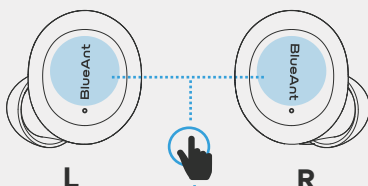
Triple Tap

Click MFB 3 times on either earbuds to Activate/Cancel Siri/Google

CONTROLS



EITHER EARBUD

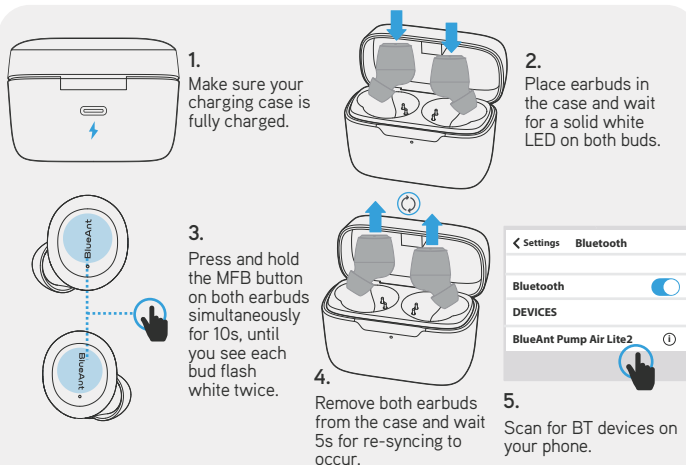


- 1 x TAP
- 2 x TAPS
- 3 x TAPS
- HOLD (3s)



BUDS LOST CONNECTION?

Follow these simple steps



N.B. If you're having trouble with this process, please refer to the user manual (V1.1 or greater) for more detailed information

PRODUCT
REGISTER

Scan me, to register and extend your Pump Air Lite 2 warranty from 1 to 2 years

ONLINE
MANUAL

Scan me, to view the full manual

ONLINE
FAQ

Scan me, to view the FAQ

