

evolve



PHAZE USER MANUAL

REMOTE

To prevent DEATH, SERIOUS INJURY or PROPERTY DAMAGE, you should read, understand and follow the warnings and instructions in this manual. Keep for future reference.



CONGRATULATIONS ON YOUR PURCHASE!

**FROM ALL OF US AT EVOLVE, WE WANT TO
THANK YOU FOR CHOOSING US. WE ARE STOKED
TO WELCOME YOU TO THE EVOLVE COMMUNITY!**

Please read this User Manual carefully before riding, so you will be thoroughly familiar with the proper operation of your Evolve Skateboard, its features, capabilities and limitations. To ensure a long, trouble-free life for your Evolve Skateboard, provide it with the proper care and maintenance as described in this manual. Of course, it is not practical or possible to warn you about all the hazards associated with operating or maintaining your Evolve Skateboard. You must use your own good judgment.

For replacement parts and accessories, you should always use Evolve Skateboards approved parts, as they have been specially designed for your board and are manufactured to meet your Evolve Skateboards demanding standards.

This manual should be considered a permanent part of your Evolve Skateboard and should remain with the skateboard when it is sold.

**IF YOU NEED ANY ASSISTANCE, PLEASE DO
NOT HESITATE TO REACH OUT TO US.**

WWW.EVOLVESKATEBOARDS.COM

CONTENTS

IMPORTANT SAFETY INFORMATION	6
SAFETY MESSAGES	7
HADEAN BAMBOO	12
HADEAN CARBON	14
PHAZE REMOTE	16
TURNING THE BOARD ON / OFF	18
TURNING THE REMOTE ON / OFF	19
YOUR FIRST RIDE	20
CONTROLLING YOUR BOARD	20
FOOT PLACEMENT	21
PHAZE REMOTE	22
REMOTE SCREEN GUIDE	22
REMOTE MENU CONTROLS	23
PAIRING / SYNCING THE REMOTE	24
AUTO SAFE MODE	25
CHANGING SPEED MODES ON THE REMOTE	26
SAFETY SWITCH	28
HOW TO ACCELERATE	29
HOW TO BRAKE	30
SELECT KPH OR MPH	31
SPEED LIMITER	32
CHANGING THE WHEEL & GEAR SETTING	34
TRIP METER	36

CONTENTS

OTHER REMOTE OPERATION FUNCTIONS	36
POWER SAVE FUNCTION	37
SMART START	37
BATTERY INDICATOR DISPLAY	38
LED SETTINGS	40
MY BOARD	41
TRIGGER CALIBRATION	42
BATTERY CARE	45
CHARGING SAFETY	46
CHARGING THE BOARD	48
CHARGING THE REMOTE	49
TROUBLESHOOTING	50
ERROR CODES	50
PROTECTION WARNINGS	51
STORING YOUR BOARD	52
MAINTAINING YOUR BOARD	53
DISPOSAL	53
WARRANTY	54
FCC	55



IMPORTANT SAFETY INFORMATION

READ AND UNDERSTAND USER MANUAL BEFORE RIDING

Read the entire User Manual before riding on your Evolve Skateboard and keep it for reference. This User Manual contains important safety, performance and service information.

Like any sport, skateboarding involves the potential risk of death, serious injury and property damage. By choosing to ride, you assume the responsibility for that risk, so you need to know - and to practice - the rules of safe and responsible skateboarding. Proper use and maintenance of your skateboard reduces the risk of injury. If you have any questions or do not understand something, contact your regional Evolve distributor.

This manual is not intended as a comprehensive use, service, repair or maintenance manual. Please see your regional distributor for all service, repairs or maintenance. Your regional distributor may also be able to refer you to resources on service, repair or maintenance.' (i.e. links to our YouTube channel).

RIDER'S RESPONSIBILITY REGARDING REGULATIONS

It is the rider's responsibility to obey the regulations that apply to your Evolve Skateboard.

The regulations covering the use of your Evolve Skateboard vary by state/province, and even municipality in certain locations. You must comply with the local regulations related to the minimum age of the rider, insurance, license plate, traffic and maximum speed regulations and any other regulations. These regulations may change at any time.

INTENDED USE

The intended use of your Evolve Skateboard is to be ridden by one adult rider (Age 16 and up and up to 120kg (265 lbs) on the Hadean Carbon or 100kg (220lbs) on the Hadean Bamboo) at a time for personal transportation and recreational use. Any other use is prohibited and may result in **SERIOUS INJURY** or **DEATH**.

Your Evolve Skateboard is **NOT INTENDED** for stunts or jumping of any kind.

Riders should be proficient skateboarders riding on paved surfaces or dirt paths where the tyres are always on the ground. Only use on roadways where permitted by law (We recommend not riding on pedestrian use shared lanes or sidewalks).

The recommended rider age is 16 and older. Any rider unable to fit comfortably on the skateboard should not attempt to ride it. A parent's decision to allow their child to ride this product should be based on the child's maturity, skill and ability to follow rules. Riders under the age of 18 should ride under adult supervision.





SAFETY MESSAGES



WARNING

TO PREVENT SERIOUS INJURY OR DEATH

- Read all safety warnings and all instructions.
- Always ride within your limits and the limits of your Evolve Skateboard. **ALWAYS** ride at speeds at which you are comfortable without power or brakes. Your board can lose power or brakes during your ride if the available charge in the batteries in your board or in your remote is too low.
- Only for use by persons 16 years of age and above. Riders must have the physical coordination, reaction and mental capabilities to control a skateboard and manage traffic, road conditions and sudden situations, as well as to respect the laws and instructions governing electric skateboard use. Persons with any mental or physical conditions that may make them susceptible to injury, impair their physical dexterity or mental capabilities to recognise, understand, and follow safety instructions and to be able to understand the hazards inherent in its use, should not use or be permitted to use products inappropriate for their abilities.
- Never ride under the influence of drugs and/or alcohol. 
- Consult a doctor before using the device if you have any medical condition or issue that affects your ability to safely perform physical activities, or if you:
 - are or may be pregnant;
 - have heart, respiratory, back, joint, or other orthopaedic conditions;
 - have high blood pressure;
 - have difficulty with physical exercise; or
 - have been instructed to restrict physical activity.
- Always keep small parts away from children. Some skateboard accessories may present a choking hazard to small children.
- Never modify your frame or skateboard in any way. Do not sand, drill, file or remove parts from your Evolve Skateboard. Do not install incompatible components or hardware.
- **PINCH POINT** Hazard. Keep fingers, hair, clothing (including shoelaces) jewellery and other objects away from belts, wheels and motors. 
- Take responsibility for your own **SAFETY**. If you have any questions or do not understand something, contact Evolve at **EVOLVESKATEBOARDS.COM**



HELMETS, PROTECTIVE PADS AND FOOTWEAR

- Always wear a helmet. Wearing a helmet properly may reduce the risk of a severe head injury. When riding, always wear a helmet that meets or exceeds the standards of the Consumer Product Safety Commission (CPSC).
- Ensure your helmet fits your head and is properly secured.
- Always read your helmet manual to make sure your helmet is properly adjusted for your head according to the fitting instructions provided by your helmet manufacturer.
- A proper fitting helmet should be comfortable and not rock forward/backward or side to side.
- The helmet should sit level to protect your forehead and should not have more than a 2 finger gap from your eyebrows. **NEVER** wear your helmet tipped back to expose your forehead or angled left or right.
- Adjust straps so sliders are below and in front of the ear on both sides.
- Buckle chin strap. Adjust strap so no more than two fingers fit between the strap and your chin.
- Elbow pads and knee pads are recommended for additional protection.
- Always wear athletic shoes (lace-up shoes with rubber soles), never ride barefooted or wearing sandals. Keep shoelaces tied and away from the wheels and the drive system.



FOLLOW SKATEBOARD REGULATIONS ON AND OFF ROAD

- **BE AWARE OF SKATEBOARD REGULATIONS IN YOUR AREA.** Generally, the regulations for the use of an Evolve Skateboard are the same as local Personal Mobility Device (PMD) regulations or those for a standard skateboard. There may be local differences such as where you can ride, minimum rider age, or required equipment and registration regulations. It is your responsibility to know the local regulations that apply to an electric skateboard for the area you intend to ride and to obey them.
- **DO NOT RIDE ON BUSY ROADS WITH LINE MARKINGS.**
- **ALWAYS RESPECT PEDESTRIANS!!!**



RIDE AT YOUR OWN RISK AND USE COMMON SENSE

- **YOUR EVOLVE SKATEBOARD HAS A MAXIMUM SPEED OF 50 KPH (31 MPH).**
- Do not ride distracted. Always remain alert to all riding conditions. Using technology (including your mobile phone or music player) while riding could distract you. Only adjust settings using Phaze remote when you are off your board and in a safe, stationary position.
- Never use headphones or a mobile phone to talk or text when riding.
- Always ride defensively. Watch out for potential obstacles that could force you to swerve suddenly or lose control. Braking while turning may reduce your ability to control your Evolve Skateboard.
- Look ahead and brake sooner. You may be moving faster and your electric skateboard is heavier as compared to a skateboard, so you may need to react and brake sooner when riding. Other road users may not expect you to be travelling at higher speeds. Riding faster increases your risk of death or serious injury from a crash.
- Slow down well before entering corners, so you do not enter a corner too quickly. You should also pay particular attention to terrain conditions as you may approach obstacles faster than expected.
- Do not jump on the board, do not ride off gutters or curbs, do not smash the board into hard objects, do not drop the board on the ground for starting operation to prevent damaging your board and its systems.
- **SPORT** and **CORSA** Modes are very powerful and the remote acceleration and brakes are highly sensitive. Be very gentle with the controls to avoid being thrown off the board. Practice with these Modes by trying to move as slowly as possible **BEFORE** riding at higher speeds in these Modes.



AVOID RIDING AT NIGHT

- Riding at night comes with more risks than riding during the day due to decreased visibility. Others may have difficulty seeing you and you may not see obstacles in your path.
- You should wear reflective clothing at night. You may want to attach additional flashing lights on your clothing or helmet.



RIDING ON HILLS

- Riding on hills can be extremely dangerous; what goes up must come down! If you ride up a steep hill and you intend to ride down this same hill, you must know how to control your speed without the use of the skateboard brakes. Heavy braking on steep terrain could cause the motors to overheat and then you may not have the skateboard braking system available to assist you.
- Your Evolve Skateboard can climb hills of up to 35% gradients. Riding continuously on steep hills will put massive stress on your board, the motors and the brakes.
- If you feel the board slowing down on a steep hill, this may be the protections providing you warning that the board is working too hard. You must consider stopping to avoid risking damage to your board and the electronics.

NOTE: Damage from overloading the electronics and the motors is not covered by warranty.



DO NOT RIDE IN WET CONDITIONS

- Riding in wet conditions will significantly reduce grip. This may result in the board aquaplaning or sliding from under your feet or the wheels slipping or sliding. It will also take longer for you to brake or stop. The risk of a crash is dramatically increased in wet conditions.
- Your Evolve Skateboard may be able to withstand light rain and small splashes, but is not designed to be subjected to inclement weather, extremely heavy showers or submersion in water. Water damage is not covered under warranty.

SIGNAL WORDS



Indicates a hazardous situation that, if not avoided, will result in death or serious injury.



Indicates a hazardous situation that, if not avoided, could result in death or serious injury.



Indicates a hazardous situation that, if not avoided, could result in minor or Moderate injury.



Indicates information considered important, but not hazard related (e.g. messages relating to property damage).

SYMBOL INDEX



Safety Alert Symbol. It is to alert you to potential personal injury hazards. Obey all safety messages that follow this symbol to avoid possible serious injury or death.



PINCH POINT Hazard. Keep fingers, hair, clothing (including shoelaces) jewellery and other objects away from belts, wheels and motors.



NEVER ride under the influence of drugs and/or alcohol.

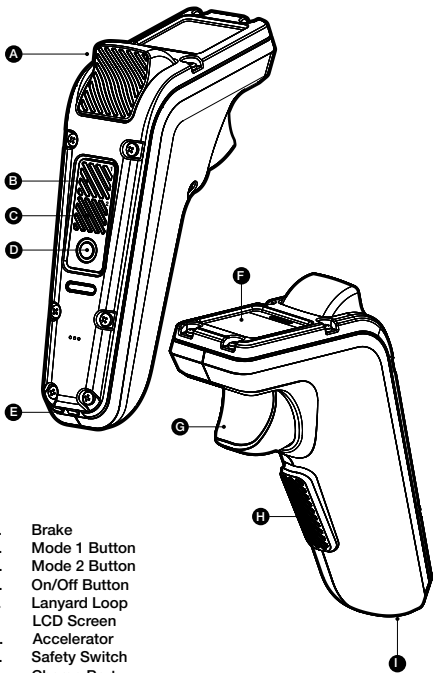


ALWAYS wear a helmet and protective elbow and knee pads.



Read, understand and follow the warnings and instructions in this manual.

PHAZE REMOTE



PRE-RIDE CHECKLIST



BEFORE EACH RIDE, INSPECT YOUR BOARD AND REMOTE FOR DAMAGE. DO NOT RIDE IF DAMAGED.



CHECK BOTH THE FRONT AND REAR TRUCKS AND ALL FOUR WHEELS ARE SECURE.



BE SURE TO MAINTAIN YOUR ALL TERRAIN TYRE PRESSURE BETWEEN 45-50 PSI.



PROPERLY SECURE YOUR HELMET AND PROTECTIVE PADS.



MAKE SURE YOUR BOARD AND REMOTE BATTERIES ARE FULLY CHARGED.

See Battery Care Section for additional information about charging your board.

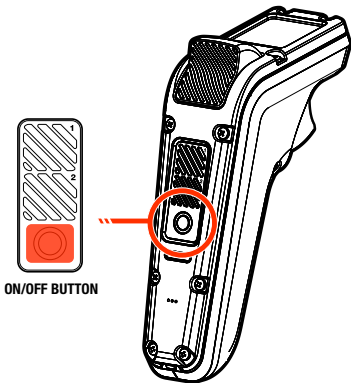


TURNING THE REMOTE ON / OFF

To turn the remote **ON**, press the **ON/OFF** button. The remote will vibrate and the **ON/OFF** light will turn blue.

Once **ON**, the LCD screen will power on and briefly display the Evolve logo and then switch to a 'Pair Remote' screen. This will instruct you how to pair your remote to your board.

To turn the remote **OFF**, press and hold the **ON/OFF** button for one second or until the screen and **ON/OFF** light turn off.



NOTE - Always turn the board on 1st and the remote on 2nd.



YOUR FIRST RIDE

The acceleration of your Evolve Skateboard may be faster than anticipated and may feel unusual at first. Before your first ride, you should use the **ECO** Speed Mode and become familiar with the operation of your board by practicing starting and stopping, cornering and navigating obstacles in a safe environment away from other bicycles, pedestrians and/or vehicles. You should also pay particular attention to terrain conditions as you may approach obstacles faster than you expect.

CONTROLLING YOUR BOARD

Your Evolve Skateboard is controlled by a combination of your inputs to the board and remote. Turning and stability is dependent on the rider.

To turn the board, you must lean in the direction you wish to turn. To keep stable, it is recommended to stay relaxed, so that your body can absorb bumps and movements created by the terrain or remote input.



Move your weight toward your front foot while accelerating and towards your rear foot while braking.

Your Evolve Skateboard comes with the Speed Limiter set at 20kph (12mph). It is highly recommend starting in **ECO MODE** and not increasing the Speed Limiter setting when learning to ride your board and to use the remote.



ONLY make small inputs to the trigger controls to avoid being thrown from your board. Start learning to ride by trying to move as slowly as possible within each Speed Mode. Use both the brakes and accelerator triggers to control your speed.

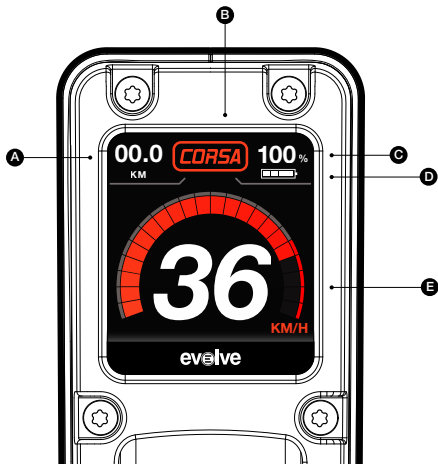
Slowly progress through the speed modes depending on your riding ability and experience.



SPORT and **CORSA** modes are very powerful and the trigger is highly sensitive.

PHAZE REMOTE

REMOTE SCREEN GUIDE



- | | | | |
|----|---------------|----|----------------|
| A. | Trip Meter | D. | Remote Battery |
| B. | Speed Mode | E. | Speedometer |
| C. | Board Battery | | |

NOTE - DEFAULT SCREEN SHOWN



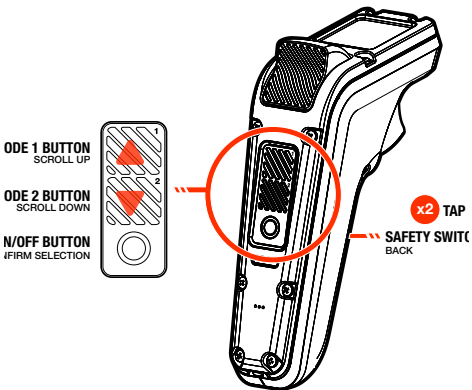
REMOTE MENU CONTROLS

To access the remote menu, turn remote **ON**, then double tap the **ON/OFF** button.

When in the menu use **MODE 1** and **MODE 2** buttons to navigate/scroll through menu lists.

Press **ON/OFF** button to confirm selections.

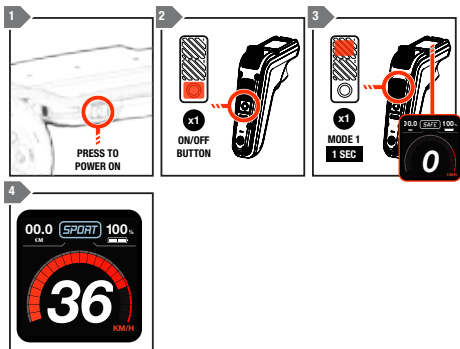
When in menu, double-tapping the **SAFETY SWITCH** will take you back to the previous screen.





PAIRING / SYNCING THE REMOTE

1. Turn your Evolve Skateboard **ON**.
2. Turn remote **ON**.
3. Once the LCD screen displays 'Pair Remote', follow the on-screen instructions. Press and hold the **MODE 1** button on the remote for one second or until the Bluetooth symbol begins to flash.
4. Once paired, the LCD screen will show the speed dial and be in **SAFE** mode. This means you are ready to ride!



NOTE: Once the remote and board are paired, they will be automatically paired the next time you use your board.

TIP – Make sure not to touch the accelerator or brake triggers as the remote is pairing to the board. Once paired, lift the wheels off the ground and pull the accelerator trigger to check the wheels move. Then push the brake trigger to test the wheels will stop. If there are any delays in the control responses, turn both the board and remote OFF and repeat the process above to pair your board with the remote.

AUTO SAFE MODE

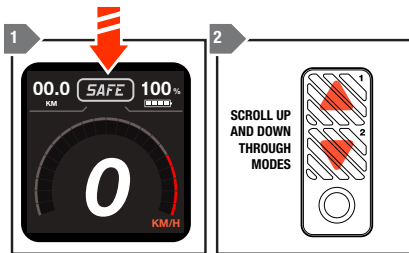
The **SAFE** Mode is designed to detect any potential issues with the control of the board.

This can relate to potential issues, including battery performance, motor controller performance and remote operational control.

1. The **SAFE** Mode will be activated if a potential issue is detected by the remote.

When **SAFE** Mode is activated, the remote will vibrate for one second and then your will have reduced acceleration and braking power. If there is a specific error detected, error messages will be displayed in the 'Warnings' screen under 'My Board' in the menu.

2. To exit the **SAFE** Mode function, press the **MODE 1** button to return the previous speed setting you were riding.





CHANGING SPEED MODES ON THE REMOTE

Once your remote is paired to your skateboard, it will be in **SAFE** Mode.

Press **MODE 1** or **MODE 2** button once, this will change the speed from **SAFE** Mode to the previous speed setting of your last ride.

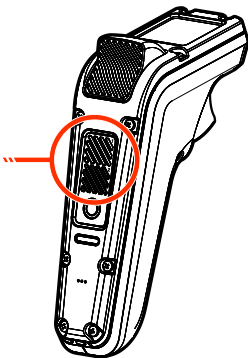
Each time you press the **MODE 1** button, this will increase the speed Mode from **ECO** Mode through to **CUST** Mode one Speed Mode at a time.

Each time the **MODE 2** button is pressed, it will decrease the speed Mode from **CUST** Mode through to **ECO** Mode one Speed Mode at a time.

MODE 1 BUTTON
SCROLL UP

MODE 2 BUTTON
SCROLL DOWN

ON/OFF BUTTON
CONFIRM SELECTION



Each time you press the **MODE 1** or **MODE 2** button to change your speed settings the remote will vibrate one time giving warning the Speed Mode has changed.

The Speed Mode is clearly displayed at the top of your LCD screen.



ECO SPEED MODE

Economical cruising mode. Best for beginners and longest ride times.



SPORT SPEED MODE

Fast acceleration, can reach top speed, good for smaller hills and short grass.



CORSA SPEED MODE

Insane acceleration, reaches top speed quickly, will tackle any hill, dirt tracks and grassy terrain.



CUSTOM SPEED MODE

Custom Mode allows you to adjust the power level, acceleration curves and brake curves for your skateboard. This Mode is great for those wanting something different to the standard default speed.

CUST Mode can be adjusted via the **EXPLORE BY EVOLVE APP** which is available on the iTunes App Store or on the Android Play Store.

*TIP - Use the Speed Modes as you would gears on a bike. Cycle back down from **SPORT** or **CORSA** according to the riding situation. For example, select **SPORT** or **CORSA** Mode for an approaching hill, then cycle back down to **SPORT** or **CORSA** Mode once you have reached the top of the hill. **CUSTOM** Mode is your individual power curve preference, whether its low acceleration or high acceleration, soft or hard braking, this is your go to Mode that best suits your riding style.*



SAFETY SWITCH

The **SAFETY SWITCH** (AKA **DEADMAN** switch) is located under the accelerator trigger. You must hold the **SAFETY SWITCH** using your 2nd and/or 3rd finger as you engage the accelerator trigger to begin riding. The Speed Mode display on the screen will turn a solid colour once you press the **SAFETY SWITCH**.



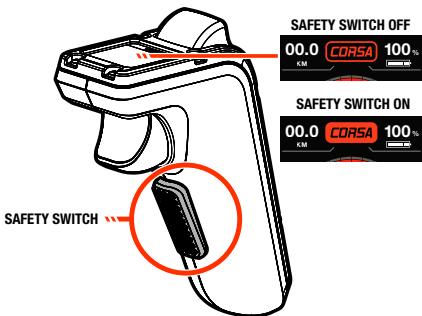
If you do not press the safety switch in as you engage the accelerator trigger, the board will not move.

Once you begin moving and reach speeds of 3-5 kph (2-3 mph) or above, you will be able to ride freely without engaging the **SAFETY SWITCH** during acceleration, braking or neutral trigger movements.

When you come to a stop or reach 0 kph, the need for the **SAFETY SWITCH** reactivates. You must hold in the **SAFETY SWITCH** the next time you wish to use the accelerator trigger again.

You do not need to hold in the **SAFETY SWITCH** to activate the brake.

The **SAFETY SWITCH** can be disabled or re-enabled by going to the **OPTIONS** menu and changing **DEADMAN** to **OFF** or **ON**.





HOW TO ACCELERATE

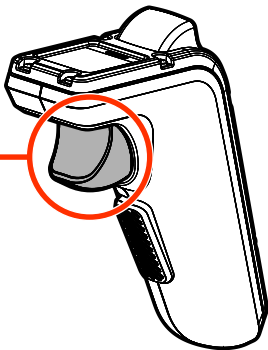
With the **SAFETY SWITCH** depressed, pull the accelerator trigger slowly and you will begin to move forward. The further you pull the trigger in, the faster you will go.

Once over 5kph (3 mph), then you can release the safety switch.



Have your weight positioned on the front foot when you accelerate, this stops the board flying out from under your feet!

ACCELERATOR

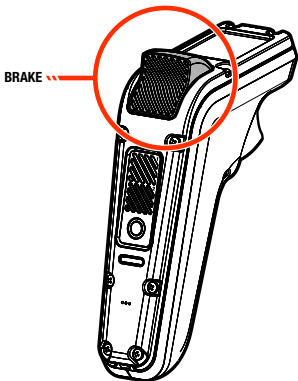


HOW TO BRAKE

Push the brake trigger forward SLOWLY and you will begin to slow down. The further you push the trigger, the stronger the braking will be.

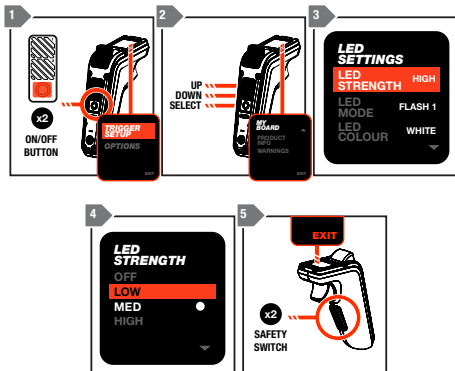


Avoid keeping the thumb on the brake trigger as you ride. The brake trigger takes precedence over all other remote functions and if pressed will cut acceleration, prevent acceleration or changing Modes and will not allow you to turn off the remote.



SELECT KPH OR MPH

1. Double-tap the **ON/OFF** button to access the menu..
2. Scroll by pressing the Mode buttons until you reach 'Options', then press the **ON/OFF** button to confirm selection.
3. Scroll by pressing the Mode buttons until you reach 'Units', then press the **ON/OFF** button to confirm selection.
4. Scroll by pressing the Mode buttons to select the unit of measurement for your region (kph or mph). Press the **ON/OFF** button to confirm selection. A white circle will appear next to the confirmed selection.
5. Double tap the **SAFETY SWITCH** to go back to the previous menu screen or scroll to the 'EXIT' selection and press the **ON/OFF** button to return to the default ride screen.





SPEED LIMITER

⚠️ WARNING

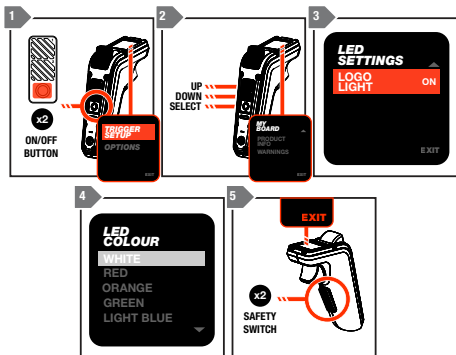
To prevent serious injury or death, always ride within your limits and the limits of your Evolve Skateboard. **ALWAYS** ride your board at speeds at which you are comfortable without power or brakes. Your board can lose brakes and power during your ride if the available charge in the batteries in your board or in your remote is too low.

The Speed Limiter will set the maximum top speeds to comply with the specific laws or regulations in the area you intend to ride and should also be used to assist you with riding within your limits. Your Evolve Skateboard has a maximum speed of 50 kph (31mph).

Your Evolve Skateboard comes with the Speed Limiter set at 20 kph (12 mph). Power and torque are still the same when the Speed Limiter is activated, however the top speed is restricted to the setting you choose.

To access the speed limiter:

1. Double-tap the **ON/OFF** button to access the menu.
2. Scroll by pressing the Mode buttons to reach 'Options' then press the **ON/OFF** button to confirm selection.
3. Scroll by pressing the Mode buttons to 'Speed Limit' press the **ON/OFF** button to confirm selection.
4. Scroll by pressing the Mode buttons to set the desired speed limit – 32 kph (20 mph), 25 kph (16 mph), 20 kph (12 mph) or OFF. Then press the **ON/OFF** button to confirm selection. A white circle will appear next to the confirmed selection.
5. Double tap the **SAFETY SWITCH** to go back to the previous menu screen or scroll down to 'Exit' and press the **ON/OFF** button to return to the default ride screen.





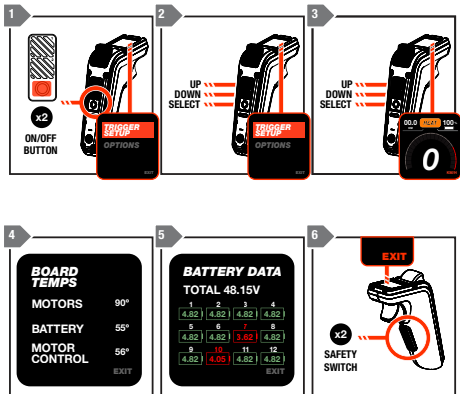
CHANGING THE WHEEL & GEAR SETTING

Be sure to select the wheel and gear combination you are riding with, as this will give you an accurate speed and distance display on your remote.

To adjust the wheel and gear setting,

1. Double-tap the **ON/OFF** button to access the menu.
2. Scroll by pressing the Mode buttons to select 'Board Setup', then press the **ON/OFF** button to confirm your selection.
3. Scroll by pressing the Mode buttons to select 'Wheel Setup', then press the **ON/OFF** button to confirm your selection. The screen will display All Terrain Wheel/Gear Sizes and Street Wheel/Gear Sizes.
4. Confirm you are using either All Terrain wheels or Street wheels, then scroll to your selection by pressing either Mode buttons and then press the **ON/OFF** button to confirm selection.
5. Scroll through to the correct wheel and gear size by pressing the Mode buttons. Press the **ON/OFF** button to select correct wheel and gear option. A white circle will appear next to the confirmed selection.
6. Double tap the **SAFETY SWITCH** to go back to the previous menu screen or scroll to the 'EXIT' selection and press the **ON/OFF** button to return to the default ride screen.

NOTE : The street boards all come with 32T gear as standard. The AT boards come with 66T gear as standard. Other gear sizes and wheels are available on Evolve websites.

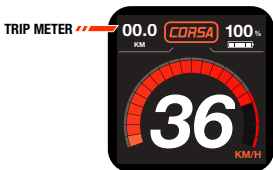




TRIP METER

The Trip Meter will show your distance travelled for your current ride only in the top left corner of the LCD screen.

Once you turn your board OFF, the Trip Meter will reset to 0 distance.



OTHER REMOTE OPERATION FUNCTIONS

- If you accidentally press both the accelerator trigger and brake trigger at the same time, the brake function will override the accelerator input.
- If you hold down both the accelerator and the brake triggers and then release the brake trigger, your board will not accelerate.
- As you are riding and holding down the accelerator or brake trigger, you will not be able to change speed Modes or turn the remote OFF until you release the triggers.
- When the Safety Switch is enabled and you kick push the skateboard to start, you can avoid pressing in the Safety Switch, this is also good for battery efficiency.
- Get to know the vibration warnings on your remote, these can be useful during your ride.
- The LCD screen is much easier to see when there is less direct sunlight.
- After 5 minutes of no use, the Phaze remote will enter a sleep mode to save on battery life. While in this mode no controls will function. To reactive the remote and your board, press the brake trigger. The lights on your deck will flash and you are ready to ride.
- Avoid riding with your thumb positioned on the brake trigger as you are accelerating, this may cancel out the accelerator when you are not ready.



POWER SAVE FUNCTION

To maximise the battery run time for your remote, tilt at a low angle and the Power Save function will turn the remote screen off. Power Save will automatically activate one minute after the remote is turned **ON**.

When the rider lifts the remote to a more level position, it will turn back **ON**.

To deactivate/reactivate this function, go into the 'Options' section of the remote menu and change the settings for 'Power Save'.



SMART START

When your Evolve Skateboard is turned on it has the ability to enter an inactive state that can be remotely turned on by your Phaze remote.

After 5 minutes of no use, your board and Phaze remote will enter a sleep mode to save on battery life. While in this mode no controls will function.

To start your board and remote, press the brake trigger. The lights on your deck will flash and you are ready to ride.

NOTE : When you reactive your board it will be in **SAFE** mode. To exit the **SAFE** Mode function, press the Mode 1 button to return the previous speed setting you were riding.



BATTERY INDICATOR DISPLAY

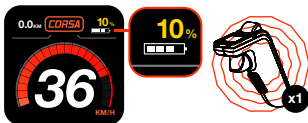
When the remote is connected to the board, it will display how much battery power is remaining in the board and remote battery in real time.

The board battery level is displayed as a percentage symbol (%) in the top right-hand corner of the LCD screen and the remote battery level is displayed in a bar below.

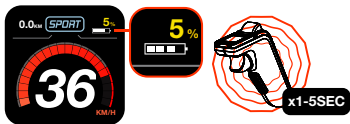


There are low battery warnings set on the remote that provide you with notice of when to expect the skateboard to run out of power.

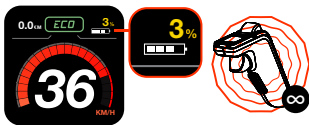
1. At 10% the remote will vibrate quickly one time. Lights on the board will change to an amber colour.



2. At 5% the remote will vibrate once every 5 seconds and go to **SPORT** mode. Lights on the board will pulse an amber colour.



3. At 3% the remote will vibrate for 5 seconds with a brief pause then continue to vibrate and go to **ECO** mode. Lights on the board will flash an amber colour



4. At 0% the remote will continue to vibrate and soon after the board will turn off. The remote will then disconnect from the board and the board will be in 'Free Roll' mode.



Reducing the Speed Settings at 5% battery is to prevent the board from turning OFF suddenly when the battery is very low on voltage. This protects both the rider and battery.

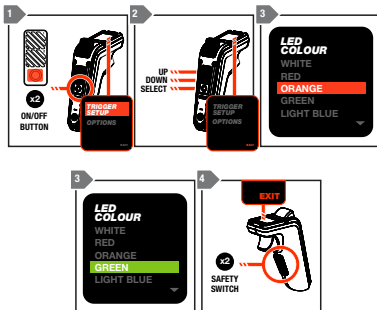
TIP - As you ride your Evolve Skateboard and use your remote, the skateboard battery meter and remote battery meter will slowly deplete. If you ride up hills, accelerate heavily and ride over grass you should expect the battery to deplete faster than if you were riding on flat, smooth surfaces. For the longest ride times, ride holding a set speed and avoid start/stop riding. See the Evolve YouTube channel for more tips.

LED SETTINGS

The Carbon and Bamboo Hadean boards both have built in LED lights that can be colour customised and synced to the brake trigger to show a red light when applying the brake.

To customise the LED colours:

1. Double-tap the **ON/OFF** button to access the menu.
2. Scroll by pressing the Mode buttons to 'Options', then press the **ON/OFF** button to confirm selection.
3. Scroll by pressing the Mode buttons to 'LED Settings', then press the **ON/OFF** button to confirm selection.
4. Scroll through the LED options to select your preference, then press the **ON/OFF** button to confirm selection.
5. Double tap the **SAFETY SWITCH** to go back to the previous menu screen or scroll to the 'EXIT' selection and press the **ON/OFF** button to return to the default ride screen.

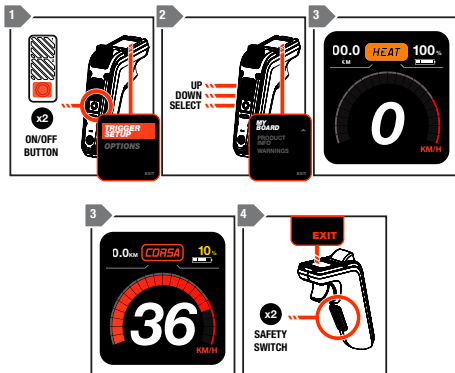




MY BOARD

Here is where you will find specific information and data regarding your skateboard such as board temperatures, battery cell readings, total ride hours, warnings and firmware details:

1. Double-tap the **ON/OFF** button to access the menu.
2. Scroll by pressing the Mode buttons 'My Board', and then press the **ON/OFF** button to confirm your selection.
3. Scroll by using the Mode buttons and press the **ON/OFF** button for the selection you wish to view.
4. Double tap the **SAFETY SWITCH** to go back to the previous menu screen or scroll to the 'EXIT' selection and press the **ON/OFF** button to return to the default ride screen.



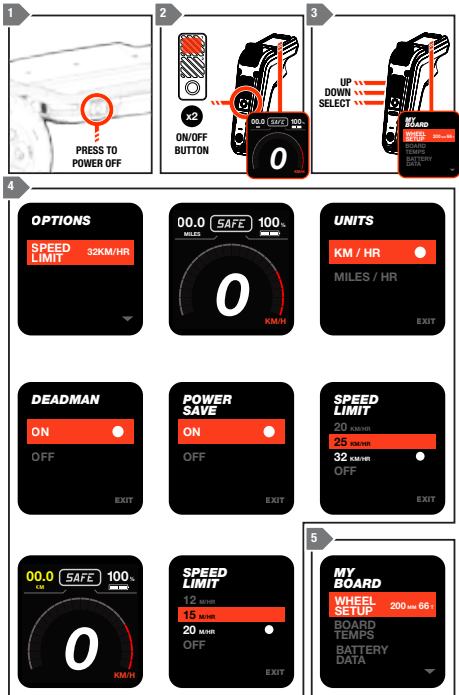


TRIGGER CALIBRATION

If you experience symptoms such as difficulty changing speed Modes, you are unable to turn the remote off before the board or you can brake but not accelerate, this is usually caused by movement of the trigger magnets from their original positions within the remote case.

In most cases, the Phaze remote will detect this automatically and prompt you to perform a trigger calibration.

1. Ensure the skateboard is turned off. Press the **ON/OFF BUTTON** on the remote.
2. From the default screen 'Pair Remote' screen, double click the **ON/OFF BUTTON** to access the menu.
3. Scroll by pressing the **MODE BUTTONS** to 'Trigger Setup' and press the **ON/OFF BUTTON** to confirm selection.
4. Follow to on screen prompts to calibrate the triggers.
5. The remote will now be in the default ride screen.



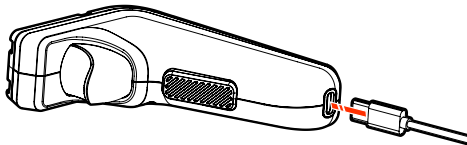


CHARGING THE REMOTE



ALWAYS charge your Phaze remote **BEFORE** your first ride. The remote may not come fully charged.

To charge, insert the USB C plug of the charge cable carefully into the charge port of the remote, and the USB plug end into a suitable USB port.



The remote will show:

- GREEN LIGHT = FULLY CHARGED**
- RED LIGHT = CHARGING**

Once the remote is fully charged remove the USB C plug from the remote.



TROUBLESHOOTING

This manual is not intended as a comprehensive use, service, repair or maintenance manual. For detailed information regarding tips, maintenance and troubleshooting, please visit **EVOLVESKATEBOARDS.COM**. Here you will find links to your local distributor for detailed information.

Please contact your local distributor for ALL maintenance and troubleshooting questions. You may also find many video tutorials on your distributor's website.



ERROR CODES

If your board detects an operational issue, an error message will be displayed in the 'Warnings' section of the 'My Board' screen and a Yellow Spanner will show on the default ride screen.

BATTERY FAULT

This error code may be displayed if there is an error in communication between the BMS and motor controller and/or if a battery cell is failing. In the event this occurs, the board will limit the Speed Mode to **SAFE** Mode to reduce the risk of damage to the battery.



WARNING BATTERY FAULT



PLEASE CONTACT YOUR
LOCAL SUPPORT AGENT
FOR ASSISTANCE

MOTOR FAULT

This error code may be displayed if an error has been detected from one, or both, of the motors in operation.



WARNING MOTOR FAULT



PLEASE CONTACT YOUR
LOCAL SUPPORT AGENT
FOR ASSISTANCE



PROTECTION WARNINGS



If your board ever experiences operational issues, please contact your local Evolve Skateboards support team for assistance.

If ever the board is overworked, it is possible a safety protection could be activated. If this occurs, a warning message will be displayed on the remote.

To protect your Evolve Skateboard from overheating, the software is designed to reduce the board performance should it detect elevated temperatures. This forces the board to cool down and prevents the rider continuing to put stress on the electrics.



If ever the skateboard does become too hot during use, the skateboard will reduce power and performance and the remote will automatically display the 'HEAT' icon at the top of the LCD screen. The remote will vibrate and you will feel a reduction in power. If this occurs its best to let the board cool down by either resting or riding economically until the board cools down to a lower temperature.

WARNING MOTOR PROTECTION



PLEASE TURN THE BOARD & REMOTE OFF, WAIT 10 SECONDS, THEN TURN THE BOARD BACK ON FOR NORMAL OPERATION

MOTOR PROTECTION

This can occur if the skateboard has had excessive workloads that may trigger a safety protection. The power to your skateboard will be reduced and a message on the remote will instruct you to reset the system by turning it off and back on again.

WARNING BATTERY PROTECTION



BATTERY PROTECTION WAS ACTIVATED DUE TO CURRENT OVERLOAD. IF PROBLEM PERSISTS, CONTACT YOUR LOCAL SUPPORT AGENT FOR ASSISTANCE.

BATTERY PROTECTION

This can occur if the battery has had excessive workloads that may trigger a safety protection. The power to your skateboard will be reduced and a message on the remote instructing to reset the system by turning it off and back on again.

WARRANTY

THIS REMOTE IS COVERED BY A 12 MONTH MANUFACTURERS WARRANTY (TIME PERIOD MAY BE DIFFERENT IN OTHER COUNTRIES. PLEASE CONSULT THE WEBSITE OR SELLER YOU PURCHASED FROM) THAT COVERS DEFECTS IN WORKMANSHIP AND MATERIAL. THIS DOES NOT COVER MISUSE, PERISHABLE ITEMS (SUCH AS WHEELS, TYRES, TUBES, BEARINGS, BELTS), NEGLIGENCE, ABUSE, ACCIDENT OR RIDING IN WATER AND SHIPPING DAMAGE.

FOR WARRANTY CLAIMS AND DETAILS, PLEASE VISIT YOUR LOCAL DISTRIBUTOR WEBSITE FOR INSTRUCTIONS. PLEASE KEEP YOUR SHIPPING BOX IN CASE THE BOARD EVER NEEDS TO BE RETURNED.

evolve