

# HOW TO PUT THIS SH\*T TOGETHER

TUSHY FRESH



**TUSHY**

hellotushy.com

## TABLE OF CONTENTS

MEET THIS MANUAL .....	1-2
MEET YOUR TUSHY .....	3-5
BEFORE YOU START .....	6-10
GET THIS POTTY STARTED .....	11-13
CONNECTING YOUR TUSHY .....	14-23
KNOW BEFORE YOU GO .....	24
HOW TO USE YOUR TUSHY .....	25
FREQUENTLY ASSED QUESTIONS .....	26
TROUBLESHOOTING .....	27-28
WARRANTY .....	29
MEET THE TUSHY POO-RUS .....	30

# MEET THIS MANUAL

## GET INTO THE GROOVE



Let's get this POTTY STARTED! Turn on some rump-shakin' TUSHY Tunes. We've assembled the perfect tracks to get you in the mood to upgrade your toilet, your booty, and your life.

[HELLOTUSHY.COM/TUNES](https://www.hellotushy.com/tunes)

## GET COMFY



Lay down a towel or the TUSHY box for some extra padding for your knees.

## USE THE QR READER



Next to every step of this installation, you'll find a QR code with a handy visual of that step.



Hold your smartphone camera over the QR code so that it's clearly visible on your screen.

## CONTACT US

Have a question?

Our Customer Experience Poo-Rus are ready to help.

Email [INSTALL@HELLOTUSHY.COM](mailto:INSTALL@HELLOTUSHY.COM), chat with us on [hellotushy.com](https://hellotushy.com), or text MYTUSHY to 794-54 (US only) or 1 (833) 273-1370 (Canada only).

\*By signing up via text, you agree to receive recurring automated promotional, personalized marketing text messages (e.g. cart reminders), and bumperful puns from TUSHY at the cell number used when signing up. Consent is not a condition of any purchase. Reply HELP for help and STOP to cancel. Msg frequency varies. Msg & data rates may apply. View Terms (<https://attnl.tv/t/9M9>) & Privacy (<https://attnl.tv/p/9M9>).

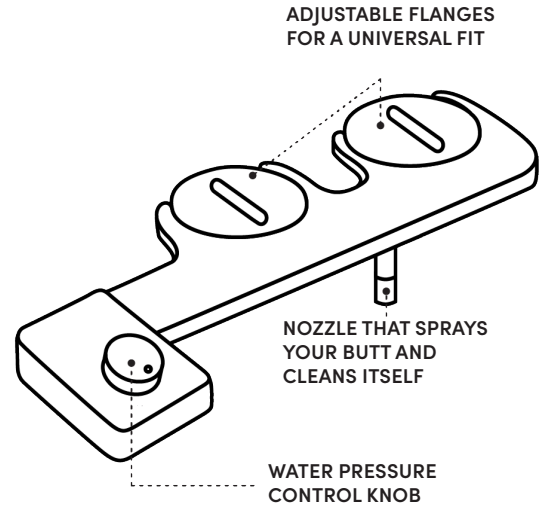
## IMPORTANT STUFF

*Read all instructions before installing or using the TUSHY. Failure to do so could result in property damage. Always turn off the water supply valves before installing or performing maintenance on your TUSHY. When tightening connections, make sure they are tight, but be careful not to over-tighten as this could result in leaks or property damage. Make sure you check for leaks after installing your TUSHY and periodically thereafter. When using your TUSHY, turn the pressure knob slowly. Increasing the pressure too fast may lead to discomfort or injury. If you're not sure about something, please consult a plumber or send us an email at [INSTALL@HELLOTUSHY.COM](mailto:INSTALL@HELLOTUSHY.COM).*

# MEET YOUR TUSHY



# YOUR TUSHY



## INCLUDED PARTS



Mega Adapter  
(7/8" x 3/8" x 7/8" Compression)



Flexible Hose  
(2 Feet, 3/8" to 3/8" Compression)

### TUSHY TIP:

Keep all of these parts (and this manual) just in case you need them in the future!

## YOU MIGHT ALSO NEED



Flathead  
Screwdriver



Phillips Head  
Screwdriver



Towels

# BEFORE YOU START

## CHECK YOUR TOILET

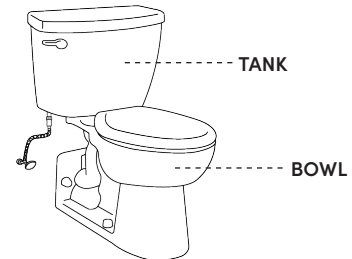
(THERE ARE DIFFERENT KINDS OF TOILETS? WHO KNEW?)

To check out these toilets  
online, scan here:



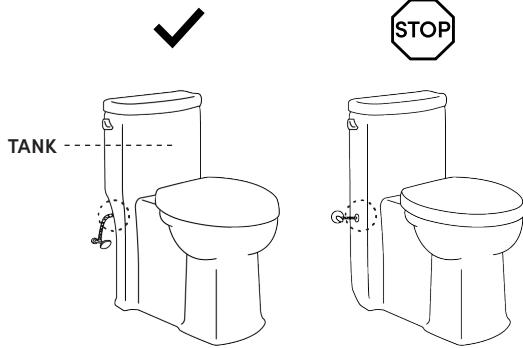
## THE STANDARD

MOST POPULAR



The Standard "two-piece" toilet is the most common toilet you'll find in a majority of residential homes. It comes in two pieces, consisting of the bowl and the tank, and has a flexible hose connection between the water supply and tank. Most importantly, all of the water supply connections are visible. If you've got The Standard, then this install will be easy breezy. You're good to go!

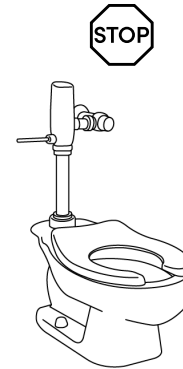
## THE SKIRTED TOILET



Skirted toilets are a more modern, clean design that may hide the external tank connection. If you are able to access the tank connection, awesome! You shouldn't have too much trouble.

If you aren't able to access the tank connection, check out [HELLOTUSHY.COM/SKIRTEDTOILET](https://www.hellotushy.com/skirtedtoilet) for tips on how to connect these toilets. We'll get you set up in no time.

## THE FLUSHOMETER

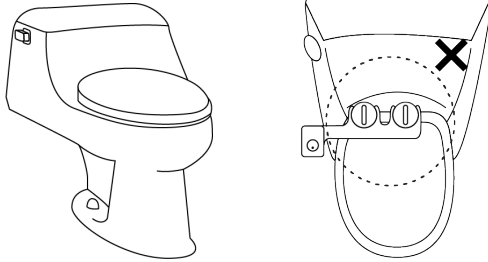


The flushometer toilet is the kind that you normally find in commercial buildings, but some residential apartment buildings have these toilets (looking at you, NYC friends). They have a lever with a powerful flush and no easy access to a water supply connection. At first glance, these toilets don't look TUSHY compatible, BUTT ... we have a hack for that. ;)

You can connect your TUSHY to your sink's water supply. Make sure your sink is within 15 feet of your toilet. If you want to start a flushometer installation, visit our flushometer page [hellotushy.com/flushometer](https://www.hellotushy.com/flushometer) for an instruction video and parts you will need.

If you have any questions or concerns at all, consult a plumber, email [INSTALL@HELLOTUSHY.COM](mailto:INSTALL@HELLOTUSHY.COM), or text us at MYTUSHY to 794-54 (US only) or 1 (833) 273-1370 (Canada only), and we will be able to ASSist you.

## THE FRENCH CURVE



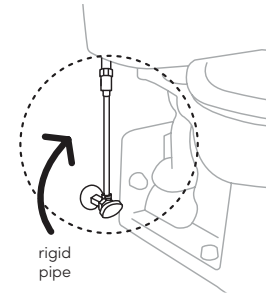
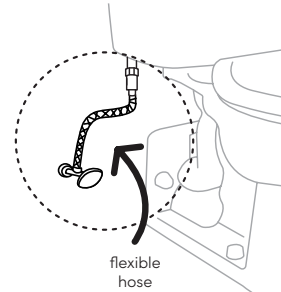
Do you oui oui in this type of potty? French curve toilets are one-piece toilets curved in the back. Though they are very high-end, French curve toilets tend to be very hard to fit when it comes to any bidet seats or attachments. The sexy curves of the toilet don't allow the TUSHY to sit flat.

If you have any questions or concerns at all, consult a plumber, email [INSTALL@HELLOTUSHY.COM](mailto:INSTALL@HELLOTUSHY.COM), or text us at MYTUSHY to 794-54 (US only) or 1 (833) 273-1370 (Canada only), and we will be able to ASSist you.

## CHECK YOUR CONNECTION

### WHAT KIND OF WATER CONNECTION DOES YOUR TOILET HAVE?

If you have a flexible hose (left), you're good to go! Do you have a rigid metal or plastic pipe instead (right)? No problem. Visit [HELLOTUSHY.COM/FLEXHOSE](https://www.hellotushy.com/flexhose) or your local hardware store to get a flexible hose. You'll want a flexible hose that's 3/8" x 7/8".



If you have any questions or concerns at all, consult a plumber, email [INSTALL@HELLOTUSHY.COM](mailto:INSTALL@HELLOTUSHY.COM), or text us at MYTUSHY to 794-54 (US only) or 1 (833) 273-1370 (Canada only), and we will be able to ASSist you.

# GETTING THIS POTTY STARTED

## 1. TURN OFF WATER SUPPLY VALVE



Turn off the water valve beside the toilet by turning it clockwise.

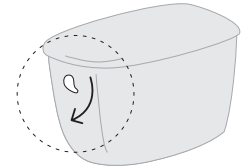
### TUSHY TIP:

If the valve is tight, there may be some mineral build up (white calcification). Slow and steady wins the race. If it's stuck, try twisting it in one direction and then the other, each time rotating a little further until it's free to turn all the way around.

## 2. EMPTY THE TOILET TANK

Flush your toilet to drain the tank. Hold down that flusher until the tank empties nearly completely!

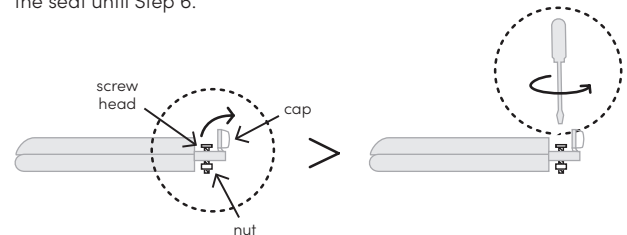
An inch of water at the bottom of the tank is okay, though.



## 3. REMOVE THE TOILET SEAT



For most toilet seats, flip up the screw caps behind the seat with a flathead screwdriver to access the screws. Turn counterclockwise to loosen the screws. Remove the seat and set aside. You won't need the seat until Step 6.



### TUSHY TIP:

You may need to hold the nut on the underside of the screw with your other hand (using pliers or a towel) while unscrewing.

# CONNECTING YOUR TUSHY

## Dealing with a unique quick-release or mounted toilet seat?

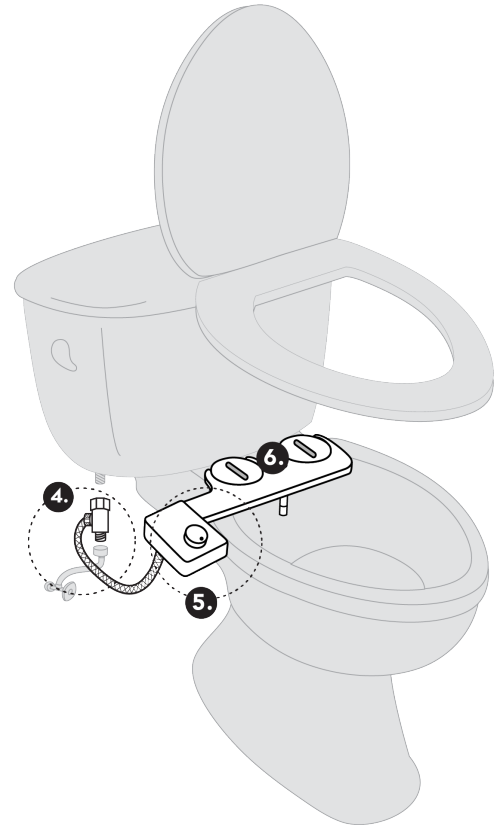
There's a super easy fix. The quick-release mounts should be able to unscrew from the toilet. Just remove them and set them aside for now.

Check out [HELLOTUSHY.COM/MOUNTEDSEATS](https://www.hellotushy.com/mountedseats) for some video tips if you're having trouble.

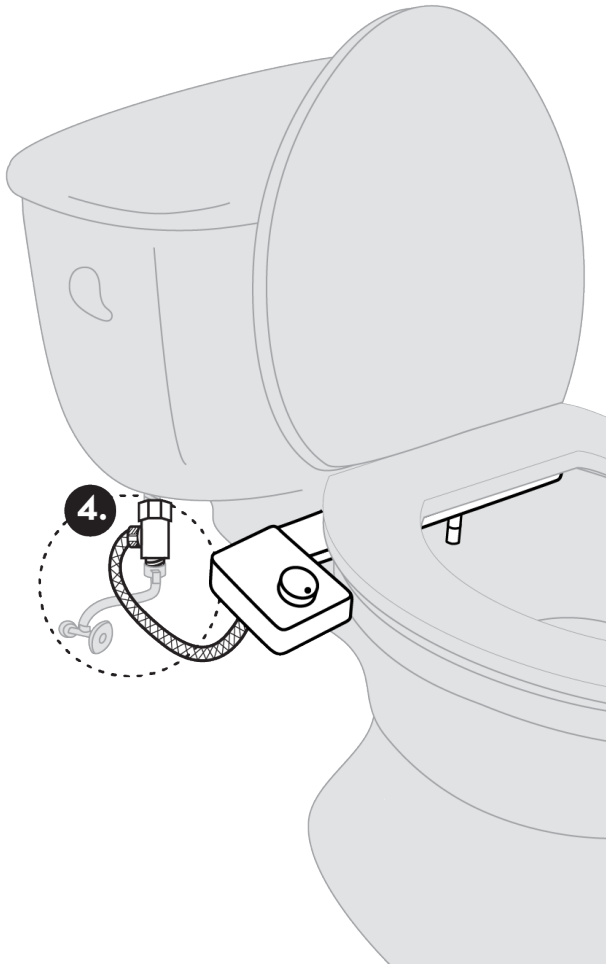


## TUSHY TIP:

If your toilet is dirty (hey, it happens!), it's the perfect time to clean it.







## 4. CONNECT TO COOL WATER

---

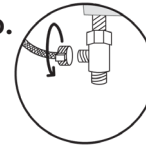


4a.



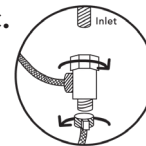
Disconnect the existing flexible hose from your toilet tank by turning it clockwise, if you're looking at the connection from above. Be prepared to catch or wipe up some residual water that might spill onto the floor.

4b.

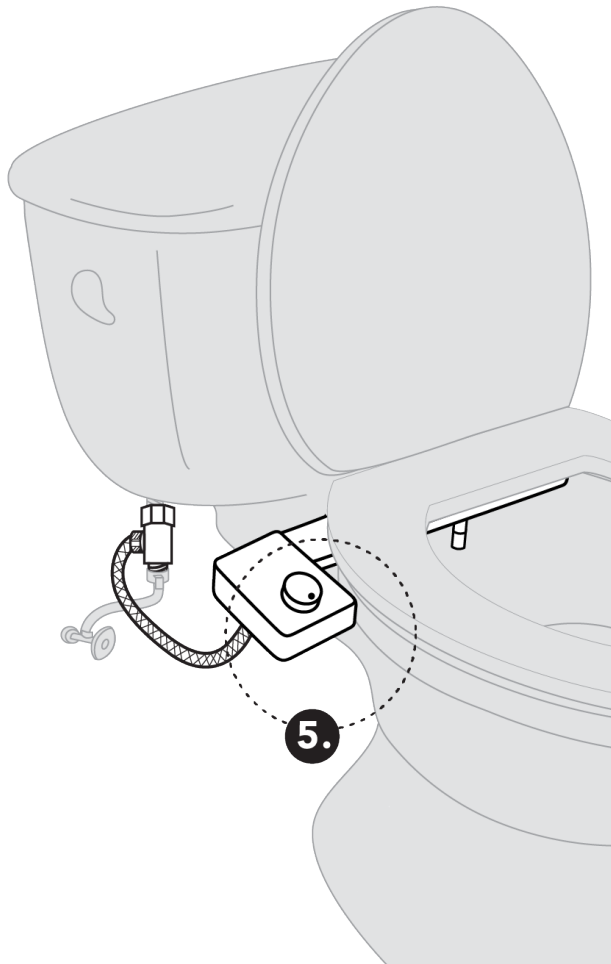


Screw the provided flexible hose to the mega adapter's side connection. Use a wrench to tighten it if necessary, but remember: don't overtighten!

4c.

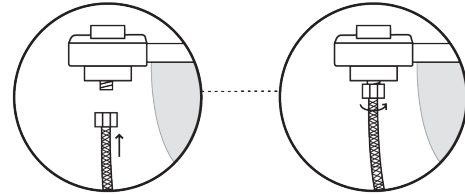


Screw the existing flexible hose to the bottom of the mega adapter and then screw the top of the mega adapter counterclockwise (if you're looking at the connection from above) onto the tank. Be careful not to overtighten!



## 5. FINISH THE WATER CONNECTION

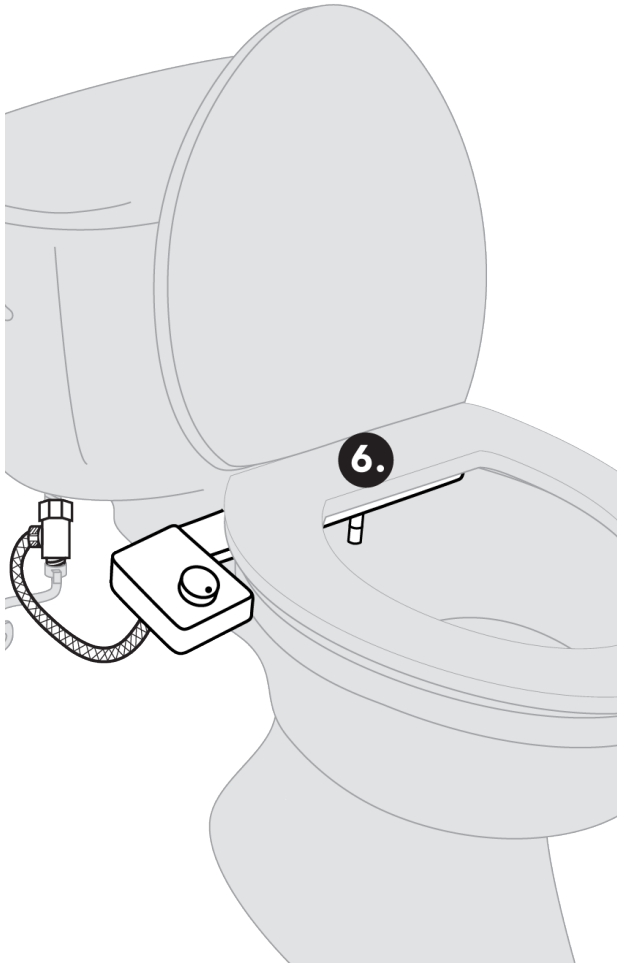
---



Affix the flexible hose from the mega adapter to the water port on the underside of the TUSHY console by turning counterclockwise if you're looking at the connection from above. Clockwise if you're looking up at this connection from the floor.

### **TUSHY TIP:**

Make sure the threads of the water inlet port are lined up with the threads of the water hose. If the hose only turns once before stopping, it may be cross-threading and not sealed properly. Don't force it! Unscrew the hose and reattach until the threads line up properly.

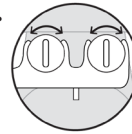


## 6. ATTACH YOUR TUSHY TO THE BOWL

---

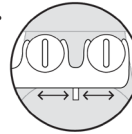


6a.

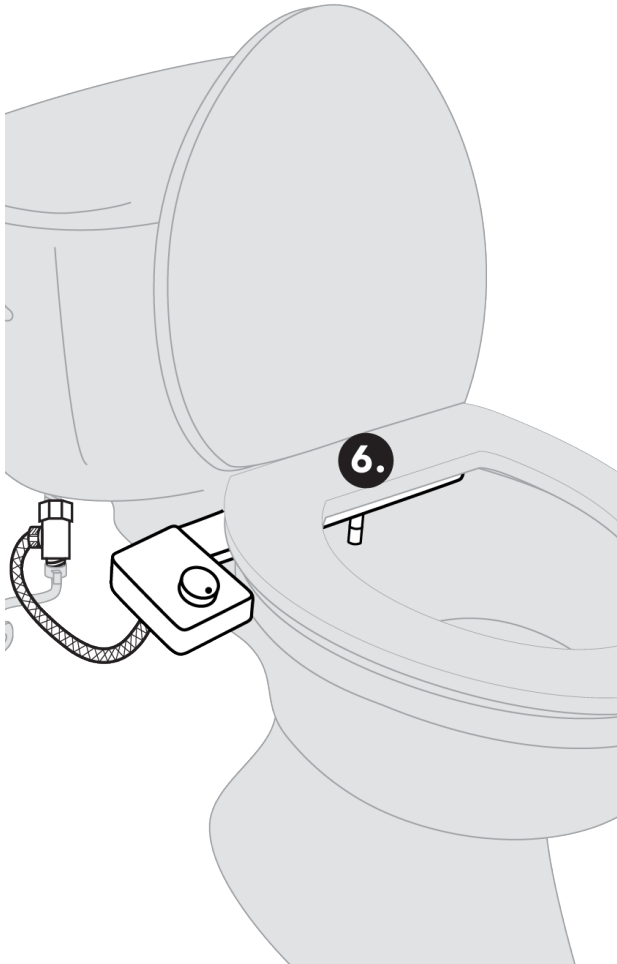


Now for the big moment ... place the TUSHY on top of your toilet and line up the adjustable flanges with the holes in between the bowl and the tank used for mounting the toilet seat.

6b.



Make sure the nozzle is lined up in the center of the bowl and as close to the back rim of the bowl without the nozzle touching it.



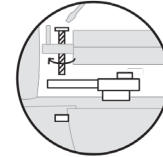
## 6. ATTACH YOUR TUSHY TO THE BOWL

---



(CON'T.)

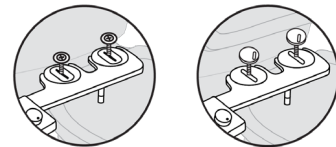
6c.



Reattach the toilet seat on top of the TUSHY by threading the toilet seat bolts through the adjustable flanges and through the toilet's mounting holes. Fasten the bolts by turning them clockwise.

**TUSHY TIP:**

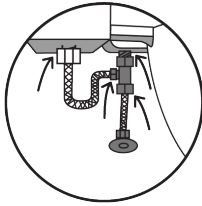
Hold the underside of the toilet nuts to tighten the bolt from the top more effectively.



If you have a quick-release toilet seat, place those mounts you set aside on top of the TUSHY adjustable flanges and tighten through the toilet's mounting holes.

# 7.

## CHECK FOR LEAKS



This is a super important step so that we can avoid any leaks. Nobody wants that.

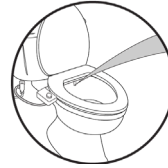
Turn the water valve on and off one time to check the water connections for any leaks. If you are experiencing leaks, first make sure the black rubber gasket is placed correctly inside of the mega adapter. Second, make sure the threads are aligned properly. Third, make sure the hoses and adapters are tightened completely, but remember not to overtighten!

Also, be sure to touch each hose to make sure water isn't running down them. Once there are no leaks, make sure your water valve is open, leave a towel or a bowl below the connections and check back on it in an hour to make sure there are no slow leaks that may not be instantly visible. If there is any water present after an hour, repeat the steps above. If not, you are good to go!

If you have any questions or concerns at all, consult a plumber, email [INSTALL@HELLOTUSHY.COM](mailto:INSTALL@HELLOTUSHY.COM), or text us at MYTUSHY to 794-54 (US only) or 1 (833) 273-1370 (Canada only), and we will be able to ASSist you.

**YOUR BOOTY IS NOW READY  
FOR THE SPRAY OF A LIFETIME.**

# KNOW BEFORE YOU GO



### DON'T SPRAY UNTIL YOU SIT DOWN

We know you'll be tempted, but unless you want a spray to the face or a soaked bathroom, don't spray until your butt is on that seat.



### TURN THE PRESSURE KNOB VERY SLOWLY

Adjust the pressure very slowly so that the jet isn't too strong, which may cause discomfort or injury. Ease into it and find the most comfortable pressure for you.



### NOZZLE WASH

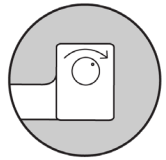
If you get a little schmutz on the nozzle, don't freak! The self-cleaning nozzle rinses itself off every time you use your TUSHY.

# HOW TO USE YOUR TUSHY



## DO YOUR DOO

Don't be shy, everybody poops.



## TURN THE KNOB

Adjust the pressure from gentle butt spritz to power wash.



## FIND THE PERFECT ANGLE

Adjust your body by leaning forward or backward to find the right angle for a precise clean.

If you have any questions or concerns at all, consult a plumber, email [INSTALL@HELLOTUSHY.COM](mailto:INSTALL@HELLOTUSHY.COM), or text us at MYTUSHY to 794-54 (US only) or 1 (833) 273-1370 (Canada only), and we will be able to ASSist you.

# FREQUENTLY ASSED QUESTIONS

## OK, BUT(T) HOW DO I DRY OFF?

If your booty is too busy to air dry, you can pat dry with our reusable, ultra-comfy TUSHY Bum Towels or our super sustainable, 4-ply Bamboo Toilet Paper designed to be extra absorbent. Using TUSHY dramatically reduces the amount of TP needed by 80%. Endless, irritating wiping turns

## WHAT WILL MY FRIENDS THINK WHEN THEY SEE MY BUM TOWEL IN THE BATHROOM?

That you're a freakin' genius who not only cares for the planet, but also knows how to save money! If you lived in Europe, you'd have monogrammed bum towels for the whole family, so school your house guests about the ills of TP and show them the bidet side of life.

## I NEED AN EXTRA DOODAD TO INSTALL MY TUSHY—WHAT DO I DOO?

Just like butts, there is a wide variety of toilets and toilet seats. In an effort to support our sustainability goals, we send you the standard parts in your TUSHY install kit that we anticipate you'll need. However, if you have any installation trouble, please reach out to us directly as we have free and easy solutions for almost any issue you come across. Please contact us at [INSTALL@HELLOTUSHY.COM](mailto:INSTALL@HELLOTUSHY.COM) and we'll take care of you!

# TROUBLESHOOTING

	PROBLEM	POSSIBLE CAUSES	POSSIBLE SOLUTIONS
1	My roommates, friends, loved ones won't stop using my TUSHY.	TUSHY's awesomeness.	Buy them TUSHYs for their birthdays.
2	There is leaking from the TUSHY body or hose connections.	<ol style="list-style-type: none"> <li>1. The black rubber gasket(s) are not properly installed on the hose or adapters.</li> <li>2. The mega adapter threads were cross-threaded or stripped during installation.</li> <li>3. The TUSHY or hose may need to be replaced (very rare).</li> </ol>	<ol style="list-style-type: none"> <li>1. Make sure that the black gasket(s) are properly installed on both ends of the console hose and the mega adapter.</li> <li>2. Contact us to request a replacement adapter.</li> <li>3. Contact us to request a replacement part or TUSHY.</li> </ol>
3	The toilet seat bolts are too short to properly affix to the toilet after installing the TUSHY.	Some toilet seats bolts are shorter than required to accommodate the TUSHY.	Install longer toilet seat bolts that will accommodate the extra 1/8" that the TUSHY adds to your seat setup. Please don't hesitate to contact us for potential solutions. We may be able to send you a replacement seat bolt or direct you to a replacement. Super easy fix!
4	The toilet seat bolts do not fit through the holes in the adjustable flanges.	Some toilet seats bolts are thicker than the required 1/8" to accommodate the TUSHY.	Purchase thinner toilet seat bolts. Standard toilet seat bolts will fit through the holes in the adjustable flanges.

# TROUBLESHOOTING

	PROBLEM	POSSIBLE CAUSES	POSSIBLE SOLUTIONS
5	There's no access to water next to my toilet.	<ol style="list-style-type: none"> <li>1. You have a flush-o-meter or commercial toilet.</li> <li>2. You have a wall-mounted toilet or a unique plumbing situation that doesn't allow you to connect at the water valve at the wall.</li> </ol>	<ol style="list-style-type: none"> <li>1. If you know the flushometer kit will work for you, you can purchase it on our Spare Parts page at <a href="https://www.hellotushy.com">HELLOTUSHY.COM</a>.</li> <li>2. If you have a unique plumbing situation that you aren't sure about please reach out to our team so we can assist you!</li> </ol>
6	The spray isn't hitting my butt.	<ol style="list-style-type: none"> <li>1. Your butt isn't in the right place</li> <li>2. Your TUSHY isn't in the right place.</li> </ol>	<ol style="list-style-type: none"> <li>1. Adjust your seating position and lean forward or backward as needed to hit the right spot.</li> <li>2. Loosen your toilet seat screws, readjust your TUSHY placement as needed, then retighten the toilet seat screws.</li> </ol>

If you have any questions or concerns at all, consult a plumber, email [INSTALL@HELLOTUSHY.COM](mailto:INSTALL@HELLOTUSHY.COM), or text us at MYTUSHY to 794-54 (US only) or 1 (833) 273-1370 (Canada only), and we will be able to ASSist you.

# ONE YEAR LIMITED WARRANTY

1. TUSHY warrants this product to be free from defects in materials and workmanship under conditions of normal use for a period of one (1) year from the date of purchase. This warranty is extended only to the original purchaser and is not transferable if the original purchaser sells or otherwise transfers the product. TUSHY may require proof of purchase to determine whether a claim falls within the warranty period.

2. To report any product issues and to open a claim under the warranty, contact TUSHY at [warranty@hellotushy.com](mailto:warranty@hellotushy.com). TUSHY will reach out to you to attempt to help resolve the issue.

3. If a defect covered by this warranty arises, TUSHY's obligations under this warranty are limited to repair or replacement, at TUSHY's option, provided that such products were used in accordance with the instructions. Replacement may be of the same or similar product at TUSHY's discretion and based on availability. TUSHY reserves the right to inspect the product to confirm that the issue is covered by this warranty.

4. TUSHY is not responsible for the cost of return shipping of the product.

5. This warranty does NOT apply to:

- Damage or loss that occurs during shipment.
- Damage, loss or injury resulting from negligent or improper use or the user's failure to follow instructions.
- Damage or loss resulting from modification of the product.
- Damage or loss resulting from normal "wear and tear" of the product.
- Damage based on claims of personal injury or property damage, including, but not limited to, claimed damages that are incidental or consequential in nature.

6. This written warranty is the only warranty made by tushy. Repair or replacement as provided under this warranty shall be the exclusive remedy available to the purchaser. Tushy shall not be responsible for loss of use of the product or for other incidental, special, or consequential damages or expenses incurred by the purchaser or a third party, or for any other expense not specifically stated above. Except to the extent prohibited by applicable law, any implied warranties, including those of merchantability and fitness for a particular purpose, are expressly limited to the duration of this warranty. Some states do not allow limitations, so the above limitation and exclusion may not apply to you.

7. This warranty gives you specific legal rights, and you may also have other rights which vary from state to state.

# MEET THE TUSHY POO-RUS

## GENERAL

Say hi! Comments! Compliments! Butt puns!

[HELLO@HELLOTUSHY.COM](mailto:HELLO@HELLOTUSHY.COM)

## TUSHY QUESTIONS

Got general Qs? i.e. Shipping options, product availability

[QUESTIONS@HELLOTUSHY.COM](mailto:QUESTIONS@HELLOTUSHY.COM)

## ORDER INQUIRIES

Track, modify, cancel, or change your order or address

[MYORDER@HELLOTUSHY.COM](mailto:MYORDER@HELLOTUSHY.COM)

## INSTALLATION SUPPORT

Need a hook up with the hook up? Install help, spare parts and troubleshooting

[INSTALL@HELLOTUSHY.COM](mailto:INSTALL@HELLOTUSHY.COM)

## MANAGE SUBSCRIPTIONS

Change address, change frequency, or cancel

[SUBSCRIPTIONS@HELLOTUSHY.COM](mailto:SUBSCRIPTIONS@HELLOTUSHY.COM)

## RETURNS

Send it back?! Okay, I guess.

[TUSHY.LOOPRETURNS.COM](mailto:TUSHY.LOOPRETURNS.COM)

## FRESH

If you have any questions or concerns at all, consult a plumber, email [INSTALL@HELLOTUSHY.COM](mailto:INSTALL@HELLOTUSHY.COM), or text us at MYTUSHY to 794-54 (US only) or 1 (833) 273-1370 (Canada only), and we will be able to ASSist you.



# CONGRATULATIONS

Welcome to the first bidet of the rest of your life! Your hole life is about to change, but first, let's hook this sh\*t up! This cheeky instruction booklet will walk you through, step by step, fart to fart with your installation. You'll be pooping in luxury in no time.

# ONLINE VIDEO RESOURCES

(For our visual learners)

INSTALL VIDEO:

[HELLOTUSHY.COM/FRESHINSTALL](https://hellotushy.com/freshinstall)

TIPS & HACKS:

[HELLOTUSHY.COM/TIPS](https://hellotushy.com/tips)

YAY!  
YOU PUT  
THIS SH\*T  
TOGETHER



**TUSHY**

hellotushy.com